

**Ref No. MKCIL/ASSAM/PKG-07/309**

**Date: 05.08.2025**

**To,**

**The Team Leader.**

M/s Technocrats Advisory Services Private Limited

In Association with MAV Associates LLP.

House No. NH-37, Maizdihi, Ward No.-2

(Near-Maa Kali Automobile) P.O. Settlement Road,

PS & Dist. Sribhumi, Assam, Pin-788712

Email : [iekarimganj@gmail.com](mailto:iekarimganj@gmail.com)

**Subject:** “Four Laning of NH-37 from Design Ch 0+000 on NH 8 near Karimganj to Design Ch. 14+250 near Sutarkandi (Spur connectivity to Indo/Bangladesh Border) Silchar-Churaibari Pkg-7 in the state of Assam” – “**Submission of Monthly Progress Report for the month of July-2025.**”

**Ref.:**

1. LOA- NHIDCL/Assam/NH-37/Sil-Churai/Pkg-VII/233357/3087 dated 11.03.2024

2. Concession Agreement on dated 17th September 2024.

**Dear Sir,**

With reference to above cited subject, we are herewith submitting the Monthly Progress Report for the month of July, 2025 as per Clause 13.1 of Article 13 of Concession Agreement for your kind review and concurrence please.

Assuring you of our best services at all times.

**Thanking you,**

**Your sincerely,**



**Project Manager**

**MKC Badarpur Churaibari Kamakhya (PKG-7) Highways Private Limited.**

**Encl.:** As above.

**Copy to:** General Manager, NHIDCL, PMU-Karimganj, 2nd Floor, Bipin Paul Road, Ward No.- 24, Opp. Basak House, Karimganj, Assam- 788711, Email id- [pmukarimganj@gmail.com](mailto:pmukarimganj@gmail.com)

4-L of NH 37 from design Ch 0+000 on NH-8 near Karimganj to design Chainage 14+250 near Sutarkandi (Spur Connectivity to Indo/Bangladesh Border) Silchar-Churaibari Pkg-7 in the State of Assam on HAM mode.

# Monthly Progress Report

## July - 2025



Authority		National Highways Infrastructure Development Corporation Limited
Independent Engineer		M/s Technocrafts Advisory Services Private Limited in association with M/s MAV Associates LLP
Concessionaire		MKC Badarpur Churaibari Kamakhya (PKG-7) Highways Pvt. Ltd.

**4-L of NH 37 from design Ch 0+000 on NH-8 near Karimganj to design Chainage 14+250 near Sutarkandi (Spur Connectivity to Indo/Bangladesh Border) Silchar-Churaibari Pkg-7 in the State of Assam on HAM mode.**

**TABLE OF CONTENTS**

<b>CHAPTERS</b>	<b>DESCRIPTIONS</b>	<b>PAGES</b>
	<b>TABLE OF CONTENTS</b>	
	Project Road Location Map / Index Map	
	<b>EXECUTIVE SUMMARY</b>	
	1. The Project Road	
	2. Mobilization	
	3. Pre-Construction Activity	
	4. EPC Contractor	
	5. Design & Drawing	
	6. Work Program	
	7. Quality Control & Material	
	8. Supervision and Monitoring of Project works	
	9. Site Visit and Meeting	
	10. Schedule Completion Date	
	11. Operation and Maintenance (O&M)	
	12. Area of Concern	
	13. Current Issues	
<b>1</b>	<b>INTRODUCTION</b>	
	General	
<b>2</b>	<b>CONTRACT DATA</b>	
<b>3</b>	<b>SALIENT FEATURES OF PROJECT HIGHWAY</b>	
	3.1 Pavement Composition (MCW)	
	3.2 Details of New/ Widening of Structures and Project Facilities	
<b>4</b>	<b>SCOPE OF WORKS AND PROJECT FACILITIES</b>	
	4.1 Scope of Works	
	4.2 Project Facilities	
<b>5</b>	<b>PRE-CONSTRUCTION ACTIVITY</b>	
	5.1 Obligations	
	5.2 Shifting of Utilities	
	5.3 Tree Cutting	
	5.4 Land Acquisition	

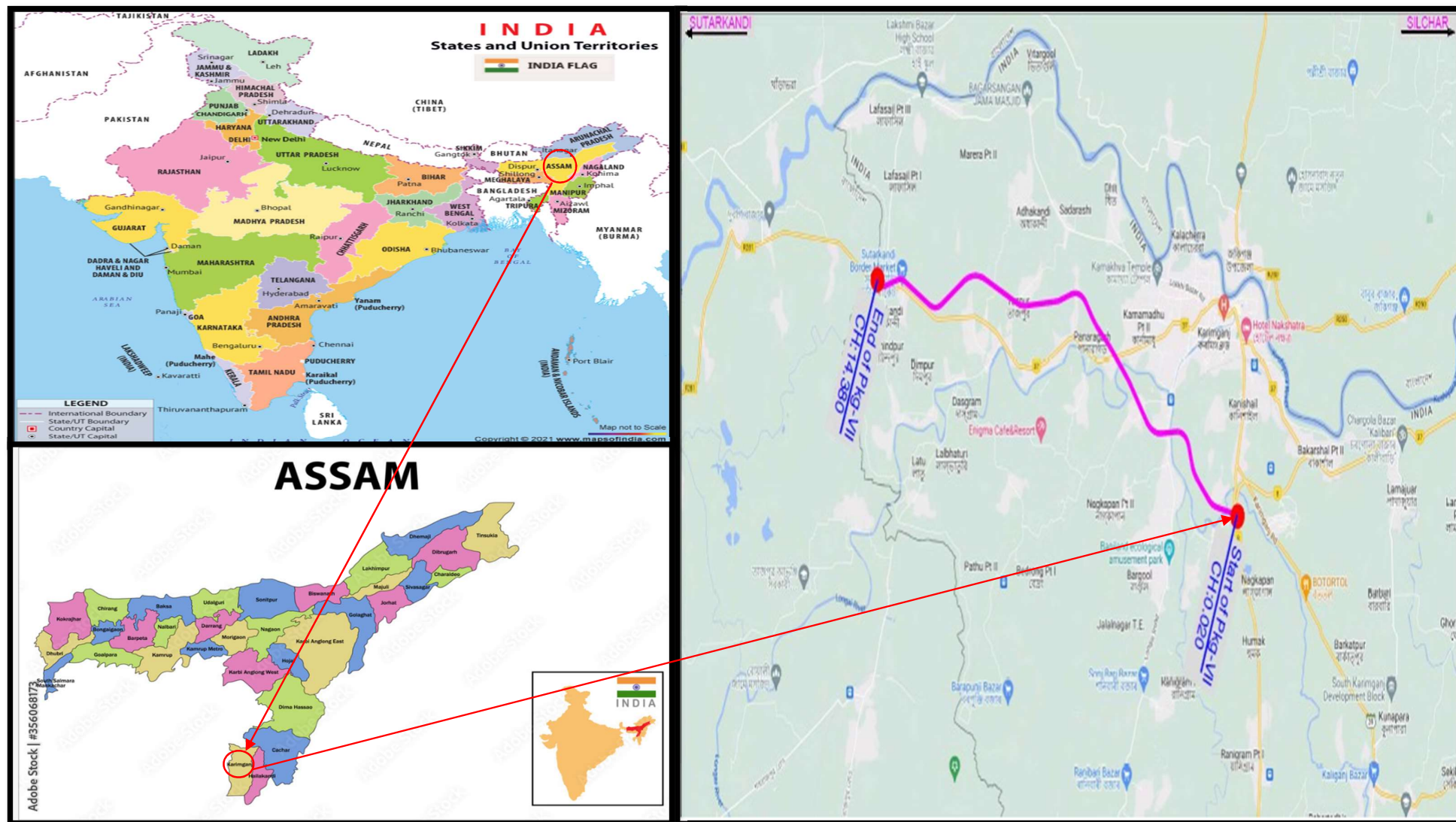
**4-L of NH 37 from design Ch 0+000 on NH-8 near Karimganj to design Chainage 14+250 near Sutarkandi (Spur Connectivity to Indo/Bangladesh Border) Silchar-Churaibari Pkg-7 in the State of Assam on HAM mode.**

	5.5 Hindrance, Payment Status and LA Status	
<b>6</b>	<b>MOBILIZATION</b>	
	6.1 Manpower Mobilization of Concessionaire	
	6.2 Organization Chart of Concessionaire	
<b>7</b>	<b>DEPLOYMENT OF PLANTS AND EQUIPMENT / PROJECT SET UP PLAN</b>	
	7.1 Plants and Equipment Deployed	
<b>8</b>	<b>DESIGN AND DRAWING</b>	
	8.1 Design	
	8.2 Drawing	
	8.3 Status of Drawings	
<b>9</b>	<b>PROJECT WORK PROGRESS</b>	
	9.1 Work Progress	
	9.2 Structure work Progress	
	9.3 Weightages of Components	
	9.4 S Curve of Project	
	9.5 Detailed Highway & Structure Works Progress	
<b>10</b>	<b>QUALITY CONTROL AND MATERIAL</b>	
	10.1 Quality Control	
	10.2 Site Laboratory	
	10.3 Material Testing	
	10.3.1 Soli and Aggregates	
	10.3.2 Cement	
	10.3.3 Reinforcement Steel	
	10.3.4 Status of Material Sources Approvals & Mix Designs	
	10.3.5 Details of QC Test conducted during the month	
<b>11</b>	<b>CORRESPONDENCE</b>	
<b>12</b>	<b>CURRENT ISSUE</b>	
<b>13</b>	<b>NON-CONFORMANCE REPORT</b>	
<b>14</b>	<b>WEATHER REPORT</b>	
<b>15</b>	<b>ACCIDENT REPORT</b>	
<b>16</b>	<b>ROAD MAINTENANCE AND SAFETY REPORT</b>	
<b>17</b>	<b>PROJECT PROGRESS PHOTOGRAPHS</b>	



4-L of NH 37 from design Ch 0+000 on NH-8 near Karimganj to design Chainage 14+250 near Sutarkandi (Spur Connectivity to Indo/Bangladesh Border) Silchar-Churaibari Pkg-7 in the State of Assam on HAM mode.

### PROJECT ROAD LOCATION MAP / INDEX MAP



**4-L of NH 37 from design Ch 0+000 on NH-8 near Karimganj to design Chainage 14+250 near Sutarkandi (Spur Connectivity to Indo/Bangladesh Border) Silchar-Churaibari Pkg-7 in the State of Assam on HAM mode.**

**EXECUTIVE SUMMARY**

The Concessionaire has signed the Concession Agreement with National Highway Infrastructure Development Corporation Limited (NHIDCL) on dated September 17, 2024. This Executive Summary presents the works progress of the Project Highway during the construction period from February 28, 2025 to February 27, 2027.

**1. The Project Road:**

4-L of NH 37 from design Ch 0+000 on NH-8 near Karimganj to design Chainage 14+250 near Sutarkandi (Spur Connectivity to Indo/Bangladesh Border) Silchar-Churaibari Pkg-7 in the State of Assam on HAM mode.

**2. Mobilization:**

The Concessionaire has mobilized the required Engineers/ Staff Personnel, Machineries/Equipment's, Plants and established main Base Camp at CH: - 5+600 LHS (Darakona).

The details of Key staff personnel deployed are highlighted in the Chapter-6 of this report. The details of deployed Plants and Machineries are included in Chapter-7 of this report.

**3. Pre-Construction Activity:**

The Details of pre-construction activities have been included in Chapter-5 of this report.

**4. EPC Contractor:**

MKC Infrastructure Limited

**4-L of NH 37 from design Ch 0+000 on NH-8 near Karimganj to design Chainage 14+250 near Sutarkandi (Spur Connectivity to Indo/Bangladesh Border) Silchar-Churaibari Pkg-7 in the State of Assam on HAM mode.**

The Details of project highway works have been included in Chapter-09 of this report.

**5.Design and Drawing**

The status of approval of Working Drawings for road works and structures submitted to Authority as on dated 31-07-2025 is given below.

Sr. No.	Description	UoM	Scope	Submitted	Approved	Balance	Remarks
1.	Plan & Profile (MCW)	Km.	14.360	14.360	0.00	14.360	
2.	Plan & Profile (SR)	Km.	4.16	0.00	0.00	4.16	
3.	RE Wall	SqM.	24984	0.00	0.00	24984.00	
4.	ROB	Nos.	1.00	0.00	0.00	1.00	
5.	Major Bridge	Nos.	3.00	1.00	0.00	3.00	
6.	Minor Bridge	Nos.	8.00	6.00	0.00	8.00	
7.	Underpasses	Nos.	16.00	12.00	12.00	04.00	
8.	Culvert	Nos.	72.00	25.00	25.00	47.00	

The details of design and drawing status have been included in this report on Chapter 8.

**7. Work Program:**

At the time of commencement of works, the Concessionaire submitted the Stage wise completion schedule Work Program Vide Letter No. MKCIL/ASSAM/PKG-07/162, dated 17.04.2025 for Authority/IE's approval. Based on the monthly works plan, the works is being carried out by the Concessionaire.

**8. Quality Control and Material:**

The works is being carried out by the Concessionaire as per Quality Assurance Plan submitted to Authority Vide Letter MKCIL/ASSAM/PKG-07/139 on dated 07.04.2025. Each construction activity is being checked/verified as per the RFI's submitted to Authority/IE by the Concessionaire.

**9. Supervision and Monitoring of Project works:**

The Authority/ IE along with the concessionaire is supervising and monitoring the execution of works as per requirements of Standard/ Specifications. The monitoring of works is being carried out through the RFI submitted by the Concessionaire and its approval/ rejection after necessary checking/ verification by the Authority/ IE.

**10. Site Visit and Meeting:**

The Authority/ IE Engineers are regularly visiting the Project Highway.

**11. Schedule Completion Date:**

**4-L of NH 37 from design Ch 0+000 on NH-8 near Karimganj to design Chainage 14+250 near Sutarkandi (Spur Connectivity to Indo/Bangladesh Border) Silchar-Churaibari Pkg-7 in the State of Assam on HAM mode.**

As per Schedule-G of the Concession Agreement shall occur on the 730th day from the Appointed Date. The declared Appointed Date being February 28, 2025, the Scheduled completion Date shall occur on February 27, 2027.

**12. Operation and Maintenance (O&M):**

**O&M Obligations** – During Operation Period, the Concessionaire shall operate and maintain the project in accordance with this Agreement either by itself, or through the O&M Contractor and if required, modify repair or otherwise make improvements to the Project to comply with the provisions of this Agreement, Applicable Laws and Applicable Permits, and conform to Specifications and Standards and Good industry Practice. The obligations of the concessionaire shall be as per Article 17.

**13. Area of Concern/ Availability of site for work:**

**Procurement of ROW-** The existing ROW and the stretches of 11.510 km. are subjected to following:

**a) Stretches/ Hindered Free Land 11.51 Km out of 14.36 Km:**

Stretches/ Hindered Free Land				Encumbrances/ Hindered Land		
Sr. No.	Side	Length (Km)	%	Side	Length (Km)	%
1.	BHS	11.510	80.20%	BHS	2.850	19.80%

**b) Hindered due to Tree Cutting:**

Description	Total Nos.	Impacted Length (km)	Remarks
Total Trees	407	7.0	

**c) Encumbrances due to Religious Structure:**

Sr. No.	Types	Chainage	Side	Remarks
1.	Small Temple	2+750	RHS	
2.	Temple	4+150	LHS	
3.	Kabristan	4+300	BHS	
4.	Masjid	4+500	BHS	
5.	Kabristan	7+300	BHS	

**d) Details of Hidered Land:**

Sr. No.	Issue Description	Side	Chainage		Length Affected (Km)	Remarks
			From	To		
1.	Brick industry	BHS	0+300	0+400	0.100	



**4-L of NH 37 from design Ch 0+000 on NH-8 near Karimganj to design Chainage 14+250 near Sutarkandi (Spur Connectivity to Indo/Bangladesh Border) Silchar-Churaibari Pkg-7 in the State of Assam on HAM mode.**

2.	Residential House	BHS	2+700	2+900	0.200	
3.	Assam Type House & Shade	BHS	2+900	3+000	0.100	
4.	Assam Type Residential House	BHS	3+800	4+200	0.400	
5.	RCC & Assam type House	BHS	4+200	4+500	0.300	
6.	Assam/ RCC Type Houses	LHS	5+500	5+600	0.100	
7.	Assam Type Residential House	RHS	5+600	5+650	0.050	
8.	Assam Type Residential House	LHS	6+600	6+650	0.050	
9.	Assam Type Residential House	RHS	7+200	7+300	0.100	
10.	Assam Type Residential House	BHS	9+300	9+370	0.070	
11.	Assam Type Residential House	RHS	9+370	9+400	0.030	
12.	Assam Type Residential House	BHS	11+250	11+400	0.150	
13.	Assam type/ RCC Residential Building	BHS	11+900	12+000	0.100	
14.	Assam type/ RCC Residential Building	RHS	12+200	12+700	0.500	
15.	Assam type/ RCC Residential Building	BHS	12+700	12+900	0.200	
16.	Assam type/ RCC Residential Building	BHS	13+200	13+600	0.400	
<b>Total Hindered Land</b>					<b>2.850</b>	

**Current Issues:-**

- a) Non-availability of land:- As per the Concession Agreement, 100% of the land is to be handed over to the Concessionaire within 90 days from the Appointed Date. However, only approximately 67.58% of the land is currently free from encumbrances.
- b) Schedule-G :-The approval of Schedule-G remains pending as of now on the end of IE/Authority.
- c) Supply of material:- The supply of materials is also being hampered due to disruption of road connectivity from Kalain to Badarpur (Gammon Bridge) and Kalain to Silchar.
- d) Water logging in PROW :- Due to heavy rainfall, water has accumulated along almost the entire length of the project within the ROW, which has hampered construction activities

## **CHAPTER-1**

### **INTRODUCTION**

#### **General**

The NHIDCL proposes to implement the development, maintenance, and management of the Spur from NH-8 near Karimganj to Sutarkandi (India-Bangladesh border) Km. 0.020 to Km. 14.380 into 4-lane access controlled corridor. The proposed project road has been selected to improve connectivity and reduce travel time from Assam to Tripura. Also, this connectivity will improve international road connectivity between India and Bangladesh. To achieve the above task, NHIDCL has appointed M/s. Aarvee Associates Architects Engineers and Consultants Pvt. Ltd. The Letter of Acceptance was communicated vide letter No. NHIDCL / Assam / DPR / SilcharChuraibari /222542/ 2581 and the agreement was signed on September 1<sup>st</sup>, 2023.

This executive summary is submitted along with the Final detailed project report to cover the key aspects of the project.

#### **Project Overview**

As described earlier the project road is a spur to NH-8 near Karimganj and ends at Sutarkandi. The proposed alignment passes through Karimganj district in the state of Assam connecting villages Karimganj, Fakirabazar, Jarpata and Sutarkandi.

**4-L of NH 37 from design Ch 0+000 on NH-8 near Karimganj to design Chainage 14+250 near Sutarkandi (Spur Connectivity to Indo/Bangladesh Border) Silchar-Churaibari Pkg-7 in the State of Assam on HAM mode.**

## **CHAPTER-2**

### **CONTRACT DATA**

<b>Sr. No.</b>	<b>Items</b>	<b>Description</b>
<b>1.</b>	<b>Name of Project</b>	4-L of NH 37 from design Ch 0+000 on NH-8 near Karimganj to design Chainage 14+250 near Sutarkandi (Spur Connectivity to Indo/Bangladesh Border) Silchar-Churaibari Pkg-7 in the State of Assam on HAM mode.
<b>2.</b>	<b>Project Length</b>	14.250 km
<b>3.</b>	<b>Project Bid Cost</b>	380.26 Cr.
<b>4.</b>	<b>Authority</b>	National Highways & Infrastructure Development Corporation Limited
<b>5.</b>	<b>Independent Engineer</b>	M/s Technocrats Advisory Services Private Limited in association with M/s MAV Associates LLP
<b>6.</b>	<b>Concessionaire</b>	MKC Badarpur Churaibari Kamakhya (PKG-7) Highways Private Limited
<b>7.</b>	<b>Design Consultant</b>	Geo Designs & Research Pvt. Ltd.
<b>8.</b>	<b>DPR Consultant</b>	Aarvee Associates Architects Engineers & Consultants Pvt. Ltd.
<b>9.</b>	<b>LOA No. &amp; Date</b>	NHIDCL/ Assam/ NH-37/ Sil-Churai/ Pkg-VII/ 233357/ 3087 dated 11.03.2024
<b>10.</b>	<b>Date of Concession Agreement</b>	September 17, 2024
<b>11.</b>	<b>Appointed Date</b>	February 28, 2025
<b>12.</b>	<b>Construction Period</b>	730 days (from Appointed Date) [24-Months]
<b>13.</b>	<b>Schedule Completion Date</b>	February 27, 2027
<b>14.</b>	<b>O&amp;M Period</b>	15 Years from the date of COD

**4-L of NH 37 from design Ch 0+000 on NH-8 near Karimganj to design Chainage 14+250 near Sutarkandi (Spur Connectivity to Indo/Bangladesh Border) Silchar-Churaibari Pkg-7 in the State of Assam on HAM mode.**

14	<b>Project Milestone</b>	
	<b>Milestone- I</b>	<p>The Project Milestone-I shall occur on the date falling on the 256<sup>th</sup> (two hundred and fifty sixth) day from the Appointed Date (i.e., <b>November 11, 2025</b>)-</p> <p>(The concessionaire shall have expended not less than 20% of the total capital cost set forth in the Financial Package and the Concessionaire shall have commenced construction of the Project and achieved 20% Physical Progress)</p>
	<b>Milestone- II</b>	<p><b>438<sup>th</sup> Day from Appointed Date (i.e., May 12, 2026)</b>- (Prior to the occurrence of Project Milestone-II, the Concessionaire shall have expended not less than 35% of the total capital cost set forth in the Financial Package. Provided, however, that at least 70% of the expenditure referred to hereinabove shall have been incurred on physical works which shall not include advances of any kind to any person or expenditure of any kind on plant and machinery and the concessionaire shall have commenced construction of the project and achieved 35% Physical Progress.).</p>
	<b>Milestone- III</b>	<p><b>620<sup>th</sup> Day from Appointed Date (i.e., November 10, 2026)</b> (The concessionaire shall have commenced construction of all Project Facilities and expended not less than 75% of the total capital cost set forth in the Financial Package and the concessionaire shall have commenced construction of the Project and achieved 75% Physical Progress).</p>
	<b>Scheduled Completion Date</b>	<p><b>730<sup>th</sup> Day from Appointed Date (i.e., February 27, 2027)</b></p> <p>The concessionaire shall have completed the Project in accordance with the Concession Agreement.</p>

**4-L of NH 37 from design Ch 0+000 on NH-8 near Karimganj to design Chainage 14+250 near Sutarkandi (Spur Connectivity to Indo/Bangladesh Border) Silchar-Churaibari Pkg-7 in the State of Assam on HAM mode.**

### CHAPTER -3

#### SALIENT FEATURES OF PROJECT HIGHWAY

##### 3.1 Pavement Composition (For Main Carriage Way/ Service Road)

Section	Design Chainage		Stretch in Km.	Pavement Composition in mm.						
	From	To		Sub-Grade	R-GSB	R-WMM	DBM	BC	DLC	PQC
MCW	00+020	12+900	12.880	500.00	200.00	180.00	50.00	40.00	-	-
	12+900	14+380	1.480	500.00	150	-	-	-	150	
				Sub-Grade	GSB	R-WMM	DBM	BC		
Service Road				500.00	200.00	180.00	50.00	30.00		

##### 3.2 Details of New/ Widening of Structures and Project Facilities to be constructed along the project Highway:

Sr. No.	Description		Unit	As per CA	Remarks
1.	Railway over Bridge	New Construction	Nos.	1	
2.	Major Bridge	New Construction	Nos.	3	
3.	Minor Bridge	New Construction	Nos.	7	
		Reconstruction	Nos.	1	
4.	VUP	New Construction	Nos.	2	
5.	LVUP	New Construction	Nos.	9	
6.	SVUP	New Construction	Nos.	1	
7.	Box Underpass	New Construction	Nos.	4	
8.	Box Culvert	New Construction	Nos.	28	
		Reconstruction	Nos.	4	
9.	Hume Pipe Culvert	New Construction	Nos.	20	
10.	Bus Bay		Nos.	2	
11.	Major Junction		Nos.	2	
12.	Minor Junction		Nos.	4	
13.	W-beam Single faced metal crash barrier		Rmt.	17602	
14.	Drain (covered)		Rmt.	2960	

## **CHAPTER -4**

### **SCOPE OF THE WORKS AND PROJECT FACILITIES**

#### **4.1 Scope of Works**

The Schedule-B of the Concession Agreement specifies the scope of works. The broad scope of the works includes the following:

- Reconstruction of existing 2 lane carriageway to 4 lane divided carriageway including strengthening existing carriageway by providing bituminous overlays in accordance with the Specifications and Standards.
- Construction of 1- ROB, 3- Major Bridge, 8- Minor Bridge, 16- Underpasses, 52- Culverts.
- Construction of Slip Road of 4.16 Km

#### **4.2 Project Facilities**

The Schedule-C of the Concession Agreement specifies the project facilities to be constructed for the project highway. The project facilities include the following:

- a) Toll Plaza
- b) Roadside Furniture
  - i. Kilometer and Hectometer Stones
  - ii. Traffic Signs
  - iii. Overhead Sign
  - iv. Road Marking
  - v. Road Delineators
  - vi. Reflective Pavement Markers & Solar Studs
  - vii. Traffic Impact Attenuators
  - viii. Boundary wall and Fencing
- c) Operation and Maintenance centres
- d) Way side Amenities/ Service Areas
- e) Truck Lay-byes
- f) Bus Bay and Bus Shelter
- g) Pedestrian Facilities
- h) Highway Lighting
- i) Rainwater Harvesting
- j) Environmental Management Plan
- k) Land Scaping and Tree Plantation
- l) Advanced Traffic Management System (ATMS)
- m) Highway Petrol Unit
- n) Emergency Medical Services
- o) Crane Services



**4-L of NH 37 from design Ch 0+000 on NH-8 near Karimganj to design Chainage 14+250 near Sutarkandi (Spur Connectivity to Indo/Bangladesh Border) Silchar-Churaibari Pkg-7 in the State of Assam on HAM mode.**

## **CHAPTER -5**

### **PRE-CONSTRUCTION ACTIVITIES**

#### **5.1 Obligations**

##### **Obligations of Authority-**

<b>Sr. No.</b>	<b>Clause No.</b>	<b>Obligation</b>	<b>Status</b>	<b>Remark/ Reference</b>
<b>1</b>	Clause 4.1.2	Condition Precedent	Done	MKCIL/ASSAM/PKG-07/261
<b>2</b>	Article 11	Utilities, Associated Roads and Trees	In Progress	
<b>3</b>	Clause 18.1.2	Safety Consultant	Not done	
<b>4</b>	Article 21	Appointment of Independent Engineer	Done	Partially Mobilized
<b>5</b>	Clause 10.3	Joint Memorandum	Done	

##### **Obligations of Concessionaire-**

<b>Sr. No.</b>	<b>Clause No.</b>	<b>Obligation</b>	<b>Status</b>	<b>Remark/ Reference</b>
<b>1</b>	Clause 9.1	Performance Security	Done	
<b>2</b>	Article 11	Shifting and Relocation Electrical Utilities	In Progress	
<b>3</b>	Article 26	Insurance	Done	
<b>4</b>	Clause 4.1.3 (Schedule-E)	Applicable Permits	Done	
<b>5</b>		A permission of State Govt. for boulders extraction	Done	
<b>6</b>		Permission of Village Panchayet and Pollution Board for installation of crushers	Done	
<b>7</b>		License for use of explosives	N/A	
<b>8</b>		Permission of the State Govt. from drawing water from river/ reservoir	N/A	
<b>9</b>		Labour Licence	Done	
<b>10</b>	Clause 12.1	Quality Assurance Plan	Done	MKCIL/ASSAM/PKG-07/139 dt. 07.04.2025
<b>11</b>		Construction Methodology	Done	MKCIL/ASSAM/PKG-07/150 dt. 14.04.2025

**4-L of NH 37 from design Ch 0+000 on NH-8 near Karimganj to design Chainage 14+250 near Sutarkandi (Spur Connectivity to Indo/Bangladesh Border) Silchar-Churaibari Pkg-7 in the State of Assam on HAM mode.**

## 5.2 Shifting of Utilities

The project works includes shifting/relocation of various utility services along the project road. The details of the utilities/ Hindrances are required to be shifted/ relocated/ removed along the Project Highway is summarized below:

Sl. No.	Utility/ Hindrance Type	Unit	Nos.	Remarks
1.	HT/ LT Lines (including Transformer if any)	Nos.	88.00	In progress
2.	HT/ LT crossing	Nos.	65.00	In progress
3.	Water Pipelines	Kms	4.00	In progress
4.	Water Pipeline Crossing	Nos.	14.00	In progress

## 5.3 Tree Cutting

The tree cutting status is given below for the project highway.

Sr. No.	Description	Total	Remarks
1.	Total Number of Trees	407.00	
2.	Total Felling of Trees	36.00	
3.	Balance Trees	400.00	

## 5.4 Land Acquisition

The detailed working of Existing ROW, Proposed ROW and Land to be Acquired along the project highway are submitted by NHIDCL vide Joint Handover Memorandum on dated 28<sup>th</sup> of February ,2025.

The detail of affected area for construction of the project road including various project facilities which requires prime attention to accelerate the work progress is given below.

### HINDRANCE LIST – CHAINAGE WISE DETAILS

Sr. No.	Issue Description	Side	Chainage		Length Affected (Km)	Remarks
			From	To		
1	Brick industry	BHS	00+300	00+450	0.15	
2	Residential House	BHS	02+600	03+000	0.4	
3	Assam Type Residential House	BHS	03+450	04+500	1.05	
4	Assam/ RCC Type Houses	BHS	05+300	05+650	0.35	
5	Assam Type Residential House	BHS	06+500	06+600	0.1	
6	Assam Type Residential House	BHS	07+200	07+300	0.1	

**4-L of NH 37 from design Ch 0+000 on NH-8 near Karimganj to design Chainage 14+250 near Sutarkandi (Spur Connectivity to Indo/Bangladesh Border) Silchar-Churaibari Pkg-7 in the State of Assam on HAM mode.**

7	Assam Type Residential House	BHS	09+100	09+400	0.3	
8	Assam Type Residential House	LHS	10+700	10+800	0.05	
9	Assam type/ RCC Residential Building	LHS	10+850	10+900	0.025	
10	Assam type/ RCC Residential Building	BHS	11+250	11+400	0.15	
11	Assam type/ RCC Residential Building	BHS	11+900	12+300	0.4	
12	Assam type/ RCC Residential Building	BHS	12+400	14+000	1.6	
<b>Total Hindered Land</b>					<b>4.675</b>	

**4-L of NH 37 from design Ch 0+000 on NH-8 near Karimganj to design Chainage 14+250 near Sutarkandi (Spur Connectivity to Indo/Bangladesh Border) Silchar-Churaibari Pkg-7 in the State of Assam on HAM mode.**

**CHAPTER -6**

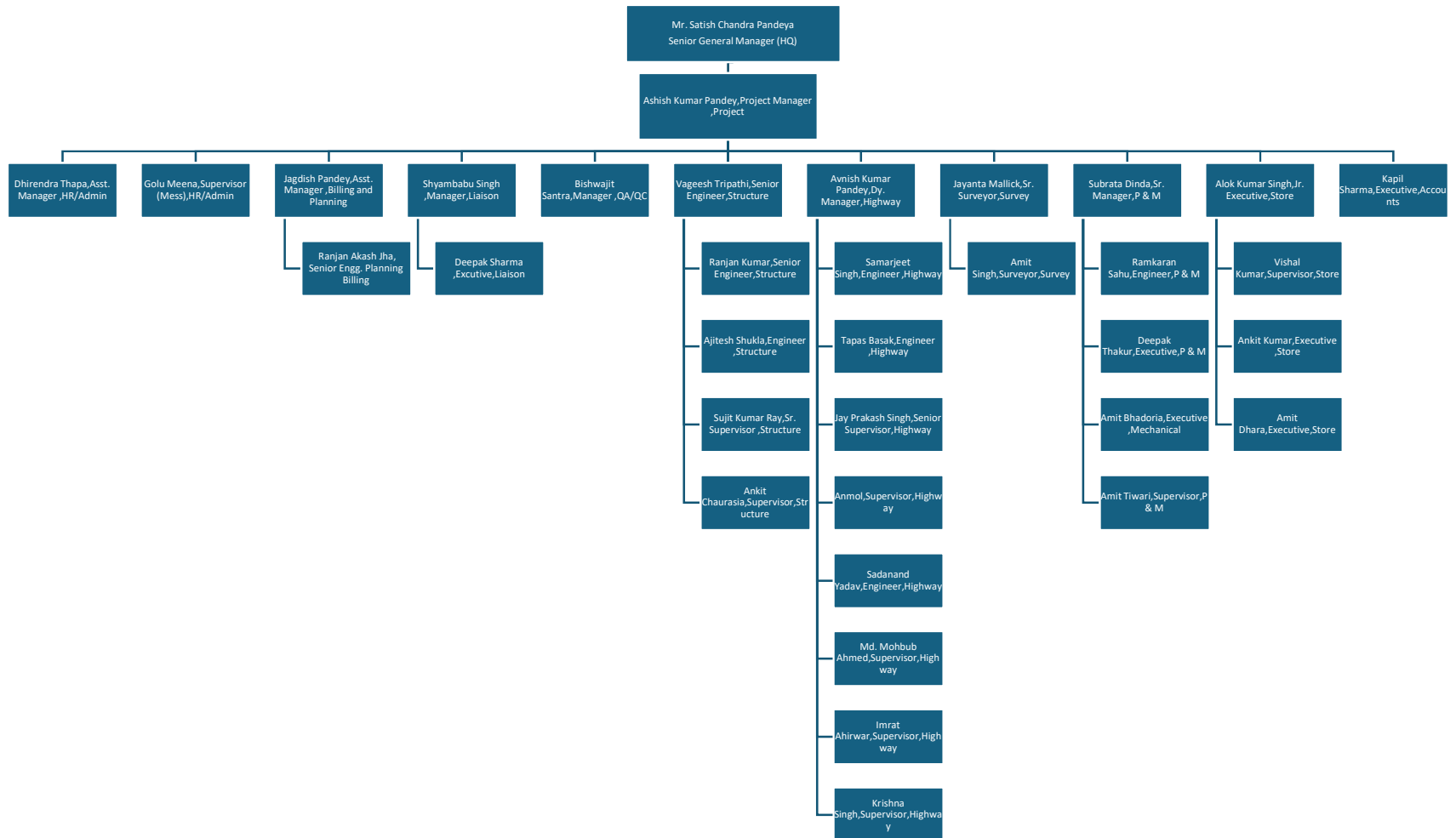
**MOBILIZATION**

**6.1 Manpower Mobilization of Concessionaire**

Sr. No.	Name of Employee	Designation	Department	Remarks
1	Ashish Kumar Pandey	Project Manager	Project	
2	Dhirendra Thapa	Asst. Manager	HR/Admin	
3	Golu Meena	Supervisor (Mess)	HR/Admin	
4	Deepak Sharma	Executive	Liaison	
5	Shyam babu Singh	Manager	Liaison	
6	Jagdish Pandey	Asst. Manager	Billing and Planning	
7	Bishwajit Santra	Manager	QA/QC	
8	Vageesh Tripathi	Senior Engineer	Structure	
9	Ranjan Kumar	Senior Engineer	Structure	
10	Akash Ranjan Jha	Senior Engineer	Billing and Planning	
11	Ajitesh Shukla	Engineer	Structure	
12	Sujit Kumar Ray	Sr. Supervisor	Structure	
13	Ankit Chaurasia	Supervisor	Structure	
14	Avnish Kumar Pandey	Dy. Manager	Highway	
15	Samarjeet Singh	Engineer	Highway	
16	Tapas Basak	Engineer	Highway	
17	Jay Prakash Singh	Senior Supervisor	Highway	
18	Anmol	Supervisor	Highway	
19	Sadanand Yadav	Engineer	Highway	
20	Md. Mohbub Ahmed	Supervisor	Highway	
21	Imrat Ahirwar	Supervisor	Highway	
22	Krishna Singh	Supervisor	Highway	
23	Jayanta Mallick	Sr. Surveyor	Survey	
24	Amit Singh	Surveyor	Survey	
25	Subrata Dinda	Sr. Manager	P & M	
26	Ramkaran Sahu	Engineer	P & M	
27	Deepak Thakur	Executive	P & M	
28	Amit Bhadoria	Executive	Mechanical	
29	Amit Tiwari	Supervisor	P & M	
30	Alok Kumar Singh	Jr. Executive	Store	
31	Vishal Kumar	Supervisor	Store	
32	Ankit Kumar	Executive	Store	
33	Amit Dhara	Executive	Store	
34	Kapil Sharma	Executive	Accounts	

**4-L of NH 37 from design Ch 0+000 on NH-8 near Karimganj to design Chainage 14+250 near Sutarkandi (Spur Connectivity to Indo/Bangladesh Border) Silchar-Churaibari Pkg-7 in the State of Assam on HAM mode.**

**6.2 Organization Chart of Concessionaire**



**4-L of NH 37 from design Ch 0+000 on NH-8 near Karimganj to design Chainage 14+250 near Sutarkandi (Spur Connectivity to Indo/Bangladesh Border) Silchar-Churaibari Pkg-7 in the State of Assam on HAM mode.**

## **CHAPTER-7**

### **DEPLOYMENT OF PLANTS AND EQUIPMENT / PROJECT SET UP PLAN**

#### **7.1 Plants and Equipment Deployed**

<b>S.no</b>	<b>Equipment type</b>	<b>UNIT</b>	<b>QTY</b>	<b>Remarks</b>
1	LMV	Nos.	7	
2	TIPPER	Nos.	28	
3	MOBILE CRANE	Nos.	2	
4	SOIL COMPACTOR	Nos.	5	
5	EXCAVATOR	Nos.	10	
6	BACK HOE LOADER	Nos.	4	
7	DIESEL DISPENCER	Nos.	2	
8	TRANSIT MIXER	Nos.	10	
9	TRACTOR	Nos.	2	
10	GRADER	Nos.	3	
11	BABY ROLLER	Nos.	1	
12	HM PLANT	Nos.	1	
13	BATCHING PLANT	Nos.	1	
14	RE BLOCK PLANT	Nos.	1	
15	DG	Nos.	2	
16	TRAILER	Nos.	1	
17	CRUSHER	Nos.	1	
18	WATER TANKER	Nos.	1	
19	LOADER	Nos.	1	



**4-L of NH 37 from design Ch 0+000 on NH-8 near Karimganj to design Chainage 14+250 near Sutarkandi (Spur Connectivity to Indo/Bangladesh Border) Silchar-Churaibari Pkg-7 in the State of Assam on HAM mode.**

## **CHAPTER-8**

### **DESIGN AND DRAWING**

The project highway has been designed for four lane divided carriageway facility with provision of central raised median of 1.6m. The Concession Agreement envisages design of the project highway by the Concessionaire. The scope of design includes the design for road works, structure works and other project facilities. The drawings need to be prepared and approved for execution of each component of the project highway.

#### **8.1 Design**

The design of road works e.g., plans and profiles, cross sections and other miscellaneous items are being prepared by the Concessionaire for approval and execution of works accordingly. Similarly, the design of various structures e.g., Major bridge, Minor bridges, Vehicular Underpasses, Box Culverts, Hume Pipe Culverts etc. are also being prepared by the Concessionaire for review by Authority/ IE.

#### **8.2 Drawings**

As per requirement of the Contract Agreement various drawings are being prepared for execution and completion of the works. The working drawings of road works and structure works are being prepared by the Concessionaire and submitted to the Authority/ Independent Engineer prior to execution of works at site.

#### **8.3 Status of Approval of Drawings**

The status of drawing submission and approval of GAD for road and structure works as on July-31, 2025, is enclosed in this chapter of the report.

##### **Road Works**

S N	Description	Unit	Total	Submitted	Approval	Review Balance	Remarks
1.	Plan & Profile MCW	Km	14.360	14.360	0.000	14.360	
2.	Plan & Profile SR	Km	4.164	4.164	0.000	4.164	
3.	Typical Cross Section	Nos	1.00	1.00	0.00	1.00	
4.	Pavement Design Report	Nos	1.00	1.00	0.00	1.00	
5.	RE Wall	Nos	20820.00	-	-	-	
6.	Major Junction	Nos	2.00	-	-	-	
7.	Minor Junction	Nos	4.00	-	-	-	
8.	Bus Bay Drawing	Nos	2.00	-	-	-	
9.	Road Signage Plan	Km	14.360	-	-	-	

**4-L of NH 37 from design Ch 0+000 on NH-8 near Karimganj to design Chainage 14+250 near Sutarkandi (Spur Connectivity to Indo/Bangladesh Border) Silchar-Churaibari Pkg-7 in the State of Assam on HAM mode.**

**Structure Works:-**

<b>Structure</b>			
<b>Description</b>	<b>Total Nos</b>	<b>Submitted</b>	<b>Approved</b>
Box Underpass	4	4	4
SVUP	1	1	0
LVUP	9	8	8
VUP	2	0	0
MNB	8	6	0
MJB	3	1	0
ROB	1	1	0
Box Culvert	32	25	25
Pipe Culvert	20	0	0

**4-L of NH 37 from design Ch 0+000 on NH-8 near Karimganj to design Chainage 14+250 near Sutarkandi (Spur Connectivity to Indo/Bangladesh Border) Silchar-Churaibari Pkg-7 in the State of Assam on HAM mode.**

**CHAPTER-9**  
**PROJECT WORK PROGRESS**

**9.1 Work Progress:**

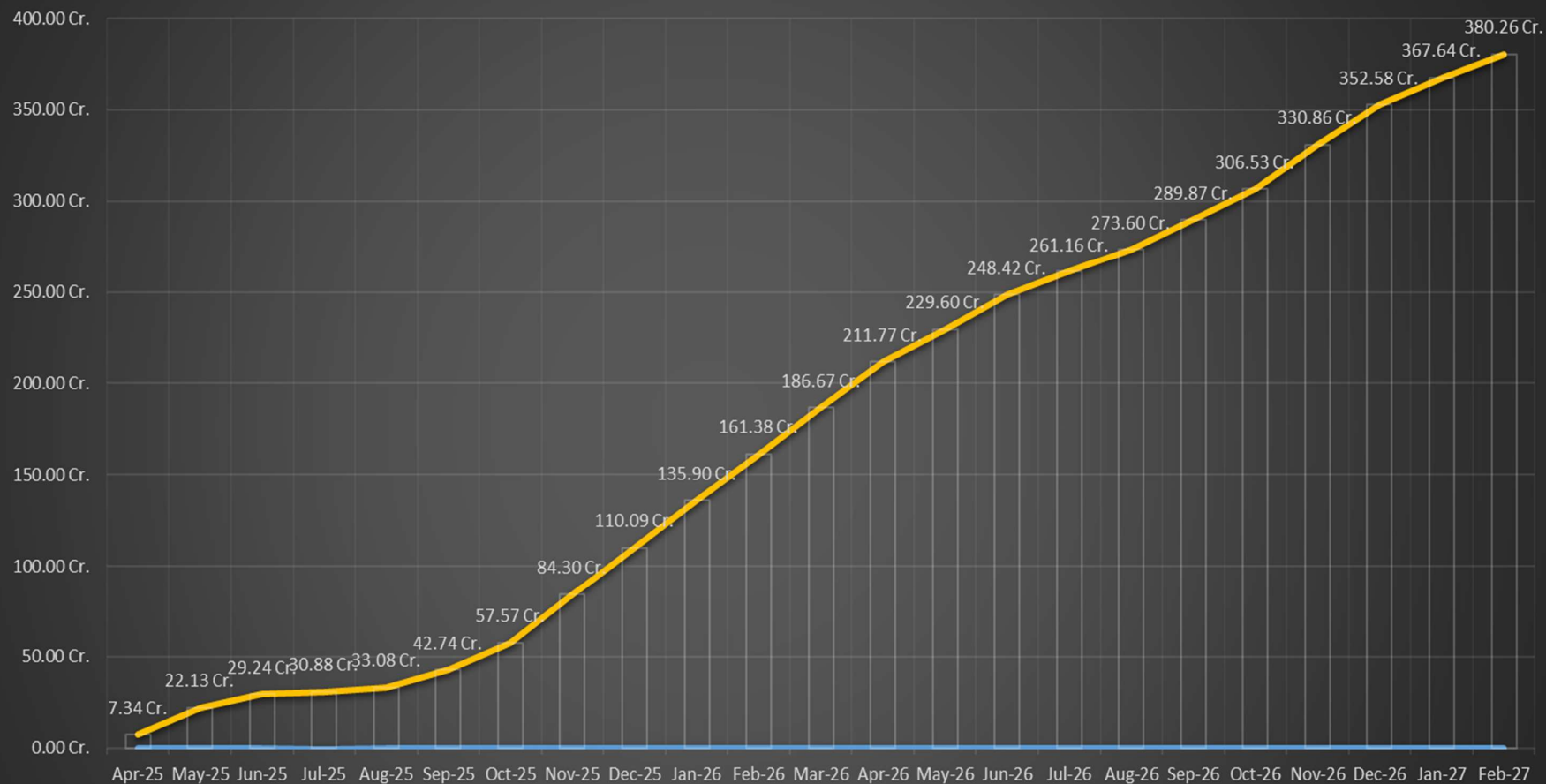
Progress as per Schedule G for the month July-2025.

Item	Stage for measurement of Physical Progress	Unit	Qty.	Weightage in percentage to the contract price	Unit Rate	Qty	Physical Progress (%)	Value of Physical Progress(%)
Road works including culverts, minor bridges, underpasses, overpasses, approaches to ROB/RUB/ Major Bridges/ Structures (but excluding service roads)	<b>B- New 4 Lane Realignment/Bypass</b>							
	(1) Earthwork upto top of Sub-grade	L-Km	27.23	28.70%	4,00,78,960.71	0.13	0.46%	0.13%
	(2) Granular work (Sub-base, base, shoulder)							
	(a) GSB	L-Km	27.23	4.12%	57,51,143.99			
	(b) WMM	L-Km	24.27	2.74%	42,88,948.20			
	(3) Shoulder	L-Km	27.23	0.69%	9,57,102.64			
	(4) Bituminous Work							
	(a) DHM	L-Km	24.27	1.89%	29,66,516.06			
	(b) BC	L-Km	24.27	1.25%	19,51,962.03			
	(5) Rigid Pavement (MC-W)							
	(a) DLC	L-Km	2.96	0.35%	44,75,433.79			
	(b) PQC	L-Km	2.96	0.83%	1,06,67,741.47			
	<b>Sub Total-B</b>							
	<b>C- New Culverts, Minor Bridges, underpasses, overpasses on existing road, realignment, bypasses:</b>							
	1) Culverts (Precast)							
	a) On Casting (40%)	No.	64.00	1.82%	10,83,196.14	17.00	26.56%	0.48%
	b) On Erection (60%)	No.	64.00	2.73%	16,24,794.22	5.00	7.81%	0.21%
	2) Minor Bridge							
	a) Foundation	No.	22.00	2.76%	47,78,175.33			
	b) Sub-Structure	No.	22.00	1.27%	21,95,967.62			
	c) Super-Structure (including Crash Barrier etc. Complete) If pre-cast girders/ segments are used, 40% of the weightage of the stage in percentage to the bid project cost is assigned to the casting of such precast girders/ segments.							
	c-i) Precast Girder - On Casting (40%)	No.	6.00	0.72%	45,47,436.78			
	c-ii) Slab - after Completion of Slab (60%)	No.	16.00	1.08%	25,57,933.19			
	5) Grade Separated Structures							
	a) Underpasses (Box Underpass, SVUP, LVUP, VUP)							
	i) Foundation	No.	38.00	5.32%	53,22,182.07	6.00	15.79%	0.84%
	ii) Sub-Structure	No.	38.00	3.61%	36,16,174.69	6.00	15.79%	0.57%
	iii) Super-Structure (including Crash Barrier, Wearing coat etc. Complete) If pre-cast girders/ segments are used, 40% of the weightage of the stage in percentage to the bid project cost is assigned to the casting of such precast girders/ segments.							
	- Girder Type - Precast Girder (40%)	No.	6.00	1.41%	89,64,598.35			
	- Girder Type - Cast in situ superstructure (60%)	No.	32.00	2.12%	25,21,293.29			
Major Bridge works and ROB/RUB	<b>C- New Major Bridges</b>							
	(1) Foundation (Pile Foundation)	No.	24.00	5.92%	93,84,097.57			
	(2) Sub-structure	No.	24.00	1.62%	25,59,815.73			
	(3) Super-structure (including crash barriers etc. complete) If pre-cast girders/ segments are used, 40% of the weightage of the stage in percentage to the bid project cost is assigned to the casting of such precast girders/ segments.							
	-Super-structure - Precast Girder (40%)	No.	18.00	1.10%	23,16,837.65			
	-Super-structure - Cast in situ superstructure (60%)	No.	18.00	1.65%	34,75,256.47			
	<b>D- New rail-road bridges</b>							
	(a) ROB							
	(1) Foundation	No.	10.00	2.50%	95,15,158.71			
	(2) Sub-structure	No.	10.00	1.06%	40,47,650.45			
	(3) Super-structure (including crash barriers etc. complete) If pre-cast girders/ segments are used, 40% of the weightage of the stage in percentage to the bid project cost is assigned to the casting of such precast girders/ segments.							
	-Super-structure - Precast Girder (40%)	No.	8.00	0.90%	42,71,286.31			
	-Super-structure - Cast in situ superstructure (60%)	No.	8.00	1.35%	64,06,929.46			
	<b>Sub Total-C</b>							
Structures (Elevated Section, Reinforced earth)	<b>4) Reinforced Earth Wall (includes Approaches of ROB, Underpasses, Over passes, Flyover etc.)</b>							
	i) Re Block Casting (5%)	Sq.m	20,820.00	0.03%	60.60			
Electrical and Public Health Utilities	ii) Re Block Erection (95%)	Sq.m	20,820.00	0.63%	1,151.33			
	<b>UTILITY SHIFTING</b>							
	HT/LT lines (including Transformers if any)	Km	4.36	0.04%	3,36,550.04	2.00	45.87%	0.02%
	HT/LT crossings	No.	65.00	1.03%	6,05,167.46	18.00	27.69%	0.29%
Other Works	Water pipeline	Km	4.65	0.03%	2,24,664.82	2.00	43.01%	0.01%
	Water pipeline crossings	No.	14.00	0.06%	1,64,442.40			
	<b>OTHER WORKS</b>							
	i) Service Road / Slip Road	L-Km	4.164	0.96%	87,79,204.05			
Other Works	ii) Road Side Drain	L-Km	2.96	0.44%	56,10,789.71			
	iv) - Road signs, markings, Km Stone, Safety devices							
	(a) Road signs, markings, Km Stone	L-Km	14.36	0.30%	8,04,517.48			
	(b) Concrete Crash Barrier/W Beam Crash Barrier in Road work	L-Km	30.90	2.42%	29,75,950.78			
	v) - Project Facilities							
	(a) Bus bay	No.	2.00	0.08%	15,06,243.98			
	(b) Rain Water Harvesting	No.	28.00	0.17%	2,25,984.04			
	viii) Protection Work							
	(a) Boulder Pitching on Slope / Slope Protection Work	L-Km	4.32	2.32%	2,04,40,582.47			
	(b) Precast Toe Wall / Retaining Wall							
	-On Casting (40%)	L-Km	13.81	4.38%	1,20,73,559.83			
	-On Erection (60%)	L-Km	13.81	6.58%	1,81,10,339.75			
	x) Miscellaneous							
	(a) Street Lighting	No.	280.00	0.10%	13,253.97			
	(b) Junction/Interchange	No.	6.00	0.21%	13,07,460.45			
	(c) Precast Boundary Wall							
	-On Casting (40%)	L-Km	27.23	0.17%	2,34,974.06			
	-On Erection (60%)	L-Km	27.23	0.25%	3,52,461.09			
	(d) ATMS, HTMS, Traffic Aid Posts, Medical aid Posts, Vehicle Rescue Posts, Telecom System	L-Km	28.72	0.29%	3,80,244.14			
<b>Grand Total &gt;&gt;&gt;</b>				<b>100.00%</b>				<b>2.56%</b>

**4-L of NH 37 from design Ch 0+000 on NH-8 near Karimganj to design Chainage 14+250 near Sutarkandi (Spur Connectivity to Indo/Bangladesh Border) Silchar-Churaibari Pkg-7 in the State of Assam on HAM mode.**

**9.2 S Curve**

**S Curve**

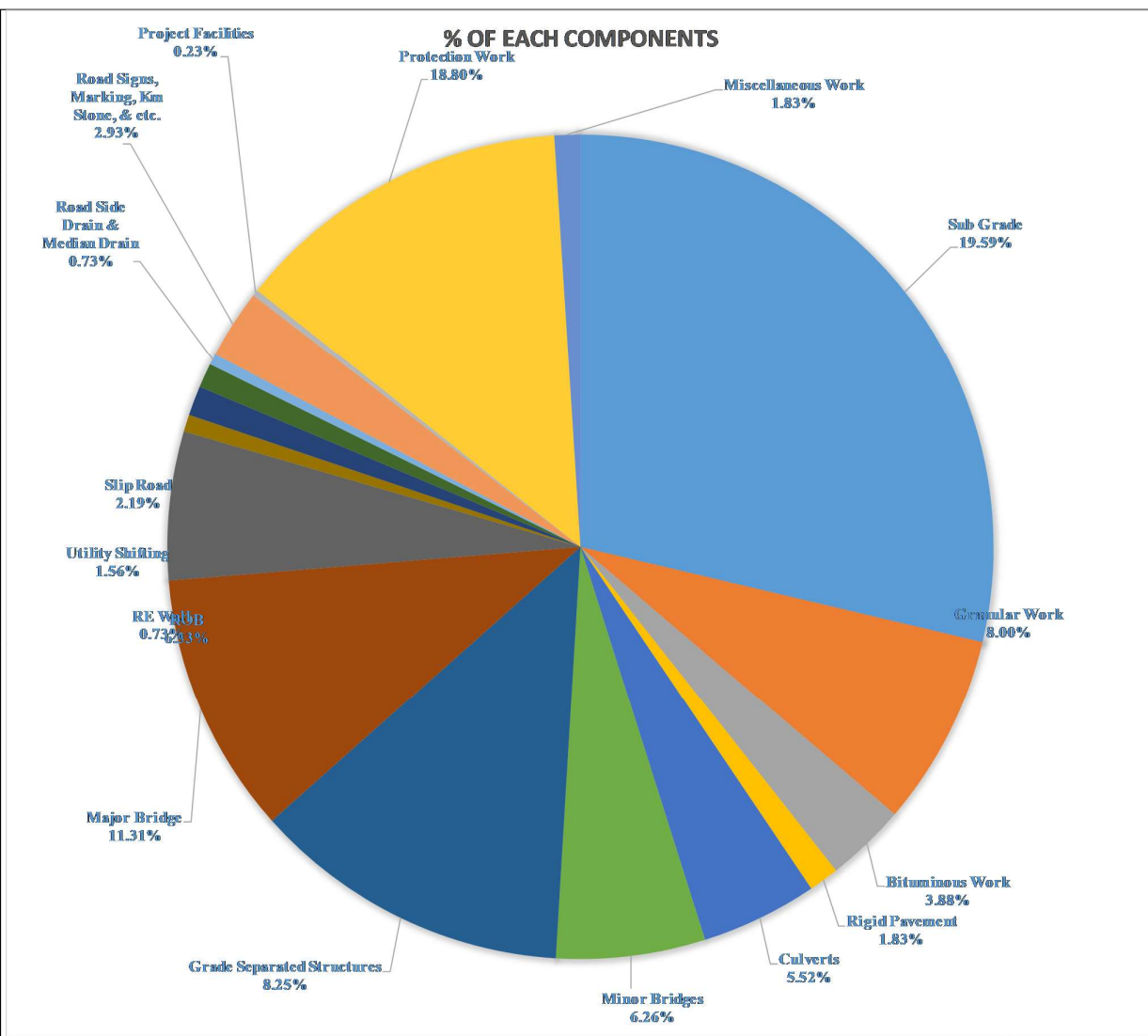


	Apr-25	May-25	Jun-25	Jul-25	Aug-25	Sep-25	Oct-25	Nov-25	Dec-25	Jan-26	Feb-26	Mar-26	Apr-26	May-26	Jun-26	Jul-26	Aug-26	Sep-26	Oct-26	Nov-26	Dec-26	Jan-27	Feb-27
Plan in %	1.93%	3.89%	1.87%	0.43%	0.58%	2.54%	3.90%	7.03%	6.78%	6.79%	6.70%	6.65%	6.60%	4.69%	4.95%	3.35%	3.27%	4.28%	4.38%	6.40%	5.71%	3.96%	3.32%
Cumulative Amount	7.34 Cr	22.13 Cr	29.24 Cr	30.88 Cr	33.08 Cr	42.74 Cr	57.57 Cr	84.30 Cr	110.09 Cr	135.90 Cr	161.38 Cr	186.67 Cr	211.77 Cr	229.60 Cr	248.42 Cr	261.16 Cr	273.60 Cr	289.87 Cr	306.53 Cr	330.86 Cr	352.58 Cr	367.64 Cr	380.26 Cr

**4-L of NH 37 from design Ch 0+000 on NH-8 near Karimganj to design Chainage 14+250 near Sutarkandi (Spur Connectivity to Indo/Bangladesh Border) Silchar-Churaibari Pkg-7 in the State of Assam on HAM mode.**

**9.3 Weightages**

Work Description	% of Each sub components	Amount (Cr.)
Sub Grade	28.70%	1,09,15,10,416.04
Granular Work	7.54%	28,68,02,317.28
Bituminous Work	3.14%	11,93,91,137.27
Rigid Pavement	1.18%	4,48,23,798.78
Culverts	4.56%	17,33,11,383.05
Minor Bridges	5.83%	22,16,42,696.68
Grade Separated Structures	12.47%	47,41,26,532.16
Major Bridge	10.28%	39,09,11,613.49
ROB	5.81%	22,10,53,817.77
RE Wall	0.66%	2,52,32,255.77
Utility Shifting	1.16%	4,41,50,128.16
Slip Road	0.96%	3,65,56,605.68
Road Side Drain & Median Drain	0.44%	1,66,07,937.55
Road Signs, Marking, Km Stone, & etc.	2.72%	10,35,21,653.80
Project Facilities	0.25%	93,40,041.20
Protection Work	13.28%	50,51,42,969.52
Miscellaneous Work	1.01%	3,84,74,695.83
<b>Total</b>	<b>100.00%</b>	<b>3,80,26,00,000.00</b>



### 9.4 Highway Progress:

[illegible]



**4-L of NH 37 from design Ch 0+000 on NH-8 near Karimganj to design Chainage 14+250 near Sutarkandi (Spur Connectivity to Indo/Bangladesh Border) Silchar-Churaibari Pkg-7 in the State of Assam on HAM mode.**

[illegible]

**4-L of NH 37 from design Ch 0+000 on NH-8 near Karimganj to design Chainage 14+250 near Sutarkandi (Spur Connectivity to Indo/Bangladesh Border) Silchar-Churaibari Pkg-7 in the State of Assam on HAM mode.**

RHS		Chainage		LHS	
BC	C&G	6+030	BC 6+190	BC	BC
DBM	Embankment	6+040	6+200	DBM	DBM
R-WMM	Sub-Grade	6+050	6+210	R-WMM	R-WMM
R-GSB		6+060	6+220	R-GSB	R-GSB
		6+070	6+230	Sub-Grade	Sub-Grade
		6+080	6+240	Embankment	Embankment
		6+090	6+250	C&G	C&G
		6+100	6+260		
		6+110	6+270		
		6+120	6+280		
		6+130	6+290		
		6+140	6+300		
		6+150	6+310		
		6+160	6+320		
		6+170	6+330		
		6+180	6+340		
		6+190	6+350		
		6+200	6+360		
		6+210	6+370		
		6+220	6+380		
		6+230	6+390		
		6+240	6+400		
		6+250	6+410		
		6+260	6+420		
		6+270	6+430		
		6+280	6+440		
		6+290	6+450		
		6+300	6+460		
		6+310	6+470		
		6+320	6+480		
		6+330	6+490		
		6+340	6+500		
		6+350	6+510		
		6+360	6+520		
		6+370	6+530		
		6+380	6+540		
		6+390	6+550		
		6+400	6+560		
		6+410	6+570		
		6+420	6+580		
		6+430	6+590		
		6+440	6+600		
		6+450	6+610		
		6+460	6+620		
		6+470	6+630		
		6+480	6+640		
		6+490	6+650		
		6+500	6+660		
		6+510	6+670		
		6+520	6+680		
		6+530	6+690		
		6+540	6+700		
		6+550	6+710		
		6+560	6+720		
		6+570	6+730		
		6+580	6+740		
		6+590	6+750		
		6+600	6+760		
		6+610	6+770		
		6+620	6+780		
		6+630	6+790		
		6+640	6+800		
		6+650	6+810		
		6+660	6+820		
		6+670	6+830		
		6+680	6+840		
		6+690	6+850		
		6+700	6+860		
		6+710	6+870		
		6+720	6+880		
		6+730	6+890		
		6+740	6+900		
		6+750	6+910		
		6+760	6+920		
		6+770	6+930		
		6+780	6+940		
		6+790	6+950		
		6+800	6+960		
		6+810	6+970		
		6+820	6+980		
		6+830	6+990		

[illegible]

RHS	Chainage	LHS					
		BC	DBM	R-WMM	R-GSB	Sub-Grade	Embankment

**4-L of NH 37 from design Ch 0+000 on NH-8 near Karimganj to design Chainage 14+250 near Sutarkandi (Spur Connectivity to Indo/Bangladesh Border) Silchar-Churaibari Pkg-7 in the State of Assam on HAM mode.**

RHS	Chainage	BC	DBM	R-WMM	R-GSB	Sub-Grade	Embankment	C&G
		BC	DBM	R-WMM	R-GSB	Sub-Grade	Embankment	C&G
		BC	DBM	R-WMM	R-GSB	Sub-Grade	Embankment	C&G
		BC	DBM	R-WMM	R-GSB	Sub-Grade	Embankment	C&G
		BC	DBM	R-WMM	R-GSB	Sub-Grade	Embankment	C&G
		BC	DBM	R-WMM	R-GSB	Sub-Grade	Embankment	C&G
LHS	Chainage	BC	DBM	R-WMM	R-GSB	Sub-Grade	Embankment	C&G
		BC	DBM	R-WMM	R-GSB	Sub-Grade	Embankment	C&G
		BC	DBM	R-WMM	R-GSB	Sub-Grade	Embankment	C&G
		BC	DBM	R-WMM	R-GSB	Sub-Grade	Embankment	C&G
		BC	DBM	R-WMM	R-GSB	Sub-Grade	Embankment	C&G
		BC	DBM	R-WMM	R-GSB	Sub-Grade	Embankment	C&G
	11+030							
	11+040							
	11+050							
	11+060							
	11+070	BC 11+073						
	11+080							
	11+090							
	11+100							
	11+110							
	11+120							
	11+130							
	11+140							
	11+150							
	11+160							
	11+170							
	11+180							
	11+190							
	11+200							
	11+210							
	11+220							
	11+230							
	11+240							
	11+250							
	11+260							
	11+270							
	11+280							
	11+290							
	11+300							
	11+310							
	11+320							
	11+330							
	11+340							
	11+350	MNB 11+363 2 x 10.0						
	11+360							
	11+370							
	11+380							
	11+390							
	11+400							
	11+410							
	11+420							
	11+430							
	11+440							
	11+450							
	11+460							
	11+470							
	11+480							
	11+490							
	11+500							
	11+510							
	11+520							
	11+530							
	11+540							
	11+550							
	11+560							
	11+570							
	11+580							
	11+590							
	11+600							
	11+610							
	11+620							
	11+630							
	11+640							
	11+650							
	11+660							
	11+670							
	11+680							
	11+690							
	11+700							
	11+710							
	11+720							
	11+730							
	11+740							
	11+750							
	11+760							
	11+770							
	11+780							
	11+790							
	11+800							
	11+810							
	11+820							
	11+830							
	11+840							
	11+850							
	11+860							
	11+870							
	11+880							
	11+890							
	11+900							
	11+910							
	11+920	BC 11+921						
	11+930							
	11+940							
	11+950							
	11+960							
	11+970							
	11+980							
	11+990							
	12+000							
	12+010							
	12+020							

RHS	Chainage	BC	DBM	R-WMM	R-GSB	Sub-Grade	Embankment	C&G
		BC	DBM	R-WMM	R-GSB	Sub-Grade	Embankment	C&G
		BC	DBM	R-WMM	R-GSB	Sub-Grade	Embankment	C&G
		BC	DBM	R-WMM	R-GSB	Sub-Grade	Embankment	C&G
		BC	DBM	R-WMM	R-GSB	Sub-Grade	Embankment	C&G
		BC	DBM	R-WMM	R-GSB	Sub-Grade	Embankment	C&G
LHS	Chainage	BC	DBM	R-WMM	R-GSB	Sub-Grade	Embankment	C&G
		BC	DBM	R-WMM	R-GSB	Sub-Grade	Embankment	C&G
		BC	DBM	R-WMM	R-GSB	Sub-Grade	Embankment	C&G
		BC	DBM	R-WMM	R-GSB	Sub-Grade	Embankment	C&G
		BC	DBM	R-WMM	R-GSB	Sub-Grade	Embankment	C&G
		BC	DBM	R-WMM	R-GSB	Sub-Grade	Embankment	C&G
	10+030							
	10+040							
	10+050							
	10+060							
	10+070							
	10+080							
	10+090							
	10+100							
	10+110							
	10+120							
	10+130							
	10+140							
	10+150							
	10+160							
	10+170							
	10+180							
	10+190							
	10+200							
	10+210							
	10+220							
	10+230							
	10+240							
	10+250							
	10+260							
	10+270							
	10+280							
	10+290							
	10+300							
	10+310							
	10+320							
	10+330							
	10+340							
	10+350							
	10+360							
	10+370							
	10+380							
	10+390							
	10+400							
	10+410							
	10+420							
	10+430							
	10+440							
	10+450							
	10+460							
	10+470							
	10+480							
	10+490							
	10+500							
	10+510							
	10+520							
	10+530							
	10+540							
	10+550							
	10+560							
	10+570							
	10+580							
	10+590							
	10+600							
	10+610							
	10+620							
	10+630							
	10+640							
	10+650							
	10+660							
	10+670							
	10+680							
	10+690							
	10+700							
	10+710							
	10+720							
	10+730							
	10+740							
	10+750							
	10+760							
	10+770							
	10+780							
	10+790							
	10+800							
	10+810							
	10+820							
	10+830							
	10+840							
	10+850							
	10+860							
	10+870							
	10+880							
	10+890							
	10+900							
	10							

**4-L of NH 37 from design Ch 0+000 on NH-8 near Karimganj to design Chainage 14+250 near Sutarkandi (Spur Connectivity to Indo/Bangladesh Border) Silchar-Churaibari Pkg-7 in the State of Assam on HAM mode.**

RHS		Chainage	LHS
BC	C&G	12+030	BC
DBM	Embankment	12+040	DBM
R-WMM	Sub-Grade	12+050	R-WMM
R-GSB	R-GSB	12+060	R-GSB
		12+070	Sub-Grade
		12+080	Embankment
		12+090	
		12+100	
		12+110	
		12+120	
		12+130	
		12+140	
		12+150	
		12+160	
		12+170	
		12+180	
		12+190	
		12+200	
		12+210	
		12+220	BC 12+223
		12+230	BC 12+223
		12+240	
		12+250	
		12+260	
		12+270	
		12+280	
		12+290	
		12+300	LVP 13+310
		12+310	1 x 12.0
		12+320	LVP 13+310
		12+330	1 x 12.0
		12+340	
		12+350	
		12+360	
		12+370	
		12+380	
		12+390	
		12+400	
		12+410	
		12+420	
		12+430	
		12+440	
		12+450	
		12+460	
		12+470	
		12+480	
		12+490	
		12+500	
		12+510	
		12+520	
		12+530	
		12+540	
		12+550	
		12+560	
		12+570	
		12+580	
		12+590	
		12+600	
		12+610	
		12+620	
		12+630	
		12+640	
		12+650	BC 12+663
		12+660	BC 12+663
		12+670	
		12+680	
		12+690	
		12+700	
		12+710	
		12+720	
		12+730	
		12+740	
		12+750	
		12+760	
		12+770	
		12+780	
		12+790	
		12+800	
		12+810	
		12+820	
		12+830	
		12+840	
		12+850	
		12+860	
		12+870	
		12+880	
		12+890	
		12+900	
		12+910	
		12+920	
		12+930	
		12+940	
		12+950	
		12+960	
		12+970	
		12+980	
		12+990	
		13+000	
		13+010	
		13+020	

RHS	LHS
BC	C&G
DBM	Embankment
R-WMM	Sub-Grade
R-GSB	Chainage
Sub-Grade	BC 13+065
Embankment	BC 13+085
C&G	BC 13+095
	13+030
	13+040
	13+050
	13+060
	13+070
	13+080
	13+090
	13+100
	13+110
	13+120
	13+130
	13+140
	13+150
	13+160
	13+170
	13+180
	13+190
	13+200
	13+210
	13+220
	13+230
	13+240
	13+250
	13+260
	13+270
	13+280
	13+290
	13+300
	13+310
	13+320
	13+330
	13+340
	13+350
	13+360
	13+370
	BC 13+380
	BC 13+390
	13+400
	13+410
	13+420
	13+430
	13+440
	13+450
	13+460
	13+470
	13+480
	13+490
	13+500
	13+510
	13+520
	13+530
	13+540
	13+550
	13+560
	13+570
	13+580
	13+590
	13+600
	13+610
	13+620
	13+630
	13+640
	13+650
	13+660
	13+670
	13+680
	13+690
	13+700
	13+710
	13+720
	13+730
	BC 13+740
	BC 13+750
	13+760
	13+770
	13+780
	13+790
	13+800
	13+810
	13+820
	13+830
	13+840
	13+850
	13+860
	13+870
	13+880
	13+890
	13+900
	13+910
	13+920
	13+930
	13+940
	13+950
	13+960
	13+970
	13+980
	13+990
	14+000
	14+010
	14+020

[illegible]

**4-L of NH 37 from design Ch 0+000 on NH-8 near Karimganj to design Chainage 14+250 near Sutarkandi (Spur Connectivity to Indo/Bangladesh Border) Silchar-Churaibari Pkg-7 in the State of Assam on HAM mode.**

**9.5.1 Status of Box Culvert**

S N	LHS												Box Culvert Chainage	RHS											
	Protection Work	Parapet Wall	Top Slab	Top Haunch	Wall Final Lift	Wall 2nd Lift	Wall 1st Lift	Haunch	Raft	PCC/Granular Bed	Layout & Excavation	Abutment		Layout & Excavation	PCC/Granular Bed	Raft	Haunch	Wall 1st Lift	Wall 2nd Lift	Wall Final Lift	Top Haunch	Top Slab	Parapet Wall	Protection Work	
1												A1	00+043	A1											
2												A2	00+207	A2											
												A1		A1											
3												A2	00+341	A2											
												A1		A1											
4												A2	01+254	A2											
												A1		A1											
5												A2	01+652	A2											
												A1		A1											
6												A2	01+973	A2											
												A1		A1											
7												A2	02+143	A2											
												A1		A1											
8												A2	02+440	A2											
												A1		A1											
9												A2	03+418	A2											
												A1		A1											
10												A2	03+646	A2											
												A1		A1											
11												A2	03+925	A2											
												A1		A1											
12												A2	04+018	A2											
												A1		A1											
13												A2	04+340	A2											
												A1		A1											
14												A2	04+847	A2											
												A1		A1											
15												A2	05+126	A2											
												A1		A1											
16												A2	05+920	A2											
												A1		A1											
17												A2	06+190	A2											
												A1		A1											
18												A2	06+642	A2											
												A1		A1											
19												A2	07+668	A2											
												A1		A1											
20												A2	07+832	A2											
												A1		A1											
21												A2	08+188	A2											
												A1		A1											
22												A2	08+576	A2											
												A1		A1											
23												A2	09+543	A2											
												A1		A1											
24												A2	09+779	A2											
												A1		A1											
25												A2	10+529	A2											
												A1		A1											
26												A2	11+073	A2											
												A1		A1											
27												A2	11+921	A2											
												A1		A1											
28												A2	12+223	A2											
												A1		A1											
29												A2	12+663	A2											
												A1		A1											
30												A2	13+065	A2											
												A1		A1											
31												A2	13+380	A2											
												A1		A1											
32												A2	13+740	A2											
												A1		A1											

1	Not Available	1
2	In Progress	
3	Completed	

**4-L of NH 37 from design Ch 0+000 on NH-8 near Karimganj to design Chainage 14+250 near Sutarkandi (Spur Connectivity to Indo/Bangladesh Border) Silchar-Churaibari Pkg-7 in the State of Assam on HAM mode.**

**9.5.2 Status of Minor Bridge**

SN	LHS												Minor Bridge Chainage	RHS												
	Miscellaneous Item	Crash Barrier	Approach Slab	Desk Slab	PSC Girder	Pedestal	Dirt Wall	Abutment Cap	Abutment Wall	Abutment Pile Cap	Abutment Pile	Layout & Excavation		Abutment	Layout & Excavation	Abutment Pile	Abutment Pile Cap	Abutment Wall	Abutment Cap	Dirt Wall	Pedestal	PSC Girder	Desk Slab	Approach Slab	Crash Barrier	Miscellaneous Item
1													A1	00+742	A1											
													A2		A2											
2													A1	01+768	A1											
													A2		A2											
3													A1	06+313	A1											
													A2		A2											
4													A1	07+306	A1											
													A2		A2											
5													A1	09+003	A1											
													A2		A2											
6													A1	09+293	A1											
													A2		A2											
7													A1	11+363	A1											
													A2		A2											
8													A1	14+195	A1											
													A2		A2											

1	Not Available	1
2	In Progress	
3	Completed	

**4-L of NH 37 from design Ch 0+000 on NH-8 near Karimganj to design Chainage 14+250 near Sutarkandi (Spur Connectivity to Indo/Bangladesh Border) Silchar-Churaibari Pkg-7 in the State of Assam on HAM mode.**

### 9.5.3 Status of Major Bridge

[illegible]

1	Not Available	1
2	In Progress	
3	Completed	

**4-L of NH 37 from design Ch 0+000 on NH-8 near Karimganj to design Chainage 14+250 near Sutarkandi (Spur Connectivity to Indo/Bangladesh Border) Silchar-Churaibari Pkg-7 in the State of Assam on HAM mode.**

**9.5.4 Status of ROB**

SN	LHS											Major Bridge & ROB Chainage	RHS																		
	Miscellaneous Item	Crash Barrier	Approach Slab	Desk Slab	PSC Girder	Pedestal	Dirt Wall	Pier Cap	Pier Column	Abutment/ Pier Cap	Abutment Wall		Abutment/ Pier Pile Cap	Abutment/ Pier Pile	Layout & Excavation	Abutment	Abutment/ Pier Pile	Layout & Excavation	Abutment	Abutment/ Pier Pile Cap	Abutment Wall	Abutment/ Pier Cap	Pier Column	Pier Cap	Dirt Wall	Pedestal	PSC Girder	Desk Slab	Approach Slab	Crash Barrier	Miscellaneous Item
1															A1			A1													
															P1			P1													
															P2			P2													
															P3			P3													
															A2			A2													

1	Not Available	1
2	In Progress	
3	Completed	



**4-L of NH 37 from design Ch 0+000 on NH-8 near Karimganj to design Chainage 14+250 near Sutarkandi (Spur Connectivity to Indo/Bangladesh Border) Silchar-Churaibari Pkg-7 in the State of Assam on HAM mode.**

**9.5.5 Status of Underpass**

SN	LHS											LVUP,SVUP & Box Underpass Chainage	RHS											
	Miscellaneous Item	Crash Barrier	Approach Slab	Top Slab Bracket	Top Slab Haunch	RCC Top Slab	Abutment Wall	Bottom Slab Haunch	Raft	PCC/Granular Bed	Layout & Excavation		Abutment	Layout & Excavation	PCC/Granular Bed	Raft	Bottom Slab Haunch	Abutment Wall	RCC Top Slab	Top Slab Haunch	Top Slab Bracket	Approach Slab	Crash Barrier	Miscellaneous Item
1												A1	LVUP 01+142	A1										
												A2		A2										
2												A1	LVUP 03+886	A1										
												A2		A2										
3												A1	LVUP 04+212	A1										
												A2		A2										
4												A1	LVUP 05+414	A1										
												A2		A2										
5												A1	LVUP 07+213	A1										
												A2		A2										
6												A1	LVUP 09+332	A1										
												A2		A2										
7												A1	LVUP 10+098	A1										
												A2		A2										
8												A1	LVUP 10+834	A1										
												A2		A2										
9												A1	LVUP 12+310	A1										
												A2		A2										
1												A1	SVUP 03+728	A1										
												A2		A2										
1												A1	Box Underpass 02+340	A1										
												A2		A2										
2												A1	Box Underpasss 04+534	A1										
												A2		A2										
3												A1	Box Underpasss 07+906	A1										
												A2		A2										
4												A1	Box Underpass 08+296	A1										
												A2		A2										
1	Not Available		1																					
2	In Progress																							
3	Completed																							

## **CHAPTER-10**

### **QUALITY CONTROL AND MATERIAL**

#### **10.1 Quality Control**

The execution of works is mainly governed by the specified Technical Specifications for the project. The quality control of the works is required to be monitored on daily basis both at site and in the laboratory. Standard formats have been devised to control the required quality of the works. The Concessionaire Engineers are monitoring the required quality control works and maintaining the records accordingly for each item of works being executed.

#### **10.2 Site Laboratory**

The Site Laboratory is established at Base Camp located at CH: -5+600. All the required material tests are being conducted in the laboratory for the project road.

#### **10.3 Materials Testing & Third Party Test**

The testing to be carried out in the site laboratory includes tests of soil, aggregates, cement, steel, sand, embankment fill, sub grade, granular subbase and cement concrete. The details of test conducted up to 31 July, 2025 are enclosed.

##### **10.3.1 Soil and Agreegates**

The test reports for borrow area earth for available borrow area are approved & test reports for Aggregates are also approved for the available Quarry. Test reports for new borrow area earth are submitted to IE for approval.

##### **10.3.2 Cement**

The Concessionaire is using approved sources of Cement as Black Tiger (OPC 53 Grade), Dalmia Cement (OPC 53 Grade), Star Cement (OPC 53 Grade), Amrit Cement (OPC 53 Grade) & Max Cement (OPC 53 Grade) for the project work.

##### **10.3.3 Reinforcement Steel**

The Concessionaire is using approved sources of TMT from M/s Rashmi Metaliks Limited, M/s Shyam Steel Industries limited, M/s SRMB Srijan Private Limited, M/s Shyam Metalics and Energy Limited.

**4-L of NH 37 from design Ch 0+000 on NH-8 near Karimganj to design Chainage 14+250 near Sutarkandi (Spur Connectivity to Indo/Bangladesh Border) Silchar-Churaibari Pkg-7 in the State of Assam on HAM mode.**

**10.3.4 Status of materials source approval & Mix Design**

<b>Cement</b>				
<b>Sr. No.</b>	<b>Brand Name</b>	<b>Letter No.</b>	<b>Status</b>	<b>IE Letter No.</b>
1.	Black Tiger Cement	MKCIL/ASSAM/PKG-07/106 dt. 24.03.2025		
2.	Dalmia Cement	MKCIL/ASSAM/PKG-07/107 dt. 24.03.2025	Principle Approved	TASPL-MAV/NH-37/MKCIL/2025/MAY/34
3.	Max Cement	MKCIL/ASSAM/PKG-07/108 dt. 24.03.2025		
4.	Star Cement	MKCIL/ASSAM/PKG-07/109 dt. 24.03.2025		
5.	Amrit Cement	MKCIL/ASSAM/PKG-07/110 dt. 24.03.2025		

<b>Reinforcement Steel</b>				
<b>Sr. No.</b>	<b>Brand Name</b>	<b>Letter No.</b>	<b>Status</b>	<b>IE Letter No.</b>
1.	Rashmi Metaliks Limited	MKCIL/ASSAM/PKG-07/111 dt. 24.03.2025	Principle Approved	TASPL-MAV/NH-37/MKCIL/2025/MAY/27
2.	Shyam Steel industries Ltd.	MKCIL/ASSAM/PKG-07/112 dt. 24.03.2025	Principle Approved	TASPL-MAV/NH-37/MKCIL/2025/MAY/26
3.	SRMB Srijan Pvt. Ltd.	MKCIL/ASSAM/PKG-07/113 dt. 24.03.2025	Principle Approved	TASPL-MAV/NH-37/MKCIL/2025/MAY/32
4.	Shyam Metalics & Energy Ltd.	MKCIL/ASSAM/PKG-07/132 dt. 04.04.2025		

<b>Admixture</b>				
<b>Sr. No.</b>	<b>Brand Name</b>	<b>Letter No.</b>	<b>Status</b>	<b>IE Letter No.</b>
1.	Berger Paints Pvt. Ltd.	MKCIL/ASSAM/PKG-07/101 dt. 24.03.2025		
2.	CHRYSO India Pvt. Ltd	MKCIL/ASSAM/PKG-07/102 dt. 24.03.2025		
3.	CICO Technologies Ltd.	MKCIL/ASSAM/PKG-07/103 dt. 24.03.2025		
4.	FOSROC Chemicals (India) Ltd.	MKCIL/ASSAM/PKG-07/104 dt. 24.03.2025		
5.	Vista Chemtech Pvt. Ltd.	MKCIL/ASSAM/PKG-07/105 dt. 24.03.2025		

**4-L of NH 37 from design Ch 0+000 on NH-8 near Karimganj to design Chainage 14+250 near Sutarkandi (Spur Connectivity to Indo/Bangladesh Border) Silchar-Churaibari Pkg-7 in the State of Assam on HAM mode.**

**Monthly Laboratory Report**

Summary of Quality Control Test For The Month of JULY-2025																	
Sr.No.	Name of test	Reference as per IS/ MoRT&H	Frequency of Tests	Total Tests Conducted upto Previous Month			No. of Tsts Conducted during this Month			No. of Tests Conducted upto this Month			No. of Tests cChecked by IE			% Checked by IE	Remarks
				Tested	Passed	Failed	Tested	Passed	Failed	Tested	Passed	Failed	Tested	Passed	Failed		
LAB & FIELD TEST'S																	
(I). OGL Samples		IRC:36-2010															
1.1	Free Swelling Index (FSI)	IS : 2720 (P-40)	1 Test / Every 500 m Interval's	32	32	0	1	0	0	33	33	0	0	0	0	0.00	
1.2	Grain size analysis	IS : 2720 (P-4)	1 Test / Every 500 m Interval's	32	32	0	1	0	0	33	33	0	0	0	0	0.00	
1.3	Liquid limits (LL)	IS : 2720 (P-5)	1 Test / Every 500 m Interval's	32	32	0	1	0	0	33	33	0	0	0	0	0.00	
1.4	Plasticity Index (PI)	IS : 2720 (P-5)	1 Test / Every 500 m Interval's	32	32	0	1	0	0	33	33	0	0	0	0	0.00	
1.5	Proctor test (MDD & OMC)	IS : 2720 (P-8)	1 Test / Every 500 m Interval's	32	32	0	1	0	0	33	33	0	0	0	0	0.00	
1.6	California Bearing Ratio Test (CBR)	IS : 2720 (P-16)	As Required	0	0	0		0	0	0	0	0	0	0	0	0.00	
1.7	Field Compaction Test (OGL)	IS : 2720 (P-28)	1 Set / 3000 Sqm. (1Set = 10 Pit's)	322	309	13	1	1	0	323	310	13	0	0	0	0.00	
(II). Borrow area Samples (EMB/SG)		MoRT&H (Clause-305)															
2.1	Free Swelling Index (FSI)	IS : 2720 (P-40)	2 Test's / 3000 Cum.	36	36	0	0	0	0	36	36	0	0	0	0	0.00	
2.2	Grain size analysis (GSA)	IS : 2720 (P-4)	2 Test's / 3000 Cum.	36	36	0	0	0	0	36	36	0	0	0	0	0.00	
2.3	Liquid limits (LL)	IS : 2720 (P-5)	2 Test's / 3000 Cum.	36	36	0	0	0	0	36	36	0	0	0	0	0.00	
2.4	Plasticity Index (PI)	IS : 2720 (P-5)	2 Test's / 3000 Cum.	36	36	0	0	0	0	36	36	0	0	0	0	0.00	
2.5	Proctor test (MDD & OMC)	IS : 2720 (P-8)	2 Test's / 3000 Cum.	36	36	0	0	0	0	36	36	0	0	0	0	0.00	
2.6	California Bearing Ratio Test (CBR)	IS : 2720 (P-16)	1 Test's / 3000 Cum.	18	18	0	0	0	0	18	18	0	0	0	0	0.00	
2.7	Field Compaction Test (Emb)	IS : 2720 (P-28)	1 Set / 3000 Sqm. (1Set = 10 Pit's)	293	272	21	4	3	1	297	275	22	0	0	0	0.00	
2.8	Field Compaction Test (Subgrade)	IS : 2720 (P-28)	1 Set / 2000 Sqm. (1Set = 10 Pit's)	0	0	0	0	0	0	0	0	0	0	0	0	0.00	
(III). Coarse Agg. for Concrete Work's		MoRT&H Table -900-6															
4.1	Gradation of Coarse Aggregate	IS : 2386 (P-1)	1 Test / Every day's work	72	55	17	27	27	0	99	82	17	7	7	0	25.93	
4.2	Flakiness Index (FI)	IS : 2386 (P-1)	1 Test for source / Weekly	18	14	4	4	4	0	22	18	4	1	1	0	25.00	
4.3	Aggregate Impact Value (A.I.V)	IS : 2386 (P-4)	1 Test for source / Weekly	18	14	4	4	4	0	22	18	4	1	1	0	25.00	
4.4	Specific Gravity	IS : 2386 (P-3)	1 Test / Source	3	3	0	0	0	0	3	3	0	0	0	0	0.00	
4.5	Water Absorption	IS : 2386 (P-3)	1 Test / Source	3	3	0	0	0	0	3	3	0	0	0	0	0.00	
4.6	Deleterious Constituents	IS : 2386 (P-2)	1 Test / As Required	0	0	0	0	0	0	0	0	0	0	0	0	0.00	
4.7	Moisture correction	IS : 2386 (P-3)	1 Test / Day	44	44	0	27	27	0	71	71	0	7	7	0	25.93	
4.8	Soundness	IS : 2386 (P-5)	1 Test / Source	0	0	0	0	0	0	0	0	0	0	0	0	0.00	
4.9	Alkali Aggregate Reactivity	IS : 2386 (P-7)	1 Test / Source	0	0	0	0	0	0	0	0	0	0	0	0	0.00	
(IV). Fine Agg. for Concrete		MoRT&H Table -900-6															
5.1	Gradation	IS : 383	1 Test / Every day's work	50	50	0	27	27	0	77	77	0	7	7	0.0	25.93	
5.2	Specific Gravity	IS : 2386 (P-3)	1 Test / Source	3	3	0	0	0	0	3	3	0	0	0	0.0	0.00	
5.3	Water Absorption	IS : 2720 (P-3)	1 Test / Source	3	3	0	0	0	0	3	3	0	0	0	0.0	0.00	
5.4	Silt Content	IS : 383	1 Test / Weekly	14	14	0	4	4	0	18	18	0	1	1	0.0	25.00	
5.5	Moisture correction	IS : 2386 (P-3)	1 Test / Every day's work	44	44	0	27	27	0	71	71	0	7	7	0.0	25.93	
(V). Concrete Cube's Compressive Strength Test		IS: 516															
♣ Grade of Concrete : M-10 PCC																	
6.1	for 7 days	IS : 516	As per Frequency MoRT&H Table 1700-09	13	13	0	2	2	0	15	15	0	1	1	0	50.00	
6.2	for 28 days	IS : 516	As per Frequency MoRT&H Table 1700-09	24	24	0	9	9	0	33	33	0	2	2	0	22.22	
♣ Grade of Concrete : M-15 PCC																	
6.3	for 7 days	IS : 516	As per Frequency MoRT&H Table 1700-09	0	0	0	0	0	0	0	0	0	0	0	0	0.00	
6.4	for 28 days	IS : 516	As per Frequency MoRT&H Table 1700-09	0	0	0	0	0	0	0	0	0	0	0	0	0.00	
♣ Grade of Concrete : M-20 PCC																	
6.5	for 7 days	IS : 516	As per Frequency MoRT&H Table 1700-09	0	0	0	0	0	0	0	0	0	0	0	0	0.00	
6.6	for 28 days	IS : 516	As per Frequency MoRT&H Table 1700-09	0	0	0	0	0	0	0	0	0	0	0	0	0.00	
♣ Grade of Concrete : M-20 RCC																	
6.7	for 7 days	IS : 516	As per Frequency MoRT&H Table 1700-09	0	0	0	0	0	0	0	0	0	0	0	0	0.00	
6.8	for 28 days	IS : 516	As per Frequency MoRT&H Table 1700-09	0	0	0	0	0	0	0	0	0	0	0	0	0.00	
♣ Grade of Concrete : M-20 for KERB																	
6.9	for 7 days	IS : 516	As per Frequency MoRT&H Table 1700-09	0	0	0	0	0	0	0	0	0	0	0	0	0.00	
6.1	for 28 days	IS : 516	As per Frequency MoRT&H Table 1700-09	0	0	0	0	0	0	0	0	0	0	0	0	0.00	
♣ Grade of Concrete : M-25 RCC																	
6.11	for 7 days	IS : 516	As per Frequency MoRT&H Table 1700-09	0	0	0	0	0	0	0	0	0	0	0	0	0.00	
6.12	for 28 days	IS : 516	As per Frequency MoRT&H Table 1700-09	0	0	0	0	0	0	0	0	0	0	0	0	0.00	
♣ Grade of Concrete : M-30 RCC																	
6.13	for 7 days	IS : 516	As per Frequency MoRT&H Table 1700-09	39	39	0	23	23	0	62	62	0	2	2	0	8.70	
6.14	for 28 days	IS : 516	As per Frequency MoRT&H Table 1700-09	71	71	0	43	43	0	114	114	0	5	5	0	11.63	
♣ Grade of Concrete : M-35 RCC																	
6.15	for 7 days	IS : 516	As per Frequency MoRT&H Table 1700-09	5	5	0	7	7	0	12	12	0	0	0	0	0.00	
6.16	for 28 days	IS : 516	As per Frequency MoRT&H Table 1700-09	12	12	0	12	12	0	24	24	0	0	0	0	0.00	
♣ Grade of Concrete : M-35 Pile																	
6.17	for 7 days	IS : 516	As per Frequency MoRT&H Table 1700-09	0	0	0	0	0	0	0	0	0	0	0	0	0.00	
6.18	for 28 days	IS : 516	As per Frequency MoRT&H Table 1700-09	0	0	0	0	0	0	0	0	0	0	0	0	0.00	

**4-L of NH 37 from design Ch 0+000 on NH-8 near Karimganj to design Chainage 14+250 near Sutarkandi (Spur Connectivity to Indo/Bangladesh Border) Silchar-Churaibari Pkg-7 in the State of Assam on HAM mode.**

<b>Grade of Concrete : M-35 RE BLOCK</b>																
6.19	for 7 days	IS: 516	As per Frequency MoRT&H Table 1700-09	0	0	0	0	0	0	0	0	0	0	0	0	0.00
6.2	for 28 days	IS: 516	As per Frequency MoRT&H Table 1700-09	0	0	0	0	0	0	0	0	0	0	0	0	0.00
<b>Grade of Concrete : M-40 RCC</b>																
6.21	for 7 days	IS: 516	As per Frequency MoRT&H Table 1700-09	0	0	0	0	0	0	0	0	0	0	0	0	0.00
6.22	for 28 days	IS: 516	As per Frequency MoRT&H Table 1700-09	0	0	0	0	0	0	0	0	0	0	0	0	0.00
<b>Grade of Concrete : M-45 RCC/PSC</b>																
6.23	for 7 days	IS: 516	As per Frequency MoRT&H Table 1700-09	0	0	0	0	0	0	0	0	0	0	0	0	0.00
6.24	for 28 days	IS: 516	As per Frequency MoRT&H Table 1700-09	0	0	0	0	0	0	0	0	0	0	0	0	0.00
<b>Grouting of PSC Girders</b>																
6.25	for 7 days	IS: 516	As per Frequency MoRT&H	0	0	0	0	0	0	0	0	0	0	0	0	0.00
6.26	for 28 days	IS: 516	As per Frequency MoRT&H	0	0	0	0	0	0	0	0	0	0	0	0	0.00
<b>(VI). Cement tests</b>																
7.1	Fineness of Cement	IS: 4031 (P-1)	1 Test Every Batch of Cement	3	3	0	2	2	0	5	5	0	1	1	0	0.00
7.2	Normal Consistency	IS: 4031 (P-4)	1 Test Every Batch of Cement	3	3	0	2	2	0	5	5	0	1	1	0	0.00
7.3	Initial Setting Time	IS: 4031 (P-5)	1 Test Every Batch of Cement	3	3	0	2	2	0	5	5	0	1	1	0	0.00
7.4	Final Setting time	IS: 4031 (P-5)	1 Test Every Batch of Cement	3	3	0	2	2	0	5	5	0	1	1	0	0.00
7.5	Compressive Strength (03 Days)	IS: 516	1 Test Every Batch of Cement	3	3	0	3	0	0	6	3	0	1	1	0	0.00
7.6	Compressive Strength (07 Days)	IS: 516	1 Test Every Batch of Cement	2	2	0	2	0	0	4	2	0	1	1	0	0.00
7.7	Compressive Strength (28 Days)	IS: 516	1 Test Every Batch of Cement	2	2	0	1	0	0	3	2	0	0	0	0	0.00
7.8	Soundness	IS: 4031 (P-3)	1 Test Every Batch of Cement	0	0	0	0	0	0	0	0	0	0	0	0	0.0
7.9	Specific Gravity	IS: 4031 (P-11)	1 Test Every Batch of Cement	0	0	0	0	0	0	0	0	0	0	0	0	0.0
<b>(VII). Granular Sub-Base (GSB)</b>			<b>MoRT&amp;H Clause - 401</b>													
8.1	Gradation	Table 400-2	1 Test /400 Cum.	0	0	0	0	0	0	0	0	0	0	0	0	0.00
8.2	Liquid limits (LL)	IS: 2720 (P-5)	1 Test /400 Cum.	0	0	0	0	0	0	0	0	0	0	0	0	0.00
8.3	Plasticity Index (PI)	IS: 2720 (P-5)	1 Test /400 Cum.	0	0	0	0	0	0	0	0	0	0	0	0	0.00
8.4	Moisture Prior to Compaction Test	IS: 2720 (P-2)	1 Test /400 Cum.	0	0	0	0	0	0	0	0	0	0	0	0	0.00
8.5	Proctor test (MDD & OMC)	IS: 2720 (P-8)	1 Test Per Source / As Required	0	0	0	0	0	0	0	0	0	0	0	0	0.00
8.6	California Bearing Ratio Test (CBR)	IS: 2720 (P-16)	1 Test Per Source / As Required	0	0	0	0	0	0	0	0	0	0	0	0	0.00
8.7	Water Absorption	IS: 2720 (P-3)	1 Test Per Source / As Required	0	0	0	0	0	0	0	0	0	0	0	0	0.00
8.8	Aggregate Impact Value (AIV)	IS: 2386 (P-4)	As Required	0	0	0	0	0	0	0	0	0	0	0	0	0.00
8.9	Field Compaction Test (GSB)	IS: 2720 (P-28)	1 Set / 1000 Sqm. (1Set = 3 Pit's)	0	0	0	0	0	0	0	0	0	0	0	0	0.00
<b>(VIII). Cement Treated Sub Base (CTSB)</b>			<b>MoRT&amp;H Clause - 403 &amp; IRC-37: 2018</b>													
9.1	Gradation	MoRT&H Table 400-4	1 Test 400 Cum.	0	0	0	0	0	0	0	0	0	0	0	0	0.00
9.2	Liquid limits (LL)	IS: 2720 (P-5)	1 Test 400 Cum.	0	0	0	0	0	0	0	0	0	0	0	0	0.00
9.3	Plasticity Index (PI)	IS: 2720 (P-5)	1 Test 400 Cum.	0	0	0	0	0	0	0	0	0	0	0	0	0.00
9.4	Proctor test (MDD & OMC)	IS: 2720 (P-8)	As Required	0	0	0	0	0	0	0	0	0	0	0	0	0.00
9.5	Unconfined Compressive Strength (UCS)	IS: 516	3 Specimens each 400 ton/ Minimum 2 tests per day	0	0	0	0	0	0	0	0	0	0	0	0	0.00
9.6	Cement Content	IS: 516	3 Specimens each 400 ton/ Minimum 2 tests per day	0	0	0	0	0	0	0	0	0	0	0	0	0.00
9.7	Flexural Strength	IS: 516	3 Specimens each 400 ton/ Minimum 2 tests per day	0	0	0	0	0	0	0	0	0	0	0	0	0.00
9.8	Soundness Test	BIS: 4332 (P-4)	As Required	0	0	0	0	0	0	0	0	0	0	0	0	0.00
9.9	Field Compaction Test (CTSB)	IS: 2720 (P-28)	2 Test's 500 Sqm.	0	0	0	0	0	0	0	0	0	0	0	0	0.00
<b>(IX). Cement Treated Base (CTB)</b>			<b>MoRT&amp;H Clause - 403 &amp; IRC-37: 2018</b>													
10.1	Gradation	MoRT&H Table 400-4	1 Test 400 Cum.	0	0	0	0	0	0	0	0	0	0	0	0	0.00
10.2	Proctor test (MDD & OMC)	IS: 2720 (P-8)	As Required	0	0	0	0	0	0	0	0	0	0	0	0	0.00
10.3	Unconfined Compressive Strength (UCS)	IS: 516	3 Specimens each 400 ton/ Minimum 2 tests per day	0	0	0	0	0	0	0	0	0	0	0	0	0.00
10.4	Cement Content	IS: 516	3 Specimens each 400 ton/ Minimum 2 Tests per day	0	0	0	0	0	0	0	0	0	0	0	0	0.00
10.5	Flexural Strength	IS: 516	3 Specimens each 400 ton/ Minimum 2 Tests per day	0	0	0	0	0	0	0	0	0	0	0	0	0.00
10.6	Soundness Test	BIS: 4332 (P-4)	As Required	0	0	0	0	0	0	0	0	0	0	0	0	0.00
10.7	Field Compaction Test (CTSB)	IS: 2720 (P-28)	2 Test's 500 Sqm.	0	0	0	0	0	0	0	0	0	0	0	0	0.00
<b>(X). Wet Mix Macadam (WMM)</b>			<b>MoRT&amp;H-406</b>													
11.1	Gradation	Table 400-13	1 Test /200 Cum.	0	0	0	0	0	0	0	0	0	0	0	0	0.00
11.2	Atterberg limits (LL & PI)	IS: 2720 (P-5)	1 Test /200 Cum.	0	0	0	0	0	0	0	0	0	0	0	0	0.00
11.3	Proctor test (MDD Vs OMC)	IS: 2720 (P-8)	As Required	0	0	0	0	0	0	0	0	0	0	0	0	0.00
11.4	Aggregate Impact Value (AIV)	IS: 2386 (P-4)	1 Test / 1000 Cum	0	0	0	0	0	0	0	0	0	0	0	0	0.00
11.5	Combined Flakiness & Elongation (FI & EL)	IS: 2386 (P-1)	1 Test /500 Cum	0	0	0	0	0	0	0	0	0	0	0	0	0.00
11.6	Water Absorption	IS: 2386 (P-3)	As Required	0	0	0	0	0	0	0	0	0	0	0	0	0.00
11.7	Soundness	IS: 2386 (P-3)	As Required	0	0	0	0	0	0	0	0	0	0	0	0	0.00
11.8	Field Compaction Test (WMM)	IS: 2720 (P-28)	1 Set / 1000 Sqm. (1Set = 3 Pit's)	0	0	0	0	0	0	0	0	0	0	0	0	0.00
<b>(XI). Aggregate Inter Layer (AIL)</b>			<b>MoRT&amp;H-406</b>													
12.1	Gradation	Table 400-13	1 Test /200 Cum.	0	0	0	0	0	0	0	0	0	0	0	0	0.00
12.2	Atterberg limits (LL & PI)	IS: 2720 (P-5)	1 Test /200 Cum.	0	0	0	0	0	0	0	0	0	0	0	0	0.00
12.3	Proctor test (MDD & OMC)	IS: 2720 (P-8)	As Required	0	0	0	0	0	0	0	0	0	0	0	0	0.00
12.4	Aggregate Impact Value (AIV)	IS: 2386 (P-4)	1 Test / 1000 Cum	0	0	0	0	6	0	0	6	0	0	0	0	0.00
12.5	Combined Flakiness & Elongation (FI & EL)	IS: 2386 (P-1)	1 Test /500 Cum	0	0	0	0	0	0	0	0	0	0	0	0	0.00
12.6	Water Absorption	IS: 2386 (P-3)	As Required	0	0	0	0	0	0	0	0	0	0	0	0	0.00
12.7	Soundness	IS: 2386 (P-3)	As Required	0	0	0	0	0	0	0	0	0	0	0	0	0.00
12.8	Field Compaction Test (AIL)	IS: 2720 (P-28)	1 Set / 1000 Sqm. (1Set = 3 Pit's)	0	0	0	0	0	0	0	0	0	0	0	0	0.00

**4-L of NH 37 from design Ch 0+000 on NH-8 near Karimganj to design Chainage 14+250 near Sutarkandi (Spur Connectivity to Indo/Bangladesh Border) Silchar-Churaibari Pkg-7 in the State of Assam on HAM mode.**

<b>(XII). Dense Bituminous Macadam (DBM)</b>		<b>MoRT&amp;H-500</b>														
13.1	Binder Content & Gradation	As per MoRT&H	1 Test / 400 Tonnes	0	0	0	0	0	0	0	0	0	0	0	0	0.00
13.2	Mix Combined Gradation	As per MoRT&H	1 Test / 400 Tonnes	0	0	0	0	0	0	0	0	0	0	0	0	0.00
13.3	Marshall Test (In Sets)	ASTM-D-1559	1 Set/ 400 Tonnes	0	0	0	0	0	0	0	0	0	0	0	0	0.00
13.4	Aggregate Impact Value (AIV)	IS : 2386 (P-4)	1 Test / 350 Cum	0	0	0	0	0	0	0	0	0	0	0	0	0.00
13.5	Combined Flakiness & Elongation (FI & EI)	IS : 2386 (P-1)	1 Test / 350 Cum	0	0	0	0	0	0	0	0	0	0	0	0	0.00
13.6	Water Absorption & Specific Gravity	IS : 2386 (P-3)	1 Test/ Source & As Required	0	0	0	0	0	0	0	0	0	0	0	0	0.00
13.7	Stripping Value	IS : 6241	1 Test/ Source & As Required	0	0	0	0	0	0	0	0	0	0	0	0	0.00
13.8	Maximum Sp.Gravity(Gmm)	ASTM D 2041	1 Set/ 400 MTMix	0	0	0	0	0	0	0	0	0	0	0	0	0.00
13.9	Density of compacted layer	MoRT&H Sec900	1 Test / 700 Sqm	0	0	0	0	0	0	0	0	0	0	0	0	0.00
13.10	Soundness	IS : 2386 (P-3)	1 Test/ Source & As Required	0	0	0	0	0	0	0	0	0	0	0	0	0.00
13.11	Sand equivalent test	IS : 2720 (P-37)	1 Test/ Source & As Required	0	0	0	0	0	0	0	0	0	0	0	0	0.00
13.12	plasticity Index	MoRT&H Sec900	1 Test/ Source & As Required	0	0	0	0	0	0	0	0	0	0	0	0	0.00
13.13	percentage of Fractured face	MoRT&H Sec900	1 Test/ Source & As Required	0	0	0	0	0	0	0	0	0	0	0	0	0.00
13.14	Polished Stone Value	BS: 812 (P-114)	1 Test/ Source & As Required	0	0	0	0	0	0	0	0	0	0	0	0	0.00
<b>(XIII). Bituminous Concrete (BC)</b>		<b>MoRTH-500</b>														
14.1	Binder Content & Gradation	As per MoRT&H	1 Test / 400 Tonnes	0	0	0	0	0	0	0	0	0	0	0	0	0.00
14.2	Mix Combined Gradation	As per MoRT&H	1 Test / 400 Tonnes	0	0	0	0	0	0	0	0	0	0	0	0	0.00
14.3	Marshall Test (In Sets)	ASTM-D-1559	1 Tet/ 400 Tonnes	0	0	0	0	0	0	0	0	0	0	0	0	0.00
14.4	Aggregate Impact Value (AIV)	IS : 2386 (P-4)	1 Test / 350 Cum	0	0	0	0	0	0	0	0	0	0	0	0	0.00
14.5	Combined Flakiness & Elongation (FI & EI)	IS : 2386 (P-1)	1 Test / 350 Cum	0	0	0	0	0	0	0	0	0	0	0	0	0.00
14.6	Water Absorption & Specific Gravity	IS : 2386 (P-3)	1 Test/ Source & As Required	0	0	0	0	0	0	0	0	0	0	0	0	0.00
14.7	Stripping Value	IS : 6241	1 Test/ Source & As Required	0	0	0	0	0	0	0	0	0	0	0	0	0.00
14.8	Maximum Sp.Gravity(Gmm)	ASTM D 2041	1 set/ 400 MTMix	0	0	0	0	0	0	0	0	0	0	0	0	0.00
14.9	Density of Compacted Layer	MoRT&H Sec900	1 test / 700 Sqm	0	0	0	0	0	0	0	0	0	0	0	0	0.00
14.10	Soundness	IS : 2386 (P-3)	1 Test/ Source & As Required	0	0	0	0	0	0	0	0	0	0	0	0	0.00
14.11	Sand equivalent test	IS : 2720 (P-37)	1 Test/ Source & As Required	0	0	0	0	0	0	0	0	0	0	0	0	0.00
14.12	plasticity Index	MoRT&H Sec900	1 Test/ Source & As Required	0	0	0	0	0	0	0	0	0	0	0	0	0.00
14.13	percentage of Fractured face	MoRT&H Sec900	1 Test/ Source & As Required	0	0	0	0	0	0	0	0	0	0	0	0	0.00
14.14	Polished Stone Value	BS: 812 (P-114)	1 Test/ Source & As Required	0	0	0	0	0	0	0	0	0	0	0	0	0.00
<b>(XIV). Bitumen (VG-40)</b>																
15.1	Softening Point(°C)	IS : 1205	1 Test Per Lot	0	0	0	0	0	0	0	0	0	0	0	0	0.00
15.2	Penetration at 25°C 100gm 5 Sec	IS : 1203	1 Test Per Lot	0	0	0	0	0	0	0	0	0	0	0	0	0.00
15.3	Ductility at 25°C	IS : 1208	As Required	0	0	0	0	0	0	0	0	0	0	0	0	0.00
15.4	Absolute Viscosity at 60°/135°C (CST)	IS : 1206 (P-2)	1 Test Per Lot	0	0	0	0	0	0	0	0	0	0	0	0	0.00
15.5	Kinematic Viscosity at 135°C (CST)	IS : 1206 (P-3)	As Required	0	0	0	0	0	0	0	0	0	0	0	0	0
15.6	Specific Gravity at 27°C	IS : 2380 (P-4)	As Required	0	0	0	0	0	0	0	0	0	0	0	0	0.00
15.7	Flash Pint	IS : 1209 (IS: 1448 P-69)	As Required	0	0	0	0	0	0	0	0	0	0	0	0	0
15.8	Solubility Test	IS : 1216	As Required	0	0	0	0	0	0	0	0	0	0	0	0	0
<b>(XV). MODIFIED BITUMEN (PMB 76E-10)</b>																
16.1	Specific Gravity at 27°C	IS : 2380 (P-4)	As Required	0	0	0	0	0	0	0	0	0	0	0	0	0.00
16.2	Softening Point (°C)	IS : 1205	1 Test Per Lot	0	0	0	0	0	0	0	0	0	0	0	0	0.00
16.3	Seperation, Difference in Softening Point (0°C)	IS : 15462: 2019	1 Test Per Lot	0	0	0	0	0	0	0	0	0	0	0	0	0.00
16.4	Elastic Recovery at 15°C	IS : 15462: 2019	1 Test Per Lot	0	0	0	0	0	0	0	0	0	0	0	0	0.00
<b>(XVI). Emulsion (SS-1)</b>																
17.1	Viscosity @ 25°C	IS : 8887:2004	1 Test Per Lot	0	0	0	0	0	0	0	0	0	0	0	0	0
17.2	Water Content	IS : 8887:2004	As Required	0	0	0	0	0	0	0	0	0	0	0	0	0
17.3	Prime coat	IS : 8887:2004	3 test / Day	0	0	0	0	0	0	0	0	0	0	0	0	0.00
<b>(XVII). Emulsion (RS-1)</b>																
18.1	Viscosity @ 50°C	IS : 8887:2004	1 Test Per Lot	0	0	0	0	0	0	0	0	0	0	0	0	0
18.2	Water Content	IS : 8887:2004	As Required	0	0	0	0	0	0	0	0	0	0	0	0	0
18.3	Tack Coat	IS : 8887:2004	3 test / Day	0	0	0	0	0	0	0	0	0	0	0	0	0.00
<b>(XVIII). Lean Concrete (DLC)</b>		<b>MoRT&amp;H-600</b>														
13.1	Gradation	Table 600-1	1 test / day	0	0	0	0	0	0	0	0	0	0	0	0	0.00
13.2	Field Compaction Test	IS : 2720 (P-28)	1 Set(3 pit) of tests / 2000 sqm.	0	0	0	0	0	0	0	0	0	0	0	0	0.00
13.3	Proctor test (MDD & OMC)	IS : 2720 (P-8)	As required	0	0	0	0	0	0	0	0	0	0	0	0	0.00
13.4	Aggregate Impact Value (AIV)	IS : 2386 (P-4)	As required	0	0	0	0	0	0	0	0	0	0	0	0	0.00
13.5	Flakiness & Elongation (FI & EI)	IS : 2386 (P-1)	As required	0	0	0	0	0	0	0	0	0	0	0	0	0.00
13.6	Water Absorption	IS : 2386 (P-3)	As required	0	0	0	0	0	0	0	0	0	0	0	0	0.00
13.7	Moisture correction	IS : 2386 (P-3)	1 test / Day	0	0	0	0	0	0	0	0	0	0	0	0	0.00
13.8	Compressive Strength (07 day's)	IS : 516	07 days/ Each Day 5 Cube's	0	0	0	0	0	0	0	0	0	0	0	0	0.00

**4-L of NH 37 from design Ch 0+000 on NH-8 near Karimganj to design Chainage 14+250 near Sutarkandi (Spur Connectivity to Indo/Bangladesh Border) Silchar-Churaibari Pkg-7 in the State of Assam on HAM mode.**

(XIX). Pavement Quality Concrete (PQC)			MoRT&H-600													
14.1	Gradation	Table 600-1	1 Test / Day	0	0	0	0	0	0	0	0	0	0	0	0.00	
14.2	Aggregate Impact Value (A.I.V)	IS: 2386 (P-4)	As Required	0	0	0	0	0	0	0	0	0	0	0	0.00	
14.3	Flakiness 7 Elongation (FI & EI)	IS: 2386 (P-1)	As Required	0	0	0	0	0	0	0	0	0	0	0	0.00	
14.4	Water Absorption	IS: 2386 (P-3)	As Required	0	0	0	0	0	0	0	0	0	0	0	0.00	
14.5	Slump Test	IS: 1199	1 Test Each Dumper	0	0	0	0	0	0	0	0	0	0	0	0.00	
14.6	Compressive Strength (07 day's)	IS: 516	Compressive Strength (07 day's)	0	0	0	0	0	0	0	0	0	0	0	0.00	
14.7	Compressive Strength (28 day's)	IS: 516		0	0	0	0	0	0	0	0	0	0	0	0.00	
14.8	Flexural Strength (07 day's)	IS: 516	As per Frequency 02 Beam's /150 Cum (Min. 6 Beam's)	0	0	0	0	0	0	0	0	0	0	0	0.00	
14.9	Flexural Strength (28 day's)	IS: 516		0	0	0	0	0	0	0	0	0	0	0	0.00	
THIRD PARTY TESTS (NABL ACCREDITED LABORATORY)																
(XX). Coarse Aggregates																
18.1	Gradation	IS: 2386 (P-1)	1 Test / Source	2	2	0	0	0	0	2	2	0	0	0	0	0.00
18.2	FI & EI	IS: 2386 (P-1)	1 Test / Source	2	2	0	0	0	0	2	2	0	0	0	0	0.00
18.3	Aggregate Impact Value	IS: 2386 (P-4)	1 Test / Source	2	2	0	0	0	0	2	2	0	0	0	0	0.00
18.4	Specific Gravity	IS: 2386 (P-3)	1 Test / Source	2	2	0	0	0	0	2	2	0	0	0	0	0.00
18.5	Water Absorption	IS: 2386 (P-3)	1 Test / Source	2	2	0	0	0	0	2	2	0	0	0	0	0.00
18.6	Deleterious Content	IS: 2386 (P-1)	1 Test / Source	2	2	0	0	0	0	2	2	0	0	0	0	0.00
18.7	L.A.V.	IS: 2386 (P-4)	1 Test / Source	2	2	0	0	0	0	2	2	0	0	0	0	0.00
18.8	Alkali Aggregate Reactivity	IS: 2386 (P-7)	1 Test / Source	2	2	0	0	0	0	2	2	0	0	0	0	0.00
18.9	Soundness	IS: 2386(P-5)	1 Test / Source	2	2	0	0	0	0	2	2	0	0	0	0	0.00
18.10	Petrographic Examination	IS: 2386 (P-8)	1 Test / Source	2	2	0	0	0	0	2	2	0	0	0	0	0.00
18.11	Stone Polished Value	BS-812 (P-114)	1 Test / Source	2	2	0	0	0	0	2	2	0	0	0	0	0.00
(XXI). Fine Aggregates																
19.1	Gradation	IS: 383	1 Test / Source	2	2	0	0	0	0	2	2	0	0	0	0	0.00
19.2	Specific Gravity	IS: 2386 (P-3)	1 Test / Source	2	2	0	0	0	0	2	2	0	0	0	0	0.00
19.3	Water Absorption	IS: 2386 (P-3)	1 Test / Source	2	2	0	0	0	0	2	2	0	0	0	0	0.00
19.4	Deleterious Content	IS: 2386 (P-1)	1 Test / Source	2	2	0	0	0	0	2	2	0	0	0	0	0.00
19.5	Silt Content	IS: 2386 (P-4)	1 Test / Source	2	2	0	0	0	0	2	2	0	0	0	0	0.00
19.6	Alkali Aggregate Reactivity	IS: 2386 (P-7)	1 Test / Source	2	2	0	0	0	0	2	2	0	0	0	0	0.00
19.7	Soundness	IS: 2386(P-5)	1 Test / Source	2	2	0	0	0	0	2	2	0	0	0	0	0.00
19.8	Organic Impurities	IS: 2386 (P-8)	1 Test / Source	2	2	0	0	0	0	2	2	0	0	0	0	0.00
19.9	Fineness Modulus	IS: 383	1 Test / Source	2	2	0	0	0	0	2	2	0	0	0	0	0.00
(XXII). TMT Bar's (Steel)																
20.1	Physical properties	IS: 1786	< 10mm - 1 sample/25 MT, 10-16mm-1sample/35 MT,	0	0	0	0	0	0	0	0	0	0	0	0	0.00
20.2	Chemical properties	IS: 1786	> 16mm - 1 sample/45 MT	0	0	0	0	0	0	0	0	0	0	0	0	0.00
20.3	Factory Visit	IS: 1786	Elegant Steel Jointly	0	0	0	1	1	0	1	1	0	1	1	0	100.00
(XXIII). Construction Water																
21.1	Suitability for construction	IS: 456	1 Test Per Source / As Required	1	1	0	0	0	0	1	1	0	0	0	0	0.00
(XXIV). Chemical Admixture																
22.1	Physical & Chemical properties	IS: 9103	1 Test/ Per Lot	0	0	0	0	0	0	0	0	0	0	0	0	0.00
(XXV). Cement (OPC-53 Grade)																
23.1	Physical & Chemical properties	IS: 8112	1 Test / Source	0	0	0	0	0	0	0	0	0	0	0	0	0.00
(XXVI). Soil - Borrow Area																
24.1	Mechanical	IS: 2720 (P-39)	1 Test / Source	0	0	0	0	0	0	0	0	0	0	0	0	0.00
(XXVII). NP-4 Hume Pipe Test																
25.1	600 MM	IS: 458	1 test per Lot /of 50 Pipes	0	0	0	0	0	0	0	0	0	0	0	0	0.00
(XXVIII). Bitumen (Emulsion)																
26.1	Bitumen Emulsion SS-1	IS: 8887	1 Test/ Per Lot	0	0	0	0	0	0	0	0	0	0	0	0	0.00
26.2	Bitumen Emulsion RS-1	IS: 8887	1 Test/ Per Lot	0	0	0	0	0	0	0	0	0	0	0	0	0.00
(XXIX). Bitumen (VG-40)																
27.1	Bitumen VG-40	IS: 73	1 Test/ Per Lot	0	0	0	0	0	0	0	0	0	0	0	0	0.00
(XXX). Bitumen (PMB)																
28.1	Bitumen PMB	IS: 15462-2019	1 Test/ Per Lot	0	0	0	0	0	0	0	0	0	0	0	0	0.00
(XXXI). Curing Compound																
29.1	Physical & Chemical properties	ASTM C309	1 Test/ Per Lot	0	0	0	0	0	0	0	0	0	0	0	0	0.00
Remarks:																

**4-L of NH 37 from design Ch 0+000 on NH-8 near Karimganj to design Chainage 14+250 near Sutarkandi (Spur Connectivity to Indo/Bangladesh Border) Silchar-Churaibari Pkg-7 in the State of Assam on HAM mode.**

**CHAPTER-11  
CORRESPONDENCE**

**11.1 Outward Letter**

<b>Sr. No.</b>	<b>Letter No.</b>	<b>Date</b>	<b>Subject</b>	<b>To</b>	<b>Remarks</b>
1	MKCIL/ASSAM/P KG-07/261	01.07.2025	Non-fulfilment of obligations as per the Condition Precedent	GM (NHIDCL)	
2	MKCIL/ASSAM/P KG-07/264	04.07.2025	Submission of profile and credential of Titan technovators for source approval	TL (TASPL)	
3	MKCIL/ASSAM/P KG-07/265	04.07.2025	Submission of profile and credential of Abhuva innovation for source approval	TL (TASPL)	
4	MKCIL/ASSAM/P KG-07/269	07.07.2025	Submission of Monthly Progress Report for the month of June 2025	TL (TASPL)	
5	MKCIL/ASSAM/P KG-07/270	07.07.2025	Regarding Re-Submission of Design & Drawings for Precast Box Underpass	TL (TASPL)	
6	MKCIL/ASSAM/P KG-07/271	07.07.2025	Regarding Submission of Revised Design & Drawings for LVUP Ch. 12+310 (1x12)	TL (TASPL)	
7	MKCIL/ASSAM/P KG-07/272	07.07.2025	Regarding Submission of GFC Drawings for 7 Nos. LVUP (1x12)	TL (TASPL)	
8	MKCIL/ASSAM/P KG-07/273	07.07.2025	Regarding Submission of Typical Design & Drawing for Retaining Wall without Embankment	TL (TASPL)	
9	MKCIL/ASSAM/P KG-07/278	08.07.2025	Regarding Submission of Authorize Stamped Drawings for the Submitted Box Culverts	TL (TASPL)	
10	MKCIL/ASSAM/P KG-07/279	08.07.2025	Regarding the appointment for the member of Dispute Resolution Board	Chairman Brahmaputra Board, Ministry of Jal Shakti, Member (Admn) NHAI.	
11	MKCIL/ASSAM/P KG-07/282	11.07.2025	Regarding Update on Plan and Profile Submission – NHIDCL Meeting on 03.07.2025	TL (TASPL)	
12	MKCIL/ASSAM/P KG-07/284	12.07.2025	Intimation of Force Majeure Event for Landslide	TL (TASPL)	
13	MKCIL/ASSAM/P KG-07/290	17.07.2025	Non-fulfilment of obligations as per the Condition Precedent required to be satisfied by the Authority". - Reminder	GM (NHIDCL)	
14	MKCIL/ASSAM/P KG-07/291	17.07.2025	Submission of Schedule G	TL (TASPL)	
15	MKCIL/ASSAM/P KG-07/293	18.07.2025	Submission of Contract Price Weightage as per Annexure - I of Schedule – G	TL (TASPL)	
16	MKCIL/ASSAM/P KG-07/301	23.07.2025	Compliance on observation on MPR-May-2025	TL (TASPL)	
17	MKCIL/ASSAM/P KG-07/305	28.07.2025	Regarding Submission of Design and Drawing for Major Bridge at Ch. 02+893 (3x37.5m)	TL (TASPL)	
18	MKCIL/ASSAM/P KG-07/307	29.07.2025	Regarding Submission of Design and Drawings of SVUP at Ch.03+728 (1x7)	TL (TASPL)	



**4-L of NH 37 from design Ch 0+000 on NH-8 near Karimganj to design Chainage 14+250 near Sutarkandi (Spur Connectivity to Indo/Bangladesh Border) Silchar-Churaibari Pkg-7 in the State of Assam on HAM mode.**

**11.2 Inward Letter (NHIDCL & TASPL)**

Sr. No.	Letter No.	Date	Subject	From	Remarks
1	TASPL-MAV/NH-37/MKCIL/2025/MAY/34	01.07.2025	Reg: - Source Approval for Dalmia Cement	TASPL	
2	TASPL-MAV/NH-37/MKCIL/2025/MAY/35	04.07.2025	Reg: - Approval of Flexible Pavement design	TASPL	
3	TASPL-MAV/NH-37/MKCIL/2025/MAY/36	04.07.2025	Regarding Approval of Rigid Pavement Design	TASPL	
4	TASPL-MAV/NH-37/MKCIL/2025/MAY/37	07.07.2025	Reg Approval of Design & Drawing of Box Culvert	TASPL	
5	TASPL-MAV/NH-37/MKCIL/2025/MAY/38	07.07.2025	Reg- Regarding Approval of Typical D&D for Precast Toe Wall	TASPL	
6	TASPL-MAV/NH-37/MKCIL/2025/MAY/39	07.07.2025	Reg- Factory Visit for source approval of Titan technovators (Glass Fiber Reinforced Polymer)	TASPL	
7	TASPL-MAV/NH-37/MKCIL/2025/MAY/40	07.07.2025	Reg- Factory Visit for source approval of Abhuva innovation (Glass Fiber Reinforced Polymer)	TASPL	
8	TASPL-MAV/NH-37/MKCIL/2025/MAY/41	07.07.2025	Reg- Regarding Approval of Typical D&D for Boundary Wall	TASPL	
9	TASPL-MAV/NH-37/MKCIL/2025/MAY/42	08.07.2025	Reg- Regarding Approval of Typical D&D for Retaining Wall Without Embankment	TASPL	
10	TASPL-MAV/NH-37/MKCIL/2025/MAY/43	08.07.2025	Reg- Regarding Approval of Revised D&D for LVUP Ch. 12+310	TASPL	
11	TASPL-MAV/NH-37/MKCIL/2025/MAY/44	08.07.2025	Reg- Regarding Approval of Re-submitted D&D for Precast Box Underpass (1x4x4) at Ch.02+340, 07+906 & 08+296.	TASPL	
12	TASPL-MAV/NH-37/MKCIL/2025/MAY/46	10.07.2025	Submission of ROB Design and Drawings for Vetting by IIT	TASPL	
13	NHIDCL/PMU-Karimganj/MKC/Pkg-7/2025-26/370	12.07.2025	Maintenance of existing highways	NHIDCL PMU Karimganj	
14	TASPL-MAV/NH-37/MKCIL/2025/MAY/47	14.07.2025	Observation on monthly progress report for the month of May 2025	TASPL	
15	TASPL-MAV/NH-37/MKCIL/2025/MAY/50	23.07.2025	Regarding Approval of D&D for Test Pile Major Bridge at Ch. 05+322	TASPL	
16	TASPL-MAV/NH-37/MKCIL/2025/MAY/51	23.07.2025	Reg: - List of equipment's for field laboratory as per MoRTH table no 100-2	TASPL	

**4-L of NH 37 from design Ch 0+000 on NH-8 near Karimganj to design Chainage 14+250 near Sutarkandi (Spur Connectivity to Indo/Bangladesh Border) Silchar-Churaibari Pkg-7 in the State of Assam on HAM mode.**

**CHAPTER-12**  
**NON-CONFORMANCE REPORT**

**NIL**

**4-L of NH 37 from design Ch 0+000 on NH-8 near Karimganj to design Chainage 14+250 near Sutarkandi (Spur Connectivity to Indo/Bangladesh Border) Silchar-Churaibari Pkg-7 in the State of Assam on HAM mode.**

**CHAPTER-13  
WEATHER REPORT**

Sl no.	Date	Temperature (In °c)		Humidity (In %)		Rainfall (mm)	Weather Condition
		Minimum	Maximum	Minimum	Maximum		
1	01-07-2025	30.1	32.9	70.0	76.0	20.00	Cloudy/Rainy
2	02-07-2025	30.5	33.1	68.0	82.0	0.00	Sunny
3	03-07-2025	31.3	32.2	78.0	82.0	0.00	Sunny
4	04-07-2025	32.2	33.6	77.0	81.0	12.00	Cloudy/Rainy
5	05-07-2025	28.1	30.7	84.0	89.0	41.30	Cloudy/Rainy
6	06-07-2025	27.1	28.8	85.0	90.0	12.80	Cloudy/Rainy
7	07-07-2025	28.8	30.2	82.0	87.0	40.10	Cloudy/Rainy
8	08-07-2025	28.3	29.4	82.0	89.0	44.80	Cloudy/Rainy
9	09-07-2025	27.9	28.5	86.0	88.0	24.40	Cloudy/Rainy
10	10-07-2025	28.5	30.1	81.0	87.0	12.00	Cloudy/Rainy
11	11-07-2025	29.3	31.4	77.0	83.0	0.00	Sunny
12	12-07-2025	29.7	31.9	78.0	85.0	0.00	Sunny
13	13-07-2025	29.5	31.1	76.0	82.0	14.60	Cloudy/Rainy
14	14-07-2025	28.3	32.1	79.0	81.0	27.40	Cloudy/Rainy
15	15-07-2025	28.4	30.9	78.0	80.0	8.40	Cloudy/Rainy
16	16-07-2025	29.1	31.4	77.0	81.0	18.50	Cloudy/Rainy
17	17-07-2025	27.5	30.4	77.0	79.0	11.40	Cloudy/Rainy
18	18-07-2025	28.4	31.1	81.0	87.0	7.60	Cloudy/Rainy
19	19-07-2025	28.3	32.4	73.0	90.0	0.00	Sunny
20	20-07-2025	29.4	31.6	71.0	88.0	18.40	Cloudy/Rainy
21	21-07-2025	28.3	32.6	72.0	89.0	40.40	Cloudy/Rainy
22	22-07-2025	31.4	35.2	69.0	78.0	12.20	Cloudy/Rainy
23	23-07-2025	30.5	35.6	73.0	81.0	44.80	Cloudy/Rainy
24	24-07-2025	32.6	34.8	65.0	75.0	0.00	Sunny
25	25-07-2025	31.4	34.3	62.0	78.0	16.40	Cloudy/Rainy
26	26-07-2025	32.4	34.5	68.0	80.0	24.10	Cloudy/Rainy
27	27-07-2025	29.4	33.9	69.0	78.0	14.50	Cloudy/Rainy
28	28-07-2025	28.2	33.4	70.0	82.0	28.30	Cloudy/Rainy
29	29-07-2025	29.5	32.3	69.0	79.0	18.20	Cloudy/Rainy
30	30-07-2025	30.1	33.3	70.0	84.0	0.00	Sunny
31	31-07-2025	29.4	32.9	68.0	85.0	25.60	Cloudy/Rainy

Rainfall Data				
Sr.no.	Description	Total Rainfall	Up to previous month	This month
1	Rainfall	2605.2	2067	538.20

**4-L of NH 37 from design Ch 0+000 on NH-8 near Karimganj to design Chainage 14+250 near Sutarkandi (Spur Connectivity to Indo/Bangladesh Border) Silchar-Churaibari Pkg-7 in the State of Assam on HAM mode.**

The maximum & minimum weather records are summarized below:

<b>TEMPERATURE/ RAINFALL PERIOD: 1<sup>st</sup> July, 2025 to 31<sup>st</sup> July, 2025</b>				
<b>Temperature</b>		<b>Rainfall</b>		
<b>Maximum (in ° C)</b>	<b>Minimum (in ° C)</b>	<b>Maximum (in mm)</b>	<b>Minimum (in mm)</b>	<b>Total Days</b>
35.6	27.1	44.8	0	24

**4-L of NH 37 from design Ch 0+000 on NH-8 near Karimganj to design Chainage 14+250 near Sutarkandi (Spur Connectivity to Indo/Bangladesh Border) Silchar-Churaibari Pkg-7 in the State of Assam on HAM mode.**

**CHAPTER-14**  
**ACCIDENT REPORT**

**NIL**

**4-L of NH 37 from design Ch 0+000 on NH-8 near Karimganj to design Chainage 14+250 near Sutarkandi (Spur Connectivity to Indo/Bangladesh Border) Silchar-Churaibari Pkg-7 in the State of Assam on HAM mode.**

## **CHAPTER-15**

### **ROAD MAINTENANCE & SAFETY REPORT**

The Traffic Safety Arrangements during the execution of works is being carried out by the Concessionaire for safe movement of vehicles on the project highway. The Concessionaire has provided sufficient road signs, temporary barriers, gunny bags filled with soil with reflective stickers etc. at the construction sites.

4-L of NH 37 from design Ch 0+000 on NH-8 near Karimganj to design Chainage 14+250 near Sutarkandi (Spur Connectivity to Indo/Bangladesh Border) Silchar-Churaibari Pkg-7 in the State of Assam on HAM mode.

## CHAPTER-16

### SITE PHOTOGRAPH



Reinforcement work in Progress for Box Culvert



Concrete Pouring of Pre-cast Box-culvert Segment



4-L of NH 37 from design Ch 0+000 on NH-8 near Karimganj to design Chainage 14+250 near Sutarkandi (Spur Connectivity to Indo/Bangladesh Border) Silchar-Churaibari Pkg-7 in the State of Assam on HAM mode.



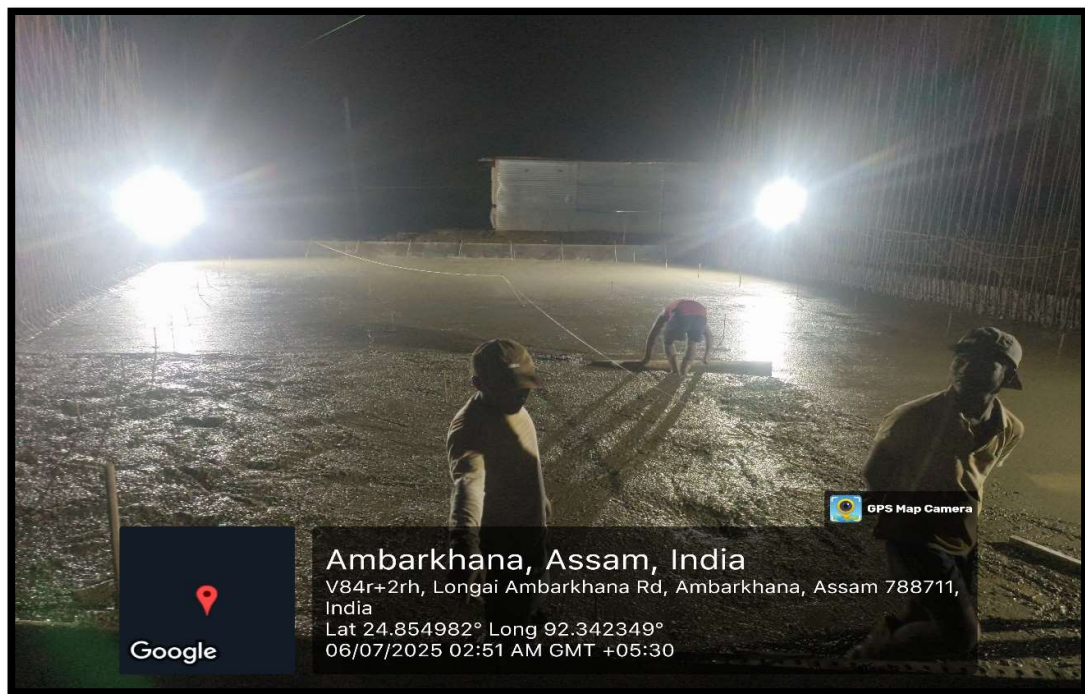
Box Culvert segment curing in Progress



ELECTRIC POLE SHIFTING WORK



**4-L of NH 37 from design Ch 0+000 on NH-8 near Karimganj to design Chainage 14+250 near Sutarkandi (Spur Connectivity to Indo/Bangladesh Border) Silchar-Churaibari Pkg-7 in the State of Assam on HAM mode.**



**Concrete work in Progress for Raft Chng 04+212**



**Reinforcement work in progress for Raft Chng 09+332**

4-L of NH 37 from design Ch 0+000 on NH-8 near Karimganj to design Chainage 14+250 near Sutarkandi (Spur Connectivity to Indo/Bangladesh Border) Silchar-Churaibari Pkg-7 in the State of Assam on HAM mode.



#### EXISTING ROAD MAINTENANCE



4-L of NH 37 from design Ch 0+000 on NH-8 near Karimganj to design Chainage 14+250 near Sutarkandi (Spur Connectivity to Indo/Bangladesh Border) Silchar-Churaibari Pkg-7 in the State of Assam on HAM mode.



**EXISTING ROAD MAINTENANCE**