



Ref No. MKCIL/ASSAM/PKG-07/269

Date: 07.07.2025

To,

The Team Leader.

M/s Technocrats Advisory Services Private Limited

In Association with MAV Associates LLP.

House No. NH-37, Maizdihi, Ward No.-2

(Near-Maa Kali Automobile) P.O. Settlement Road,

PS & Dist. Sribhumi, Assam, Pin-788712

Email: : iekarimganj@gmail.com

Subject: - Four Laning of NH-37 from Design Ch 0+000 on NH 8 near Karimganj to Design Ch. 14+250 near Sutarkandi (Spur connectivity to Indo/Bangladesh Border) Silchar- Churaibari Pkg-7 in the state of Assam.
“Submission of Monthly Progress Report for the month of June-2025”.

Ref.:

1.LOA- NHIDCL/Assam/NH-37/Sil-Churai/Pkg-VII/233357/3087 dated 11.03.2024

2.Concession Agreement on dated 17th September 2024.

Dear Sir,

With reference to above cited subject, hereby we are submitting the Monthly Progress Report for the month of June, 2025 as per Clause 13.1 of Article 13 of Concession Agreement for your kind review and concurrence please.

Assuring you of our best services at all times.

Thanking you,

Your sincerely,



Project Manager

MKC Badarpur Churaibari Kamakhya (PKG-7) Highways Private Limited.

Encl.: As above.

Copy to: General Manager, NHIDCL, PMU-Karimganj, 2nd Floor, Bipin Paul Road, Ward No.- 24, Opp. Basak House, Karimganj, Assam- 788711, Email id- pmukarimganj@gmail.com

4-L of NH 37 from design Ch 0+000 on NH-8 near Karimganj to design Chainage 14+250 near Sutarkandi (Spur Connectivity to Indo/Bangladesh Border) Silchar-Churaibari Pkg-7 in the State of Assam on HAM mode.

Monthly Progress Report

June - 2025



Authority		National Highways Infrastructure Development Corporation Limited
Independent Engineer		M/s Technocrafts Advisory Services Private Limited in association with M/s MAV Associates LLP
Concessionaire		MKC Badarpur Churaibari Kamakhya (PKG-7) Highways Pvt. Ltd.

4-L of NH 37 from design Ch 0+000 on NH-8 near Karimganj to design Chainage 14+250 near Sutarkandi (Spur Connectivity to Indo/Bangladesh Border) Silchar-Churaibari Pkg-7 in the State of Assam on HAM mode.

TABLE OF CONTENTS

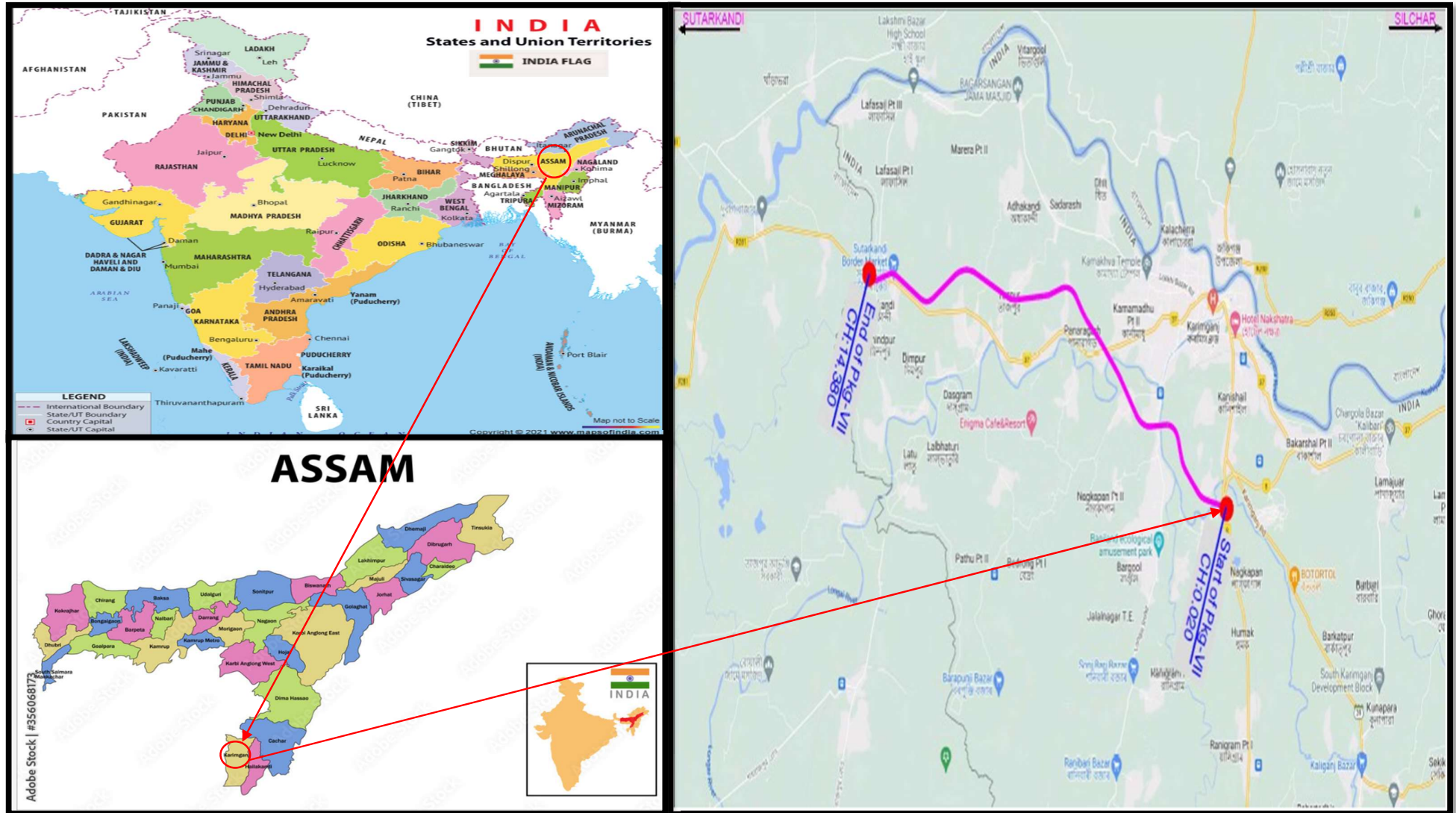
CHAPTERS	DESCRIPTIONS	PAGES
	TABLE OF CONTENTS	
	Project Road Location Map / Index Map	
	EXECUTIVE SUMMARY	
	1. The Project Road	
	2. Mobilization	
	3. Pre-Construction Activity	
	4. EPC Contractor	
	5. Design & Drawing	
	6. Work Program	
	7. Quality Control & Material	
	8. Supervision and Monitoring of Project works	
	9. Site Visit and Meeting	
	10. Schedule Completion Date	
	11. Operation and Maintenance (O&M)	
	12. Area of Concern	
	13. Current Issues	
1	INTRODUCTION	
	General	
2	CONTRACT DATA	
3	SALIENT FEATURES OF PROJECT HIGHWAY	
	3.1 Pavement Composition (MCW)	
	3.2 Details of New/ Widening of Structures and Project Facilities	
4	SCOPE OF WORKS AND PROJECT FACILITIES	
	4.1 Scope of Works	
	4.2 Project Facilities	
5	PRE-CONSTRUCTION ACTIVITY	
	5.1 Obligations	
	5.2 Shifting of Utilities	
	5.3 Tree Cutting	
	5.4 Land Acquisition	

4-L of NH 37 from design Ch 0+000 on NH-8 near Karimganj to design Chainage 14+250 near Sutarkandi (Spur Connectivity to Indo/Bangladesh Border) Silchar-Churaibari Pkg-7 in the State of Assam on HAM mode.

	5.5 Hindrance, Payment Status and LA Status	
6	MOBILIZATION	
	6.1 Manpower Mobilization of Concessionaire	
	6.2 Organization Chart of Concessionaire	
7	DEPLOYMENT OF PLANTS AND EQUIPMENT / PROJECT SET UP PLAN	
	7.1 Plants and Equipment Deployed	
8	DESIGN AND DRAWING	
	8.1 Design	
	8.2 Drawing	
	8.3 Status of Drawings	
9	PROJECT WORK PROGRESS	
	9.1 Work Progress	
	9.2 Structure work Progress	
	9.3 Weightages of Components	
	9.4 S Curve of Project	
	9.5 Detailed Highway & Structure Works Progress	
10	QUALITY CONTROL AND MATERIAL	
	10.1 Quality Control	
	10.2 Site Laboratory	
	10.3 Material Testing	
	10.3.1 Soli and Aggregates	
	10.3.2 Cement	
	10.3.3 Reinforcement Steel	
	10.3.4 Status of Material Sources Approvals & Mix Designs	
	10.3.5 Details of QC Test conducted during the month	
11	CORRESPONDENCE	
12	CURRENT ISSUE	
13	NON-CONFORMANCE REPORT	
14	WEATHER REPORT	
15	ACCIDENT REPORT	
16	ROAD MAINTENANCE AND SAFETY REPORT	
17	PROJECT PROGRESS PHOTOGRAPHS	

4-L of NH 37 from design Ch 0+000 on NH-8 near Karimganj to design Chainage 14+250 near Sutarkandi (Spur Connectivity to Indo/Bangladesh Border) Silchar-Churaibari Pkg-7 in the State of Assam on HAM mode.

PROJECT ROAD LOCATION MAP / INDEX MAP



4-L of NH 37 from design Ch 0+000 on NH-8 near Karimganj to design Chainage 14+250 near Sutarkandi (Spur Connectivity to Indo/Bangladesh Border) Silchar-Churaibari Pkg-7 in the State of Assam on HAM mode.

EXECUTIVE SUMMARY

The Concessionaire has signed the Concession Agreement with National Highway Infrastructure Development Corporation Limited (NHIDCL) on dated September 17, 2024. This Executive Summary presents the works progress of the Project Highway during the construction period from February 28, 2025 to February 27, 2027.

1. The Project Road:

4-L of NH 37 from design Ch 0+000 on NH-8 near Karimganj to design Chainage 14+250 near Sutarkandi (Spur Connectivity to Indo/Bangladesh Border) Silchar-Churaibari Pkg-7 in the State of Assam on HAM mode.

2. Mobilization:

The Concessionaire has mobilized the required Engineers/ Staff Personnel, Machineries/Equipment's, Plants and established main Base Camp at CH: - 5+600 LHS (Darakona).

The details of Key staff personnel deployed are highlighted in the Chapter-6 of this report. The details of deployed Plants and Machineries are included in Chapter-7 of this report.

3. Pre-Construction Activity:

The Details of pre-construction activities have been included in Chapter-5 of this report.

4. EPC Contractor:

MKC Infrastructure Limited

4-L of NH 37 from design Ch 0+000 on NH-8 near Karimganj to design Chainage 14+250 near Sutarkandi (Spur Connectivity to Indo/Bangladesh Border) Silchar-Churaibari Pkg-7 in the State of Assam on HAM mode.

The Details of project highway works have been included in Chapter-09 of this report.

5. Design and Drawing

The status of approval of Working Drawings for road works and structures submitted to Authority as on dated 31-05-2025 is given below.

Sr. No.	Description	UoM	Scope	Submitted	Approved	Balance	Remarks
1.	Plan & Profile (MCW)	Km.	14.360	14.360	0.00	14.360	
2.	Plan & Profile (SR)	Km.	4.16	0.00	0.00	4.16	
3.	RE Wall	SqM.	24984	0.00	0.00	24984.00	
4.	ROB	Nos.	1.00	0.00	0.00	1.00	
5.	Major Bridge	Nos.	3.00	0.00	0.00	3.00	
6.	Minor Bridge	Nos.	8.00	0.00	0.00	8.00	
7.	Underpasses	Nos.	16.00	12.00	12.00	04.00	
8.	Culvert	Nos.	72.00	16.00	0.00	72.00	

The details of design and drawing status have been included in this report on Chapter 8.

6. Work Program:

At the time of commencement of works, the Concessionaire submitted the Stage wise completion schedule Work Program Vide Letter No. MKCIL/ASSAM/PKG-07/162, dated 17.04.2025 for Authority/IE's approval. Based on the monthly works plan, the works is being carried out by the Concessionaire.

7. Quality Control and Material:

The works is being carried out by the Concessionaire as per Quality Assurance Plan submitted to Authority Vide Letter MKCIL/ASSAM/PKG-07/139 on dated 07.04.2025. Each construction activity is being checked/verified as per the RFI's submitted to Authority/ IE by the Concessionaire.

8. Supervision and Monitoring of Project works:

The Authority/ IE along with the concessionaire is supervising and monitoring the execution of works as per requirements of Standard/ Specifications. The monitoring of works is being carried out through the RFI submitted by the Concessionaire and its approval/ rejection after necessary checking/ verification by the Authority/ IE.

9. Site Visit and Meeting:

The Authority/ IE Engineers are regularly visiting the Project Highway.

4-L of NH 37 from design Ch 0+000 on NH-8 near Karimganj to design Chainage 14+250 near Sutarkandi (Spur Connectivity to Indo/Bangladesh Border) Silchar-Churaibari Pkg-7 in the State of Assam on HAM mode.

10. Schedule Completion Date:

As per Schedule-G of the Concession Agreement shall occur on the 730th day from the Appointed Date. The declared Appointed Date being February 28, 2025, the Scheduled completion Date shall occur on February 27, 2027.

11. Operation and Maintenance (O&M):

O&M Obligations – During Operation Period, the Concessionaire shall operate and maintain the project in accordance with this Agreement either by itself, or through the O&M Contractor and if required, modify repair or otherwise make improvements to the Project to comply with the provisions of this Agreement, Applicable Laws and Applicable Permits, and conform to Specifications and Standards and Good industry Practice. The obligations of the concessionaire shall be as per Article 17.

12. Area of Concern/ Availability of site for work:

Procurement of ROW- The existing ROW and the stretches of 11.510 km. are subjected to following:

a) Stretches/ Hindered Free Land out of 14.36 Km:

Stretches/ Hindered Free Land				Encumbrances/ Hindered Land		
Sr. No.	Side	Length (Km)	%	Side	Length (Km)	%
1.	BHS	9.935	69.19%	BHS	4.425	30.81%

b) Hindered due to Tree Cutting:

Description	Total Nos.	Impacted Length (km)	Remarks
Total Trees	407	7.0	

c) Encumbrances due to Religious Structure:

Sr. No.	Types	Chainage	Side	Remarks
1.	Small Temple	2+750	RHS	
2.	Temple	4+150	LHS	
3.	Kabristan	4+300	BHS	
4.	Masjid	4+500	BHS	
5.	Kabristan	7+300	BHS	

d) Details of Hidered Land:

Sr. No.	Issue Description	Side	Chainage		Length Affected (Km)	Remarks
			From	To		

4-L of NH 37 from design Ch 0+000 on NH-8 near Karimganj to design Chainage 14+250 near Sutarkandi (Spur Connectivity to Indo/Bangladesh Border) Silchar-Churaibari Pkg-7 in the State of Assam on HAM mode.

1	Brick industry	BHS	00+300	00+450	0.15	
2	Residential House	BHS	02+600	03+000	0.4	
3	Assam Type Residential House	BHS	03+450	04+500	1.05	
4	Assam/ RCC Type Houses	BHS	05+300	05+400	0.1	
5	Assam Type Residential House	BHS	06+500	06+600	0.1	
6	Assam Type Residential House	BHS	07+200	07+300	0.1	
7	Assam Type Residential House	BHS	09+100	09+400	0.3	
8	Assam Type Residential House	LHS	10+700	10+800	0.05	
9	Assam type/ RCC Residential Building	LHS	10+850	10+900	0.025	
10	Assam type/ RCC Residential Building	BHS	11+250	11+400	0.15	
11	Assam type/ RCC Residential Building	BHS	11+900	12+300	0.4	
12	Assam type/ RCC Residential Building	BHS	12+400	14+000	1.6	
Total Hindered Land					4.425	

13. Current Issues:-

- a) **Non-availability of land:-** As per the Concession Agreement, 100% of the land is to be handed over to the Concessionaire within 90 days from the Appointed Date. However, only approximately 69.19% of the land is currently free from encumbrances.
- b) **Supply of material:-** The supply of materials is also being hampered due to disruption of road connectivity from Kalain to Badarpur (Gammon Bridge) and Kalain to Silchar.
- c) **Water logging in PROW :-** Due to heavy rainfall, water has accumulated along almost the entire length of the project within the ROW, which has hampered construction activities.
- d) **No Entry:-** Daytime restrictions on the entry of construction vehicles into Karimganj have limited material supplies to night hours, reducing construction work time to less than 12 hours per day and hampering overall project progress.

4-L of NH 37 from design Ch 0+000 on NH-8 near Karimganj to design Chainage 14+250 near Sutarkandi (Spur Connectivity to Indo/Bangladesh Border) Silchar-Churaibari Pkg-7 in the State of Assam on HAM mode.

CHAPTER-1

INTRODUCTION

General

The NHIDCL proposes to implement the development, maintenance, and management of the Spur from NH-8 near Karimganj to Sutarkandi (India-Bangladesh border) Km. 0.020 to Km. 14.380 into 4-lane access controlled corridor. The proposed project road has been selected to improve connectivity and reduce travel time from Assam to Tripura. Also, this connectivity will improve international road connectivity between India and Bangladesh. To achieve the above task, NHIDCL has appointed M/s. Aarvee Associates Architects Engineers and Consultants Pvt. Ltd. The Letter of Acceptance was communicated vide letter No. NHIDCL / Assam / DPR / SilcharChuraibari /222542/ 2581 and the agreement was signed on September 1st, 2023.

This executive summary is submitted along with the Final detailed project report to cover the key aspects of the project.

Project Overview

As described earlier the project road is a spur to NH-8 near Karimganj and ends at Sutarkandi. The proposed alignment passes through Karimganj district in the state of Assam connecting villages Karimganj, Fakirabazar, Jarpata and Sutarkandi.

4-L of NH 37 from design Ch 0+000 on NH-8 near Karimganj to design Chainage 14+250 near Sutarkandi (Spur Connectivity to Indo/Bangladesh Border) Silchar-Churaibari Pkg-7 in the State of Assam on HAM mode.

CHAPTER-2

CONTRACT DATA

Sr. No.	Items	Description
1.	Name of Project	4-L of NH 37 from design Ch 0+000 on NH-8 near Karimganj to design Chainage 14+250 near Sutarkandi (Spur Connectivity to Indo/Bangladesh Border) Silchar-Churaibari Pkg-7 in the State of Assam on HAM mode.
2.	Project Length	14.250 km
3.	Project Bid Cost	380.26 Cr.
4.	Authority	National Highways & Infrastructure Development Corporation Limited
5.	Independent Engineer	M/s Technocrats Advisory Services Private Limited in association with M/s MAV Associates LLP
6.	Concessionaire	MKC Badarpur Churaibari Kamakhya (PKG-7) Highways Private Limited
7.	Design Consultant	Geo Designs & Research Pvt. Ltd.
8.	DPR Consultant	Aarvee Associates Architects Engineers & Consultants Pvt. Ltd.
9.	LOA No. & Date	NHIDCL/ Assam/ NH-37/ Sil-Churai/ Pkg-VII/ 233357/ 3087 dated 11.03.2024
10.	Date of Concession Agreement	September 17, 2024
11.	Appointed Date	February 28, 2025
12.	Construction Period	730 days (from Appointed Date) [24-Months]
13.	Schedule Completion Date	February 27, 2027
14.	O&M Period	15 Years from the date of COD

4-L of NH 37 from design Ch 0+000 on NH-8 near Karimganj to design Chainage 14+250 near Sutarkandi (Spur Connectivity to Indo/Bangladesh Border) Silchar-Churaibari Pkg-7 in the State of Assam on HAM mode.

14	Project Milestone	
	Milestone- I	<p>The Project Milestone-I shall occur on the date falling on the 256th (two hundred and fifty sixth) day from the Appointed Date (i.e., February 28, 2025)-</p> <p>(The concessionaire shall have expended not less than 20% of the total capital cost set forth in the Financial Package and the Concessionaire shall have commenced construction of the Project and achieved 20% Physical Progress)</p>
	Milestone- II	<p>438th Day from Appointed Date (i.e., February 28, 2025)- (Prior to the occurrence of Project Milestone-II, the Concessionaire shall have expended not less than 35% of the total capital cost set forth in the Financial Package. Provided, however, that at least 70% of the expenditure referred to hereinabove shall have been incurred on physical works which shall not include advances of any kind to any person or expenditure of any kind on plant and machinery and the concessionaire shall have commenced construction of the project and achieved 35% Physical Progress.).</p>
	Milestone- III	<p>620th Day from Appointed Date (i.e., February 28, 2025) (The concessionaire shall have commenced construction of all Project Facilities and expended not less than 75% of the total capital cost set forth in the Financial Package and the concessionaire shall have commenced construction of the Project and achieved 75% Physical Progress).</p>
	Scheduled Completion Date	<p>730th Day from Appointed Date (i.e., February 27, 2025)</p> <p>The concessionaire shall have completed the Project in accordance with the Concession Agreement.</p>

4-L of NH 37 from design Ch 0+000 on NH-8 near Karimganj to design Chainage 14+250 near Sutarkandi (Spur Connectivity to Indo/Bangladesh Border) Silchar-Churaibari Pkg-7 in the State of Assam on HAM mode.

CHAPTER -3

SALIENT FEATURES OF PROJECT HIGHWAY

3.1 Pavement Composition (For Main Carriage Way/ Service Road)

Section	Design Chainage		Stretch in Km.	Pavement Composition in mm.						
	From	To		Sub-Grade	R-GSB	R-WMM	DBM	BC	DLC	PQC
MCW	00+020	12+900	12.880	500.00	200.00	180.00	50.00	40.00	-	-
	12+900	14+380	1.480	500.00	150	-	-	-	150	
				Sub-Grade	GSB	R-WMM	DBM	BC		
Service Road				500.00	200.00	180.00	50.00	30.00		

3.2 Details of New/ Widening of Structures and Project Facilities to be constructed along the project Highway:

Sr. No.	Description		Unit	As per CA	Remarks
1.	Road over Bridge	New Construction	Nos.	1	
2.	Major Bridge	New Construction	Nos.	3	
3.	Minor Bridge	New Construction	Nos.	7	
		Reconstruction	Nos.	1	
4.	VUP	New Construction	Nos.	2	
5.	LVUP	New Construction	Nos.	9	
6.	SVUP	New Construction	Nos.	1	
7.	Box Underpass	New Construction	Nos.	4	
8.	Box Culvert	New Construction	Nos.	28	
		Reconstruction	Nos.	4	
9.	Hume Pipe Culvert	New Construction	Nos.	20	
10.	Bus Bay		Nos.	2	
11.	Major Junction		Nos.	2	
12.	Minor Junction		Nos.	4	
13.	W-beam Single faced metal crash barrier		Rmt.	17602	
14.	Drain (covered)		Rmt.	2960	

CHAPTER -4

SCOPE OF THE WORKS AND PROJECT FACILITIES

4.1 Scope of Works

The Schedule-B of the Concession Agreement specifies the scope of works. The broad scope of the works includes the following:

- Reconstruction of existing 2 lane carriageway to 4 lane divided carriageway including strengthening existing carriageway by providing bituminous overlays in accordance with the Specifications and Standards.
- Construction of 1- ROB, 3- Major Bridge, 8- Minor Bridge, 16- Underpasses, 52- Culverts.
- Construction of Slip Road of 4.16 Km

4.2 Project Facilities

The Schedule-C of the Concession Agreement specifies the project facilities to be constructed for the project highway. The project facilities include the following:

- a) Toll Plaza
- b) Roadside Furniture
 - i. Kilometer and Hectometer Stones
 - ii. Traffic Signs
 - iii. Overhead Sign
 - iv. Road Marking
 - v. Road Delineators
 - vi. Reflective Pavement Markers & Solar Studs
 - vii. Traffic Impact Attenuators
 - viii. Boundary wall and Fencing
- c) Operation and Maintenance centres
- d) Way side Amenities/ Service Areas
- e) Truck Lay-byes
- f) Bus Bay and Bus Shelter
- g) Pedestrian Facilities
- h) Highway Lighting
- i) Rainwater Harvesting
- j) Environmental Management Plan
- k) Land Scaping and Tree Plantation
- l) Advanced Traffic Management System (ATMS)
- m) Highway Petrol Unit
- n) Emergency Medical Services
- o) Crane Services

4-L of NH 37 from design Ch 0+000 on NH-8 near Karimganj to design Chainage 14+250 near Sutarkandi (Spur Connectivity to Indo/Bangladesh Border) Silchar-Churaibari Pkg-7 in the State of Assam on HAM mode.

CHAPTER -5

PRE-CONSTRUCTION ACTIVITIES

5.1 Obligations

Obligations of Authority-

Sr. No.	Clause No.	Obligation	Status	Remark/ Reference
1	Clause 4.1.2	Condition Precedent	Not Done	MKCIL/ASSAM/PKG-07/261
2	Article 11	Utilities, Associated Roads and Trees	In Progress	
3	Clause 18.1.2	Safety Consultant	Not done	
4	Article 21	Appointment of Independent Engineer	Done	Partially Mobilized
5	Clause 10.3	Joint Memorandum	Done	

Obligations of Concessionaire-

Sr. No.	Clause No.	Obligation	Status	Remark/ Reference
1	Clause 9.1	Performance Security	Done	
2	Article 11	Shifting and Relocation Electrical Utilities	In Progress	
3	Article 26	Insurance	Done	
4	Clause 4.1.3 (Schedule-E)	Applicable Permits	Done	
5		A permission of State Govt. for boulders extraction	Done	
6		Permission of Village Panchayet and Pollution Board for installation of crushers	Done	
7		License for use of explosives	N/A	
8		Permission of the State Govt. from drawing water from river/ reservoir	N/A	
9		Labour Licence	Done	
10	Clause 12.1	Quality Assurance Plan	Done	MKCIL/ASSAM/PKG-07/139 dt. 07.04.2025
11		Construction Methodology	Done	MKCIL/ASSAM/PKG-07/150 dt. 14.04.2025

4-L of NH 37 from design Ch 0+000 on NH-8 near Karimganj to design Chainage 14+250 near Sutarkandi (Spur Connectivity to Indo/Bangladesh Border) Silchar-Churaibari Pkg-7 in the State of Assam on HAM mode.

5.2 Shifting of Utilities

The project works includes shifting/relocation of various utility services along the project road. The details of the utilities/ Hindrances are required to be shifted/ relocated/ removed along the Project Highway is summarized below:

Sl. No.	Utility/ Hindrance Type	Unit	Nos.	Remarks
1.	HT/ LT Lines (including Transformer if any)	Nos.	88.00	In progress
2.	HT/ LT crossing	Nos.	65.00	In progress
3.	Water Pipelines	Kms	4.00	In progress
4.	Water Pipeline Crossing	Nos.	14.00	In progress

5.3 Tree Cutting

The tree cutting status is given below for the project highway.

Sr. No.	Description	Total	Remarks
1.	Total Number of Trees	407.00	
2.	Total Felling of Trees	36.00	
3.	Balance Trees	371.00	

5.4 Land Acquisition

The detailed working of Existing ROW, Proposed ROW and Land to be Acquired along the project highway are submitted by NHIDCL vide Joint Handover Memorandum on dated 28th of February ,2025.

The detail of affected area for construction of the project road including various project facilities which requires prime attention to accelerate the work progress is given below.

HINDRANCE LIST – CHAINAGE WISE DETAILS

Sr. No.	Issue Description	Side	Chainage		Length Affected (Km)	Remarks
			From	To		
1	Brick industry	BHS	00+300	00+450	0.15	
2	Residential House	BHS	02+600	03+000	0.4	
3	Assam Type Residential House	BHS	03+450	04+500	1.05	
4	Assam/ RCC Type Houses	BHS	05+300	05+400	0.1	
5	Assam Type Residential House	BHS	06+500	06+600	0.1	
6	Assam Type Residential House	BHS	07+200	07+300	0.1	

4-L of NH 37 from design Ch 0+000 on NH-8 near Karimganj to design Chainage 14+250 near Sutarkandi (Spur Connectivity to Indo/Bangladesh Border) Silchar-Churaibari Pkg-7 in the State of Assam on HAM mode.

7	Assam Type Residential House	BHS	09+100	09+400	0.3	
8	Assam Type Residential House	LHS	10+700	10+800	0.05	
9	Assam type/ RCC Residential Building	LHS	10+850	10+900	0.025	
10	Assam type/ RCC Residential Building	BHS	11+250	11+400	0.15	
11	Assam type/ RCC Residential Building	BHS	11+900	12+300	0.4	
12	Assam type/ RCC Residential Building	BHS	12+400	14+000	1.6	
Total Hindered Land					4.425	

4-L of NH 37 from design Ch 0+000 on NH-8 near Karimganj to design Chainage 14+250 near Sutarkandi (Spur Connectivity to Indo/Bangladesh Border) Silchar-Churaibari Pkg-7 in the State of Assam on HAM mode.

CHAPTER -6

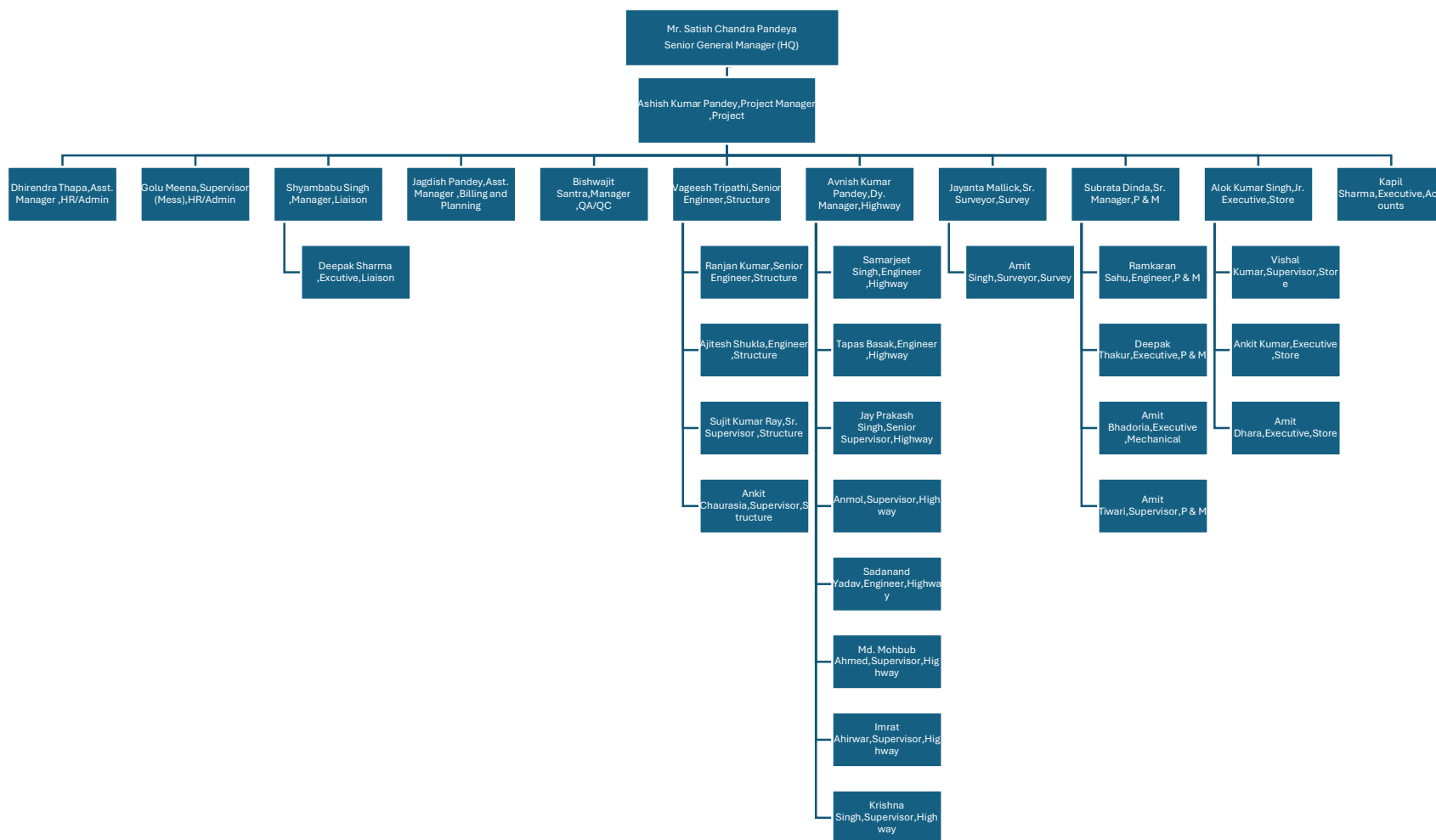
MOBILIZATION

6.1 Manpower Mobilization of Concessionaire

Sr. No.	Name of Employee	Designation	Department	Remarks
1	Ashish Kumar Pandey	Project Manager	Project	
2	Dhirendra Thapa	Asst. Manager	HR/Admin	
3	Golu Meena	Supervisor (Mess)	HR/Admin	
4	Deepak Sharma	Executive	Liaison	
5	Shyam babu Singh	Manager	Liaison	
6	Jagdish Pandey	Asst. Manager	Billing and Planning	
7	Bishwajit Santra	Manager	QA/QC	
8	Vageesh Tripathi	Senior Engineer	Structure	
9	Ranjan Kumar	Senior Engineer	Structure	
10	Ajitesh Shukla	Engineer	Structure	
11	Sujit Kumar Ray	Sr. Supervisor	Structure	
12	Ankit Chaurasia	Supervisor	Structure	
13	Avnish Kumar Pandey	Dy. Manager	Highway	
14	Samarjeet Singh	Engineer	Highway	
15	Tapas Basak	Engineer	Highway	
16	Jay Prakash Singh	Senior Supervisor	Highway	
17	Anmol	Supervisor	Highway	
18	Sadanand Yadav	Engineer	Highway	
19	Md. Mohbub Ahmed	Supervisor	Highway	
20	Imrat Ahirwar	Supervisor	Highway	
21	Krishna Singh	Supervisor	Highway	
22	Jayanta Mallick	Sr. Surveyor	Survey	
23	Amit Singh	Surveyor	Survey	
24	Subrata Dinda	Sr. Manager	P & M	
25	Ramkaran Sahu	Engineer	P & M	
26	Deepak Thakur	Executive	P & M	
27	Amit Bhadoria	Executive	Mechanical	
28	Amit Tiwari	Supervisor	P & M	
29	Alok Kumar Singh	Jr. Executive	Store	
30	Vishal Kumar	Supervisor	Store	
31	Ankit Kumar	Executive	Store	
32	Amit Dhara	Executive	Store	
33	Kapil Sharma	Executive	Accounts	

4-L of NH 37 from design Ch 0+000 on NH-8 near Karimganj to design Chainage 14+250 near Sutarkandi (Spur Connectivity to Indo/Bangladesh Border) Silchar-Churaibari Pkg-7 in the State of Assam on HAM mode.

6.2 Organization Chart of Concessionaire



4-L of NH 37 from design Ch 0+000 on NH-8 near Karimganj to design Chainage 14+250 near Sutarkandi (Spur Connectivity to Indo/Bangladesh Border) Silchar-Churaibari Pkg-7 in the State of Assam on HAM mode.

CHAPTER-7

DEPLOYMENT OF PLANTS AND EQUIPMENT / PROJECT SET UP PLAN

7.1 Plants and Equipment Deployed

S.no	Equipment type	UNIT	QTY	Remarks
1	LMV	Nos.	7	
2	TIPPER	Nos.	28	
3	MOBILE CRANE	Nos.	2	
4	SOIL COMPACTOR	Nos.	5	
5	EXCAVATOR	Nos.	10	
6	BACK HOE LOADER	Nos.	4	
7	DIESEL DISPENCER	Nos.	2	
8	TRANSIT MIXER	Nos.	10	
9	TRACTOR	Nos.	2	
10	GRADER	Nos.	3	
11	BABY ROLLER	Nos.	1	
12	HM PLANT	Nos.	1	
13	BATCHING PLANT	Nos.	1	
14	RE BLOCK PLANT	Nos.	1	
15	DG	Nos.	2	
16	TRAILER	Nos.	1	
17	CRUSHER	Nos.	1	
18	WATER TANKER	Nos.	1	
19	LOADER	Nos.	1	

4-L of NH 37 from design Ch 0+000 on NH-8 near Karimganj to design Chainage 14+250 near Sutarkandi (Spur Connectivity to Indo/Bangladesh Border) Silchar-Churaibari Pkg-7 in the State of Assam on HAM mode.

CHAPTER-8

DESIGN AND DRAWING

The project highway has been designed for four lane divided carriageway facility with provision of central raised median of 1.6m. The Concession Agreement envisages design of the project highway by the Concessionaire. The scope of design includes the design for road works, structure works and other project facilities. The drawings need to be prepared and approved for execution of each component of the project highway.

8.1 Design

The design of road works e.g., plans and profiles, cross sections and other miscellaneous items are being prepared by the Concessionaire for approval and execution of works accordingly. Similarly, the design of various structures e.g., Major bridge, Minor bridges, Vehicular Underpasses, Box Culverts, Hume Pipe Culverts etc. are also being prepared by the Concessionaire for review by Authority/ IE.

8.2 Drawings

As per requirement of the Contract Agreement various drawings are being prepared for execution and completion of the works. The working drawings of road works and structure works are being prepared by the Concessionaire and submitted to the Authority/ Independent Engineer prior to execution of works at site.

8.3 Status of Approval of Drawings

The status of drawing submission and approval of GAD for road and structure works as on June-30, 2025, is enclosed in this chapter of the report.

Road Works

S N	Description	Unit	Total	Submitted	Approval	Review Balance	Remarks
1.	Plan & Profile MCW	Km	14.360	14.360	0.000	14.360	
2.	Plan & Profile SR	Km	4.164	4.164	0.000	4.164	
3.	Typical Cross Section	Nos	1.00	1.00	0.00	1.00	
4.	Pavement Design Report	Nos	1.00	1.00	0.00	1.00	
5.	RE Wall	Nos	20820.00	-	-	-	
6.	Major Junction	Nos	2.00	-	-	-	
7.	Minor Junction	Nos	4.00	-	-	-	
8.	Bus Bay Drawing	Nos	2.00	-	-	-	
9.	Road Signage Plan	Km	14.360	-	-	-	

4-L of NH 37 from design Ch 0+000 on NH-8 near Karimganj to design Chainage 14+250 near Sutarkandi (Spur Connectivity to Indo/Bangladesh Border) Silchar-Churaibari Pkg-7 in the State of Assam on HAM mode.

Structure Works:-

Structure			
Description	Total Nos	Submitted	Approved
Box Underpass	4	4	4
SVUP	1	0	0
LVUP	9	8	8
VUP	2	0	0
MNB	8	5	0
MJB	3	0	0
ROB	1	0	0
Box Culvert	32	25	0
Pipe Culvert	20	0	0

4-L of NH 37 from design Ch 0+000 on NH-8 near Karimganj to design Chainage 14+250 near Sutarkandi (Spur Connectivity to Indo/Bangladesh Border) Silchar-Churaibari Pkg-7 in the State of Assam on HAM mode.

CHAPTER-9
PROJECT WORK PROGRESS

9.1 Work Progress:

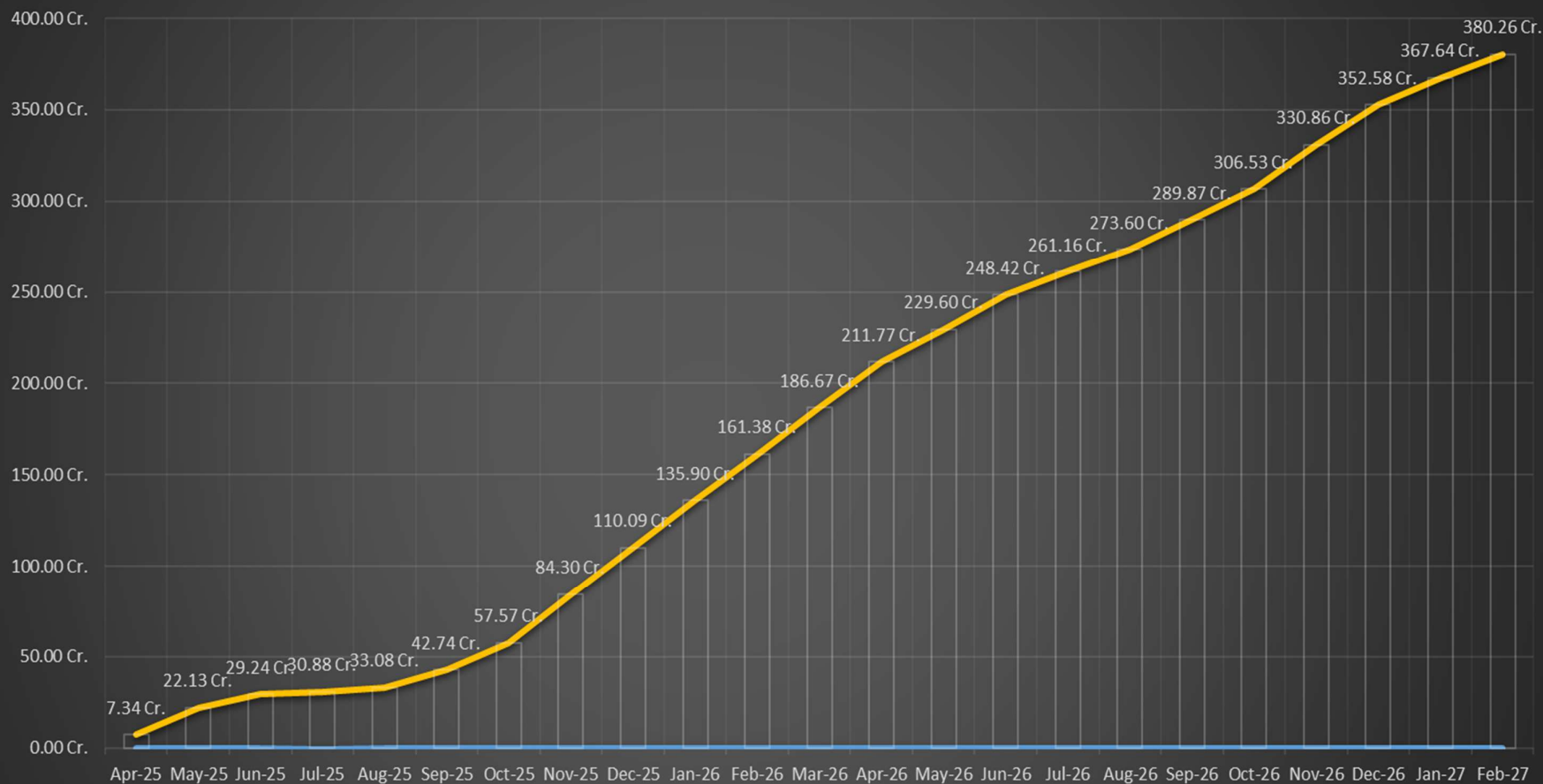
Progress as per Schedule G for the month June-2025.

Item	Stage for measurement of Physical Progress	Unit	Qty.	Unit Rate	Weightage in percentage to the contract price	Qty.	Physical Progress(%)	Value of Physical Progress(%)
Road works including culverts, minor bridges, underpasses, overpasses, approaches to ROB/RUB/ Major Bridge/s/ Structures (but excluding service roads)	B- New 4 Lane Realignment/Bypass							
	(1) Earthwork upto top of Sub-grade	L-Km	27.23	2,73,56,380.00	19.59%	0.13	0.46%	0.090%
	(2) Granular work (Sub-base, base, shoulder)							
	(a) GSB	L-Km	27.23	70,31,715.11	5.04%	-	0.00%	0.000%
	(b) WMM	L-Km	24.27	46,47,683.33	2.97%	-	0.00%	0.000%
	(4) Bituminous Work							
	(a) DBM	L-Km	24.274	32,77,494.45	2.09%	-	0.00%	0.000%
	(b) BC	L-Km	24.27	27,93,527.84	1.78%	-	0.00%	0.000%
	(5) Rigid Pavement (MCW)							
	(a) DLC	L-Km	2.96	49,44,591.26	0.38%	-	0.00%	0.000%
	(b) PQC	L-Km	2.96	1,86,09,529.62	1.45%	-	0.00%	0.000%
	Sub Total-B							
	C- New Culverts, Minor Bridges, underpasses, overpasses on existing road, realignment, bypasses:							
	1) Culverts	No.	72.00	29,15,688.30	5.52%	5.00	6.94%	0.383%
	2) Minor Bridge							
	a) Foundation	No.	8.00	1,42,40,090.95	3.00%	-	0.00%	0.000%
	b) Sub-Structure	No.	8.00	65,61,027.39	1.38%	-	0.00%	0.000%
	c) Super-Structure (including Crash Barrier etc. Complete)							
	i) Girder Type - Precast Girder (40%)	No.	3.00	51,53,385.40	0.41%	-	0.00%	0.000%
	ii) Girder Type - Cast in situ superstructure (60%)	No.	3.00	77,30,078.11	0.61%	-	0.00%	0.000%
	iii) Box Type - Cast-in-situ superstructure	No.	5.00	66,02,830.38	0.87%	-	0.00%	0.000%
	5) Grade Separated Structures							
	a) Underpasses (Box Underpass, SVUP, LVUP, VUP)							
	i) Foundation	No.	16.00	84,44,719.26	3.55%	2.00	12.50%	0.444%
	ii) Sub-Structure	No.	16.00	53,62,333.36	2.26%	-	0.00%	0.000%
	iii) Super-Structure (including Crash Barrier etc. Complete)							
	- Girder Type - Precast Girder (40%)	No.	3.00	25,24,569.58	0.20%	-	0.00%	0.000%
	- Girder Type - Cast in situ superstructure (60%)	No.	3.00	37,86,854.37	0.30%	-	0.00%	0.000%
	- Box Type - Cast-in-situ superstructure	No.	13.00	56,82,200.18	1.94%	-	0.00%	0.000%
Major Bridge works and ROB/RUB	C- New Major Bridges							
	(1) Foundation (Pile Foundation)	No.	3.00	8,24,50,170.32	6.50%	-	0.00%	0.000%
	(2) Sub-structure	No.	3.00	2,23,79,053.39	1.77%	-	0.00%	0.000%
	(3) Super-structure (including crash barriers etc. complete)							
	- Super-structure - Precast Girder (40%)	No.	3.00	1,54,01,955.77	1.22%	-	0.00%	0.000%
	- Super-structure - Cast in situ superstructure (60%)	No.	3.00	2,31,02,933.65	1.82%	-	0.00%	0.000%
	D- New rail-road bridges							
	(a) ROB							
	(1) Foundation	No.	1.00	10,41,59,258.66	2.74%	-	0.00%	0.000%
	(2) Sub-structure	No.	1.00	4,29,50,672.00	1.13%	-	0.00%	0.000%
Structures (Elevated Section, Reinforced earth)	(3) Super-structure (including crash barriers etc. complete)							
	- Super-structure - Precast Girder (40%)	No.	1.00	3,74,42,687.41	0.98%	-	0.00%	0.000%
	- Super-structure - Cast in situ superstructure (60%)	No.	1.00	5,61,64,031.11	1.48%	-	0.00%	0.000%
	4) Reinforced Earth Wall (includes Approaches of ROB, Underpasses, Over passes, Flyover etc.)							
	i) On Casting (5%)	Sq.m	24,984.00	55.79	0.04%	-	0.00%	0.000%
	ii) On Erection (95%)	Sq.m	24,984.00	1,060.02	0.70%	-	0.00%	0.000%
Electrical and Public Health Utilities	UTILITY SHIFTING							
	HT/LT lines (including Transformers if any)	Km	4.36	3,23,916.23	0.04%	1.10	25.23%	0.009%
	HT/LT crossings	No.	65.00	5,82,449.97	1.00%	18.00	27.69%	0.276%
	Water pipeline	Km	4.65	13,43,795.29	0.16%	-	0.00%	0.000%
	Water pipeline crossings	No.	14.00	9,83,584.85	0.36%	-	0.00%	0.000%
Other Works	OTHER WORKS							
	i) Service Road / Slip Road	Km	4.16	2,00,43,319.11	2.19%	-	0.00%	0.000%
	iii) Road Side Drain							
	a) Line Drain/RCC Cover Drain	L-Km	2.96	61,98,965.97	0.48%	-	0.00%	0.000%
	b) Unlined Drain	L-Km	22.37	1,10,492.59	0.06%	-	0.00%	0.000%
	c) Chute Drain	L-Km	5.22	3,42,979.83	0.05%	-	0.00%	0.000%
	d) Median Drain	Km	5.18	9,88,500.81	0.13%	-	0.00%	0.000%
	iv) - Road signs, markings, Km Stone, Safety devices							
	(a) Road signs, markings, Km Stone	L-Km	14.36	8,88,854.64	0.34%	-	0.00%	0.000%
	(b) Concrete Crash Barrier/W Beam Crash Barrier in Road work							
	- Concrete Crash Barrier	Km	13.30	36,26,999.19	1.27%	-	0.00%	0.000%
	- W Beam Crash Barrier	Km	17.60	28,91,448.08	1.34%	-	0.00%	0.000%
	v) - Project Facilities							
	(a) Bus bay	No.	2.00	8,32,071.39	0.04%	-	0.00%	0.000%
	(b) Rain Water Harvesting	No.	28.00	2,49,673.84	0.18%	-	0.00%	0.000%
	viii) Protection Work							
	(a) Boulder Pitching on Slopes	Km	6.66	3,82,18,144.79	6.69%	-	0.00%	0.000%
	(b) Toe Wall / Retaining Wall	Km	13.81	3,33,48,062.56	12.11%	-	0.00%	0.000%
	x) Miscellaneous							
	(a) Street Lighting	No.	280.00	15,245.15	0.11%	-	0.00%	0.000%
	(b) Junction/Interchange	No.	6.00	14,44,520.86	0.23%	-	0.00%	0.000%
	(c) Boundary Wall	L-Km	27.23	12,48,107.08	0.89%	-	0.00%	0.000%
	(d) ATMS	L-Km	28.72	7,94,537.07	0.60%	-	0.00%	0.000%
Grand Total :-					100.00%			1.20%

4-L of NH 37 from design Ch 0+000 on NH-8 near Karimganj to design Chainage 14+250 near Sutarkandi (Spur Connectivity to Indo/Bangladesh Border) Silchar-Churaibari Pkg-7 in the State of Assam on HAM mode.

9.2 S Curve

S Curve

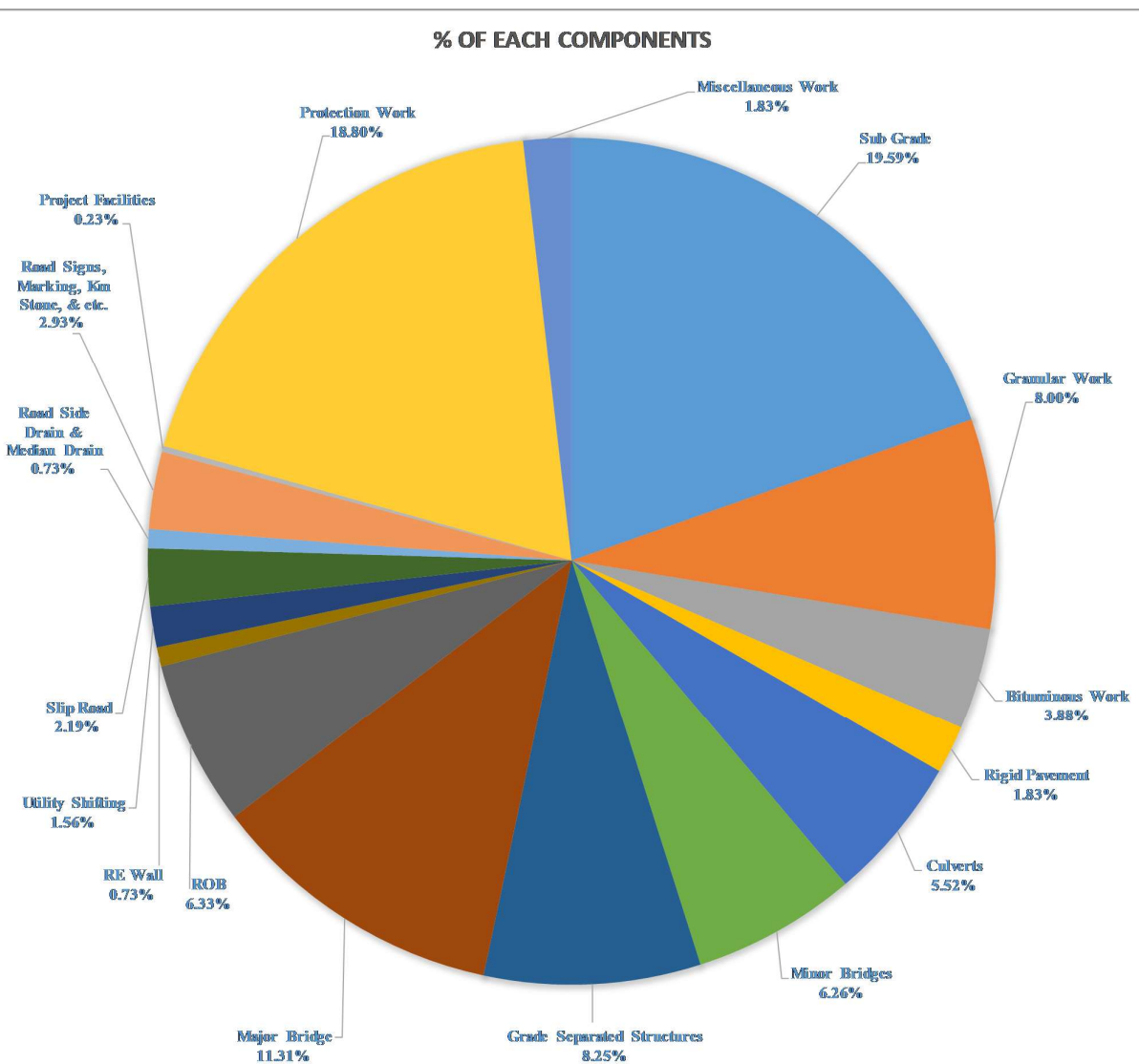


	Apr-25	May-25	Jun-25	Jul-25	Aug-25	Sep-25	Oct-25	Nov-25	Dec-25	Jan-26	Feb-26	Mar-26	Apr-26	May-26	Jun-26	Jul-26	Aug-26	Sep-26	Oct-26	Nov-26	Dec-26	Jan-27	Feb-27
Plan in %	1.93%	3.89%	1.87%	0.43%	0.58%	2.54%	3.90%	7.03%	6.78%	6.79%	6.70%	6.65%	6.60%	4.69%	4.95%	3.35%	3.27%	4.28%	4.38%	6.40%	5.71%	3.96%	3.32%
Cumulative Amount	7.34 Cr	22.13 Cr	29.24 Cr	30.88 Cr	33.08 Cr	42.74 Cr	57.57 Cr	84.30 Cr	110.09 Cr	135.90 Cr	161.38 Cr	186.67 Cr	211.77 Cr	229.60 Cr	248.42 Cr	261.16 Cr	273.60 Cr	289.87 Cr	306.53 Cr	330.86 Cr	352.58 Cr	367.64 Cr	380.26 Cr

4-L of NH 37 from design Ch 0+000 on NH-8 near Karimganj to design Chainage 14+250 near Sutarkandi (Spur Connectivity to Indo/Bangladesh Border) Silchar-Churaibari Pkg-7 in the State of Assam on HAM mode.

9.3 Weightages

Work Description	% of Each sub components	Amount (Cr.)
Sub Grade	19.59%	74,50,23,653.02
Granular Work	8.00%	30,43,19,594.30
Bituminous Work	3.88%	14,73,67,994.90
Rigid Pavement	1.83%	6,97,20,197.81
Culverts	5.52%	20,99,29,557.88
Minor Bridges	6.26%	23,80,73,489.15
Grade Separated Structures	8.25%	31,37,15,716.05
Major Bridge	11.31%	43,00,02,339.39
ROB	6.33%	24,07,16,649.18
RE Wall	0.73%	2,78,77,340.41
Utility Shifting	1.56%	5,92,90,359.01
Slip Road	2.19%	8,34,60,380.79
Road Side Drain & Median Drain	0.73%	2,77,26,745.67
Road Signs, Marking, Km Stone, & etc.	2.94%	11,19,05,564.92
Project Facilities	0.23%	86,55,010.23
Protection Work	18.80%	71,50,69,588.19
Miscellaneous Work	1.83%	6,97,45,819.09
Total	100.00%	3,80,26,00,000.00



4-L of NH 37 from design Ch 0+000 on NH-8 near Karimganj to design Chainage 14+250 near Sutarkandi (Spur Connectivity to Indo/Bangladesh Border) Silchar-Churaibari Pkg-7 in the State of Assam on HAM mode.

9.4 Highway Progress:

Sr. No	Work Description	Unit	Scope	Physical Progress	Physical Progress in %	Remarks
1.	C&G	L-Km	27.23	5.410	19.87%	
2.	Earthwork upto top of Sub-grade	L-Km	27.23	0.125	0.46%	

9.5 Detailed Structure Work Progress

9.5.1 Status of Box Culvert

Sr. No	Work Description	Unit	Scope	Physical Progress	Physical Progress in %	Remarks
1.	Culverts	No.	72	5	14.40%	

9.5.2 Status of Minor Bridge

Sr. No	Work Description	Unit	Scope	Physical Progress	Physical Progress in %	Remarks
1.	Foundation	No.	8			
2.	Sub-Structure	No.	8			
3.	Super-Structure (including Crash Barrier etc. Complete)					
i.	Girder Type - Precast Girder (40%)	No.	3			
ii.	Girder Type - Cast in situ superstructure (60%)	No.	3			
iii.	Box Type - Cast-in-situ superstructure	No.	5			

9.5.3 Status of Major Bridge

Sr. No	Work Description	Unit	Scope	Physical Progress	Physical Progress in %	Remarks
1.	Foundation (Pile Foundation)	No.	3			
2.	Sub-Structure	No.	3			
3.	Super-Structure (including Crash Barrier etc. Complete)					

4-L of NH 37 from design Ch 0+000 on NH-8 near Karimganj to design Chainage 14+250 near Sutarkandi (Spur Connectivity to Indo/Bangladesh Border) Silchar-Churaibari Pkg-7 in the State of Assam on HAM mode.

i.	Girder Type - Precast Girder (40%)	No.	3			
ii.	Girder Type - Cast in situ superstructure (60%)	No.	3			

9.5.4 Status of ROB

Sr. No	Work Description	Unit	Scope	Physical Progress	Physical Progress in %	Remarks
1.	Foundation (Pile Foundation)	No.	1			
2.	Sub-Structure	No.	1			
3.	Super-Structure (including Crash Barrier etc. Complete)					
i.	Girder Type - Precast Girder (40%)	No.	1			
ii.	Girder Type - Cast in situ superstructure (60%)	No.	1			

9.5.5 Status of Underpass

Sr. No	Work Description	Unit	Scope	Physical Progress	Physical Progress in %	Remarks
1.	Foundation	No.	16	2	12.5%	
2.	Sub-Structure	No.	16			
3.	Super-Structure (including Crash Barrier etc. Complete)					
i.	Girder Type - Precast Girder (40%)	No.	3			
ii.	Girder Type - Cast in situ superstructure (60%)	No.	3			
iii.	Box Type - Cast-in-situ superstructure	No.	13			

CHAPTER-10

QUALITY CONTROL AND MATERIAL

10.1 Quality Control

The execution of works is mainly governed by the specified Technical Specifications for the project. The quality control of the works is required to be monitored on daily basis both at site and in the laboratory. Standard formats have been devised to control the required quality of the works. The Concessionaire Engineers are monitoring the required quality control works and maintaining the records accordingly for each item of works being executed.

10.2 Site Laboratory

The Site Laboratory is established at Base Camp located at CH: -5+600. All the required material tests are being conducted in the laboratory for the project road.

10.3 Materials Testing & Third Party Test

The testing to be carried out in the site laboratory includes tests of soil, aggregates, cement, steel, sand, embankment fill, sub grade, granular subbase and cement concrete. The details of test conducted up to 30 June, 2025 are enclosed.

10.3.1 Soil and Aggregates

The test reports for borrow area earth for available borrow area are approved & test reports for Aggregates are also approved for the available Quarry. Test reports for new borrow area earth are submitted to IE for approval.

10.3.2 Cement

The Concessionaire is using approved sources of Cement as , Dalmia Cement (OPC 53 Grade), Star Cement (OPC 53 Grade) and Max Cement (OPC 53 Grade) for the project work.

10.3.3 Reinforcement Steel

The Concessionaire is using approved sources of TMT from M/s Rashmi Metaliks Limited, M/s Shyam Steel Industries limited, M/s SRMB Srijan Private Limited and Elegant steel.

4-L of NH 37 from design Ch 0+000 on NH-8 near Karimganj to design Chainage 14+250 near Sutarkandi (Spur Connectivity to Indo/Bangladesh Border) Silchar-Churaibari Pkg-7 in the State of Assam on HAM mode.

10.3.4 Status of materials source approval & Mix Design

Cement				
Sr. No.	Brand Name	Letter No.	Status	IE Letter No.
1.	Black Tiger Cement	MKCIL/ASSAM/PKG-07/106 dt. 24.03.2025		
2.	Dalmia Cement	MKCIL/ASSAM/PKG-07/107 dt. 24.03.2025	Principle Approved	TASPL-MAV/NH-37/MKCIL/2025/MAY/34
3.	Max Cement	MKCIL/ASSAM/PKG-07/108 dt. 24.03.2025		
4.	Star Cement	MKCIL/ASSAM/PKG-07/109 dt. 24.03.2025		
5.	Amrit Cement	MKCIL/ASSAM/PKG-07/110 dt. 24.03.2025		

Reinforcement Steel				
Sr. No.	Brand Name	Letter No.	Status	IE Letter No.
1.	Rashmi Metaliks Limited	MKCIL/ASSAM/PKG-07/111 dt. 24.03.2025	Principle Approved	TASPL-MAV/NH-37/MKCIL/2025/MAY/27
2.	Shyam Steel industries Ltd.	MKCIL/ASSAM/PKG-07/112 dt. 24.03.2025	Principle Approved	TASPL-MAV/NH-37/MKCIL/2025/MAY/26
3.	SRMB Srijan Pvt. Ltd.	MKCIL/ASSAM/PKG-07/113 dt. 24.03.2025	Principle Approved	TASPL-MAV/NH-37/MKCIL/2025/MAY/32
4.	Shyam Metalics & Energy Ltd.	MKCIL/ASSAM/PKG-07/132 dt. 04.04.2025		

Admixture				
Sr. No.	Brand Name	Letter No.	Status	IE Letter No.
1.	Berger Paints Pvt. Ltd.	MKCIL/ASSAM/PKG-07/101 dt. 24.03.2025		
2.	CHRYSO India Pvt. Ltd	MKCIL/ASSAM/PKG-07/102 dt. 24.03.2025		
3.	CICO Technologies Ltd.	MKCIL/ASSAM/PKG-07/103 dt. 24.03.2025		
4.	FOSROC Chemicals (India) Ltd.	MKCIL/ASSAM/PKG-07/104 dt. 24.03.2025		
5.	Vista Chemtech Pvt. Ltd.	MKCIL/ASSAM/PKG-07/105 dt. 24.03.2025		

4-L of NH 37 from design Ch 0+000 on NH-8 near Karimganj to design Chainage 14+250 near Sutarkandi (Spur Connectivity to Indo/Bangladesh Border) Silchar-Churaibari Pkg-7 in the State of Assam on HAM mode.

Monthly Laboratory Report

Summary of Quality Control Test For The Month of JUNE-2025																	
Sr.No.	Name of test	Reference as per IS/ MoRT&H	Frequency of Tests	Total Tests Conducted upto Previous Month			No. of Tsts Conducted during this Month			No. of Tests Conducted upto this Month			No. of Tests Cchecked by IE			% Checked by IE	Remarks
				Tested	Passed	Failed	Tested	Passed	Failed	Tested	Passed	Failed	Tested	Passed	Failed		
LAB & FIELD TEST'S																	
(I). OGL Samples		IRC:36-2010															
1.1	Free Swelling Index (FSI)	IS : 2720 (P-40)	1 Test / Every 500 m Interval's	32	32	0	0	0	0	32	32	0	0	0	0	0.00	
1.2	Grain size analysis	IS : 2720 (P-4)	1 Test / Every 500 m Interval's	32	32	0	0	0	0	32	32	0	0	0	0	0.00	
1.3	Liquid limits (LL)	IS : 2720 (P-5)	1 Test / Every 500 m Interval's	32	32	0	0	0	0	32	32	0	0	0	0	0.00	
1.4	Plasticity Index (PI)	IS : 2720 (P-5)	1 Test / Every 500 m Interval's	32	32	0	0	0	0	32	32	0	0	0	0	0.00	
1.5	Proctor test (MDD & OMC)	IS : 2720 (P-8)	1 Test / Every 500 m Interval's	32	32	0	0	0	0	32	32	0	0	0	0	0.00	
1.6	California Bearing Ratio Test (CBR)	IS : 2720 (P-16)	As Required	0	0	0	0	0	0	0	0	0	0	0	0	0.00	
1.7	Field Compaction Test (OGL)	IS : 2720 (P-28)	1 Set / 3000 Sqm. (1Set = 10 Pit's)	322	309	13	0	0	0	322	309	13	0	0	0	0.00	
(II). Borrow area Samples (EMB/SG)		MoRT&H (Clause-305)															
2.1	Free Swelling Index (FSI)	IS : 2720 (P-40)	2 Test's / 3000 Cum.	36	36	0	0	0	0	36	36	0	0	0	0	0.00	
2.2	Grain size analysis (GSA)	IS : 2720 (P-4)	2 Test's / 3000 Cum.	36	36	0	0	0	0	36	36	0	0	0	0	0.00	
2.3	Liquid limits (LL)	IS : 2720 (P-5)	2 Test's / 3000 Cum.	36	36	0	0	0	0	36	36	0	0	0	0	0.00	
2.4	Plasticity Index (PI)	IS : 2720 (P-5)	2 Test's / 3000 Cum.	36	36	0	0	0	0	36	36	0	0	0	0	0.00	
2.5	Proctor test (MDD & OMC)	IS : 2720 (P-8)	2 Test's / 3000 Cum.	36	36	0	0	0	0	36	36	0	0	0	0	0.00	
2.6	California Bearing Ratio Test (CBR)	IS : 2720 (P-16)	1 Test's / 3000 Cum.	18	18	0	0	0	0	18	18	0	0	0	0	0.00	
2.7	Field Compaction Test (Emb)	IS : 2720 (P-28)	1 Set / 3000 Sqm. (1Set = 10 Pit's)	293	272	21	0	0	0	293	272	21	0	0	0	0.00	
2.8	Field Compaction Test (Subgrade)	IS : 2720 (P-28)	1 Set / 2000 Sqm. (1Set = 10 Pit's)	0	0	0	0	0	0	0	0	0	0	0	0	0.00	
(III). Course Agg. for Concrete Work's		MoRT&H Table -900-6															
4.1	Gradation of Coarse Aggregate	IS : 2386 (P-1)	1 Test / Every day's work	48	31	17	24	24	0	72	55	17	3	3	0	12.50	
4.2	Flakiness Index (FI)	IS : 2386 (P-1)	1 Test for source / Weekly	13	9	4	5	5	0	18	14	4	1	1	0	20.00	
4.3	Aggregate Impact Value (A.I.V)	IS : 2386 (P-4)	1 Test for source / Weekly	13	9	4	5	5	0	18	14	4	1	0	0	20.00	
4.4	Specific Gravity	IS : 2386 (P-3)	1 Test / Source	3	3	0	0	0	0	3	3	0	0	0	0	0.00	
4.5	Water Absorption	IS : 2386 (P-3)	1 Test / Source	3	3	0	0	0	0	3	3	0	0	0	0	0.00	
4.6	Deleterious Constituents	IS : 2386 (P-2)	1 Test / As Required	0	0	0	0	0	0	0	0	0	0	0	0	0.00	
4.7	Moisture correction	IS : 2386 (P-3)	1 Test / Day	20	20	0	24	24	0	44	44	0	3	3	0	12.50	
4.8	Soundness	IS : 2386 (P-5)	1 Test / Source	0	0	0	0	0	0	0	0	0	0	0	0	0.00	
4.9	Alkali Aggregate Reactivity	IS : 2386 (P-7)	1 Test / Source	0	0	0	0	0	0	0	0	0	0	0	0	0.00	
(IV). Fine Agg. for Concrete		MoRT&H Table -900-6															
5.1	Gradation	IS : 383	1 Test / Every day's work	26	26	0	24	24	0	50	50	0	3	3	0.0	12.50	
5.2	Specific Gravity	IS : 2386 (P-3)	1 Test / Source	3	3	0	0	0	0	3	3	0	0	0	0	0.0	0.00
5.3	Water Absorption	IS : 2720 (P-3)	1 Test / Source	3	3	0	0	0	0	3	3	0	0	0	0	0.0	0.00
5.4	Silt Content	IS : 383	1 Test / Weekly	9	9	0	5	5	0	14	14	0	1	1	0.0	20.00	
5.5	Moisture correction	IS : 2386 (P-3)	1 Test / Every day's work	20	20	0	24	24	0	44	44	0	3	3	0.0	12.50	
(V). Concrete Cube's Compressive Strength Test		IS: 516															
▲ Grade of Concrete : M-10 PCC																	
6.1	for 7 days	IS : 516	As per Frequency MoRT&H Table 1700-09	9	9	0	4	4	0	13	13	0	0	0	0	0.00	
6.2	for 28 days	IS : 516	As per Frequency MoRT&H Table 1700-09	14	14	0	10	10	0	24	24	0	0	0	0	0.00	
▲ Grade of Concrete : M-15 PCC																	
6.3	for 7 days	IS : 516	As per Frequency MoRT&H Table 1700-09	0	0	0	0	0	0	0	0	0	0	0	0	0.00	
6.4	for 28 days	IS : 516	As per Frequency MoRT&H Table 1700-09	0	0	0	0	0	0	0	0	0	0	0	0	0.00	
▲ Grade of Concrete : M-20 PCC																	
6.5	for 7 days	IS : 516	As per Frequency MoRT&H Table 1700-09	0	0	0	0	0	0	0	0	0	0	0	0	0.00	
6.6	for 28 days	IS : 516	As per Frequency MoRT&H Table 1700-09	0	0	0	0	0	0	0	0	0	0	0	0	0.00	
▲ Grade of Concrete : M-20 RCC																	
6.7	for 7 days	IS : 516	As per Frequency MoRT&H Table 1700-09	0	0	0	0	0	0	0	0	0	0	0	0	0.00	
6.8	for 28 days	IS : 516	As per Frequency MoRT&H Table 1700-09	0	0	0	0	0	0	0	0	0	0	0	0	0.00	
▲ Grade of Concrete : M-20 for KERB																	
6.9	for 7 days	IS : 516	As per Frequency MoRT&H Table 1700-09	0	0	0	0	0	0	0	0	0	0	0	0	0.00	
6.1	for 28 days	IS : 516	As per Frequency MoRT&H Table 1700-09	0	0	0	0	0	0	0	0	0	0	0	0	0.00	
▲ Grade of Concrete : M-25 RCC																	
6.11	for 7 days	IS : 516	As per Frequency MoRT&H Table 1700-09	0	0	0	0	0	0	0	0	0	0	0	0	0.00	
6.12	for 28 days	IS : 516	As per Frequency MoRT&H Table 1700-09	0	0	0	0	0	0	0	0	0	0	0	0	0.00	
▲ Grade of Concrete : M-30 RCC																	
6.13	for 7 days	IS : 516	As per Frequency MoRT&H Table 1700-09	17	17	0	22	22	0	39	39	0	3	3	0	13.64	
6.14	for 28 days	IS : 516	As per Frequency MoRT&H Table 1700-09	34	34	0	37	37	0	71	71	0	6	6	0	16.22	
▲ Grade of Concrete : M-35 RCC																	
6.15	for 7 days	IS : 516	As per Frequency MoRT&H Table 1700-09	1	1	0	4	4	0	5	5	0	0	0	0	0.00	
6.16	for 28 days	IS : 516	As per Frequency MoRT&H Table 1700-09	3	3	0	9	9	0	12	12	0	0	0	0	0.00	
▲ Grade of Concrete : M-35 Pile																	
6.17	for 7 days	IS : 516	As per Frequency MoRT&H Table 1700-09	0	0	0	0	0	0	0	0	0	0	0	0	0.00	
6.18	for 28 days	IS : 516	As per Frequency MoRT&H Table 1700-09	0	0	0	0	0	0	0	0	0	0	0	0	0.00	
▲ Grade of Concrete : M-35 RE BLOCK																	

4-L of NH 37 from design Ch 0+000 on NH-8 near Karimganj to design Chainage 14+250 near Sutarkandi (Spur Connectivity to Indo/Bangladesh Border) Silchar-Churaibari Pkg-7 in the State of Assam on HAM mode.

6.19	for 7 days	IS: 516	As per Frequency MoRT&H Table 1700-09	0	0	0	0	0	0	0	0	0	0	0	0	0.00
6.2	for 28 days	IS: 516	As per Frequency MoRT&H Table 1700-09	0	0	0	0	0	0	0	0	0	0	0	0	0.00
♣ Grade of Concrete : M-40 RCC																
6.21	for 7 days	IS: 516	As per Frequency MoRT&H Table 1700-09	0	0	0	0	0	0	0	0	0	0	0	0	0.00
6.22	for 28 days	IS: 516	As per Frequency MoRT&H Table 1700-09	0	0	0	0	0	0	0	0	0	0	0	0	0.00
♣ Grade of Concrete : M-45 RCC/PSC																
6.23	for 7 days	IS: 516	As per Frequency MoRT&H Table 1700-09	0	0	0	0	0	0	0	0	0	0	0	0	0.00
6.24	for 28 days	IS: 516	As per Frequency MoRT&H Table 1700-09	0	0	0	0	0	0	0	0	0	0	0	0	0.00
♣ Grouting of PSC Girders																
6.25	for 7 days	IS: 516	As per Frequency MoRT&H	0	0	0	0	0	0	0	0	0	0	0	0	0.00
6.26	for 28 days	IS: 516	As per Frequency MoRT&H	0	0	0	0	0	0	0	0	0	0	0	0	0.00
(VI). Cement tests																
7.1	Fineness of Cement	IS: 4031 (P-1)	1 Test Every Batch of Cement	2	2	0	1	1	0	3	3	0	0	0	0	0.00
7.2	Normal Consistency	IS: 4031 (P-4)	1 Test Every Batch of Cement	2	2	0	1	1	0	3	3	0	0	0	0	0.00
7.3	Initial Setting Time	IS: 4031 (P-5)	1 Test Every Batch of Cement	2	2	0	1	1	0	3	3	0	0	0	0	0.00
7.4	Final Setting time	IS: 4031 (P-5)	1 Test Every Batch of Cement	2	2	0	1	1	0	3	3	0	0	0	0	0.00
7.5	Compressive Strength (03 Days)	IS: 516	1 Test Every Batch of Cement	3	3	0	0	0	0	3	3	0	0	0	0	0.00
7.6	Compressive Strength (07 Days)	IS: 516	1 Test Every Batch of Cement	2	2	0	0	0	0	2	2	0	0	0	0	0.00
7.7	Compressive Strength (28 Days)	IS: 516	1 Test Every Batch of Cement	2	2	0	0	0	0	2	2	0	0	0	0	0.00
7.8	Soundness	IS: 4031 (P-3)	1 Test Every Batch of Cement	0	0	0	0	0	0	0	0	0	0	0	0	0.0
7.9	Specific Gravity	IS: 4031 (P-11)	1 Test Every Batch of Cement	0	0	0	0	0	0	0	0	0	0	0	0	0.0
(VII). Granular Sub-Base (GSB)				MoRT&H Clause - 401												
8.1	Gradation	Table 400-2	1 Test /400 Cum.	0	0	0	0	0	0	0	0	0	0	0	0	0.00
8.2	Liquid limits (LL)	IS: 2720 (P-5)	1 Test /400 Cum.	0	0	0	0	0	0	0	0	0	0	0	0	0.00
8.3	Plasticity Index (PI)	IS: 2720 (P-5)	1 Test /400 Cum.	0	0	0	0	0	0	0	0	0	0	0	0	0.00
8.4	Moisture Prior to Compaction Test	IS: 2720 (P-2)	1 Test /400 Cum.	0	0	0	0	0	0	0	0	0	0	0	0	0.00
8.5	Proctor test (MDD & OMC)	IS: 2720 (P-8)	1 Test Per Source / As Required	0	0	0	0	0	0	0	0	0	0	0	0	0.00
8.6	California Bearing Ratio Test (CBR)	IS: 2720 (P-16)	1 Test Per Source / As Required	0	0	0	0	0	0	0	0	0	0	0	0	0.00
8.7	Water Absorption	IS: 2720 (P-3)	1 Test Per Source / As Required	0	0	0	0	0	0	0	0	0	0	0	0	0.00
8.8	Aggregate Impact Value (AIV)	IS: 2386 (P-4)	As Required	0	0	0	0	0	0	0	0	0	0	0	0	0.00
8.9	Field Compaction Test (GSR)	IS: 2720 (P-28)	1 Set / 1000 Sqm. (1Set = 3 Pit's)	0	0	0	0	0	0	0	0	0	0	0	0	0.00
(VIII). Cement Treated Sub Base (CTSB)				MoRT&H Clause - 403 & IRC-37: 2018												
9.1	Gradation	MoRT&H Table 400-4	1 Test 400 Cum.	0	0	0	0	0	0	0	0	0	0	0	0	0.00
9.2	Liquid limits (LL)	IS: 2720 (P-5)	1 Test 400 Cum.	0	0	0	0	0	0	0	0	0	0	0	0	0.00
9.3	Plasticity Index (PI)	IS: 2720 (P-5)	1 Test 400 Cum.	0	0	0	0	0	0	0	0	0	0	0	0	0.00
9.4	Proctor test (MDD & OMC)	IS: 2720 (P-8)	As Required	0	0	0	0	0	0	0	0	0	0	0	0	0.00
9.5	Unconfined Compressive Strength (UCS)	IS: 516	3 Specimens each 400 ton/ Minimum 2 tests per day	0	0	0	0	0	0	0	0	0	0	0	0	0.00
9.6	Cement Content	IS: 516	3 Specimens each 400 ton/ Minimum 2 tests per day	0	0	0	0	0	0	0	0	0	0	0	0	0.00
9.7	Flexural Strength	IS: 516	3 Specimens each 400 ton/ Minimum 2 tests per day	0	0	0	0	0	0	0	0	0	0	0	0	0.00
9.8	Soundness Test	BIS: 4332 (P-4)	As Required	0	0	0	0	0	0	0	0	0	0	0	0	0.00
9.9	Field Compaction Test (CTSB)	IS: 2720 (P-28)	2 Test's 500 Sqm.	0	0	0	0	0	0	0	0	0	0	0	0	0.00
(IX). Cement Treated Base (CTB)				MoRT&H Clause - 403 & IRC-37: 2018												
10.1	Gradation	MoRT&H Table 400-4	1 Test 400 Cum.	0	0	0	0	0	0	0	0	0	0	0	0	0.00
10.2	Proctor test (MDD & OMC)	IS: 2720 (P-8)	As Required	0	0	0	0	0	0	0	0	0	0	0	0	0.00
10.3	Unconfined Compressive Strength (UCS)	IS: 516	3 Specimens each 400 ton/ Minimum 2 tests per day	0	0	0	0	0	0	0	0	0	0	0	0	0.00
10.4	Cement Content	IS: 516	3 Specimens each 400 ton/ Minimum 2 Tests per day	0	0	0	0	0	0	0	0	0	0	0	0	0.00
10.5	Flexural Strength	IS: 516	3 Specimens each 400 ton/ Minimum 2 Tests per day	0	0	0	0	0	0	0	0	0	0	0	0	0.00
10.6	Soundness Test	BIS: 4332 (P-4)	As Required	0	0	0	0	0	0	0	0	0	0	0	0	0.00
10.7	Field Compaction Test (CTSB)	IS: 2720 (P-28)	2 Test's 500 Sqm.	0	0	0	0	0	0	0	0	0	0	0	0	0.00
(X). Wet Mix Macadam (WMM)				MoRT&H-406												
11.1	Gradation	Table 400-13	1 Test /200 Cum.	0	0	0	0	0	0	0	0	0	0	0	0	0.00
11.2	Atterberg limits (LL & PI)	IS: 2720 (P-5)	1 Test /200 Cum.	0	0	0	0	0	0	0	0	0	0	0	0	0.00
11.3	Proctor test (MDD Vs OMC)	IS: 2720 (P-8)	As Required	0	0	0	0	0	0	0	0	0	0	0	0	0.00
11.4	Aggregate Impact Value (AIV)	IS: 2386 (P-4)	1 Test/ 1000 Cum	0	0	0	0	0	0	0	0	0	0	0	0	0.00
11.5	Combined Flakiness & Elongation (FI & EL)	IS: 2386 (P-1)	1 Test /500 Cum	0	0	0	0	0	0	0	0	0	0	0	0	0.00
11.6	Water Absorption	IS: 2386 (P-3)	As Required	0	0	0	0	0	0	0	0	0	0	0	0	0.00
11.7	Soundness	IS: 2386 (P-3)	As Required	0	0	0	0	0	0	0	0	0	0	0	0	0.00
11.8	Field Compaction Test (WMM)	IS: 2720 (P-28)	1 Set / 1000 Sqm. (1Set = 3 Pit's)	0	0	0	0	0	0	0	0	0	0	0	0	0.00
(XI). Aggregate Inter Layer (AIL)				MoRT&H-406												
12.1	Gradation	Table 400-13	1 Test /200 Cum.	0	0	0	0	0	0	0	0	0	0	0	0	0.00
12.2	Atterberg limits (LL & PI)	IS: 2720 (P-5)	1 Test /200 Cum.	0	0	0	0	0	0	0	0	0	0	0	0	0.00
12.3	Proctor test (MDD & OMC)	IS: 2720 (P-8)	As Required	0	0	0	0	0	0	0	0	0	0	0	0	0.00
12.4	Aggregate Impact Value (AIV)	IS: 2386 (P-4)	1 Test/ 1000 Cum	0	0	0	0	6	0	0	6	0	0	0	0	0.00
12.5	Combined Flakiness & Elongation (FI & EL)	IS: 2386 (P-1)	1 Test /500 Cum	0	0	0	0	0	0	0	0	0	0	0	0	0.00
12.6	Water Absorption	IS: 2386 (P-3)	As Required	0	0	0	0	0	0	0	0	0	0	0	0	0.00
12.7	Soundness	IS: 2386 (P-3)	As Required	0	0	0	0	0	0	0	0	0	0	0	0	0.00
12.8	Field Compaction Test (AIL)	IS: 2720 (P-28)	1 Set / 1000 Sqm. (1Set = 3 Pit's)	0	0	0	0	0	0	0	0	0	0	0	0	0.00

4-L of NH 37 from design Ch 0+000 on NH-8 near Karimganj to design Chainage 14+250 near Sutarkandi (Spur Connectivity to Indo/Bangladesh Border) Silchar-Churaibari Pkg-7 in the State of Assam on HAM mode.

(XII). Dense Bituminous Macadam (DBM)		MoRT&H-500															
13.1	Binder Content & Gradation	As per MoRT&H	1 Test / 400 Tonnes	0	0	0	0	0	0	0	0	0	0	0	0	0	0.00
13.2	Mix Combined Gradation	As per MoRT&H	1 Test / 400 Tonnes	0	0	0	0	0	0	0	0	0	0	0	0	0	0.00
13.3	Marshall Test (In Sets)	ASTM-D-1559	1 Set/ 400 Tonnes	0	0	0	0	0	0	0	0	0	0	0	0	0	0.00
13.4	Aggregate Impact Value (A.I.V)	IS: 2386 (P-4)	1 Test / 350 Cum	0	0	0	0	0	0	0	0	0	0	0	0	0	0.00
13.5	Combined Flakiness & Elongation (FI & EI)	IS: 2386 (P-1)	1 Test / 350 Cum	0	0	0	0	0	0	0	0	0	0	0	0	0	0.00
13.6	Water Absorption & Specific Gravity	IS: 2386 (P-3)	1 Test/ Source & As Required	0	0	0	0	0	0	0	0	0	0	0	0	0	0.00
13.7	Stripping Value	IS: 6241	1 Test/ Source & As Required	0	0	0	0	0	0	0	0	0	0	0	0	0	0.00
13.8	Maximum Sp.Gravity(Gmm)	ASTM D 2041	1 Set/ 400 MTMix	0	0	0	0	0	0	0	0	0	0	0	0	0	0.00
13.9	Density of compacted layer	MoRT&H Sec.900	1 Test / 700 Sq.m	0	0	0	0	0	0	0	0	0	0	0	0	0	0.00
13.10	Soundness	IS: 2386 (P-3)	1 Test/ Source & As Required	0	0	0	0	0	0	0	0	0	0	0	0	0	0.00
13.11	Sand equivalent test	IS: 2720 (P-37)	1 Test/ Source & As Required	0	0	0	0	0	0	0	0	0	0	0	0	0	0.00
13.12	plasticity Index	MoRT&H Sec.900	1 Test/ Source & As Required	0	0	0	0	0	0	0	0	0	0	0	0	0	0.00
13.13	percentage of Fractured face	MoRT&H Sec.900	1 Test/ Source & As Required	0	0	0	0	0	0	0	0	0	0	0	0	0	0.00
13.14	Polished Stone Value	BS: 812 (P-114)	1 Test/ Source & As Required	0	0	0	0	0	0	0	0	0	0	0	0	0	0.00
(XIII). Bituminous Concrete (BC)		MoRTH-500															
14.1	Binder Content & Gradation	As per MoRT&H	1 Test / 400 Tonnes	0	0	0	0	0	0	0	0	0	0	0	0	0	0.00
14.2	Mix Combined Gradation	As per MoRT&H	1 Test / 400 Tonnes	0	0	0	0	0	0	0	0	0	0	0	0	0	0.00
14.3	Marshall Test (In Sets)	ASTM-D-1559	1 Tet/ 400 Tonnes	0	0	0	0	0	0	0	0	0	0	0	0	0	0.00
14.4	Aggregate Impact Value (A.I.V)	IS: 2386 (P-4)	1 Test / 350 Cum	0	0	0	0	0	0	0	0	0	0	0	0	0	0.00
14.5	Combined Flakiness & Elongation (FI & EI)	IS: 2386 (P-1)	1 Test / 350 Cum	0	0	0	0	0	0	0	0	0	0	0	0	0	0.00
14.6	Water Absorption & Specific Gravity	IS: 2386 (P-3)	1 Test/ Source & As Required	0	0	0	0	0	0	0	0	0	0	0	0	0	0.00
14.7	Stripping Value	IS: 6241	1 Test/ Source & As Required	0	0	0	0	0	0	0	0	0	0	0	0	0	0.00
14.8	Maximum Sp.Gravity(Gmm)	ASTM D 2041	1 set/ 400 MTMix	0	0	0	0	0	0	0	0	0	0	0	0	0	0.00
14.9	Density of Compacted Layer	MoRT&H Sec.900	1 test / 700 Sq.m	0	0	0	0	0	0	0	0	0	0	0	0	0	0.00
14.10	Soundness	IS: 2386 (P-3)	1 Test/ Source & As Required	0	0	0	0	0	0	0	0	0	0	0	0	0	0.00
14.11	Sand equivalent test	IS: 2720 (P-37)	1 Test/ Source & As Required	0	0	0	0	0	0	0	0	0	0	0	0	0	0.00
14.12	plasticity Index	MoRT&H Sec.900	1 Test/ Source & As Required	0	0	0	0	0	0	0	0	0	0	0	0	0	0.00
14.13	percentage of Fractured face	MoRT&H Sec.900	1 Test/ Source & As Required	0	0	0	0	0	0	0	0	0	0	0	0	0	0.00
14.14	Polished Stone Value	BS: 812 (P-114)	1 Test/ Source & As Required	0	0	0	0	0	0	0	0	0	0	0	0	0	0.00
(XIV). Bitumen (VG-40)																	
15.1	Softening Point(°C)	IS: 1205	1 Test Per Lot	0	0	0	0	0	0	0	0	0	0	0	0	0	0.00
15.2	Penetration at 25°C 100gm 5 Sec	IS: 1203	1 Test Per Lot	0	0	0	0	0	0	0	0	0	0	0	0	0	0.00
15.3	Ductility at 25°C	IS: 1208	As Required	0	0	0	0	0	0	0	0	0	0	0	0	0	0.00
15.4	Absolute Viscosity at 60°/135°C (CST)	IS: 1206 (P-2)	1 Test Per Lot	0	0	0	0	0	0	0	0	0	0	0	0	0	0.00
15.5	Kinematic Viscosity at 135°C (CST)	IS: 1206 (P-3)	As Required	0	0	0	0	0	0	0	0	0	0	0	0	0	0
15.6	Specific Gravity at 27°C	IS: 2380 (P-4)	As Required	0	0	0	0	0	0	0	0	0	0	0	0	0	0.00
15.7	Flash Pint	IS: 1209 (IS: 1448 P-69)	As Required	0	0	0	0	0	0	0	0	0	0	0	0	0	0
15.8	Solubility Test	IS: 1216	As Required	0	0	0	0	0	0	0	0	0	0	0	0	0	0
(XV). MODIFIED BITUMEN (PMB 76E-10)																	
16.1	Specific Gravity at 27°C	IS: 2380 (P-4)	As Required	0	0	0	0	0	0	0	0	0	0	0	0	0	0.00
16.2	Softening Point (°C)	IS: 1205	1 Test Per Lot	0	0	0	0	0	0	0	0	0	0	0	0	0	0.00
16.3	Seperation, Difference in Softening Point (0°C)	IS: 15462: 2019	1 Test Per Lot	0	0	0	0	0	0	0	0	0	0	0	0	0	0.00
16.4	Elastic Recovery at 15°C	IS: 15462: 2019	1 Test Per Lot	0	0	0	0	0	0	0	0	0	0	0	0	0	0.00
(XVI). Emulsion (SS-1)																	
17.1	Viscosity @ 25°C	IS: 8887:2004	1 Test Per Lot	0	0	0	0	0	0	0	0	0	0	0	0	0	0
17.2	Water Content	IS: 8887:2004	As Required	0	0	0	0	0	0	0	0	0	0	0	0	0	0
17.3	Prime coat	IS: 8887:2004	3 test / Day	0	0	0	0	0	0	0	0	0	0	0	0	0	0.00
(XVII). Emulsion (RS-1)																	
18.1	Viscosity @ 50°C	IS: 8887:2004	1 Test Per Lot	0	0	0	0	0	0	0	0	0	0	0	0	0	0
18.2	Water Content	IS: 8887:2004	As Required	0	0	0	0	0	0	0	0	0	0	0	0	0	0
18.3	Tack Coat	IS: 8887:2004	3 test / Day	0	0	0	0	0	0	0	0	0	0	0	0	0	0.00
(XVIII). Lean Concrete (DLC)		MoRT&H-600															
13.1	Gradation	Table 600-1	1 test / day	0	0	0	0	0	0	0	0	0	0	0	0	0	0.00
13.2	Field Compaction Test	IS: 2720 (P-28)	1 Set(3 pit) of tests / 2000 sqm.	0	0	0	0	0	0	0	0	0	0	0	0	0	0.00
13.3	Proctor test (MDD & OMC)	IS: 2720 (P-8)	As required	0	0	0	0	0	0	0	0	0	0	0	0	0	0.00
13.4	Aggregate Impact Value (A.I.V)	IS: 2386 (P-4)	As required	0	0	0	0	0	0	0	0	0	0	0	0	0	0.00
13.5	Flakiness & Elongation (FI & EI)	IS: 2386 (P-1)	As required	0	0	0	0	0	0	0	0	0	0	0	0	0	0.00
13.6	Water Absorption	IS: 2386 (P-3)	As required	0	0	0	0	0	0	0	0	0	0	0	0	0	0.00
13.7	Moisture correction	IS: 2386 (P-3)	1 test / Day	0	0	0	0	0	0	0	0	0	0	0	0	0	0.00
13.8	Compressive Strength (07 day's)	IS: 516	07 days/ Each Day 5 Cube's	0	0	0	0	0	0	0	0	0	0	0	0	0	0.00

4-L of NH 37 from design Ch 0+000 on NH-8 near Karimganj to design Chainage 14+250 near Sutarkandi (Spur Connectivity to Indo/Bangladesh Border) Silchar-Churaibari Pkg-7 in the State of Assam on HAM mode.

(XIX). Pavement Quality Concrete (PQC)		MoRT&H-600														
141	Gradation	Table 600-1	1 Test / Day	0	0	0	0	0	0	0	0	0	0	0	0	0.00
142	Aggregate Impact Value (A.I.V)	IS: 2386 (P-4)	As Required	0	0	0	0	0	0	0	0	0	0	0	0	0.00
143	Flakiness 7 Elongation (Fl & El)	IS: 2386 (P-4)	As Required	0	0	0	0	0	0	0	0	0	0	0	0	0.00
144	Water Absorption	IS: 2386 (P-3)	As Required	0	0	0	0	0	0	0	0	0	0	0	0	0.00
145	Slump Test	IS: 1199	1 Test Each Dumper	0	0	0	0	0	0	0	0	0	0	0	0	0.00
146	Compressive Strength (07 day's)	IS: 516	Compressive Strength (07 day's)	0	0	0	0	0	0	0	0	0	0	0	0	0.00
147	Compressive Strength (28 day's)	IS: 516		0	0	0	0	0	0	0	0	0	0	0	0	0.00
148	Flexural Strength (07 day's)	IS: 516		0	0	0	0	0	0	0	0	0	0	0	0	0.00
149	Flexural Strength (28 day's)	IS: 516	As per Frequency 02 Beam's /150 Cum (Min. 6 Beam's)	0	0	0	0	0	0	0	0	0	0	0	0	0.00
THIRD PARTY TESTS (NABL ACCREDITED LABORATORY)																
(XX). Coarse Aggregates																
181	Gradation	IS: 2386 (P-1)	1 Test / Source	2	2	0	0	0	0	2	2	0	0	0	0	0.00
182	Fl & El	IS: 2386 (P-1)	1 Test / Source	2	2	0	0	0	0	2	2	0	0	0	0	0.00
183	Aggregate Impact Value	IS: 2386 (P-4)	1 Test / Source	2	2	0	0	0	0	2	2	0	0	0	0	0.00
184	Specific Gravity	IS: 2386 (P-3)	1 Test / Source	2	2	0	0	0	0	2	2	0	0	0	0	0.00
185	Water Absorption	IS: 2386 (P-3)	1 Test / Source	2	2	0	0	0	0	2	2	0	0	0	0	0.00
186	Deleterious Content	IS: 2386 (P-1)	1 Test / Source	2	2	0	0	0	0	2	2	0	0	0	0	0.00
187	L.A.V.	IS: 2386 (P-4)	1 Test / Source	2	2	0	0	0	0	2	2	0	0	0	0	0.00
188	Alkali Aggregate Reactivity	IS: 2386 (P-7)	1 Test / Source	2	2	0	0	0	0	2	2	0	0	0	0	0.00
189	Soundness	IS: 2386(P-5)	1 Test / Source	2	2	0	0	0	0	2	2	0	0	0	0	0.00
18.10	Petrographic Examination	IS: 2386 (P-8)	1 Test / Source	2	2	0	0	0	0	2	2	0	0	0	0	0.00
18.11	Stone Polished Value	BS-812 (P-114)	1 Test / Source	2	2	0	0	0	0	2	2	0	0	0	0	0.00
(XXI). Fine Aggregates																
191	Gradation	IS: 383	1 Test / Source	1	1	0	0	0	0	1	1	0	0	0	0	0.00
192	Specific Gravity	IS: 2386 (P-3)	1 Test / Source	1	1	0	0	0	0	1	1	0	0	0	0	0.00
193	Water Absorption	IS: 2386 (P-3)	1 Test / Source	1	1	0	0	0	0	1	1	0	0	0	0	0.00
194	Deleterious Content	IS: 2386 (P-1)	1 Test / Source	1	1	0	0	0	0	1	1	0	0	0	0	0.00
195	Silt Content	IS: 2386 (P-4)	1 Test / Source	1	1	0	0	0	0	1	1	0	0	0	0	0.00
196	Alkali Aggregate Reactivity	IS: 2386 (P-7)	1 Test / Source	1	1	0	0	0	0	1	1	0	0	0	0	0.00
197	Soundness	IS: 2386(P-5)	1 Test / Source	1	1	0	0	0	0	1	1	0	0	0	0	0.00
198	Organic Impurities	IS: 2386 (P-8)	1 Test / Source	1	1	0	0	0	0	1	1	0	0	0	0	0.00
199	Fineness Modulus	IS: 383	1 Test / Source	1	1	0	0	0	0	1	1	0	0	0	0	0.00
(XXII). TMT Bar's (Steel)																
201	Physical properties	IS: 1786	< 10mm - 1 sample/25 MT, 10-16mm-1sample/35 MT,	0	0	0	9	9	0	9	9	0	0	0	0	0.00
202	Chemical properties	IS: 1786	> 16mm - 1 sample/45 MT	0	0	0	9	9	0	9	9	0	0	0	0	0.00
(XXIII). Construction Water																
211	Suitability for construction	IS: 456	1 Test Per Source / As Required	1	1	0	0	0	0	1	1	0	0	0	0	0.00
(XXIV). Chemical Admixture																
221	Physical & Chemical properties	IS: 9103	1 Test/ Per Lot	0	0	0	1	1	0	1	1	0	0	0	0	0.00
(XXV). Cement (OPC-53 Grade)																
231	Physical & Chemical properties	IS: 8112	1 Test / Source	0	0	0	1	1	0	1	1	0	0	0	0	0.00
(XXVI). Soil - Borrow Area																
241	Mechanical	IS: 2720 (P-39)	1 Test / Source	0	0	0	0	0	0	0	0	0	0	0	0	0.00
(XXVII). NP-4 Hume Pipe Test																
251	600 MM	IS: 458	1 test per Lot /of 50 Pipes	0	0	0	0	0	0	0	0	0	0	0	0	0.00
(XXVIII). Bitumen (Emulsion)																
261	Bitumen Emulsion SS-1	IS: 8887	1 Test/ Per Lot	0	0	0	0	0	0	0	0	0	0	0	0	0.00
262	Bitumen Emulsion RS-1	IS: 8887	1 Test/ Per Lot	0	0	0	0	0	0	0	0	0	0	0	0	0.00
(XXIX). Bitumen (VG-40)																
271	Bitumen VG-40	IS: 73	1 Test/ Per Lot	0	0	0	0	0	0	0	0	0	0	0	0	0.00
(XXX). Bitumen (PMB)																
281	Bitumen PMB	IS: 15462-2019	1 Test/ Per Lot	0	0	0	0	0	0	0	0	0	0	0	0	0.00
(XXXI). Curing Compound																
291	Physical & Chemical properties	ASTM C309	1 Test/ Per Lot	0	0	0	0	0	0	0	0	0	0	0	0	0.00
Remarks:																

4-L of NH 37 from design Ch 0+000 on NH-8 near Karimganj to design Chainage 14+250 near Sutarkandi (Spur Connectivity to Indo/Bangladesh Border) Silchar-Churaibari Pkg-7 in the State of Assam on HAM mode.

**CHAPTER-11
CORRESPONDENCE**

11.1 Outward Letter

Sr. No.	Letter No.	Date	Subject	To	Remarks
1	MKCIL/ASSAM/P KG-07/220	02.06.2025	Notification of Flood Fury & Extremely Heavy Torrential Rain as per Article 28 of the Concession Agreement.	TL (TASPL)	
2	MKCIL/ASSAM/P KG-07/222	03.06.2025	Regarding Submission of Typical D&D for Precast Toe Wall.	TL (TASPL)	
3	MKCIL/ASSAM/P KG-07/224	04.06.2025	Regarding Source Approval of Material.	TL (TASPL)	
4	MKCIL/ASSAM/P KG-07/225	04.06.2025	Submission of Monthly Progress Report for the month of May 2025	TL (TASPL)	
5	MKCIL/ASSAM/P KG-07/229	05.06.2025	Regarding Submission of Typical Design & Drawing for Precast additional Box Culvert (1x4x3).	TL (TASPL)	
6	MKCIL/ASSAM/P KG-07/230	05.06.2025	Regarding Submission of Design & Drawing for ROB at Ch. 04+624 (A1 & A2)	TL (TASPL)	
7	MKCIL/ASSAM/P KG-07/232	07.06.2025	Notification Regarding closure of Major Bridge (Known as Gammon Bridge) over Barak River as per Article 28, Force majeure of the Concession Agreement.	TL (TASPL)	
8	MKCIL/ASSAM/P KG-07/235	12.06.2025	Regarding Submission of Rigid Pavement Design report for TCS III & V.	TL (TASPL)	
9	MKCIL/ASSAM/P KG-07/236	12.06.2025	Regarding Submission of Design & Drawings for MNB at Ch. 01+768.	TL (TASPL)	
10	MKCIL/ASSAM/P KG-07/237	12.06.2025	Submission of Cement Samples for Conducting Third Party Test. (Dalmia Bharat Cement Limited, Star Cement, & Max Cement OPC-53)	Managing Director (Avian Test Lab)	
11	MKCIL/ASSAM/P KG-07/238	12.06.2025	Submission of Admixture Samples for Conducting Third Party Test.	Managing Director (Avian Test Lab)	
12	MKCIL/ASSAM/P KG-07/239	12.06.2025	Submission of Steel Samples for Conducting Third Party Test. (Elegant Steel, & Rashmi Steel).	Managing Director (Avian Test Lab)	
13	MKCIL/ASSAM/P KG-07/245	16.06.2025	Notifying the delay in Providing Right of Way to the Concessionaire in respect of all land.	GM (NHIDCL)	
14	MKCIL/ASSAM/P KG-07/246	16.06.2025	Submission of Work Program along with S-Curve.	TL (TASPL)	
15	MKCIL/ASSAM/P KG-07/248	18.06.2025	Maintenance of Existing Highway-reg.	GM (NHIDCL)	
16	MKCIL/ASSAM/P KG-07/249	18.06.2025	Notification regarding collapse of Bridge over Harang River as per Article 28, Force Majeure of the Concession Agreement.	TL (TASPL)	
17	MKCIL/ASSAM/P KG-07/252	19.06.2025	Reg. Submission of Third Party Test Report of Steel.	TL (TASPL)	
18	MKCIL/ASSAM/P KG-07/253	19.06.2025	Reg. Submission of Steel Samples for Conducting Third Party Test.	Managing Director (Avian Test Lab)	
19	MKCIL/ASSAM/P KG-07/255	26.06.2025	Submission of Workmen's Compensation (WC) Insurance Policy.	GM (NHIDCL)	

4-L of NH 37 from design Ch 0+000 on NH-8 near Karimganj to design Chainage 14+250 near Sutarkandi (Spur Connectivity to Indo/Bangladesh Border) Silchar-Churaibari Pkg-7 in the State of Assam on HAM mode.

20	MKCIL/ASSAM/P KG-07/258	28.06.2025	Submission of Third-Party Test Reports of Berger Admixture, Max Cement (OPC-53), Dalmia cement (OPC-53) & Star Cement (OPC-53) for Source Approval.	TL (TASPL)	
21	MKCIL/ASSAM/P KG-07/260	30.06.2025	Consent for handling Expenditure of Independent Engineer (IE).	GM (NHIDCL)	

11.2 Inward Letter (NHIDCL & TASPL)

Sr. No.	Letter No.	Date	Subject	From	Remarks
1	TASPL-MAV/NH-37/MKCIL/2025/MAY/18	14.06.2025	Reg:- Profile & Credential of Avian Test Lab PVT. Ltd. For Third Party Laboratory.	TASPL	
2	TASPL-MAV/NH-37/MKCIL/2025/MAY/19	14.06.2025	Reg:- Profile & Credential of Delhi Test House For Third Party Laboratory.	TASPL	
3	TASPL-MAV/NH-37/MKCIL/2025/MAY/20	18.06.2025	Regarding approval of Work Program along with S-Curve.	TASPL	
4	TASPL-MAV/NH-37/MKCIL/2025/MAY/21	18.06.2025	Reg Approval of Submitted Documents Following Compliance to Observations.	TASPL	
5	TASPL-MAV/NH-37/MKCIL/2025/MAY/23	21.06.2025	Reg- Approval of RE Block Drawing.	TASPL	
6	TASPL-MAV/NH-37/MKCIL/2025/MAY/24	21.06.2025	Reg- Approval of Design & Drawing for Box Underpass (1x4x4) at Ch. (02+340, 07+906 & 08+296).	TASPL	
7	TASPL-MAV/NH-37/MKCIL/2025/MAY/25	21.06.2025	Reg- Approval of Design & Drawing for Box Underpass (1x4x4) at Ch. (04+534).	TASPL	
8	TASPL-MAV/NH-37/MKCIL/2025/MAY/26	23.06.2025	Reg- On Principle Source Approval for Reinforcement Steel-Shyam Steel Industries.	TASPL	
9	TASPL-MAV/NH-37/MKCIL/2025/MAY/27	23.06.2025	Reg- On Principle Source Approval for Reinforcement Steel-Rashmi Steel Limited.	TASPL	
10	TASPL-MAV/NH-37/MKCIL/2025/MAY/28	23.06.2025	Reg- On Principle Source Approval for Reinforcement Steel-Elegant Steel.	TASPL	
11	TASPL-MAV/NH-37/MKCIL/2025/MAY/29	23.06.2025	Reg- On Principle Source Approval of Concrete Mix Design-Pending Source Approval of Constituent Materials.	TASPL	
12	TASPL-MAV/NH-37/MKCIL/2025/MAY/32	26.06.2027	Reg: - On-Principal Source Approval for Reinforcement Steel - SRMB Srijan Pvt. Ltd.	TASPL	

4-L of NH 37 from design Ch 0+000 on NH-8 near Karimganj to design Chainage 14+250 near Sutarkandi (Spur Connectivity to Indo/Bangladesh Border) Silchar-Churaibari Pkg-7 in the State of Assam on HAM mode.

CHAPTER-12

NON-CONFORMANCE REPORT

NIL

4-L of NH 37 from design Ch 0+000 on NH-8 near Karimganj to design Chainage 14+250 near Sutarkandi (Spur Connectivity to Indo/Bangladesh Border) Silchar-Churaibari Pkg-7 in the State of Assam on HAM mode.

**CHAPTER-13
WEATHER REPORT**

<i>Sl no.</i>	<i>Date</i>	<i>Temperature (In ^oc)</i>		<i>Humidity (In %)</i>		<i>Rainfall (mm)</i>	<i>Weather Condition</i>
		<i>Maximum</i>	<i>Minimum</i>	<i>Maximum</i>	<i>Minimum</i>		
1	01-06-2025	28.0	26.5	99.0	91.0	45.9	Cloudy/Rainy
2	02-06-2025	27.2	25.1	94.0	86.0	62	Cloudy/Rainy
3	03-06-2025	30.1	25.9	93.0	78.0	6	Cloudy/Rainy
4	04-06-2025	29.4	26.5	92.0	81.0	0	Sunny
5	05-06-2025	28.7	26.2	89.0	84.0	80	Cloudy/Rainy
6	06-06-2025	28.8	27.1	90.0	85.0	4	Cloudy/Rainy
7	07-06-2025	30.5	27.9	85.0	79.0	24	Cloudy/Rainy
8	08-06-2025	30.2	28.9	88.0	81.0	0	Sunny
9	09-06-2025	32.7	29.1	82.0	74.0	0	Sunny
10	10-06-2025	31.2	29.1	79.0	74.0	4	Cloudy/Rainy
11	11-06-2025	32.5	28.8	78.0	71.0	0	Sunny
12	12-06-2025	33.4	30.1	77.0	72.0	0	Sunny
13	13-06-2025	32.6	29.3	76.0	73.0	0	Sunny
14	14-06-2025	31.8	28.9	88.0	77.0	5	Cloudy/Rainy
15	15-06-2025	32.2	29.6	84.0	78.0	7.5	Cloudy/Rainy
16	16-06-2025	32.9	29.4	81.0	75.0	0	Sunny
17	17-06-2025	33.0	30.1	82.0	76.0	10.4	Cloudy/Rainy
18	18-06-2025	30.5	27.9	78.0	74.0	6.4	Cloudy/Rainy
19	19-06-2025	29.1	27.3	87.0	81.0	25.3	Cloudy/Rainy
20	20-06-2025	30.3	28.9	86.0	80.0	18.4	Cloudy/Rainy
21	21-06-2025	31.2	29.4	81.0	77.0	12.2	Cloudy/Rainy
22	22-06-2025	30.1	28.3	88.0	79.0	12.8	Cloudy/Rainy
23	23-06-2025	32.5	29.1	85.0	78.0	6	Cloudy/Rainy
24	24-06-2025	32.1	29.2	90.0	82.0	41	Cloudy/Rainy
25	25-06-2025	30.2	28.7	87.0	80.0	13.3	Cloudy/Rainy
26	26-06-2025	32.4	28.9	81.0	75.0	12.2	Cloudy/Rainy
27	27-06-2025	31.5	28.6	86.0	74.0	10.1	Cloudy/Rainy
28	28-06-2025	31.3	29.1	84.0	77.0	7.2	Cloudy/Rainy
29	29-06-2025	31.0	28.9	81.0	76.0	11.3	Cloudy/Rainy
30	30-06-2025	35.0	31.2	80.0	74.0	62	Cloudy/Rainy

Rainfall Data				
Sr.no.	Description	Total Rainfall	Up to previous month	This month
1	Rainfall	2067	1580.0	487.0

4-L of NH 37 from design Ch 0+000 on NH-8 near Karimganj to design Chainage 14+250 near Sutarkandi (Spur Connectivity to Indo/Bangladesh Border) Silchar-Churaibari Pkg-7 in the State of Assam on HAM mode.

The maximum & minimum weather records are summarized below:

TEMPERATURE/ RAINFALL PERIOD: 1st June, 2025 to 30th June, 2025				
Temperature		Rainfall		
Maximum (in °C)	Minimum (in °C)	Maximum (in mm)	Minimum (in mm)	Total Days
35	25.1	80	4.0	23

4-L of NH 37 from design Ch 0+000 on NH-8 near Karimganj to design Chainage 14+250 near Sutarkandi (Spur Connectivity to Indo/Bangladesh Border) Silchar-Churaibari Pkg-7 in the State of Assam on HAM mode.

CHAPTER-14
ACCIDENT REPORT

NIL

4-L of NH 37 from design Ch 0+000 on NH-8 near Karimganj to design Chainage 14+250 near Sutarkandi (Spur Connectivity to Indo/Bangladesh Border) Silchar-Churaibari Pkg-7 in the State of Assam on HAM mode.

CHAPTER-15

ROAD MAINTENANCE & SAFETY REPORT

The Traffic Safety Arrangements during the execution of works is being carried out by the Concessionaire for safe movement of vehicles on the project highway. The Concessionaire has provided sufficient road signs, temporary barriers, gunny bags filled with soil with reflective stickers etc. at the construction sites.

4-L of NH 37 from design Ch 0+000 on NH-8 near Karimganj to design Chainage 14+250 near Sutarkandi (Spur Connectivity to Indo/Bangladesh Border) Silchar-Churaibari Pkg-7 in the State of Assam on HAM mode.

CHAPTER-16
SITE PHOTOGRAPH



Reinforcement work in Progress at 4+212 (LVUP) BHS



Concrete Pouring of Pre-cast Box-culvert Segment

4-L of NH 37 from design Ch 0+000 on NH-8 near Karimganj to design Chainage 14+250 near Sutarkandi (Spur Connectivity to Indo/Bangladesh Border) Silchar-Churaibari Pkg-7 in the State of Assam on HAM mode.



Sub-structure work at ch-10+098 (LVUP)



ELECTRIC POLE SHIFTING WORK AT 9+300

4-L of NH 37 from design Ch 0+000 on NH-8 near Karimganj to design Chainage 14+250 near Sutarkandi (Spur Connectivity to Indo/Bangladesh Border) Silchar-Churaibari Pkg-7 in the State of Assam on HAM mode.

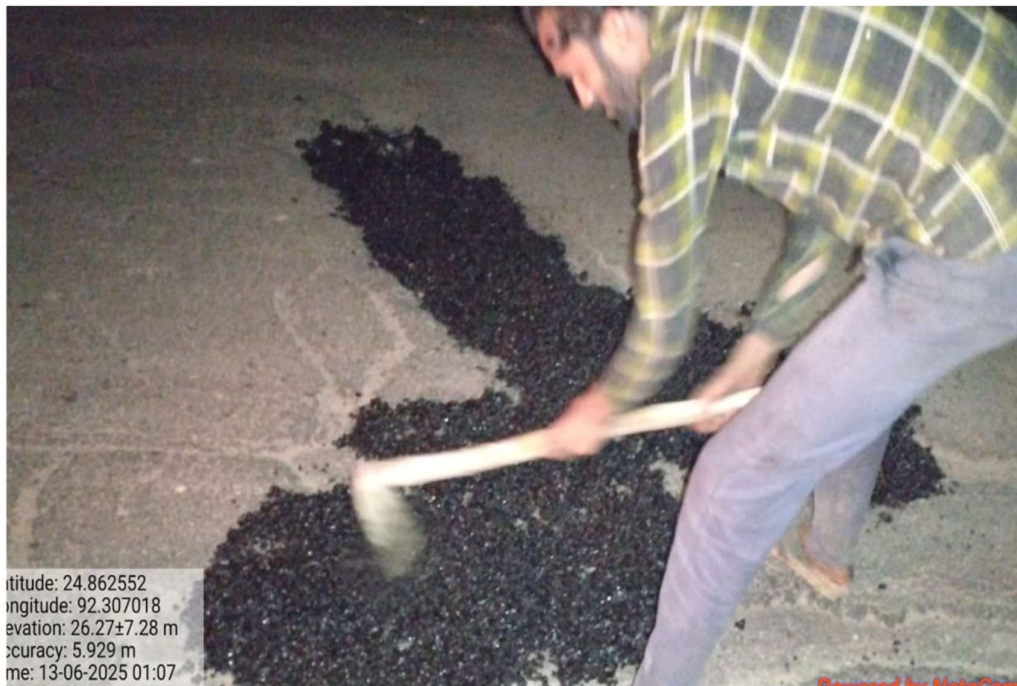


Excavation at chainage 4+212 (LVUP)



Soil dumping at 4+300

4-L of NH 37 from design Ch 0+000 on NH-8 near Karimganj to design Chainage 14+250 near Sutarkandi (Spur Connectivity to Indo/Bangladesh Border) Silchar-Churaibari Pkg-7 in the State of Assam on HAM mode.



Existing road maintenance near karimganj town



Existing road maintenance near karimganj town

4-L of NH 37 from design Ch 0+000 on NH-8 near Karimganj to design Chainage 14+250 near Sutarkandi (Spur Connectivity to Indo/Bangladesh Border) Silchar-Churaibari Pkg-7 in the State of Assam on HAM mode.



Existing road maintenance near karimganj town



Existing road maintenance near karimganj town