



4-L of NH 37 from design Ch 0+020 on NH-8 near Karimganj to design Chainage 14+380 near Sutarkandi (Spur Connectivity to Indo/Bangladesh Border) Silchar-Churaibari Pkg-7 in the State of Assam on HAM mode.

Monthly Progress Report

December - 2025



Authority		National Highways Infrastructure Development Corporation Limited
Independent Engineer		M/s Technocrafts Advisory Services Private Limited in association with M/s MAV Associates LLP
Concessionaire		MKC Badarpur Churaibari Kamakhya (PKG-7) Highways Pvt. Ltd.

4-L of NH 37 from design Ch 0+020 on NH-8 near Karimganj to design Chainage 14+380 near Sutarkandi (Spur Connectivity to Indo/Bangladesh Border) Silchar-Churaibari Pkg-7 in the State of Assam on HAM mode.

TABLE OF CONTENTS

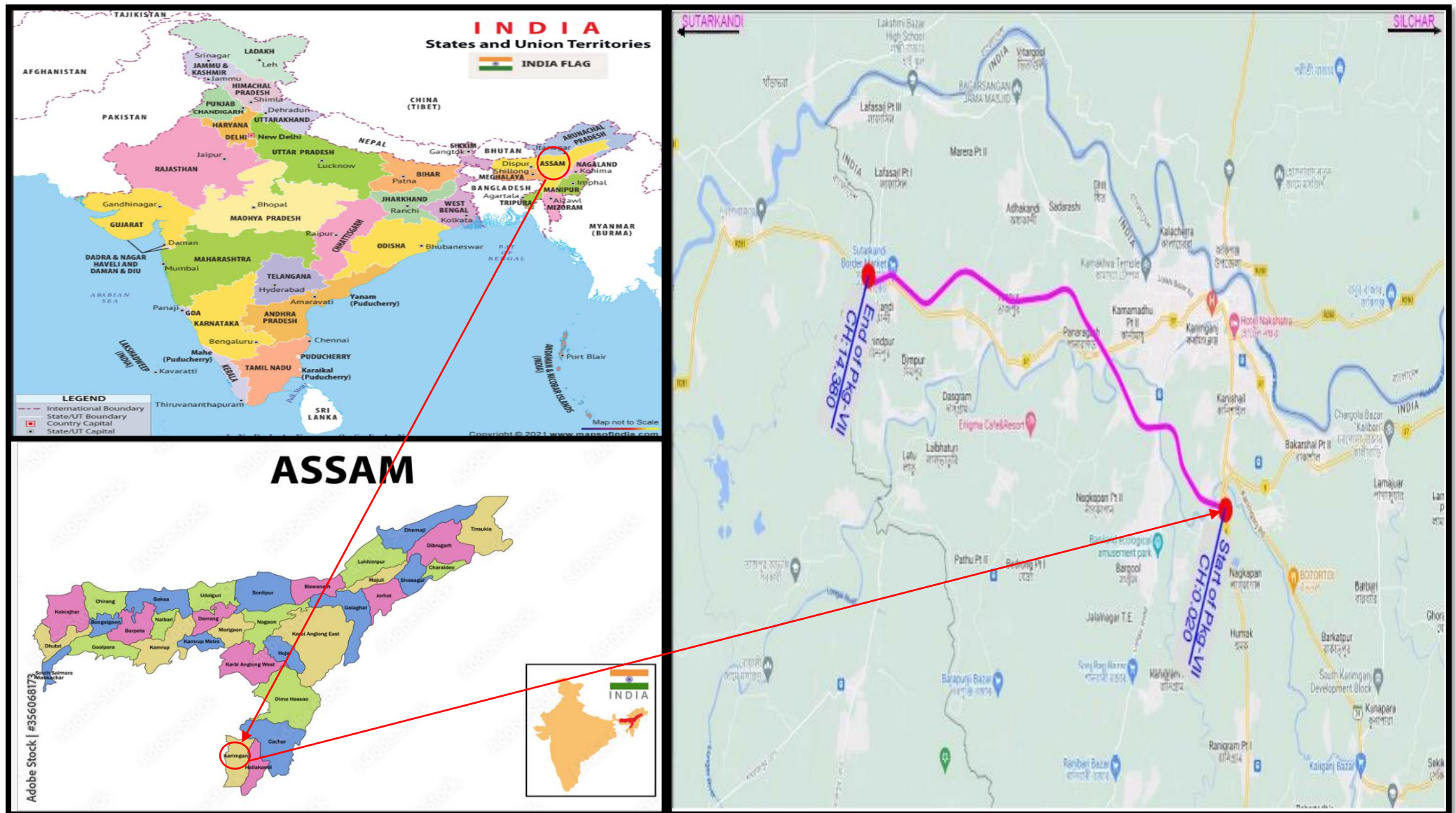
CHAPTERS	DESCRIPTIONS	PAGES
	TABLE OF CONTENTS	
	Project Road Location Map / Index Map	
	EXECUTIVE SUMMARY	
	1. The Project Road	
	2. Mobilization	
	3. Pre-Construction Activity	
	4. EPC Contractor	
	5. Design & Drawing	
	6. Work Program	
	7. Quality Control & Material	
	8. Supervision and Monitoring of Project works	
	9. Site Visit and Meeting	
	10. Schedule Completion Date	
	11. Operation and Maintenance (O&M)	
	12. Area of Concern	
	13. Current Issues	
1	INTRODUCTION	
	General	
2	CONTRACT DATA	
3	SALIENT FEATURES OF PROJECT HIGHWAY	
	3.1 Pavement Composition (MCW)	
	3.2 Details of New/ Widening of Structures and Project Facilities	
4	SCOPE OF WORKS AND PROJECT FACILITIES	
	4.1 Scope of Works	
	4.2 Project Facilities	
5	PRE-CONSTRUCTION ACTIVITY	
	5.1 Obligations	
	5.2 Shifting of Utilities	
	5.3 Tree Cutting	
	5.4 Land Acquisition	

4-L of NH 37 from design Ch 0+020 on NH-8 near Karimganj to design Chainage 14+380 near Sutarkandi (Spur Connectivity to Indo/Bangladesh Border) Silchar-Churaibari Pkg-7 in the State of Assam on HAM mode.

	5.5 Hindrance, Payment Status and LA Status	
6	MOBILIZATION	
	6.1 Manpower Mobilization of Concessionaire	
	6.2 Organization Chart of Concessionaire	
7	DEPLOYMENT OF PLANTS AND EQUIPMENT / PROJECT SET UP PLAN	
	7.1 Plants and Equipment Deployed	
8	DESIGN AND DRAWING	
	8.1 Design	
	8.2 Drawing	
	8.3 Status of Drawings	
9	PROJECT WORK PROGRESS	
	9.1 Work Progress	
	9.2 Structure work Progress	
	9.3 Weightages of Components	
	9.4 S Curve of Project	
	9.5 Detailed Highway & Structure Works Progress	
10	QUALITY CONTROL AND MATERIAL	
	10.1 Quality Control	
	10.2 Site Laboratory	
	10.3 Material Testing	
	10.3.1 Soli and Aggregates	
	10.3.2 Cement	
	10.3.3 Reinforcement Steel	
	10.3.4 Status of Material Sources Approvals & Mix Designs	
	10.3.5 Details of QC Test conducted during the month	
11	CORRESPONDENCE	
12	NON-CONFORMANCE REPORT	
13	WEATHER REPORT	
14	ACCIDENT REPORT	
15	ROAD MAINTENANCE AND SAFETY REPORT	
16	PROJECT PROGRESS PHOTOGRAPHS	

4-L of NH 37 from design Ch 0+020 on NH-8 near Karimganj to design Chainage 14+380 near Sutarkandi (Spur Connectivity to Indo/Bangladesh Border)
 Silchar-Churaibari Pkg-7 in the State of Assam on HAM mode.

PROJECT LOCATION MAP / INDEX MAP



EXECUTIVE SUMMARY

The Concessionaire has signed the Concession Agreement with National Highway Infrastructure Development Corporation Limited (NHIDCL) on dated September 17, 2024. This Executive Summary presents the works progress of the Project Highway during the construction period from February 28, 2025 to February 27, 2027.

1. The Project Road:

4-L of NH 37 from design Ch 00+020 on NH-8 near Karimganj to design Chainage 14+380 near Sutarkandi (Spur Connectivity to Indo/Bangladesh Border) Silchar-Churaibari Pkg-7 in the State of Assam on HAM mode.

2. Mobilization:

The Concessionaire has mobilized the required Engineers/ Staff Personnel, Machineries/Equipment's, Plants and established main Base Camp at CH: - 5+600 LHS (Darakona).

The details of Key staff personnel deployed are highlighted in the Chapter-6 of this report. The details of deployed Plants and Machineries are included in Chapter-7 of this report.

3. Pre-Construction Activity:

The Details of pre-construction activities have been included in Chapter-5 of this report.

4. EPC Contractor:

MKC Infrastructure Limited the details of project highway works have been included in Chapter-09 of this report.

5. Design and Drawing

The details of design and drawing status have been included in this report on Chapter 8.

7. Work Program:

At the time of commencement of works, the Concessionaire submitted the Stage wise completion schedule Work Program Vide Letter No. MKCIL/ASSAM/PKG-07/162, dated 17.04.2025 for Authority/IE's approval. Based on the monthly works plan, the works is being carried out by the Concessionaire.

8. Quality Control and Material:

The works is being carried out by the Concessionaire as per Quality Assurance Plan submitted to Authority Vide Letter MKCIL/ASSAM/PKG-07/139 on dated 07.04.2025. Each construction activity is being checked/verified as per the RFI's submitted to Authority/ IE by the Concessionaire.

9. Supervision and Monitoring of Project works:

The Authority/ IE along with the concessionaire is supervising and monitoring the execution of works as per requirements of Standard/ Specifications. The monitoring of works is being carried out through the RFI submitted by the Concessionaire and its approval/ rejection after necessary checking/ verification by the Authority/ IE.

4-L of NH 37 from design Ch 0+020 on NH-8 near Karimganj to design Chainage 14+380 near Sutarkandi (Spur Connectivity to Indo/Bangladesh Border) Silchar-Churaibari Pkg-7 in the State of Assam on HAM mode.

10. Site Visit and Meeting:

The Authority/ IE Engineers are regularly visiting the Project Highway.

11. Schedule Completion Date:

As per Schedule-G of the Concession Agreement shall occur on the 730th day from the Appointed Date. The declared Appointed Date being February 28, 2025, the Scheduled completion Date shall occur on February 27, 2027.

12. Operation and Maintenance (O&M):

O&M Obligations – During Operation Period, the Concessionaire shall operate and maintain the project in accordance with this Agreement either by itself, or through the O&M Contractor and if required, modify repair or otherwise make improvements to the Project to comply with the provisions of this Agreement, Applicable Laws and Applicable Permits, and conform to Specifications and Standards and Good industry Practice. The obligations of the concessionaire shall be as per Article 17.

13. Area of Concern/ Availability of site for work:

Procurement of ROW- The existing ROW and the stretches of 14.360 km. are subjected to following:

a) Stretches/ Hindered Free Land 11.51 Km out of 14.36 Km:

Stretches/ Hindered Free Land				Encumbrances/ Hindered Land		
Sr. No.	Side	Length (Km)	%	Side	Length (Km)	%
1.	BHS	11.510	80.20%	BHS	2.850	19.80%

b) Hindered due to Tree Cutting:

Description	Total Nos.	Cutting Tree	Balance	Impacted Length (km)	Remarks
Total Trees	407	100	307	2.0	

c) Encumbrances due to Religious Structure:

Sr. No.	Types	Chainage	Side	Status	Remarks
1.	Small Temple	2+750	RHS	Done	
2.	Temple	4+150	LHS	Shifting in Progress	
3.	Kabristan	4+300	BHS	Done	
4.	Masjid	4+500	BHS		Delay by CALA
5.	Kabristan	7+300	BHS	Done	

4-L of NH 37 from design Ch 0+020 on NH-8 near Karimganj to design Chainage 14+380 near Sutarkandi (Spur Connectivity to Indo/Bangladesh Border) Silchar-Churaibari Pkg-7 in the State of Assam on HAM mode.

d) Details of Hidered Land:

DETAILS OF ENCUMBRANCES WITHIN ROW							
Sr. No	Chainage		Side	Total Length (KM)	Description	Work Affected	Remarks
	From	To					
1	0+250	0+350	BHS	100.00	Brick Industry	Earth Work	
2	2+700	2+850	BHS	150.00	Residential Houses	RE Wall	
3	3+650	3+700	BHS	50.00	Residential Houses	Earth work	
4	3+900	3+980	BHS	80.00	Assam Type House & Shade	Earth Work	
4	4+080	4+180	LHS	100.00	Assam Type House& Temple	Earth Work	
5	4+200	4+300	BHS	100.00	Assam Type House	Earth Work	
5	4+420	4+550	RHS	130.00	Masjid & Kabristan	Earth Work	
6	4+650	4+700	RHS	50.00	Assam Type House	Earth Work	
6	5+400	5+450	BHS	50.00	Assam Type House	Earth Work	
7	5+450	5+480	BHS	30.00	Assam Type residential houses	Earth work	
7	5+550	5+650	BHS	100.00	Assam Type residential houses	VUP	
8	6+600	6+650	BHS	50.00	RCC & Assam Type Houses	Box-culvert	
8	7+250	7+300	BHS	50.00	Assam/RCC Type Houses & Kabristan	Box-culvert	
9	9+280	9+400	BHS	120.00	Assam Type residential houses	Toe Wall and earth work	
9	10+900	10+950	BHS	50.00	Assam Type residential houses	Earth work	
10	11+250	11+400	BHS	150.00	Assam Type residential houses	Earth Work	
10	12+250	12+450	BHS	200.00	Assam Type residential houses	Earth Work	
11	12+590	12+620	BHS	30.00	Assam Type residential houses	Earth Work	
11	12+800	12+900	BHS	100.00	Assam Type residential houses	Earth Work	
12	13+100	13+200	RHS	100.00	Assam Type residential houses	Earth Work	
12	13+400	13+500	BHS	100.00	Assam Type residential houses	Earth Work	
13	13+650	13+680	LHS	30.00	Assam Type residential houses	Earth Work	
13	13+800	13+900	BHS	100.00	Assam Type residential houses	Earth Work	
14	13+950	14+050	LHS	100.00	LPAI Boundary wall and Gate	Earth Work	
14	14+150	14+200	BHS	50.00	ICP-BSF Gate	Minor Bridge	
15	14+240	14+250	RHS	10.00	ICP-BSF Vehicles Scanning Machine	Earth Work	
Total Hindered Length				2180.00			

4-L of NH 37 from design Ch 0+020 on NH-8 near Karimganj to design Chainage 14+380 near Sutarkandi (Spur Connectivity to Indo/Bangladesh Border) Silchar-Churaibari Pkg-7 in the State of Assam on HAM mode.

Current Issues:-

- a) **Non-availability of land:-** As per the Concession Agreement, 100% of the land is to be handed over to the Concessionaire within 90 days from the Appointed Date. However, only approximately 80.20% of the land is currently free from encumbrances (refer the Concessionaire's letter no. MKCIL/ASSAM/PKG-07/490 dated 29.11.2025)

As per Joint Handover Memorandum (Appendix-I) dated 28.02.2025

SUMMARY OF LAND ACQUISITION & CLEARANCES

Sl. No	Total Land Required (in Ha)	Available Land (in Ha)	Remaining Land (In Ha)	% Available Land	Hindrance free length (in Km)	% Available hindrance free length %
1	63.59	56.17	7.42	88.33%	11.510 Km	80.20%

Note: The hindrance free length is calculated based on the right of way required against construction zone. M/s MKC Badarpur Churaibari Kamakhya (Pkg-7) Highways Pvt. Ltd will not claim any damages from the Authority as specified in CI 4.2 of Concession Agreement for the period delay and time extension in accordance with CI 4.1.2 of Concession Agreement.

Authorized Representative:



M/s MKC Badarpur Churaibari Kamakhya (Pkg-7) Highways Pvt. Ltd.

General Manager(P)

Signature
General Manager (P)
NHIDCL PMU-Karimganj
PMU-Karimganj Assam
NHIDCL

Date: 28/02/25

Place: Karimganj

- b) Water logging in PROW :-** Due to heavy rainfall, water has accumulated along almost the entire length of the project within the ROW, which has hampered construction activities.
- c) Approval of Material Source:-** Approval from the Independent Engineer is still pending for the proposed material sources, and admixtures (refer the Concessionaire's Chapter no._10 & Table no 10.3.4)
- d) Existing Road Maintainance:** One time tender flotating decision for maintenance of the existing road is pending by the end of the Authority.

The Concessionaire has submitted its concern regarding the deteriorated condition of the existing road and clarified that it has only a limited scope of work, which includes only pothole repairs. During the meeting held at HQ, NHIDCL, New Delhi under the chairmanship of the MD (NHIDCL), this issue was acknowledged by the Hon'ble MD (NHIDCL), who directed the PMU and RO to float a one-time tender for the maintenance of the existing road.

- e) Non-Permission from PWD Authorities:** - The Concessinaire has submit it concern regaiding the permission for using the PWD rural roads for carrying of forest materials under Bharat Mala Project vide letter no. MKCIL/ASSAM/PKG-07/176 dated 24.04.2025.

It is essential to transport forest materials such as aggregates, soil, sand, and other construction materials from the designated quarry and borrow areas to the project site.

These materials are to be transported through certain PWD rural roads, as these routes form the only available access between the material sources and the construction stretch.

However, the Karimganj PWD Divisional Officer has restricted the movement of construction vehicles carrying these materials through the said rural roads, which has caused a significant hindrance to the ongoing project works and may adversely affect the overall project timeline.

CHAPTER-1

INTRODUCTION

General

The NHIDCL proposes to implement the development, maintenance, and management of the Spur from NH-8 near Karimganj to Sutarkandi (India-Bangladesh border) Km. 0.020 to Km. 14.380 into 4-lane access controlled corridor. The proposed project road has been selected to improve connectivity and reduce travel time from Assam to Tripura. Also, this connectivity will improve international road connectivity between India and Bangladesh. To achieve the above task, NHIDCL has appointed M/s. Aarvee Associates Architects Engineers and Consultants Pvt. Ltd. The Letter of Awarded was communicated vide letter No. NHIDCL / Assam / DPR / Silchar-Churaibari /222542/2581 and the agreement was signed on September 1st, 2023.

This executive summary is submitted along with the Final detailed project report to cover the key aspects of the project.

Project Overview

As described earlier the project road is a spur to NH-8 near Karimganj and ends at Sutarkandi. The proposed alignment passes through Karimganj district in the state of Assam connecting villages Karimganj, Fakirabazar, Jarpata and Sutarkandi.

4-L of NH 37 from design Ch 0+020 on NH-8 near Karimganj to design Chainage 14+380 near Sutarkandi (Spur Connectivity to Indo/Bangladesh Border) Silchar-Churaibari Pkg-7 in the State of Assam on HAM mode.

CHAPTER-2

CONTRACT DATA

Sr. No.	Items	Description
1.	Name of Project	4-L of NH 37 from design Ch 0+020 on NH-8 near Karimganj to design Chainage 14+380 near Sutarkandi (Spur Connectivity to Indo/Bangladesh Border) Silchar-Churaibari Pkg-7 in the State of Assam on HAM mode.
2.	Project Length	14.360 km
3.	Project Bid Cost	380.26 Cr.
4.	Authority	National Highways & Infrastructure Development Corporation Limited
5.	Independent Engineer	M/s Technocrats Advisory Services Private Limited in association with M/s MAV Associates LLP
6.	Concessionaire	MKC Badarpur Churaibari Kamakhya (PKG-7) Highways Private Limited
7.	Design Consultant	Geo Designs & Research Pvt. Ltd.
8.	DPR Consultant	Aarvee Associates Architects Engineers & Consultants Pvt. Ltd.
9.	LOA No. & Date	NHIDCL/ Assam/ NH-37/ Sil-Churai/ Pkg-VII/ 233357/ 3087 dated 11.03.2024
10.	Date of Concession Agreement	September 17, 2024
11.	Appointed Date	February 28, 2025
12.	Construction Period	730 days (from Appointed Date) [24-Months]
13.	Schedule Completion Date	February 27, 2027
14.	O&M Period	15 Years from the date of COD

4-L of NH 37 from design Ch 0+020 on NH-8 near Karimganj to design Chainage 14+380 near Sutarkandi (Spur Connectivity to Indo/Bangladesh Border) Silchar-Churaibari Pkg-7 in the State of Assam on HAM mode.

15.	Project Milestone	
	Milestone- I	<p>The Project Milestone-I shall occur on the date falling on the 256th (two hundred and fifty sixth) day from the Appointed Date (i.e., November 11, 2025)-</p> <p>(The concessionaire shall have expended not less than 20% of the total capital cost set forth in the Financial Package and the Concessionaire shall have commenced construction of the Project and achieved 20% Physical Progress)</p>
	Milestone- II	<p>438th Day from Appointed Date (i.e., May 12, 2026)- (Prior to the occurrence of Project Milestone-II, the Concessionaire shall have expended not less than 35% of the total capital cost set forth in the Financial Package. Provided, however, that at least 70% of the expenditure referred to hereinabove shall have been incurred on physical works which shall not include advances of any kind to any person or expenditure of any kind on plant and plannery and the concessionaire shall have commenced construction of the project and achieved 35% Physical Progress.).</p>
	Milestone- III	<p>620th Day from Appointed Date (i.e., November 10, 2026) (The concessionaire shall have commenced construction of all Project Facilities and expended not less than 75% of the total capital cost set forth in the Financial Package and the concessionaire shall have commenced construction of the Project and achieved 75% Physical Progress).</p>
	Scheduled Completion Date	<p>730th Day from Appointed Date (i.e., February 27, 2027)</p> <p>The concessionaire shall have completed the Project in accordance with the Concession Agreement.</p>

4-L of NH 37 from design Ch 0+020 on NH-8 near Karimganj to design Chainage 14+380 near Sutarkandi (Spur Connectivity to Indo/Bangladesh Border) Silchar-Churaibari Pkg-7 in the State of Assam on HAM mode.

CHAPTER -3

SALIENT FEATURES OF PROJECT HIGHWAY

3.1 Pavement Composition (For Main Carriage Way/ Service Road)

Section	Design Chainage		Stretch in Km.	Pavement Composition in mm.						
	From	To		Sub-Grade	R-GSB	R-WMM	DBM	BC	DLC	PQC
MCW	00+020	12+900	12.880	500.00	200.00	190.00	50.00	30.00	-	-
	12+900	14+380	1.480	500.00	150.00	-	-	-	150.00	180.00
				Sub-Grade	GSB	R-WMM	BC	-		
Service Road				500.00	200.00	185.00	30.00	-		

3.2 Details of New/ Widening of Structures and Project Facilities to be constructed along the project Highway:

Sr. No.	Description		Unit	As per CA	Remarks
1.	Railway over Bridge	New Construction	Nos.	1	
2.	Major Bridge	New Construction	Nos.	3	
3.	Minor Bridge	New Construction	Nos.	7	
		Reconstruction	Nos.	1	
4.	VUP	New Construction	Nos.	2	
5.	LVUP	New Construction	Nos.	9	
6.	SVUP	New Construction	Nos.	1	
7.	Box Underpass	New Construction	Nos.	4	
8.	Box Culvert	New Construction	Nos.	28	
		Reconstruction	Nos.	4	
		Additional	Nos.	20	
9.	Pipe Culvert	Additional	Nos.	20	
10.	Bus Bay		Nos.	2	
11.	Major Junction		Nos.	2	
12.	Minor Junction		Nos.	4	
13.	W-beam Single faced metal crash barrier		Rmt.	17602	
14.	Drain (covered)		Rmt.	2960	

CHAPTER -4

SCOPE OF THE WORKS AND PROJECT FACILITIES

4.1 Scope of Works

The Schedule-B of the Concession Agreement specifies the scope of works. The broad scope of the works includes the following:

- Reconstruction of existing 2 lane carriageway to 4 lane divided carriageway including strengthening existing carriageway by providing bituminous overlays in accordance with the Specifications and Standards.
- Construction of 1- ROB, 3- Major Bridge, 8- Minor Bridge, 16- Underpasses, 52- Culverts.
- Construction of Slip Road of 4.16 Km

4.2 Project Facilities

The Schedule-C of the Concession Agreement specifies the project facilities to be constructed for the project highway. The project facilities include the following:

- a) Roadside Furniture**
 - i. Kilometer and Hectometer Stones
 - ii. Traffic Signs
 - iii. Overhead Sign
 - iv. Road Marking
 - v. Road Delineators
 - vi. Reflective Pavement Markers & Solar Studs
 - vii. Traffic Impact Attenuators
 - viii. Boundary wall and Fencing
- b) Operation and Maintenance centres**
- c) Way side Amenities/ Service Areas**
- d) Bus Bay and Bus Shelter**
- e) Pedestrian Facilities**
- f) Highway Lighting**
- g) Rainwater Harvesting**
- h) Environmental Management Plan**
- i) Advanced Traffic Management System (ATMS)**
- j) Highway Petrol Unit**
- k) Emergency Medical Services**
- l) Crane Services**

4-L of NH 37 from design Ch 0+020 on NH-8 near Karimganj to design Chainage 14+380 near Sutarkandi (Spur Connectivity to Indo/Bangladesh Border) Silchar-Churaibari Pkg-7 in the State of Assam on HAM mode.

CHAPTER -5

PRE-CONSTRUCTION ACTIVITIES

5.1 Obligations

Obligations of Authority-

Sr. No.	Clause No.	Obligation	Status	Remark/ Reference
1	Clause 4.1.2	Condition Precedent	Done	MKCIL/ASSAM/PKG-07/261
2	Article 11	Utilities, Associated Roads and Trees	In Progress	
3	Clause 18.1.2	Safety Consultant	Awaited	
4	Article 21	Appointment of Independent Engineer	Done	Partially Mobilized
5	Clause 10.3	Joint Memorandum	Done	

Obligations of Concessionaire-

Sr. No.	Clause No.	Obligation	Status	Remark/ Reference
1	Clause 9.1	Performance Security	Submitted	
2	Article 11	Shifting and Relocation Electrical Utilities	In Progress	
3	Article 26	Insurance	Done	
4	Clause 4.1.3 (Schedule-E)	Applicable Permits	Done	
5		A permission of State Govt. for boulders extraction	Done	
6		Permission of Village Panchayet and Pollution Board for installation of crushers	Done	
7		License for use of explosives	Done	
8		Permission of the State Govt. from drawing water from river/ reservoir	Done	
9		Labour Licence	Done	
10	Clause 12.1	Quality Assurance Plan	Submitted	MKCIL/ASSAM/PKG-07/139 dt. 07.04.2025
11		Construction Methodology	Submitted	MKCIL/ASSAM/PKG-07/150 dt. 14.04.2025

4-L of NH 37 from design Ch 0+020 on NH-8 near Karimganj to design Chainage 14+380 near Sutarkandi (Spur Connectivity to Indo/Bangladesh Border) Silchar-Churaibari Pkg-7 in the State of Assam on HAM mode.

5.2 Shifting of Utilities

The project works includes shifting/relocation of various utility services along the project road. The details of the utilities/ Hindrances are required to be shifted/ relocated/ removed along the Project Highway is summarized below:

Sl. No.	Utility/ Hindrance Type	Unit	Nos.	Remarks
1.	HT/LT Lines (including Transformer if any)	Kms	4.36	In progress
2.	HT/ LT crossing	Nos.	65.00	In progress
3.	Water Pipelines	Kms	4.65	In progress
4.	Water Pipeline Crossing	Nos.	14.00	In progress

5.3 Tree Cutting

The tree cutting status is given below for the project highway.

Sr. No.	Description	Total	Remarks
1.	Total Number of Trees	407.00	
2.	Total Felling of Trees	100.00	
3.	Balance Trees	307.00	

5.4 Land Acquisition

As appended above in executive summary, Serial no. 13.

4-L of NH 37 from design Ch 0+020 on NH-8 near Karimganj to design Chainage 14+380 near Sutarkandi (Spur Connectivity to Indo/Bangladesh Border) Silchar-Churaibari Pkg-7 in the State of Assam on HAM mode.

CHAPTER -6

MOBILIZATION

6.1 Manpower Mobilization of Concessionaire

Sr. No.	Name of Employee	Designation	Department
1	Satish Kumar Pandey	Sr. GM	HQ
2	Manoj Kumar Singh	Sr. Project Manager	Project
3	Vinay Kumar Pandey	Project Manager	Project
4	Dhirendra Thapa	Asst. Manager	HR/Admin
5	Tupidhar Das	Sr. Executive	HR/Admin
6	Manish Kumar Dixit	Executive	HR/Admin
7	Golu Meena	Supervisor (Mess)	HR/Admin
8	Ramesh Sharma	Project Manager	Liaison
9	Shyam babu Singh	Manager	Liaison
10	Sahil Singh	Sr. Executive	Liaison
11	Ritu Raj Gop	Sr. Engineer	Billing & Planning
12	Sudheer Raturi	Sr. Engineer	Billing & Planning
13	Shubham Kumar	Engineer	Billing & Planning
14	Santosh Singh	Dy. Manager	Structure
15	Vageesh Tripathi	Senior Engineer	Structure
16	Ranjan Kumar	Senior Engineer	Structure
17	Jitendra Gupta	Senior Engineer	Structure
18	Rakesh Kumar Singh	Senior Engineer	Structure
19	Souvik Paul	Engineer	Structure
20	Deepak Chauhan	Engineer	Structure
21	Amit Kumar	Engineer	Structure
22	Ankit Patel	GET	Structure
23	Sujit Kumar Ray	Sr. Supervisor	Structure
24	Ankit Chaurasia	Supervisor	Structure
25	Narayan Kumar	Supervisor	Structure
26	Ankit Solanki	Supervisor	Structure
27	Avneesh Kumar Pandey	Dy. Manager	Highway
28	Alok Kumar Choudhary	Dy. Manager	Highway
29	Janmejey Kar	Asst. Manager	Highway
30	Vishal Mishra	Asst. Manager	Highway
31	Samarjeet Singh	Engineer	Highway
32	Rishab Pal	Senior Engineer	Highway
33	Tapas Basak	Engineer	Highway
34	Arya Yadav	Engineer	Highway
35	Subhash Kumar	Jr. Engineer	Highway
36	Jay Prakash Singh	Senior Supervisor	Highway
37	Md. Mohbub Ahmed	Supervisor	Highway
38	Ratan Thakur	Supervisor	Highway
39	Krishna Singh	Supervisor	Highway
40	Chandrakant	Supervisor	Highway
41	Mohit Kumar	Supervisor	Highway
42	Ashish Koley	Dy. Manager	Survey
43	Anish Ghosh	Asst. Manager	Survey
44	Jayanta Mallick	Sr. Surveyor	Survey
45	Koushik Rout	Sr. Surveyor	Survey
46	Ram Poojan	Surveyor	Survey

4-L of NH 37 from design Ch 0+020 on NH-8 near Karimganj to design Chainage 14+380 near Sutarkandi (Spur Connectivity to Indo/Bangladesh Border) Silchar-Churaibari Pkg-7 in the State of Assam on HAM mode.

47	Amit Singh	Surveyor	Survey
48	Jaibhan Pratap Paswan	Surveyor	Survey
49	Subrata Dinda	Sr. Manager	P & M
50	Amit Bhaduria	Executive	P & M
51	Ramkaran Sahu	Engineer	P & M
52	Deepak Thakur	Executive	P & M
53	Indrajit Majumder	Supervisor	P & M
54	Prabhakar Kumar	Jr. Engineer	P & M
55	Joy Kanoo	Supervisor	P & M
56	Chandan Dash	Sr. Manager	Store
57	Amit Sikarwar	Sr. Executive	Store
58	Deepak Purty	Jr. Executive	Store
59	Subham Bhattacharjee	Supervisor	Store
60	Sujeet Sharma	Supervisor	Store
61	Sumanta Datta	Supervisor	Store
62	Milan Samanta	Supervisor	Store
63	Ravi Shankar Tripathi	Sr. Manager	QA/QC
64	Vinay Kumar Tripathi	Manager	QA/QC
65	Ranjan Kumar	Engineer	QA/QC
66	Sujay De Sarkar	Engineer	QA/QC
67	Subham Singh	Asst. Engineer	QA/QC
68	Daya Shankar	Lab Tech.	QA/QC
69	Ramprakash Mishra	Lab Tech.	QA/QC
70	Karan Kumar	Lab Tech.	QA/QC
71	Amit Pathak	Lab Tech.	QA/QC
72	Robin Chouhan	Lab Tech.	QA/QC
73	Sagar Jena	Engineer	Electrical
74	Pankaj Baser	Jr. Engineer	Electrical
75	Gaijianpou Gonmi	Asst. Manager	Accounts

4-L of NH 37 from design Ch 0+020 on NH-8 near Karimganj to design Chainage 14+380 near Sutarkandi (Spur Connectivity to Indo/Bangladesh Border) Silchar-Churaibari Pkg-7 in the State of Assam on HAM mode.

CHAPTER-7

DEPLOYMENT OF PLANTS AND EQUIPMENT / PROJECT SET UP PLAN

7.1 Plants and Equipment Deployed

S.no	Equipment type	UNIT	QTY	Remarks
1	LMV	Nos.	18	
2	TIPPER	Nos.	28	
3	MOBILE CRANE	Nos.	4	
4	SOIL COMPACTOR	Nos.	10	
5	EXCAVATOR	Nos.	08	
6	BACK HOE LOADER	Nos.	05	
7	DIESEL DISPENCER	Nos.	2	
8	TRANSIT MIXER	Nos.	12	
9	TRACTOR	Nos.	2	
10	GRADER	Nos.	3	
11	BABY ROLLER	Nos.	1	
12	HM PLANT	Nos.	1	
13	BATCHING PLANT	Nos.	2	
14	RE BLOCK PLANT	Nos.	1	
15	DG	Nos.	13	
16	TRAILER	Nos.	3	
17	CRUSHER	Nos.	1	
18	WATER TANKER	Nos.	04	
19	LOADER	Nos.	1	
20	BOOM PLACER	Nos	01	

4-L of NH 37 from design Ch 0+020 on NH-8 near Karimganj to design Chainage 14+380 near Sutarkandi (Spur Connectivity to Indo/Bangladesh Border) Silchar-Churaibari Pkg-7 in the State of Assam on HAM mode.

CHAPTER-8

DESIGN AND DRAWING

The project highway has been designed for four lane divided carriageway facility with provision of central raised median of 1.6m. The Concession Agreement envisages design of the project highway by the Concessionaire. The scope of design includes the design for road works, structure works and other project facilities. The drawings need to be prepared and approved for execution of each component of the project highway.

8.1 Design

The design of road works e.g., plans and profiles, cross sections and other miscellaneous items are being prepared by the Concessionaire for approval and execution of works accordingly. Similarly, the design of various structures e.g., Major bridge, Minor bridges, Vehicular Underpasses, Box Culverts, Hume Pipe Culverts etc. are also being prepared by the Concessionaire for review by Authority/ IE.

8.2 Drawings

As per requirement of the Contract Agreement various drawings are being prepared for execution and completion of the works. The working drawings of road works and structure works are being prepared by the Concessionaire and submitted to the Authority/ Independent Engineer prior to execution of works at site.

8.3 Status of Approval of Drawings

The status of drawing submission and approval of GAD for road and structure works as on November-30, 2025, is enclosed in this chapter of the report.

Road Works

S N	Description	Unit	Total	Submitted	Approval	Balance	Remarks
1.	Plan & Profile MCW	Km	14.360	14.360	2.380	12.000	
2.	Plan & Profile SR	Km	4.164	4.164	0.000	0.000	
3.	Typical Cross Section	Nos	1.00	1.00	0.00	0.00	
4.	Pavement Design Report	Nos	1.00	1.00	1.00	0.00	
5.	RE Wall	Nos	20820.00	-	-	-	
6.	Major Junction	Nos	2.00	-	-	-	
7.	Minor Junction	Nos	4.00	-	-	-	
8.	Bus Bay Drawing	Nos	2.00	-	-	-	
9.	Road Signage Plan	Km	14.360	-	-	-	

4-L of NH 37 from design Ch 0+020 on NH-8 near Karimganj to design Chainage 14+380 near Sutarkandi (Spur Connectivity to Indo/Bangladesh Border) Silchar-Churaibari Pkg-7 in the State of Assam on HAM mode.

Structure Works:-

Structure				
Description	Total Nos	Submitted	Approved	Balance
Box Underpass	4	4	4	0.00
SVUP	1	1	0	1.00
LVUP	9	8	8	1.00
VUP	2	2	0	2.00
MNB	8	7	5	2.00
MJB	3	3	1	2.00
ROB	1	1	1	0.00
Box Culvert	32	30	25	5.00

**4-L of NH 37 from design Ch 0+020 on NH-8 near Karimganj to design Chainage 14+380 near Sutarkandi (Spur Connectivity to Indo/Bangladesh Border)
Silchar-Churaibari Pkg-7 in the State of Assam on HAM mode.**

CHAPTER-9

PROJECT WORK PROGRESS

Project Name :-	Four Laning of Karimganj - Sutarkandi section of NH-37 from Design chainage 0.020 (Assam-Agartala Road NH-8 near Kanisail Pt II) to Km. 14.380 (Sutarkandi, India-Bangladesh Border) in the state of Assam (Package-7)						
Authority Engineer :-	National Highways & Infrastructure Development Corporation Limited						
Independent Engineer :-	M/s Technocrats Advisory Services Pvt. Ltd. in association with M/s MAV Associates LLP						
Concessionaire :-	MKC Badarpur Churaibari Kamakhya (PKG-7) Highways Pvt. Ltd.						
Total Contract Price :-	3,80,26,00,000						
Schedule-G							
Item	Stage for measurement of Physical Progress	Unit	Qty.	Weightage in percentage to the contract price	Physical Progress	% of Physical Progress	Value of Physical Progress
Road works including culverts, minor bridges, underpasses, overpasses, approaches to ROB/RUB/ Major Bridges/ Structures (but excluding service roads)	A- Widening and strengthening of existing road						
	(1) Earthwork upto top of Sub-grade	L-Km	3.27	0.46%	1.00	30.59%	0.14%
	(2) Granular work (Sub-base, base,shoulder)						
	(a) GSB	L-Km	3.27	0.43%	1.00	30.59%	0.13%
	(b) WMM	L-Km	0.34	0.03%			
	(3) Shoulders	L-Km	0.34	0.01%			
	(4) Bituminous Work						
	(a) DBM	L-Km	0.34	0.06%			
	(b) BC	L-Km	0.34	0.02%			
	(5) Rigid Pavement						
	Concrete Work	L-Km	2.93	1.55%			
	B- New 4 Lane Realignment/Bypass						
	(1) Earthwork upto top of Sub-grade	L-Km	23.77	26.87%	1.30	5.47%	1.47%
	(2) Granular work (Sub-base, base,shoulder)						
	(a) GSB	L-Km	23.77	4.07%			
	(b) WMM	L-Km	23.77	2.76%			
	(3) Shoulder	L-Km	23.77	0.67%			
	(4) Bituminous Work						
	(a) DBM	L-Km	23.77	1.78%			
	(b) BC	L-Km	23.77	1.15%			
	C- New Culverts, Minor Bridges, underpasses, overpasses on existing road, realignment, bypasses:						
	1) Culverts	No.	64.00	4.55%	21.00	32.81%	1.49%
	2) Minor Bridge						
	a) Foundation	No.	22.00	2.76%	8.00	36.36%	1.00%
	b) Sub-Structure	No.	22.00	1.27%	2.00	9.09%	0.12%

**4-L of NH 37 from design Ch 0+020 on NH-8 near Karimganj to design Chainage 14+380 near Sutarkandi (Spur Connectivity to Indo/Bangladesh Border)
Silchar-Churaibari Pkg-7 in the State of Assam on HAM mode.**

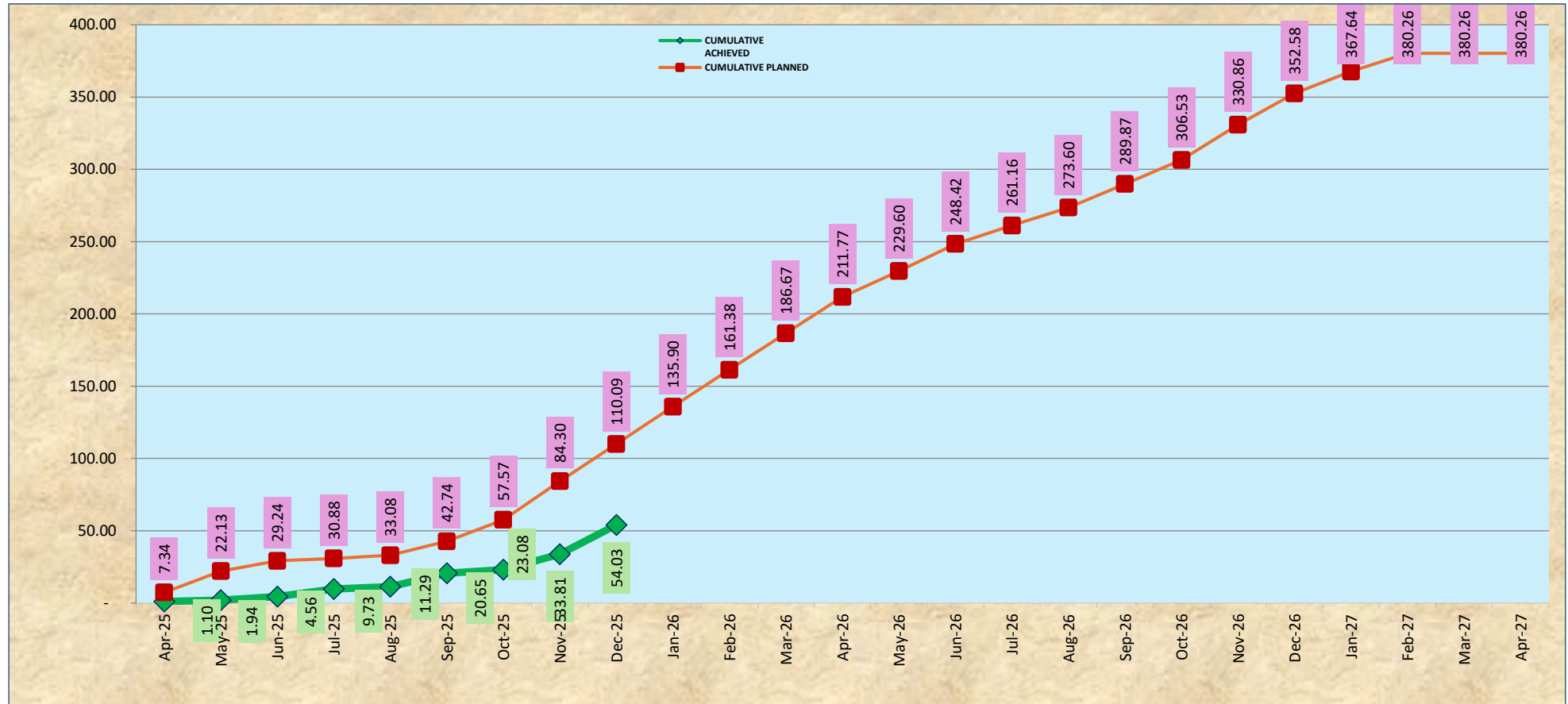
	c) Super-Structure (including Crash Barrier etc. Complete) If pre-cast girders/ segments are used, 40% of the weightage of the stage in percentage to the bid project cost is assigned to the casting of such precast girders/ segments.					
	c-i) Precast Girder - On Casting (40%)	No.	6.00	0.72%		
	c-ii) Slab - after Completion of Slab (60%)	No.	16.00	1.07%	2.00	12.50% 0.13%
	5) Grade Separated Structures					
	a) Underpasses (Box Underpass, SVUP, LVUP, VUP)					
	i) Foundation	No.	38.00	5.31%	20.00	52.63% 2.79%
	ii) Sub-Structure	No.	38.00	3.61%	16.00	42.11% 1.52%
	iii) Super-Structure (including Crash Barrier, Wearing coat etc. Complete) If pre-cast girders/ segments are used, 40% of the weightage of the stage in percentage to the bid project cost is assigned to the casting of such precast girders/ segments.					
	- Girder Type - Precast Girder (40%)	No.	6.00	1.41%		
	c-ii) Slab - after Completion of Slab (60%)	No.	32.00	2.12%	12.00	37.50% 0.79%
Major Bridge works and ROB/RUB	C- New Major Bridges					
	(1) Foundation					
	(b) Pile Foundation / Well Foundation	No.	24.00	5.91%	6.00	25.00% 1.48%
	(2) Sub-structure	No.	24.00	1.61%		
	(3) Super-structure (including crash barriers etc. complete) If pre-cast girders/ segments are used, 40% of the weightage of the stage in percentage to the bid project cost is assigned to the casting of such precast girders/ segments.					
	-Super-structure - Precast Girder (40%)	No.	18.00	1.09%	2.00	11.11% 0.12%
	c-ii) Slab - after Completion of Slab (60%)	No.	18.00	1.64%		
	D- New rail-road bridges					
	(a) ROB					
	(1) Foundation	No.	10.00	2.50%	2.00	20.00% 0.50%
	(2) Sub-structure	No.	10.00	1.06%		
	(3) Super-structure (including crash barriers etc. complete) If pre-cast girders/ segments are used, 40% of the weightage of the stage in percentage to the bid project cost is assigned to the casting of such precast girders/ segments.					
	-Super-structure - Precast Girder (40%)	No.	8.00	0.90%		
	c-ii) Slab - after Completion of Slab (60%)	No.	8.00	1.34%		

**4-L of NH 37 from design Ch 0+020 on NH-8 near Karimganj to design Chainage 14+380 near Sutarkandi (Spur Connectivity to Indo/Bangladesh Border)
Silchar-Churaibari Pkg-7 in the State of Assam on HAM mode.**

Structures (Elevated Section, Reinforced earth)	4) Reinforced Earth Wall (includes Approaches of ROB, Underpasses, Over passes, Flyover etc.)						
	i) Re Block Casting (5%)	Sq.m	24,984.00	0.03%	7,782.08	31.15%	0.01%
	ii) Re Block Erection (95%)	Sq.m	24,984.00	0.63%			
Electrical and Public Health Utilities	UTILITY SHIFTING						
	HT/LT lines (including Transformers if any)	Km	4.36	0.04%			
	HT/LT crossings	No.	65.00	1.03%			
	Water pipeline	Km	4.65	0.03%	3.50	75.27%	0.02%
	Water pipeline crossings	No.	14.00	0.06%	10.00	71.43%	0.04%
Other Works	OTHER WORKS						
	i) Service Road / Slip Road	L-Km	4.164	1.78%			
	iii) Road Side Drain	L-Km	2.96	0.44%	0.50	16.89%	0.07%
	iv) - Road signs, markings, Km Stone, Safety devices						
	(a) Road signs, markings, Km Stone	L-Km	14.36	0.30%			
	(b) Concrete Crash Barrier/W Beam Crash Barrier in Road work	L-Km	30.96	2.42%			
	v) - Project Facilities						
	(a) Bus bay	No.	2.00	0.08%			
	viii) Protection Work						
	(a) Boulder Pitching on Slope / Slope Protection Work	L-Km	4.32	2.32%			
	(b) Precast Toe Wall / Retaining Wall	L-Km	13.81	10.94%	3.00	21.72%	2.38%
	x) Miscellaneous						
	(a) Street Lightning	No.	188.00	0.09%			
	(b) Junction/Interchange	No.	6.00	0.18%			
	(c) Precast Boundary Wall	L-Km	27.04	0.42%			
	(d) ATMS, HTMS, Traffic Aid Posts, Medical aid Posts, Vehicle Recue Posts, Telecom System	L-Km	28.72	0.34%			
	(e) Rain Water Harvesting	No.	28.00	0.17%			
Grand Total >>>				100.00%			14.21%

4-L of NH 37 from design Ch 0+020 on NH-8 near Karimganj to design Chainage 14+380 near Sutarkandi (Spur Connectivity to Indo/Bangladesh Border)
Silchar-Churaibari Pkg-7 in the State of Assam on HAM mode.

9.2 S Curve

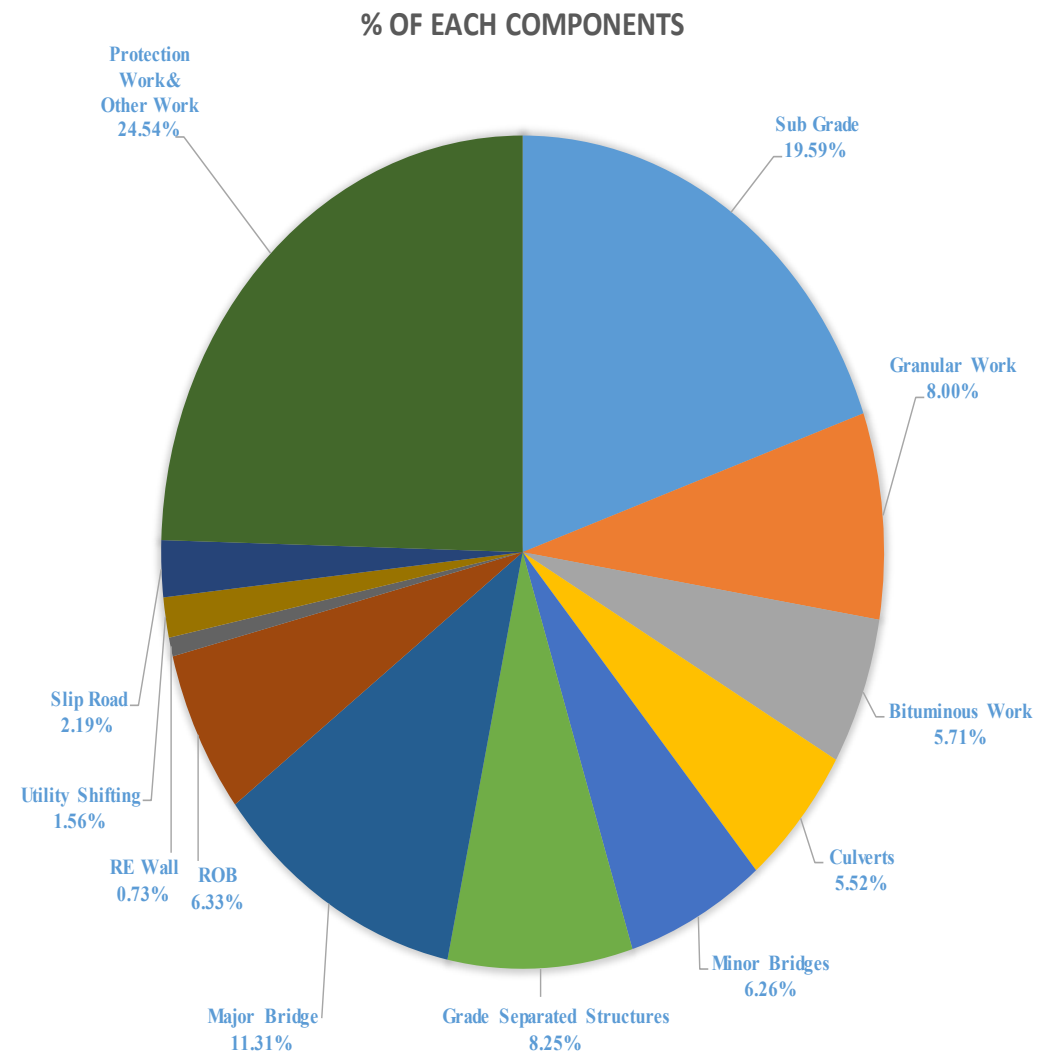


VALUES (IN CR.)	MONTH	1	2	3	4	5	6	7	8	9	10	11	12	13	14	15	16	17	18	19	20	21	22	23	24	25
	MONTH	Apr-25	May-25	Jun-25	Jul-25	Aug-25	Sep-25	Oct-25	Nov-25	Dec-25	Jan-26	Feb-26	Mar-26	Apr-26	May-26	Jun-26	Jul-26	Aug-26	Sep-26	Oct-26	Nov-26	Dec-26	Jan-27	Feb-27	Mar-27	Apr-27
	CUMULATIVE PLANNED	7.34	22.13	29.24	30.88	33.08	42.74	57.57	84.30	110.09	135.9	161.3	186.6	211.7	229.6	248.4	261.1	273.6	289.8	306.53	330.8	352.5	367.6	380.2	380.2	380.2
	CUMULATIVE ACHIEVED	1.10	1.94	4.56	9.73	11.29	20.65	23.08	33.81	54.03																
		0.29%	0.51%	1.20%	2.56%	2.97%	5.43%	6.07%	8.89%	14.21%																

**4-L of NH 37 from design Ch 0+020 on NH-8 near Karimganj to design Chainage 14+380 near Sutarkandi (Spur Connectivity to Indo/Bangladesh Border)
Silchar-Churaibari Pkg-7 in the State of Assam on HAM mode.**

9.3 Weightages (Earthwork, Granular Work, Bituminous Work, Culvert, MJB, MNB, Underpass, ROB, RE Wall, Utility Shifting, SR and Others)

Work Description	% of Each sub components	Amount (Cr.)
Sub Grade	19.59%	74,50,23,653.02
Granular Work	8.00%	30,43,19,594.30
Bituminous Work	5.71%	21,70,88,192.72
Culverts	5.52%	20,99,29,557.88
Minor Bridges	6.26%	23,80,73,489.15
Grade Separated Structures	8.25%	31,37,15,716.05
Major Bridge	11.31%	43,00,02,339.39
ROB	6.33%	24,07,16,649.18
RE Wall	0.73%	2,78,77,340.41
Utility Shifting	1.56%	5,92,90,359.01
Slip Road	2.19%	8,34,60,380.79
Protection Work& Other Work	24.54%	93,31,02,728.10
Total	100.00%	3,80,26,00,000.00



**4-L of NH 37 from design Ch 0+020 on NH-8 near Karimganj to design Chainage 14+380 near Sutarkandi (Spur Connectivity to Indo/Bangladesh Border)
Silchar-Churaibari Pkg-7 in the State of Assam on HAM mode.**

9.4 Highway Progress:-

[illegible]

4-L of NH 37 from design Ch 0+020 on NH-8 near Karimganj to design Chainage 14+380 near Sutarkandi (Spur Connectivity to Indo/Bangladesh Border)
Silchar-Churaibari Pkg-7 in the State of Assam on HAM mode.

RHS		LHS				
Chainage	BC	DBM	R-WMM	R-GSB	Sub-Grade	Embankment
	C&G	Embankment	Sub-Grade	R-GSB	R-WMM	DBM
3+030						
3+040						
3+050						
3+060						
3+070						
3+080						
3+090						
3+100						
3+110						
3+120						
3+130						
3+140						
3+150						
3+160						
3+170						
3+180						
3+190						
3+200						
3+210						
3+220						
3+230						
3+240						
3+250						
3+260						
3+270						
3+280						
3+290						
3+300						
3+310						
3+320						
3+330						
3+340						
3+350						
3+360						
3+370						
3+380						
3+390						
3+400						
3+410						
3+420						
3+430						
3+440						
3+450						
3+460						
3+470						
3+480						
3+490						
3+500						
3+510						
3+520						
3+530						
3+540						
3+550						
3+560						
3+570						
3+580						
3+590						
3+600						
3+610						
3+620						
3+630						
3+640						
3+650						
3+660						
3+670						
3+680						
3+690						
3+700						
3+710						
3+720						
3+730						
3+740						
3+750						
3+760						
3+770						
3+780						
3+790						
3+800						
3+810						
3+820						
3+830						
3+840						
3+850						
3+860						
3+870						
3+880						
3+890						
3+900						
3+910						
3+920						
3+930						
3+940						
3+950						
3+960						
3+970						
3+980						
3+990						
4+000						
4+010						
4+020						

RHS		LHS				
Chainage	BC	DBM	R-WMM	R-GSB	Sub-Grade	Embankment
	C&G	Embankment	Sub-Grade	R-GSB	R-WMM	DBM
4+030						
4+040						
4+050						
4+060						
4+070						
4+080						
4+090						
4+100						
4+110						
4+120						
4+130						
4+140						
4+150						
4+160						
4+170						
4+180						
4+190						
4+200						
4+210						
4+220						
4+230						
4+240						
4+250						
4+260						
4+270						
4+280						
4+290						
4+300						
4+310						
4+320						
4+330						
4+340						
4+350						
4+360						
4+370						
4+380						
4+390						
4+400						
4+410						
4+420						
4+430						
4+440						
4+450						
4+460						
4+470						
4+480						
4+490						
4+500						
4+510						
4+520						
4+530						
4+540						
4+550						
4+560						
4+570						
4+580						
4+590						
4+600						
4+610						
4+620						
4+630						
4+640						
4+650						
4+660						
4+670						
4+680						
4+690						
4+700						
4+710						
4+720						
4+730						
4+740						
4+750						
4+760						
4+770						
4+780						
4+790						
4+800						
4+810						
4+820						
4+830						
4+840						
4+850						
4+860						
4+870						
4+880						
4+890						
4+900						
4+910						
4+920						
4+930						
4+940						
4+950						
4+960						
4+970						
4+980						
4+990						
5+000						
5+010						
5+020						

RHS		LHS				
Chainage	BC	DBM	R-WMM	R-GSB	Sub-Grade	Embankment
	C&G	Embankment	Sub-Grade	R-GSB	R-WMM	DBM
5+030						
5+040						
5+050						
5+060						
5+070						
5+080						
5+090						
5+100						
5+110						
5+120						
5+130						
5+140						
5+150						
5+160						
5+170						
5+180						
5+190						
5+200						
5+210						
5+220						
5+230						
5+240						
5+250						
5+260						
5+270						
5+280						
5+290						
5+300						
5+310						
5+320						
5+330						
5+340						
5+350						
5+360						
5+370						
5+380						
5+390						
5+400						
5+410						
5+420						
5+430						
5+440						
5+450						
5+460						
5+470						
5+480						
5+490						
5+500						
5+510						
5+520						
5+530						
5+540						
5+550						
5+560						
5+570						
5+580						

**4-L of NH 37 from design Ch 0+020 on NH-8 near Karimganj to design Chainage 14+380 near Sutarkandi (Spur Connectivity to Indo/Bangladesh Border)
Silchar-Churaibari Pkg-7 in the State of Assam on HAM mode.**

RHS		LHS						RHS		LHS						RHS		LHS						RHS		LHS					
BC	DBM	R-WMM	R-GSB	Sub-Grade	Embankment	C&G	Chainage	BC	DBM	R-WMM	R-GSB	Sub-Grade	Embankment	C&G	Chainage	BC	DBM	R-WMM	R-GSB	Sub-Grade	Embankment	C&G	Chainage	BC	DBM	R-WMM	R-GSB	Sub-Grade	Embankment	C&G	Chainage
							8+030								7+030								7+030							6+030	
							8+040								7+040								7+040							6+040	
							8+050								7+050								7+050							6+050	
							8+060								7+060								7+060							6+060	
							8+070								7+070								7+070							6+070	
							8+080								7+080								7+080							6+080	
							8+090								7+090								7+090							6+090	
							8+100								7+100								7+100							6+100	
							8+110								7+110								7+110							6+110	
							8+120								7+120								7+120							6+120	
							8+130								7+130								7+130							6+130	
							8+140								7+140								7+140							6+140	
							8+150								7+150								7+150							6+150	
							8+160								7+160								7+160							6+160	
							8+170								7+170								7+170							6+170	
							8+180								7+180								7+180							6+180	
							8+190								7+190								7+190							6+190	
							8+200								7+200								7+200							6+200	
							8+210								7+210								7+210							6+210	
							8+220								7+220								7+220							6+220	
							8+230								7+230								7+230							6+230	
							8+240								7+240								7+240							6+240	
							8+250								7+250								7+250							6+250	
							8+260								7+260								7+260							6+260	
							8+270								7+270								7+270							6+270	
							8+280								7+280								7+280							6+280	
							8+290								7+290								7+290							6+290	
							8+300								7+300								7+300							6+300	
							8+310								7+310								7+310							6+310	
							8+320								7+320								7+320							6+320	
							8+330								7+330								7+330							6+330	
							8+340								7+340								7+340							6+340	
							8+350								7+350								7+350							6+350	
							8+360								7+360								7+360							6+360	
							8+370								7+370								7+370							6+370	
							8+380								7+380								7+380							6+380	
							8+390								7+390								7+390							6+390	
							8+400								7+400								7+400							6+400	
							8+410								7+410								7+410							6+410	
							8+420								7+420								7+420							6+420	
							8+430								7+430								7+430							6+430	
							8+440								7+440								7+440							6+440	
							8+450								7+450								7+450							6+450	
							8+460								7+460								7+460							6+460	
							8+470								7+470								7+470							6+470	
							8+480								7+480								7+480							6+480	
							8+490								7+490								7+490							6+490	
							8+500								7+500								7+500							6+500	
							8+510								7+510								7+510							6+510	
							8+520								7+520								7+520							6+520	
							8+530								7+530								7+530							6+530	
							8+540								7+540								7+540							6+540	
							8+550								7+550								7+550							6+550	
							8+560								7+560								7+560							6+560	
							8+570								7+570								7+570							6+570	
							8+580								7+580								7+580							6+580	
							8+590								7+590								7+590							6+590	
							8+600								7+600								7+600							6+600	
							8+610								7+610								7+610							6+610	
							8+620								7+620								7+620							6+620	
							8+630								7+630								7+630							6+630	
							8+640								7+640								7+640							6+640	
							8+650								7+650								7+650							6+650	
							8+660								7+660								7+660							6+660	
							8+670								7+670								7+670							6+670	
							8+680								7+680								7+680							6+680	
							8+690								7+690								7+690							6+690	
							8+700								7+700								7+700							6+700	
							8+710								7+710								7+710							6+710	
							8+720								7+720								7+720							6+720	
							8+730								7+730								7+730							6+730	
							8+740								7+740								7+740							6+740	
							8+750								7+750								7+750							6+750	
							8+760								7+760								7+760							6+760	
							8+770								7+770								7+770							6+770	
							8+780								7+780								7+780							6+780	
							8+790								7+790								7+790							6+790	
							8+800			</																					

**4-L of NH 37 from design Ch 0+020 on NH-8 near Karimganj to design Chainage 14+380 near Sutarkandi (Spur Connectivity to Indo/Bangladesh Border)
Silchar-Churaibari Pkg-7 in the State of Assam on HAM mode.**

RHS		LHS				
BC	DBM	R-WMM	R-GSB	Sub-Grade	Embankment	C&G
						11+030
						11+040
						11+050
						11+060
						11+070
						11+080
						11+090
						11+100
						11+110
						11+120
						11+130
						11+140
						11+150
						11+160
						11+170
						11+180
						11+190
						11+200
						11+210
						11+220
						11+230
						11+240
						11+250
						11+260
						11+270
						11+280
						11+290
						11+300
						11+310
						11+320
						11+330
						11+340
						11+350
						11+360
						11+370
						11+380
						11+390
						11+400
						11+410
						11+420
						11+430
						11+440
						11+450
						11+460
						11+470
						11+480
						11+490
						11+500
						11+510
						11+520
						11+530
						11+540
						11+550
						11+560
						11+570
						11+580
						11+590
						11+600
						11+610
						11+620
						11+630
						11+640
						11+650
						11+660
						11+670
						11+680
						11+690
						11+700
						11+710
						11+720
						11+730
						11+740
						11+750
						11+760
						11+770
						11+780
						11+790
						11+800
						11+810
						11+820
						11+830
						11+840
						11+850
						11+860
						11+870
						11+880
						11+890
						11+900
						11+910
						11+920
						11+930
						11+940
						11+950
						11+960
						11+970
						11+980
						11+990
						12+000
						12+010
						12+020

RHS		LHS				
BC	DBM	R-WMM	R-GSB	Sub-Grade	Embankment	C&G
						11+030
						11+040
						11+050
						11+060
						11+070
						11+080
						11+090
						11+100
						11+110
						11+120
						11+130
						11+140
						11+150
						11+160
						11+170
						11+180
						11+190
						11+200
						11+210
						11+220
						11+230
						11+240
						11+250
						11+260
						11+270
						11+280
						11+290
						11+300
						11+310
						11+320
						11+330
						11+340
						11+350
						11+360
						11+370
						11+380
						11+390
						11+400
						11+410
						11+420
						11+430
						11+440
						11+450
						11+460
						11+470
						11+480
						11+490
						11+500
						11+510
						11+520
						11+530
						11+540
						11+550
						11+560
						11+570
						11+580
						11+590
						11+600
						11+610
						11+620
						11+630
						11+640
						11+650
						11+660
						11+670
						11+680
						11+690
						11+700
						11+710
						11+720
						11+730
						11+740
						11+750
						11+760
						11+770
						11+780
						11+790
						11+800
						11+810
						11+820
						11+830
						11+840
						11+850
						11+860
						11+870
						11+880
						11+890
						11+900
						11+910
						11+920
						11+930
						11+940
						11+950
						11+960
						11+970
						11+980
						11+990
						12+000
						12+010
						12+020

RHS		LHS				
BC	DBM	R-WMM	R-GSB	Sub-Grade	Embankment	C&G
						11+030
						11+040
						11+050
						11+060
						11+070
						11+080
						11+090
						11+100
						11+110
						11+120
						11+130
						11+140
						11+150
						11+160
						11+170
						11+180
						11+190
						11+200
						11+210
						11+220
						11+230
						11+240
						11+250
						11+260
						11+270
						11+280
						11+290
						11+300
						11+310
						11+320
						11+330
						11+340
						11+350
						11+360
						11+370
						11+380
						11+390
						11+400
						11+410
						11+420
						11+430
						11+440
						11+450
						11+460
						11+470
						11+480
						11+490
						11+500
						11+510
						11+520
						11+530
						11+540
						</

**4-L of NH 37 from design Ch 0+020 on NH-8 near Karimganj to design Chainage 14+380 near Sutarkandi (Spur Connectivity to Indo/Bangladesh Border)
Silchar-Churaibari Pkg-7 in the State of Assam on HAM mode.**

RHS	Chainage	LHS					
		BC	DBM	R-WMM	R-GSB	Sub-Grade	Embankment
	14+030						
	14+040						
	14+050						
	14+060						
	14+070						
	14+080						
	14+090						
	14+100						
	14+110						
	14+120						
	14+130						
	14+140						
	14+150						
	14+160						
	14+170						
	14+180						
	14+190						
	14+200						
	14+210						
	14+220						
	14+230						
	14+240						
	14+250						
	14+260						
	14+270						
	14+280						
	14+290						
	14+300						
	14+310						
	14+320						
	14+330						
	14+340						
	14+350						
	14+360						
	14+370						
	14+380						
	14+390						
	14+400						
	14+410						
	14+420						
	14+430						
	14+440						
	14+450						
	14+460						
	14+470						
	14+480						
	14+490						
	14+500						
	14+510						
	14+520						
	14+530						
	14+540						
	14+550						
	14+560						
	14+570						
	14+580						
	14+590						
	14+600						
	14+610						
	14+620						
	14+630						
	14+640						
	14+650						
	14+660						
	14+670						
	14+680						
	14+690						
	14+700						
	14+710						
	14+720						
	14+730						
	14+740						
	14+750						
	14+760						
	14+770						
	14+780						
	14+790						
	14+800						
	14+810						
	14+820						
	14+830						
	14+840						
	14+850						
	14+860						
	14+870						
	14+880						
	14+890						
	14+900						
	14+910						
	14+920						
	14+930						
	14+940						
	14+950						
	14+960						
	14+970						
	14+980						
	14+990						
	14+000						
	14+010						
	14+020						

RHS	Chainage	LHS					
		BC	DBM	R-WMM	R-GSB	Sub-Grade	Embankment
	13+030						
	13+040						
	13+050						
	13+060						
	13+070						
	13+080						
	13+090						
	13+100						
	13+110						
	13+120						
	13+130						
	13+140						
	13+150						
	13+160						
	13+170						
	13+180						
	13+190						
	13+200						
	13+210						
	13+220						
	13+230						
	13+240						
	13+250						
	13+260						
	13+270						
	13+280						
	13+290						
	13+300						
	13+310						
	13+320						
	13+330						
	13+340						
	13+350						
	13+360						
	13+370						
	13+380						
	13+390						
	13+400						
	13+410						
	13+420						
	13+430						
	13+440						
	13+450						
	13+460						
	13+470						
	13+480						
	13+490						
	13+500						
	13+510						
	13+520						
	13+530						
	13+540						
	13+550						
	13+560						
	13+570						
	13+580						
	13+590						
	13+600						
	13+610						
	13+620						
	13+630						
	13+640						
	13+650						
	13+660						
	13+670						
	13+680						
	13+690						
	13+700						
	13+710						
	13+720						
	13+730						
	13+740						
	13+750						
	13+760						
	13+770						
	13+780						
	13+790						
	13+800						
	13+810						
	13+820						
	13+830						
	13+840						
	13+850						
	13+860						
	13+870						
	13+880						
	13+890						
	13+900						
	13+910						
	13+920						
	13+930						
	13+940						
	13+950						
	13+960						
	13+970						
	13+980						
	13+990						
	14+000						
	14+010						
	14+020						

RHS	Chainage	LHS					
		BC	DBM	R-WMM	R-GSB	Sub-Grade	Embankment
	14+030						
	14+040						
	14+050						
	14+060						
	14+070						
	14+080						
	14+090						
	14+100						
	14+110						
	14+120						
	14+130						
	14+140						
	14+150						
	14+160						
	14+170						
	14+180						
	14+190						
	14+200						
	14+210						
	14+220						
	14+230						
	14+240						
	14+250						

4-L of NH 37 from design Ch 0+020 on NH-8 near Karimganj to design Chainage 14+380 near Sutarkandi (Spur Connectivity to Indo/Bangladesh Border) Silchar-Churaibari Pkg-7 in the State of Assam on HAM mode.

9.5.1 Status of Box Culvert: -

SN	LHS											Box Culvert Chainage	RHS											
	Protection Work	Parapet Wall	Top Slab	Top Haunch	Wall Final Lift	Wall 2nd Lift	Wall 1st Lift	Haunch	Raft	PCC/Granular Bed	Layout & Excavation		Abutment	Layout & Excavation	PCC/Granular Bed	Raft	Haunch	Wall 1st Lift	Wall 2nd Lift	Wall Final Lift	Top Haunch	Top Slab	Parapet Wall	Protection Work
1												A1	00+043	A1										
												A2		A2										
2												A1	00+207	A1										
												A2		A2										
3												A1	00+341	A1										
												A2		A2										
4												A1	01+254	A1										
												A2		A2										
5												A1	01+652	A1										
												A2		A2										
6												A1	01+973	A1										
												A2		A2										
7												A1	02+143	A1										
												A2		A2										
8												A1	02+340	A1										
												A2		A2										
9												A1	02+440	A1										
												A2		A2										
10												A1	03+418	A1										
												A2		A2										
11												A1	03+646	A1										
												A2		A2										
12												A1	03+925	A1										
												A2		A2										
13												A1	04+018	A1										
												A2		A2										
14												A1	04+340	A1										
												A2		A2										
15												A1	04+534	A1										
												A2		A2										
16												A1	04+847	A1										
												A2		A2										
17												A1	05+126	A1										
												A2		A2										
18												A1	05+920	A1										
												A2		A2										
19												A1	06+190	A1										
												A2		A2										
20												A1	06+642	A1										
												A2		A2										
21												A1	07+668	A1										
												A2		A2										
22												A1	07+832	A1										
												A2		A2										
23												A1	07+906	A1										
												A2		A2										
24												A1	08+188	A1										
												A2		A2										
25												A1	08+926	A1										
												A2		A2										
26												A1	08+576	A1										
												A2		A2										
27												A1	09+543	A1										
												A2		A2										
28												A1	09+779	A1										
												A2		A2										
29												A1	10+529	A1										
												A2		A2										
30												A1	11+073	A1										
												A2		A2										
31												A1	11+921	A1										
												A2		A2										
32												A1	12+223	A1										
												A2		A2										
33												A1	12+663	A1										
												A2		A2										
34												A1	13+065	A1										
												A2		A2										
35												A1	13+380	A1										
												A2		A2										
36												A1	13+740	A1										
												A2		A2										

4-L of NH 37 from design Ch 0+020 on NH-8 near Karimganj to design Chainage 14+380 near Sutarkandi (Spur Connectivity to Indo/Bangladesh Border) Silchar-Churaibari Pkg-7 in the State of Assam on HAM mode.

9.5.2 Status of SVUP Culvert:

SN	LHS											SVUP Chainage	RHS												
	Protection Work	Parapet Wall	Top Slab	Top Haunch	Wall Final Lift	Wall 2nd Lift	Wall 1st Lift	Haunch	Raft	PCC/Granular Bed	Layout & Excavation		Abutment	Abutment	Layout & Excavation	PCC/Granular Bed	Raft	Haunch	Wall 1st Lift	Wall 2nd Lift	Wall Final Lift	Top Haunch	Top Slab	Parapet Wall	Protection Work
1												A1	03+728	A1											
												A2		A2											

9.5.3 Status of Minor Bridge: -

Sr.No	LHS												Minor BridgeChainage													
	Miscellaneous Item	Protection Work	Parapet Wall	Top Slab	Top Haunch	Wall Final Lift	Wall 2nd Lift	Wall 1st Lift	Haunch	Raft	PCC/Granular Bed	Layout & Excavation	Abutment	Abutment	Layout & Excavation	PCC/Granular Bed	Raft	Haunch	Wall 1st Lift	Wall 2nd Lift	Wall Final Lift	Top Haunch	Top Slab	Parapet Wall	Protection Work	Miscellaneous Item
1													A1	00+742	A1											
													A2		A2											
2													A1	01+768	A1											
													A2		A2											
3													A1	06+213	A1											
													A2		A2											
4													A1	07+306	A1											
													A2		A2											
5													A1	09+003	A1											
													A2		A2											
6													A1	09+293	A1											
													A2		A2											
7													A1	11+363	A1											
													A2		A2											
8													A1	14+195	A1											
													A2		A2											

9.5.3 Status of Major Bridge: -

SN	LHS												RHS												
	Miscellaneous Item	Crash Barrier	Approach Slab	Desk Slab	RCC Girder	Dirt Wall	Abutment Cap	Abutment Shaft	Abutment Pile Cap	Abutment Pile	Layout & Excavation	Abutment		Abutment	Layout & Excavation	Abutment Pile	Abutment Pile Cap	Abutment Shaft	Abutment Cap	Dirt Wall	RCC Girder	Desk Slab	Approach Slab	Crash Barrier	Miscellaneous Item
1												A1	00+526	A1											
												P1		P1											
												P2		P2											
												A2		A2											
2												A1	02+880	A1											
												P1		P1											
												P2		P2											
												A2		A2											
3												A1	05+322	A1											
												P1		P1											
												P2		P2											
												A2		A2											

1	Not Available	
2	In Progress	
3	Completed	

4-L of NH 37 from design Ch 0+020 on NH-8 near Karimganj to design Chainage 14+380 near Sutarkandi (Spur Connectivity to Indo/Bangladesh Border) Silchar-Churaibari Pkg-7 in the State of Assam on HAM mode.

9.5.4 Status of ROB:-

SN	LHS											RHS													
	Miscellaneous Item	Crash Barrier	Approach Slab	Desk Slab	RCC Girder	Dirt Wall	Abutment Cap	Abutment Shaft	Abutment Pile Cap	Abutment Pile	Layout & Excavation	Abutment		Layout & Excavation	Abutment Pile	Abutment Pile Cap	Abutment Shaft	Abutment Cap	Dirt Wall	RCC Girder	Desk Slab	Approach Slab	Crash Barrier	Miscellaneous Item	
1											A1	04+624	A1												
											A2		A2												

9.5.5 Status of Underpass:-

SN	LHS											Underpass Chainage	RHS												
	Protection Work	Parapet Wall	Top Slab	Top Haunch	Wall Final Lift	Wall 2nd Lift	Wall 1st Lift	Haunch	Raft	PCC/Granular Bed	Layout & Excavation		Abutment	Abutment	Layout & Excavation	PCC/Granular Bed	Raft	Haunch	Wall 1st Lift	Wall 2nd Lift	Wall Final Lift	Top Haunch	Top Slab	Parapet Wall	Protection Work
1												A1	1+142	A1											
												A2	LVUP	A2											
2												A1	3+886	A1											
												A2	LVUP	A2											
3												A1	4+212	A1											
												A2	LVUP	A2											
4												A1	5+414	A1											
												A2	LVUP	A2											
5												A1	7+213	A1											
												A2	LVUP	A2											
6												A1	9+332	A1											
												A2	LVUP	A2											
7												A1	10+098	A1											
												A2	LVUP	A2											
8												A1	10+834	A1											
												A2	LVUP	A2											
9												A1	12+310	A1											
												A2	LVUP	A2											
1												A1	03+728	A1											
												A2	SVUP	A2											
												A1	2+999	A1											
												A2	VUP	A2											
2												A1	5+622	A1											
												A2	VUP	A2											

SN	LHS											VUP Chainage	RHS											
	Miscellaneous Item	Crash Barrier	Approach Slab	Desk Slab	RCC Girder	Dirt Wall	Abutment Cap	Abutment Shaft	Abutment Pile Cap	Abutment Pile	Layout & Excavation		Abutment	Layout & Excavation	Abutment Pile	Abutment Pile Cap	Abutment Shaft	Abutment Cap	Dirt Wall	RCC Girder	Desk Slab	Approach Slab	Crash Barrier	Miscellaneous Item
1											A1	02+999	A1											
											A2		A2											
2											A1	05+622	A1											
											A2		A2											

CHAPTER-10

QUALITY CONTROL AND MATERIAL

10.1 Quality Control

The execution of works is mainly governed by the specified Technical Specifications for the project. The quality control of the works is required to be monitored on daily basis both at site and in the laboratory. Standard formats have been devised to control the required quality of the works. The Concessionaire Engineers are monitoring the required quality control works and maintaining the records accordingly for each item of works being executed.

10.2 Site Laboratory

The Site Laboratory is established at Base Camp located at CH: -5+600. All the required material tests are being conducted in the laboratory for the project road.

10.3 Materials Testing & Third Party Test

The testing to be carried out in the site laboratory includes tests of soil, aggregates, cement, steel, sand, embankment fill, sub grade, granular subbase and cement concrete. The details of test conducted up to 31 August, 2025 are enclosed.

10.3.1 Soil and Aggregates

The test reports for borrow area earth for available borrow area are approved & test reports for Aggregates are also approved for the available Quarry. Test reports for new borrow area earth are submitted to IE for approval.

10.3.2 Cement

The Concessionaire is using approved sources of Cement as Black Tiger (OPC 53 Grade), Dalmia Cement (OPC 53 Grade), Star Cement (OPC 53 Grade), Amrit Cement (OPC 53 Grade) & Max Cement (OPC 53 Grade) for the project work.

10.3.3 Reinforcement Steel

The Concessionaire is using approved sources of TMT from M/s Rashmi Metaliks Limited, M/s Shyam Steel Industries limited, M/s SRMB Srijan Private Limited, M/s Shyam Metalics and Energy Limited.

4-L of NH 37 from design Ch 0+020 on NH-8 near Karimganj to design Chainage 14+380 near Sutarkandi (Spur Connectivity to Indo/Bangladesh Border) Silchar-Churaibari Pkg-7 in the State of Assam on HAM mode.

10.3.4 Status of Materials Source approval

Cement				
Sr. No.	Brand Name	Letter No.	Status	IE Letter No.
1.	Black Tiger Cement	MKCIL/ASSAM/PKG-07/106 dt. 24.03.2025		
2.	Dalmia Cement	MKCIL/ASSAM/PKG-07/107 dt. 24.03.2025	Approved	TASPL-MAV/NH-37/MKCIL/2025/MAY/34
3.	Max Cement	MKCIL/ASSAM/PKG-07/108 dt. 24.03.2025		
4.	Star Cement	MKCIL/ASSAM/PKG-07/109 dt. 24.03.2025		
5.	Amrit Cement	MKCIL/ASSAM/PKG-07/110 dt. 24.03.2025		

Reinforcement Steel				
Sr. No.	Brand Name	Letter No.	Status	IE Letter No.
1.	Rashmi Metaliks Limited	MKCIL/ASSAM/PKG-07/111 dt. 24.03.2025	In-Principle Approved	TASPL-MAV/NH-37/MKCIL/2025/MAY/27
2.	Shyam Steel industries Ltd.	MKCIL/ASSAM/PKG-07/112 dt. 24.03.2025	In-Principle Approved	TASPL-MAV/NH-37/MKCIL/2025/MAY/26
3.	SRMB Srijan Pvt. Ltd.	MKCIL/ASSAM/PKG-07/113 dt. 24.03.2025	In-Principle Approved	TASPL-MAV/NH-37/MKCIL/2025/MAY/32
4.	Shyam Metalics & Energy Ltd.	MKCIL/ASSAM/PKG-07/132 dt. 04.04.2025	Approved	TASPL-MAV/NH-37/MKCIL/2025/MAY/16
5.	Elegant steel	MKCIL/ASSAM/PKG-07/167 dt. 19.04.2025	Approved	TASPL-MAV/NH-37/MKICL/2025/AUG/59

Admixture				
Sr. No.	Brand Name	Letter No.	Status	IE Letter No.
1.	Berger Paints Pvt. Ltd.	MKCIL/ASSAM/PKG-07/101 dt. 24.03.2025		
2.	CHRYSO India Pvt. Ltd	MKCIL/ASSAM/PKG-07/102 dt. 24.03.2025		
3.	CICO Technologies Ltd.	MKCIL/ASSAM/PKG-07/103 dt. 24.03.2025	Approved	TASPL-MAV/NH-37/MKICL/2025/SEPT/71
4.	FOSROC Chemicals (India) Ltd.	MKCIL/ASSAM/PKG-07/104 dt. 24.03.2025	Approved	TASPL-MAV/NH-37/MKICL/2025/SEPT/70
5.	Vista Chemtech Pvt. Ltd.	MKCIL/ASSAM/PKG-07/105 dt. 24.03.2025		
6.	Shyam Metalics & Energy Limited	MKCIL/ASSAM/PKG-07/132 Dt. 04.04.2025	Approved	TASPL-MAV/NH-37/MKCIL/2025/MAY/08
7.	STP Pvt Limited	MKCIL/ASSAM/PKG-07/491		
8.	TP	MKCIL/ASSAM/PKG-07/492		
9.	CAC Pvt Limited	MKCIL/ASSAM/PKG-07/489		

4-L of NH 37 from design Ch 0+020 on NH-8 near Karimganj to design Chainage 14+380 near Sutarkandi (Spur Connectivity to Indo/Bangladesh Border) Silchar-Churaibari Pkg-7 in the State of Assam on HAM mode.

Other				
Sr. No.	Brand Name	Letter No.	Status	IE Letter No.
1.	Titan Technovators.	MKCIL/ASSAM/PKG-07/264 dt. 04.07.2025	Approved	TASPL-MAV/NH-37/MKCIL/2025/MAY/39
2.	Abhuva innovation	MKCIL/ASSAM/PKG-07/265 dt. 04.07.2025	Approved	TASPL-MAV/NH-37/MKCIL/2025/MAY/40
3.	Elegant steel	MKCIL/ASSAM/PKG-07/167 Dt 19.04.2025	Approved	TASPL-MAV/NH-37/MKCIL/2025/MAY/28

4-L of NH 37 from design Ch 0+020 on NH-8 near Karimganj to design Chainage 14+380 near Sutarkandi (Spur Connectivity to Indo/Bangladesh Border) Silchar-Churaibari Pkg-7 in the State of Assam on HAM mode.

10.3.5 Monthly Laboratory Report

Sr. No.	Name of test	Reference as per IS/ MoRT&H	Frequency of Tests	Total Tests Conducted upto Previous Month			No. of Tests Conducted during this Month			No. of Tests Conducted upto this Month			No. of Tests Cecked by IE			% Checke d by IE	Rema rks
				Tested	Passed	Failed	Tested	Passed	Failed	Tested	Passed	Failed	Tested	Passed	Failed		
LAB & FIELD TEST'S																	
(I). OGL Samples		IRC:36-2010															
1.1	Free Swelling Index (FSI)	IS : 2720 (P-40)	1 Test / Every 500 m Interval's	33	33	0	0	0	0	33	33	0	0	0	0	0.00	
1.2	Grain size analysis	IS : 2720 (P-4)	1 Test / Every 500 m Interval's	33	33	0	0	0	0	33	33	0	0	0	0	0.00	
1.3	Liquid limits (LL)	IS : 2720 (P-5)	1 Test / Every 500 m Interval's	33	33	0	0	0	0	33	33	0	0	0	0	0.00	
1.4	Plasticity Index (PI)	IS : 2720 (P-5)	1 Test / Every 500 m Interval's	33	33	0	0	0	0	33	33	0	0	0	0	0.00	
1.5	Proctor test (MDD & OMC)	IS : 2720 (P-8)	1 Test / Every 500 m Interval's	33	33	0	0	0	0	33	33	0	0	0	0	0.00	
1.6	California Bearing Ratio Test (CBR)	IS : 2720 (P-16)	As Required	33	33	0	0	0	0	33	33	0	0	0	0	0.00	
1.7	Field Compaction Test (OGL)	IS : 2720 (P-28)	1 Set / 3000 Sqm. (1Set = 10 Pit's)	323	310	13	10	10	0	333	320	13	0	0	0	0.00	
(II). Borrow area Samples (EMB/SG)		MoRT&H (Clause-305)															
2.1	Free Swelling Index (FSI)	IS : 2720 (P-40)	2 Test's / 3000 Cum.	46	46	0	45	45	0	91	91	0	0	0	0	0.00	
2.2	Grain size analysis (GSA)	IS : 2720 (P-4)	2 Test's / 3000 Cum.	46	46	0	45	45	0	91	91	0	0	0	0	0.00	
2.3	Liquid limits (LL)	IS : 2720 (P-5)	2 Test's / 3000 Cum.	46	46	0	45	45	0	91	91	0	0	0	0	0.00	
2.4	Plasticity Index (PI)	IS : 2720 (P-5)	2 Test's / 3000 Cum.	46	46	0	45	45	0	91	91	0	0	0	0	0.00	
2.5	Proctor test (MDD & OMC)	IS : 2720 (P-8)	2 Test's / 3000 Cum.	46	46	0	45	45	0	91	91	0	0	0	0	0.00	
2.6	California Bearing Ratio Test (CBR)	IS : 2720 (P-16)	1 Test's / 3000 Cum.	23	23	0	20	20	0	43	43	0	0	0	0	0.00	
2.7	Field Compaction Test (Emb)	IS : 2720 (P-28)	1 Set / 3000 Sqm. (1Set = 10 Pit's)	397	375	22	140	140	0	537	515	22	40	40	0	28.57	
2.8	Field Compaction Test (Subgrade)	IS : 2720 (P-28)	1 Set / 2000 Sqm. (1Set = 10 Pit's)	14	14	0	50	50	0	64	64	0	4	4	0	8.00	
(III). Coarse Agg. for Concrete Work's		MoRT&H Table -900-6															
4.1	Gradation of Coarse Aggregate	IS : 2386 (P-1)	1 Test / Every day's work	159	142	17	31	31	0	190	173	17	5	5	0	16.13	
4.2	Flakiness Index (FI)	IS : 2386 (P-1)	1 Test for source / Weekly	30	26	4	4	4	0	34	30	4	1	1	0	25.00	
4.3	Aggregate Impact Value (A.I.V)	IS : 2386 (P-4)	1 Test for source / Weekly	30	26	4	4	4	0	34	30	4	1	1	0	25.00	
4.4	Specific Gravity	IS : 2386 (P-3)	1 Test / Source	4	4	0	1	1	0	5	5	0	0	0	0	0.00	
4.5	Water Absorption	IS : 2386 (P-3)	1 Test / Source	4	4	0	1	1	0	5	5	0	0	0	0	0.00	
4.6	Deleterious Constituents	IS : 2386 (P-2)	1 Test / As Required	0	0	0	0	0	0	0	0	0	0	0	0	0.00	
4.7	Moisture correction	IS : 2386 (P-3)	1 Test / Day	191	161	0	31	31	0	222	192	0	5	5	0	16.13	
4.8	Soundness	IS : 2386 (P-5)	1 Test / Source	0	0	0	0	0	0	0	0	0	0	0	0	0.00	
4.9	Alkali Aggregate Reactivity	IS : 2386 (P-7)	1 Test / Source	0	0	0	0	0	0	0	0	0	0	0	0	0.00	
(IV). Fine Agg. for Concrete		MoRT&H Table -900-6															
5.1	Gradation	IS : 383	1 Test / Every day's work	137	137	0	30	30	0	167	167	0	8	8	0.0	26.67	
5.2	Specific Gravity	IS : 2386 (P-3)	1 Test / Source	4	4	0	1	1	0	5	5	0	0	0	0.0	0.00	
5.3	Water Absorption	IS : 2720 (P-3)	1 Test / Source	4	4	0	1	1	0	5	5	0	0	0	0.0	0.00	
5.4	Silt Content	IS : 383	1 Test / Weekly	30	30	0	4	4	0	34	34	0	1	1	0.0	25.00	
5.5	Moisture correction	IS : 2386 (P-3)	1 Test / Every day's work	131	131	0	30	30	0	161	161	0	6	6	0.0	20.00	
(V). Concrete Cube's		IS: 516															
Grade of Concrete : M-10 PCC																	
6.1	for 7 days	IS : 516	As per Frequency MoRT&H Table 1700-09	54	54	0	27	27	0	81	81	0	5	5	0	18.52	
6.2	for 28 days	IS : 516	As per Frequency MoRT&H Table 1700-09	73	73	0	35	35	0	108	108	0	0	0	0	0.00	
Grade of Concrete : M-15 PCC																	
6.3	for 7 days	IS : 516	As per Frequency MoRT&H Table 1700-09	2	2	0	12	12	0	14	14	0	0	0	0	0.00	
6.4	for 28 days	IS : 516	As per Frequency MoRT&H Table 1700-09	8	8	0	11	11	0	19	19	0	0	0	0	0.00	
Grade of Concrete : M-20 PCC																	
6.5	for 7 days	IS : 516	As per Frequency MoRT&H Table 1700-09	0	0	0	0	0	0	0	0	0	0	0	0	0.00	
6.6	for 28 days	IS : 516	As per Frequency MoRT&H Table 1700-09	0	0	0	0	0	0	0	0	0	0	0	0	0.00	
Grade of Concrete : M-20 RCC																	
6.7	for 7 days	IS : 516	As per Frequency MoRT&H Table 1700-09	1	1	0	1	1	0	2	2	0	0	0	0	0.00	
6.8	for 28 days	IS : 516	As per Frequency MoRT&H Table 1700-09	0	0	0	1	1	0	1	1	0	0	0	0	0.00	

4-L of NH 37 from design Ch 0+020 on NH-8 near Karimganj to design Chainage 14+380 near Sutarkandi (Spur Connectivity to Indo/Bangladesh Border) Silchar-Churaibari Pkg-7 in the State of Assam on HAM mode.

Grade of Concrete : M-20 for KERB																
6.9	for 7 days	IS: 516	As per Frequency MoRT&H Table 1700-09	0	0	0	0	0	0	0	0	0	0	0	0	0.00
6.1	for 28 days	IS: 516	As per Frequency MoRT&H Table 1700-09	0	0	0	0	0	0	0	0	0	0	0	0	0.00
Grade of Concrete : M-25 RCC																
6.11	for 7 days	IS: 516	As per Frequency MoRT&H Table 1700-09	42	42	0	47	47	0	89	89	0	0	0	0	0.00
6.12	for 28 days	IS: 516	As per Frequency MoRT&H Table 1700-09	62	62	0	40	40	0	102	102	0	0	0	0	0.00
Grade of Concrete : M-30 RCC																
6.13	for 7 days	IS: 516	As per Frequency MoRT&H Table 1700-09	122	122	0	17	17	0	139	139	0	4	4	0	23.53
6.14	for 28 days	IS: 516	As per Frequency MoRT&H Table 1700-09	232	232	0	17	17	0	249	249	0	10	10	0	58.82
Grade of Concrete : M-35 RCC																
6.15	for 7 days	IS: 516	As per Frequency MoRT&H Table 1700-09	22	22	0	4	4	0	26	26	0	0	0	0	0.00
6.16	for 28 days	IS: 516	As per Frequency MoRT&H Table 1700-09	102	102	0	1	1	0	103	103	0	0	0	0	0.00
Grade of Concrete : M-35 Pile																
6.17	for 7 days	IS: 516	As per Frequency MoRT&H Table 1700-09	0	0	0	6	6	0	6	6	0	0	0	0	0.00
6.18	for 28 days	IS: 516	As per Frequency MoRT&H Table 1700-09	4	4	0	4	4	0	8	8	0	0	0	0	0.00
Grade of Concrete : M-35 RE BLOCK																
6.19	for 7 days	IS: 516	As per Frequency MoRT&H Table 1700-09	21	21	0	3	3	0	24	24	0	2	2	0	66.67
6.2	for 28 days	IS: 516	As per Frequency MoRT&H Table 1700-09	18	18	0	52	52	0	70	70	0	2	2	0	3.85
Grade of Concrete : M-40 RCC																
6.21	for 7 days	IS: 516	As per Frequency MoRT&H Table 1700-09	4	4	0	0	0	0	4	4	0	1	1	0	#DIV/0!
6.22	for 28 days	IS: 516	As per Frequency MoRT&H Table 1700-09	13	13	0	0	0	0	13	13	0	1	1	0	#DIV/0!
Grade of Concrete : M-40 PILE																
6.21	for 7 days	IS: 516	As per Frequency MoRT&H Table 1700-09	0	0	0	58	58	0	58	58	0	0	0	0	0.00
6.22	for 28 days	IS: 516	As per Frequency MoRT&H Table 1700-09	0	0	0	56	56	0	56	56	0	0	0	0	0.00
Grade of Concrete : M-55 GIRDER/PSC																
6.25	for 7 days	IS: 516	As per Frequency MoRT&H	0	0	0	6	6	0	6	6	0	3	3	3	50.00
6.26	for 28 days	IS: 516	As per Frequency MoRT&H	0	0	0	0	0	0	0	0	0	0	0	0	#DIV/0!
(VI). Cement tests																
7.1	Fineness of Cement	IS: 4031 (P-1)	1 Test Every Batch of Cement	13	13	0	5	5	0	18	18	0	2	2	0	40.00
7.2	Normal Consistency	IS: 4031 (P-4)	1 Test Every Batch of Cement	13	13	0	5	5	0	18	18	0	2	2	0	40.00
7.3	Initial Setting Time	IS: 4031 (P-5)	1 Test Every Batch of Cement	13	13	0	5	5	0	18	18	0	2	2	0	40.00
7.4	Final Setting time	IS: 4031 (P-5)	1 Test Every Batch of Cement	13	13	0	5	5	0	18	18	0	2	2	0	40.00
7.5	Compressive Strength (03 Days)	IS: 516	1 Test Every Batch of Cement	15	15	0	7	7	0	22	22	0	0	0	0	0.00
7.6	Compressive Strength (07 Days)	IS: 516	1 Test Every Batch of Cement	14	14	0	7	7	0	21	21	0	3	3	0	42.86
7.7	Compressive Strength (28 Days)	IS: 516	1 Test Every Batch of Cement	10	10	0	8	8	0	18	18	0	5	5	0	0.00
7.8	Soundness	IS: 4031 (P-3)	1 Test Every Batch of Cement	1	1	0	1	1	0	2	2	0	1	1	0	0.0
7.9	Specific Gravity	IS: 4031 (P-11)	1 Test Every Batch of Cement	0	0	0	1	1	0	0	0	0	1	1	0	0.0

4-L of NH 37 from design Ch 0+020 on NH-8 near Karimganj to design Chainage 14+380 near Sutarkandi (Spur Connectivity to Indo/Bangladesh Border) Silchar-Churaibari Pkg-7 in the State of Assam on HAM mode.

(VII). Granular Sub-Base			MoRT&H Clause - 401														
8.1	Gradation	Table 400-2	1 Test / 400 Cum.	0	0	0	0	30	30	0	30	30	0	10	10	0	33.33
8.2	Liquid limits (LL)	IS : 2720 (P-5)	1 Test / 400 Cum.	0	0	0	2	2	0	2	2	0	1	1	0	0.00	
8.3	Plasticity Index (PI)	IS : 2720 (P-5)	1 Test / 400 Cum.	0	0	0	2	2	0	0	0	0	0	0	0	0.00	
8.4	Moisture Prior to Compaction Test	IS : 2720 (P-2)	1 Test / 400 Cum.	0	0	0	1	1	0	0	0	0	0	0	0	0.00	
8.5	Proctor test (MDD & OMC)	IS : 2720 (P-8)	1 Test Per Source / As Required	0	0	0	1	1	0	0	0	0	1	1	0	0.00	
8.6	California Bearing Ratio Test (CBR)	IS : 2720 (P-16)	1 Test Per Source / As Required	0	0	0	1	1	0	1	1	0	1	1	0	0.00	
8.7	Water Absorption	IS : 2720 (P-3)	1 Test Per Source / As Required	0	0	0	1	1	0	1	1	0	0	0	0	0.00	
8.8	Aggregate Impact Value (AIV)	IS : 2386 (P-4)	As Required	0	0	0	1	1	0	1	1	0	1	1	0	0.00	
8.9	Field Compaction Test (GSB)	IS : 2720 (P-28)	1 Set / 1000 Sqm. (1Set = 3 Pit's)	0	0	0	0	0	0	0	0	0	0	0	0	0.00	
(VIII). Cement Treated Sub			MoRT&H Clause - 403 & IRC-37: 2018														
9.1	Gradation	MoRT&H Table 400-4	1 Test 400 Cum.	0	0	0	0	0	0	0	0	0	0	0	0	0.00	
9.2	Liquid limits (LL)	IS : 2720 (P-5)	1 Test 400 Cum.	0	0	0	0	0	0	0	0	0	0	0	0	0.00	
9.3	Plasticity Index (PI)	IS : 2720 (P-5)	1 Test 400 Cum.	0	0	0	0	0	0	0	0	0	0	0	0	0.00	
9.4	Proctor test (MDD & OMC)	IS : 2720 (P-8)	As Required	0	0	0	0	0	0	0	0	0	0	0	0	0.00	
9.5	Unconfined Compressive Strength (UCS)	IS: 516	3 Specimens each 400 ton/ Minimum 2 tests per day	0	0	0	0	0	0	0	0	0	0	0	0	0.00	
9.6	Cement Content	IS: 516	3 Specimens each 400 ton/ Minimum 2 tests per day	0	0	0	0	0	0	0	0	0	0	0	0	0.00	
9.7	Flexural Strength	IS: 516	3 Specimens each 400 ton/ Minimum 2 tests per day	0	0	0	0	0	0	0	0	0	0	0	0	0.00	
9.8	Soundness Test	BIS: 4332 (P-4)	As Required	0	0	0	0	0	0	0	0	0	0	0	0	0.00	
9.9	Field Compaction Test (CTSB)	IS : 2720 (P-28)	2 Test's 500 Sqm.	0	0	0	0	0	0	0	0	0	0	0	0	0.00	
(IX). Cement Treated Base			MoRT&H Clause - 403 & IRC-37: 2018														
10.1	Gradation	MoRT&H Table 400-4	1 Test 400 Cum.	0	0	0	0	0	0	0	0	0	0	0	0	0.00	
10.2	Proctor test (MDD & OMC)	IS : 2720 (P-8)	As Required	0	0	0	0	0	0	0	0	0	0	0	0	0.00	
10.3	Unconfined Compressive Strength (UCS)	IS: 516	3 Specimens each 400 ton/ Minimum 2 tests per day	0	0	0	0	0	0	0	0	0	0	0	0	0.00	
10.4	Cement Content	IS: 516	3 Specimens each 400 ton/ Minimum 2 Tests per day	0	0	0	0	0	0	0	0	0	0	0	0	0.00	
10.5	Flexural Strength	IS: 516	3 Specimens each 400 ton/ Minimum 2 Tests per day	0	0	0	0	0	0	0	0	0	0	0	0	0.00	
10.6	Soundness Test	BIS: 4332 (P-4)	As Required	0	0	0	0	0	0	0	0	0	0	0	0	0.00	
10.7	Field Compaction Test (CTSB)	IS : 2720 (P-28)	2 Test's 500 Sqm.	0	0	0	0	0	0	0	0	0	0	0	0	0.00	
(X). Wet Mix Macadam			MoRT&H-406														
11.1	Gradation	Table 400-13	1 Test / 200 Cum.	0	0	0	0	0	0	0	0	0	0	0	0	0.00	
11.2	Atterberg limits (LL & PI)	IS : 2720 (P-5)	1 Test / 200 Cum.	0	0	0	0	0	0	0	0	0	0	0	0	0.00	
11.3	Proctor test (MDD Vs OMC)	IS : 2720 (P-8)	As Required	0	0	0	0	0	0	0	0	0	0	0	0	0.00	
11.4	Aggregate Impact Value (A.I.V)	IS : 2386 (P-4)	1 Test/ 1000 Cum	0	0	0	0	0	0	0	0	0	0	0	0	0.00	
11.5	Combined Flakiness & Elongation (FI & EI)	IS : 2386 (P-1)	1 Test / 500 Cum	0	0	0	0	0	0	0	0	0	0	0	0	0.00	
11.6	Water Absorption	IS : 2386 (P-3)	As Required	0	0	0	0	0	0	0	0	0	0	0	0	0.00	
11.7	Soundness	IS : 2386 (P-3)	As Required	0	0	0	0	0	0	0	0	0	0	0	0	0.00	
11.8	Field Compaction Test (WMM)	IS : 2720 (P-28)	1 Set / 1000 Sqm. (1Set = 3 Pit's)	0	0	0	0	0	0	0	0	0	0	0	0	0.00	
LAB & FIELD TEST'S																	
(XI). Aggregate Inter Layer			MoRT&H-406														
12.1	Gradation	Table 400-13	1 Test / 200 Cum.	0	0	0	0	0	0	0	0	0	0	0	0	0.00	
12.2	Atterberg limits (LL & PI)	IS : 2720 (P-5)	1 Test / 200 Cum.	0	0	0	0	0	0	0	0	0	0	0	0	0.00	
12.3	Proctor test (MDD & OMC)	IS : 2720 (P-8)	As Required	0	0	0	0	0	0	0	0	0	0	0	0	0.00	
12.4	Aggregate Impact Value (A.I.V)	IS : 2386 (P-4)	1 Test/ 1000 Cum	0	0	0	0	6	0	0	6	0	0	0	0	0.00	
12.5	Combined Flakiness & Elongation (FI & EI)	IS : 2386 (P-1)	1 Test / 500 Cum	0	0	0	0	0	0	0	0	0	0	0	0	0.00	
12.6	Water Absorption	IS : 2386 (P-3)	As Required	0	0	0	0	0	0	0	0	0	0	0	0	0.00	
12.7	Soundness	IS : 2386 (P-3)	As Required	0	0	0	0	0	0	0	0	0	0	0	0	0.00	
12.8	Field Compaction Test (AIL)	IS : 2720 (P-28)	1 Set / 1000 Sqm. (1Set = 3 Pit's)	0	0	0	0	0	0	0	0	0	0	0	0	0.00	
(XII). Dense Bituminous			MoRT&H-500														
13.1	Binder Content & Gradation	As per MoRT&H	1 Test / 400 Tonnes	0	0	0	0	0	0	0	0	0	0	0	0	0.00	
13.2	Mix Combined Gradation	As per MoRT&H	1 Test / 400 Tonnes	0	0	0	0	0	0	0	0	0	0	0	0	0.00	
13.3	Marshall Test (In Sets)	ASTM-D :1559	1 Set/ 400 Tonnes	0	0	0	0	0	0	0	0	0	0	0	0	0.00	
13.4	Aggregate Impact Value (A.I.V)	IS : 2386 (P-4)	1 Test / 350 Cum	0	0	0	0	0	0	0	0	0	0	0	0	0.00	
13.5	Combined Flakiness & Elongation (FI & EI)	IS : 2386 (P-1)	1 Test / 350 Cum	0	0	0	0	0	0	0	0	0	0	0	0	0.00	
13.6	Water Absorption & Specific Gravity	IS : 2386 (P-3)	1 Test/ Source & As Required	0	0	0	0	0	0	0	0	0	0	0	0	0.00	
13.7	Stripping Value	IS : 6241	1 Test/ Source & As Required	0	0	0	0	0	0	0	0	0	0	0	0	0.00	
13.8	Maximum Sp.Gravity(Gmm)	ASTM D 2041	1 Set/ 400 MTMix	0	0	0	0	0	0	0	0	0	0	0	0	0.00	
13.9	Density of compacted layer	MoRT&H Sec.900	1 Test / 700 Sq.m	0	0	0	0	0	0	0	0	0	0	0	0	0.00	
13.10	Soundness	IS : 2386 (P-3)	1 Test/ Source & As Required	0	0	0	0	0	0	0	0	0	0	0	0	0.00	
13.11	Sand equivalent test	IS : 2720 (P-37)	1 Test/ Source & As Required	0	0	0	0	0	0	0	0	0	0	0	0	0.00	
13.12	plasticity Index	MoRT&H Sec.900	1 Test/ Source & As Required	0	0	0	0	0	0	0	0	0	0	0	0	0.00	
13.13	percentage of Fractured face	MoRT&H Sec.900	1 Test/ Source & As Required	0	0	0	0	0	0	0	0	0	0	0	0	0.00	
13.14	Polished Stone Value	BS: 812 (P-114)	1 Test/ Source & As Required	0	0	0	0	0	0	0	0	0	0	0	0	0.00	

4-L of NH 37 from design Ch 0+020 on NH-8 near Karimganj to design Chainage 14+380 near Sutarkandi (Spur Connectivity to Indo/Bangladesh Border) Silchar-Churaibari Pkg-7 in the State of Assam on HAM mode.

(XIII). Bituminous Concrete		MoRTH-500													
14.1	Binder Content & Gradation	As per MoRT&H	1 Test / 400 Tonnes	0	0	0	0	0	0	0	0	0	0	0	0.00
14.2	Mix Combined Gradation	As per MoRT&H	1 Test / 400 Tonnes	0	0	0	0	0	0	0	0	0	0	0	0.00
14.3	Marshall Test (In Sets)	ASTM-D :1559	1 Tet/ 400 Tonnes	0	0	0	0	0	0	0	0	0	0	0	0.00
14.4	Aggregate Impact Value (A.I.V)	IS : 2386 (P-4)	1 Test / 350 Cum	0	0	0	0	0	0	0	0	0	0	0	0.00
14.5	Combined Flakiness & Elongation (FI & EI)	IS : 2386 (P-1)	1 Test / 350 Cum	0	0	0	0	0	0	0	0	0	0	0	0.00
14.6	Water Absorption & Specific Gravity	IS : 2386 (P-3)	1 Test/ Source & As Required	0	0	0	0	0	0	0	0	0	0	0	0.00
14.7	Stripping Value	IS : 6241	1 Test/ Source & As Required	0	0	0	0	0	0	0	0	0	0	0	0.00
14.8	Maximum Sp.Gravity(Gmm)	ASTM D 2041	1 set/ 400 MTMix	0	0	0	0	0	0	0	0	0	0	0	0.00
14.9	Density of Compacted Layer	MoRT&H Sec.900	1 test / 700 Sq.m	0	0	0	0	0	0	0	0	0	0	0	0.00
14.10	Soundness	IS : 2386 (P-3)	1 Test/ Source & As Required	0	0	0	0	0	0	0	0	0	0	0	0.00
14.11	Sand equivalent test	IS : 2720 (P-37)	1 Test/ Source & As Required	0	0	0	0	0	0	0	0	0	0	0	0.00
14.12	plasticity Index	MoRT&H Sec.900	1 Test/ Source & As Required	0	0	0	0	0	0	0	0	0	0	0	0.00
14.13	percentage of Fractured face	MoRT&H Sec.900	1 Test/ Source & As Required	0	0	0	0	0	0	0	0	0	0	0	0.00
14.14	Polished Stone Value	BS: 812 (P-114)	1 Test/ Source & As Required	0	0	0	0	0	0	0	0	0	0	0	0.00
LAB & FIELD TEST'S															
(XIV). Bitumen (VG-40)															
15.1	Softening Point(^o c)	IS : 1205	1 Test Per Lot	0	0	0	0	0	0	0	0	0	0	0	0.00
15.2	Penetration at 25 ^o c 100gm 5 Sec	IS : 1203	1 Test Per Lot	0	0	0	0	0	0	0	0	0	0	0	0.00
15.3	Ductility at 25 ^o c	IS : 1208	As Required	0	0	0	0	0	0	0	0	0	0	0	0.00
15.4	Absolute Viscosity at 60 ^o /135 ^o C (CST)	IS : 1206 (P-2)	1 Test Per Lot	0	0	0	0	0	0	0	0	0	0	0	0.00
15.5	Kinematic Viscosity at 135 ^o C (CST)	IS : 1206 (P-3)	As Required	0	0	0	0	0	0	0	0	0	0	0	0
15.6	Specific Gravity at 27 ^o C	IS : 2380 (P-4)	As Required	0	0	0	0	0	0	0	0	0	0	0	0.00
15.7	Flash Pint	IS : 1209 (IS: 1448 P-69)	As Required	0	0	0	0	0	0	0	0	0	0	0	0
15.8	Solubility Test	IS : 1216	As Required	0	0	0	0	0	0	0	0	0	0	0	0
(XV). MODIFIED BITUMEN (PMB 76E-10)															
16.1	Specific Gravity at 27 ^o C	IS : 2380 (P-4)	As Required	0	0	0	0	0	0	0	0	0	0	0	0.00
16.2	Softening Point (^o C)	IS : 1205	1 Test Per Lot	0	0	0	0	0	0	0	0	0	0	0	0.00
16.3	Seperation, Difference in Softening Point (0 ^o C)	IS : 15462: 2019	1 Test Per Lot	0	0	0	0	0	0	0	0	0	0	0	0.00
16.4	Elastic Recovery at 15 ^o C	IS : 15462: 2019	1 Test Per Lot	0	0	0	0	0	0	0	0	0	0	0	0.00
(XVI). Emulsion (SS-1)															
17.1	Viscosity @ 25 ^o C	IS : 8887:2004	1 Test Per Lot	0	0	0	0	0	0	0	0	0	0	0	0
17.2	Water Content	IS : 8887:2004	As Required	0	0	0	0	0	0	0	0	0	0	0	0
17.3	Prime coat	IS : 8887:2004	3 test / Day	0	0	0	0	0	0	0	0	0	0	0	0.00
(XVII). Emulsion (RS-1)															
18.1	Viscosity @ 50 ^o C	IS : 8887:2004	1 Test Per Lot	0	0	0	0	0	0	0	0	0	0	0	0
18.2	Water Content	IS : 8887:2004	As Required	0	0	0	0	0	0	0	0	0	0	0	0
18.3	Tack Coat	IS : 8887:2004	3 test / Day	0	0	0	0	0	0	0	0	0	0	0	0.00
(XVIII). Lean Concrete (DLC)		MIX DESIGN	MoRT&H-600												
13.1	Gradation	Table 600-1	1 test / day	0	0	0	10	10	0	10	10	0	5	5	50.00
13.2	Field Compaction Test	IS : 2720 (P-28)	1 Set(3 pit) of tests / 2000 sqm.	0	0	0	0	0	0	0	0	0	0	0	0.00
13.3	Proctor test (MDD & OMC)	IS : 2720 (P-8)	As required	0	0	0	2	2	0	2	2	0	1	1	50.00
13.4	Aggregate Impact Value (A.I.V)	IS : 2386 (P-4)	As required	0	0	0	2	2	0	2	2	0	1	1	50.00
13.5	Flakiness & Elongation (FI & EI)	IS : 2386 (P-1)	As required	0	0	0	1	1	0	1	1	0	1	1	100.00
13.6	Water Absorption	IS : 2386 (P-3)	As required	0	0	0	1	1	0	1	1	0	1	1	100.00
13.7	Moisture correction	IS : 2386 (P-3)	1 test / Day	0	0	0	1	1	0	1	1	0	1	1	100.00
13.8	Compressive Strength (07 day's)	IS : 516	07 days/ Each Day 5 Cube's	0	0	0	6	6	0	6	6	0	6	6	100.00
(XIX). Pavement Quality		MIX DESIGN	MoRT&H-600												
14.1	Gradation	Table 600-1	1 Test / Day	0	0	0	20	20	0	20	20	0	10	10	50.00
14.2	Aggregate Impact Value (A.I.V)	IS : 2386 (P-4)	As Required	0	0	0	2	2	0	2	2	0	1	1	50.00
14.3	Flakiness 7 Elongation (FI & EI)	IS : 2386 (P-1)	As Required	0	0	0	1	1	0	1	1	0	1	1	100.00
14.4	Water Absorption	IS : 2386 (P-3)	As Required	0	0	0	1	1	0	1	1	0	1	1	100.00
14.5	Slump Test	IS : 1199	1 Test Each Dumper	0	0	0	0	0	0	0	0	0	0	0	0.00
14.6	Compressive Strength (07 day's)	IS : 516	Compressive Strength (07 day's)	0	0	0	6	6	0	6	6	0	6	6	100.00
14.7	Compressive Strength (28 day's)	IS : 516		0	0	0	6	6	0	6	6	0	6	6	100.00
14.8	Flexural Strength (07 day's)	IS : 516	As per Frequency 02 Beam's /150 Cum (Min.	0	0	0	6	6	0	6	6	0	6	6	100.00
14.9	Flexural Strength (28 day's)	IS : 516	6 Beam's)	0	0	0	6	6	0	6	6	0	6	6	100.00

4-L of NH 37 from design Ch 0+020 on NH-8 near Karimganj to design Chainage 14+380 near Sutarkandi (Spur Connectivity to Indo/Bangladesh Border) Silchar-Churaibari Pkg-7 in the State of Assam on HAM mode.

THIRD PARTY TESTS (NABL ACCREDITED LABORATORY)															
(XX). Coarse Aggregates															
18.1	Gradation	IS: 2386 (P-1)	1 Test / Source	2	2	0	0	0	0	2	2	0	0	0	0.00
18.2	FI & EI	IS: 2386 (P-1)	1 Test / Source	2	2	0	0	0	0	2	2	0	0	0	0.00
18.3	Aggregate Impact Value	IS: 2386 (P-4)	1 Test / Source	2	2	0	0	0	0	2	2	0	0	0	0.00
18.4	Specific Gravity	IS: 2386 (P-3)	1 Test / Source	2	2	0	0	0	0	2	2	0	0	0	0.00
18.5	Water Absorption	IS: 2386 (P-3)	1 Test / Source	2	2	0	0	0	0	2	2	0	0	0	0.00
18.6	Deleterious Content	IS: 2386 (P-1)	1 Test / Source	2	2	0	0	0	0	2	2	0	0	0	0.00
18.7	L.A.V.	IS: 2386 (P-4)	1 Test / Source	2	2	0	0	0	0	2	2	0	0	0	0.00
18.8	Alkali Aggregate Reactivity	IS: 2386 (P-7)	1 Test / Source	2	2	0	0	0	0	2	2	0	0	0	0.00
18.9	Soundness	IS: 2386 (P-5)	1 Test / Source	2	2	0	0	0	0	2	2	0	0	0	0.00
18.10	Petrographic Examination	IS: 2386 (P-8)	1 Test / Source	2	2	0	0	0	0	2	2	0	0	0	0.00
18.11	Stone Polished Value	BS-812 (P-114)	1 Test / Source	2	2	0	0	0	0	2	2	0	0	0	0.00
(XXI). Fine Aggregates															
19.1	Gradation	IS: 383	1 Test / Source	2	2	0	0	0	0	2	2	0	0	0	0.00
19.2	Specific Gravity	IS: 2386 (P-3)	1 Test / Source	2	2	0	0	0	0	2	2	0	0	0	0.00
19.3	Water Absorption	IS: 2386 (P-3)	1 Test / Source	2	2	0	0	0	0	2	2	0	0	0	0.00
19.4	Deleterious Content	IS: 2386 (P-1)	1 Test / Source	2	2	0	0	0	0	2	2	0	0	0	0.00
19.5	Silt Content	IS: 2386 (P-4)	1 Test / Source	2	2	0	0	0	0	2	2	0	0	0	0.00
19.6	Alkali Aggregate Reactivity	IS: 2386 (P-7)	1 Test / Source	2	2	0	0	0	0	2	2	0	0	0	0.00
19.7	Soundness	IS: 2386 (P-5)	1 Test / Source	2	2	0	0	0	0	2	2	0	0	0	0.00
19.8	Organic Impurities	IS: 2386 (P-8)	1 Test / Source	2	2	0	0	0	0	2	2	0	0	0	0.00
19.9	Fineness Modulus	IS: 383	1 Test / Source	2	2	0	0	0	0	2	2	0	0	0	0.00
(XXII). TMT Bar's (Steel)															
20.1	Physical properties	IS: 1786	< 10mm - 1 sample/25 MT, 10-16mm - 1 sample/35 MT,	0	0	0	0	0	0	0	0	0	0	0	0.00
20.2	Chemical properties	IS: 1786	> 16mm - 1 sample/45 MT	0	0	0	0	0	0	0	0	0	0	0	0.00
20.3	Factory Visit	IS: 1786	Elegant Steel Jointly	1	1	0	1	1	0	2	2	0	1	1	100.00
(XXIII). Construction Water															
21.1	Suitability for construction	IS: 456	1 Test Per Source / As Required	1	1	0	0	0	0	1	1	0	0	0	0.00
(XXIV). Chemical Admixture															
22.1	Physical & Chemical properties	IS: 9103	1 Test/ Per Lot	0	0	0	0	0	0	0	0	0	0	0	0.00
(XXV). Cement (OPC-53 Grade)															
23.1	Physical & Chemical properties	IS: 8112	1 Test / Source	0	0	0	0	0	0	0	0	0	0	0	0.00
(XXVI). Soil - Borrow Area															
24.1	Mechanical	IS: 2720 (P-39)	1 Test / Source	0	0	0	0	0	0	0	0	0	0	0	0.00
(XXVII). NP-4 Hume Pipe Test										0	0				
25.1	600 MM	IS: 458	1 test per Lot / of 50 Pipes	0	0	0	0	0	0	0	0	0	0	0	0.00
(XXVIII). Bitumen (Emulsion)															
26.1	Bitumen Emulsion SS-1	IS: 8887	1 Test/ Per Lot	0	0	0	0	0	0	0	0	0	0	0	0.00
26.2	Bitumen Emulsion RS-1	IS: 8887	1 Test/ Per Lot	0	0	0	0	0	0	0	0	0	0	0	0.00
(XXIX). Bitumen (VG-40)															
27.1	Bitumen VG-40	IS: 73	1 Test/ Per Lot	0	0	0	0	0	0	0	0	0	0	0	0.00
(XXX). Bitumen (PMB)															
28.1	Bitumen PMB	IS: 15462-2019	1 Test/ Per Lot	0	0	0	0	0	0	0	0	0	0	0	0.00
(XXXI). Curing Compound															
29.1	Physical & Chemical properties	ASTM C309	1 Test/ Per Lot	0	0	0	0	0	0	0	0	0	0	0	0.00

4-L of NH 37 from design Ch 0+020 on NH-8 near Karimganj to design Chainage 14+380 near Sutarkandi (Spur Connectivity to Indo/Bangladesh Border) Silchar-Churaibari Pkg-7 in the State of Assam on HAM mode.

10.3.6 Lab Equipment List

LAB EQUIPMENT FOR PKG-07			
SINO.	Description of Goods		Quantity
1	COARSE SIEVES	45 CM DIA-G.I-75.0 MM	2.0 Nos
2	COARSE SIEVES	45 CM DIA-G.I-63.0 MM	2.0 Nos
3	COARSE SIEVES	45 CM DIA-G.I-53.0 MM	2.0 Nos
4	COARSE SIEVES	45 CM DIA-G.I-50.0 MM	2.0 Nos
5	COARSE SIEVES	45 CM DIA-G.I-45.0 MM	2.0 Nos
6	COARSE SIEVES	45 CM DIA-G.I-40.0 MM	2.0 Nos
7	COARSE SIEVES	45 CM DIA-G.I-37.5 MM	2.0 Nos
8	COARSE SIEVES	45 CM DIA-G.I-31.5 MM	2.0 Nos
9	COARSE SIEVES	45 CM DIA-G.I-25.0 MM	2.0 Nos
10	COARSE SIEVES	45 CM DIA-G.I-26.5 MM	2.0 Nos
11	COARSE SIEVES	45 CM DIA-G.I-22.4 MM	2.0 Nos
12	COARSE SIEVES	45 CM DIA-G.I-20.0 MM	2.0 Nos
13	COARSE SIEVES	45 CM DIA-G.I-19.0 MM	2.0 Nos
14	COARSE SIEVES	45 CM DIA-G.I-16.0 MM	2.0 Nos
15	COARSE SIEVES	45 CM DIA-G.I-14.0 MM	2.0 Nos
16	COARSE SIEVES	45 CM DIA-G.I-13.20 MM	2.0 Nos
17	COARSE SIEVES	45 CM DIA-G.I-12.50 MM	2.0 Nos
18	COARSE SIEVES	45 CM DIA-G.I-11.20 MM	2.0 Nos
19	COARSE SIEVES	45 CM DIA-G.I-10.00 MM	2.0 Nos
20	COARSE SIEVES	45 CM DIA-G.I-9.5 MM	2.0 Nos
21	COARSE SIEVES	45 CM DIA-G.I-6.7 MM	2.0 Nos
22	COARSE SIEVES	45 CM DIA-G.I-6.3 MM	2.0 Nos
23	COARSE SIEVES	45 CM DIA-G.I-5.6 MM	2.0 Nos
24	COARSE SIEVES	45 CM DIA-G.I-4.75 MM	2.0 Nos
25	COARSE SIEVES	45 CM DIA-G.I-2.8 MM	2.0 Nos
26	COARSE SIEVES	45 CM DIA-G.I-2.36 MM	2.0 Nos
27	COARSE SIEVES	45 CM DIA-G.I-1.18 MM	2.0 Nos
28	Lid & Pan	45 CM DIA-G.I-Frame-450 MM	2.0 Nos
29	FINE SIEVES	20 CM DIA-BRASS-10 MM	2.0 Nos
30	FINE SIEVES	20 CM DIA-BRASS-6.3 MM	1.0 Nos
31	FINE SIEVES	20 CM DIA-BRASS-5.6 MM	2.0 Nos
32	FINE SIEVES	20 CM DIA-BRASS-5.0 MM	1.0 Nos
33	FINE SIEVES	20 CM DIA-BRASS-4.75 MM	2.0 Nos
34	FINE SIEVES	20 CM DIA-BRASS-3.35 MM	1.0 Nos
35	FINE SIEVES	20 CM DIA-BRASS-2.80 MM	2.0 Nos
36	FINE SIEVES	20 CM DIA-BRASS-2.36 MM	4.0 Nos
37	FINE SIEVES	20 CM DIA-BRASS-2.0 MM	2.0 Nos
38	FINE SIEVES	20 CM DIA-BRASS-1.4 MM	2.0 Nos
39	FINE SIEVES	20 CM DIA-BRASS-1.7 MM	2.0 Nos
40	FINE SIEVES	20 CM DIA-BRASS-1.18 MM	2.0 Nos
41	FINE SIEVES	20 CM DIA-BRASS-1.00 MM	2.0 Nos
42	FINE SIEVES	20 CM DIA-BRASS-0.850 MM	2.0 Nos
43	FINE SIEVES	20 CM DIA-BRASS-0.710 MM	2.0 Nos
44	FINE SIEVES	20 CM DIA-BRASS-0.600 MM	4.0 Nos
45	FINE SIEVES	20 CM DIA-BRASS-0.500 MM	2.0 Nos
46	FINE SIEVES	20 CM DIA-BRASS-0.425 MM	2.0 Nos
47	FINE SIEVES	20 CM DIA-BRASS-0.355 MM	1.0 Nos
48	FINE SIEVES	20 CM DIA-BRASS-0.300 MM	4.0 Nos
49	FINE SIEVES	20 CM DIA-BRASS-0.212 MM	2.0 Nos
50	FINE SIEVES	20 CM DIA-BRASS-0.180 MM	2.0 Nos

4-L of NH 37 from design Ch 0+020 on NH-8 near Karimganj to design Chainage 14+380 near Sutarkandi (Spur Connectivity to Indo/Bangladesh Border) Silchar-Churaibari Pkg-7 in the State of Assam on HAM mode.

51	FINE SIEVES	20 CM DIA-BRASS-0.150 MM	4.0 Nos
52	FINE SIEVES	20 CM DIA-BRASS-0.125 MM	2.0 Nos
53	FINE SIEVES	20 CM DIA-BRASS-0.090 MM	2.0 Nos
54	FINE SIEVES	20 CM DIA-BRASS-0.075 MM	5.0 Nos
55	FINE SIEVES	20 CM DIA-BRASS-0.045 MM	2.0 Nos
56	Lid & Pan	20 CM DIA-BRASS Frame-200 MM	2.0 Nos
57	Ele. Weight. Balance	50 Kg	3.0 Nos
58	Ele. Weight. Balance	30 Kg	3.0 Nos
59	Ele. Weight. Balance	15 Kg	2.0 Nos
60	Ele. Weight. Balance	10 Kg	2.0 Nos
61	Precision Ele. Balance	0.6 Kg	2.0 Nos
62	Hot Oven Air	90*60*60 cm	1.0 Nos
63	Length gauge		2.0 Nos
64	flaxiness Gauge		2.0 Nos
65	AIV Machine		1.0 Nos
66	Picnometer Bottle		2.0 Nos
67	Vibrating Machine with Digital Timer & Mould		1.0 Nos
68	Vicat Appratus Needle		1.0 Nos
69	Glass Plate	450*450*8 mm	1.0 Nos
70	Cube Mould	15 cm	80.0 Nos
71	Cube Mould	7.06 cm	18.0 Nos
72	Cube Mould	10 cm	18.0 Nos
73	Slump Test with Tamping Rod		6.0 Nos
74	Water Bath For Soundness		1.0 Nos
75	Le-Chatlier Mould	set of 6	1.0 Nos
76	Gauging Trowel	150 mm	4.0 Nos
77	Concrete Mixer		1.0 Nos
78	Vibrating Table	100*100 cm	1.0 Nos
79	MDD Mould	Standard 100 mm	4.0 Nos
80	MDD Mould	Modified 150 mm	2.0 Nos
81	CBR Rammer	2.6kg	1.0 Nos
82	CBR Rammer	4.89kg	4.0 Nos
83	LL Device Hand Operated		1.0 Nos
84	Cone Penetrometer		1.0 Nos
85	Evaporating Basin	150 mm	2.0 Nos
86	CBR Load Frame		1.0 Nos
87	CBR Mould Mild with collar & Base Plate	150 mm	24.0 Nos
88	Surcharge weight	Annular (2.5 kg)	24.0 Nos
89	Surcharge weight	Slotted (2.5 kg)	24.0 Nos
90	Perforated Plate		24.0 Nos
91	Spacer Disk		2.0 Nos
92	Straight Edge	300 mm	2.0 Nos
93	PL appratus		2.0 Nos
94	RMM Digital wt. Balance		4.0 Nos
95	Sand Pouring Cylinder	100 mm	2.0 Nos
96	Tray for Sand Pouring Cylinder		2.0 Nos
97	Container for Sand Pouring Cylinder		2.0 Nos
98	Sand Pouring Cylinder	150 mm	1.0 Nos
99	Tray for Sand Pouring Cylinder		1.0 Nos
100	Container for Sand Pouring Cylinder		1.0 Nos

4-L of NH 37 from design Ch 0+020 on NH-8 near Karimganj to design Chainage 14+380 near Sutarkandi (Spur Connectivity to Indo/Bangladesh Border) Silchar-Churaibari Pkg-7 in the State of Assam on HAM mode.

101	Sand Pouring Cylinder	200 mm	2.0 Nos
102	Tray for Sand Pouring Cylinder		2.0 Nos
103	Container for Sand Pouring Cylinder		2.0 Nos
104	Moisture Cane	50mm	50.0 Nos
105	Moisture Cane	75mm	70.0 Nos
106	Moisture Cane	100mm	70.0 Nos
107	Calcium carbide	500 gm.	10 Bottle
108	Proving Ring	25KN	2.0 Nos
109	Proving Ring	50KN	2.0 Nos
110	Dial Gauge	0.01*25mm	4.0 Nos
111	Measuring Tape	5 Metre	2.0 Nos
112	Measuring Tape	30 Metre	2.0 Nos
113	Stopwatch		2.0 Nos
114	Standard Sand (Grade-1)	25 Kg	5 Bags
115	Standard Sand (Grade-2)	25 Kg	5 Bags
116	Standard Sand (Grade-3)	25 Kg	5 Bags
117	Enamel Tray	600*450*50	6.0 Nos
118	Enamel Tray	250mm	20.0 Nos
119	GI Tray	1000*1000*100	2.0 Nos
120	Enamel Tray	300*250*40	6.0 Nos
121	Filter Paper for CBR	150 mm	10 Packet
122	Rubber Mallet		4.0 Nos
123	Nylon Hammer		2.0 Nos
124	Filter Paper for Marshall Test	100 mm	10 Packet
125	Measuring Cylinder Borosill	100 ml	20.0 Nos
126	Measuring Cylinder Plastic	250 ml	2.0 Nos
127	Measuring Cylinder Glass	250 ml	2.0 Nos
128	Measuring Cylinder Plastic	500 ml	2.0 Nos
129	Measuring Cylinder Plastic	1000 ml	2.0 Nos
130	Vernier Caliver	300 mm	1.0 Nos
131	Digital Thermometer	Pen Type	2.0 Nos
132	Rain Gauge		1.0 Nos
133	Gas Stove Single Burner		2.0 Nos
134	Hammer with Handle	500 gm.	4.0 Nos
135	Chiesel	25*300 mm	4.0 Nos
136	Density Spoon		4.0 Nos
137	Finishing Trowel		10.0 Nos
138	Mashinory Trowel		10.0 Nos
139	Spade		2.0 Nos
140	Shovel		2.0 Nos
141	Round Hot Plate		1.0 Nos
142	Wash Bottle Plastic	500 ml	1.0 Nos
143	Wash Bottle Plastic	1000 ml	1.0 Nos
144	Ghamela GI		2.0 Nos
145	Hydrometer	SG=1.0-1.5	2.0 Nos
146	Density Hydrometer	SG=0.80-0.85	2.0 Nos
147	Hand Gloves		5.0 Nos
148	Hand Gloves Rubber		5.0 Nos
149	Scoop		4.0 Nos
150	Measuring Scoop	1000 ml	2.0 Nos

4-L of NH 37 from design Ch 0+020 on NH-8 near Karimganj to design Chainage 14+380 near Sutarkandi (Spur Connectivity to Indo/Bangladesh Border) Silchar-Churaibari Pkg-7 in the State of Assam on HAM mode.

151	Spatula		4.0 Nos
152	Pneumatic Scooter Wheel	4.18 C ft	1.0 Nos
153	Beam Mould	10*10*50 cm	9.0 Nos
154	Cylindrical Mould	150*300 mm	3.0 Nos
155	Marsh Cone Funnel		2.0 Nos
156	PH Meter		2.0 Nos
157	TDS Meter		2.0 Nos
158	Hot Air Oven Digital	24*24 Inch	1.0 Nos
159	Hot Air Oven Thermostat	18*18 Inch	1.0 Nos
160	Buoyancy Balance Apparatus		1.0 Nos

4-L of NH 37 from design Ch 0+020 on NH-8 near Karimganj to design Chainage 14+380 near Sutarkandi (Spur Connectivity to Indo/Bangladesh Border) Silchar-Churaibari Pkg-7 in the State of Assam on HAM mode.

11.1 Outward Letter

Sr. No.	Letter No.	Date	Subject	To
1	<u>MKCIL/ASSAM/PKG -07/496</u>	02-12-25	Reimbursement of 50% of IE Expenses - Reg".	The Regional Office - Guwahati , NHIDCL (MoRT&H),
2	<u>MKCIL/ASSAM/PKG -07/498</u>	03-12-25	Submission of Consent Letter of DRB Member.	The GM, NHIDCL
3	<u>MKCIL/ASSAM/PKG -07/502</u>	05-12-25	"Submission of Detailed Cost Estimate along with design and drawing of Service Road / Slip Road under Article 16 (COS)"	TL (TASPL)
4	<u>MKCIL/ASSAM/PKG -07/503</u>	05-12-25	Submission profile & credential of HEXATRON INDUSTRIES LIMITED for Source approval of admixture.	TL (TASPL)
5	<u>MKCIL/ASSAM/PKG -07/504</u>	05-12-25	Regarding Compliances of Observations on Submitted Design and Drawing for Major Bridge at Ch. 00+526 (3x35m)	TL (TASPL)
6	<u>MKCIL/ASSAM/PKG -07/505</u>	05-12-25	Regarding Compliances of Observations on Submitted Design and Drawing for Major Bridge at Ch. 5+332 (3x37.50m)	TL (TASPL)
7	<u>MKCIL/ASSAM/PKG -07/509</u>	06-12-25	Submission of GSB Mix Design (Grading-V).	TL (TASPL)
8	<u>MKCIL/ASSAM/PKG -07/510</u>	06-12-25	Submission of Monthly Progress Report for the month of November-2025.	TL (TASPL)
9	<u>MKCIL/ASSAM/PKG -07/514</u>	09-12-25	Regarding Compliance of Observations on Submitted Design and Drawing for LVUP at Ch.10+834 (1x18.0m)	TL (TASPL)
10	<u>MKCIL/ASSAM/PKG -07/518</u>	11-12-25	Regarding Compliance of Observation on GAD for Precast Box Culvert Ch.13+740 (1x2x2)	TL (TASPL)
11	<u>MKCIL/ASSAM/PKG -07/519</u>	11-12-25	Regarding Compliance of Observation on GAD for Precast Box Culvert Ch.03+418 (1x2x2)	TL (TASPL)
12	<u>MKCIL/ASSAM/PKG -07/523</u>	13-12-25	Submission profile & credential of DM Enterprises SILAFINE D 86 for Source approval of Micro silica.	TL (TASPL)
13	<u>MKCIL/ASSAM/PKG -07/524</u>	13-12-25	Submission profile & credential of Berger for Source approval of admixture & HS Super grout.	TL (TASPL)
14	<u>MKCIL/ASSAM/PKG -07/525</u>	13-12-25	Submission profile & credential of CHRYSO for Source approval of admixture, Super grout & Micro Silica.	TL (TASPL)
15	<u>MKCIL/ASSAM/PKG -07/528</u>	15-12-25	Notification of Force majeure event under clause 28.5 of Concession Agreement regarding hindrance to project work due to closure of Gammon Bridge on NH-6"	TL (TASPL)
16	<u>MKCIL/ASSAM/PKG -07/532</u>	17-12-25	Regarding Compliance of Observations on Submitted Design and Drawing for SVUP at Ch.03+728 (1x7.0m)	TL (TASPL)
17	<u>MKCIL/ASSAM/PKG -07/535</u>	22-12-25	Authorization for Signing of Payment Milestone Bills and Official Correspondence".	GM (NHIDCL)

4-L of NH 37 from design Ch 0+020 on NH-8 near Karimganj to design Chainage 14+380 near Sutarkandi (Spur Connectivity to Indo/Bangladesh Border) Silchar-Churaibari Pkg-7 in the State of Assam on HAM mode.

18	<u>MKCIL/ASSAM/PKG-07/536</u>	22-12-25	Undertaking for casting of pile cap	TL (TASPL)
19	<u>MKCIL/ASSAM/PKG-07/537</u>	23-12-25	Submission profile & Credential of Universal Test House For Third Party	TL (TASPL)
20	<u>MKCIL/ASSAM/PKG-07/540</u>	25-12-25	Submission of Payment Milestone-11 (11)."	TL (TASPL)
21	<u>MKCIL/ASSAM/PKG-07/542</u>	27-12-25	Submission of test report of Borrow Area Soil for Approval to be used in Embankment/Subgrade".	TL (TASPL)
22	<u>MKCIL/ASSAM/PKG-07/545</u>	29-12-25	Submission of Company Profile & Credential of M/s AMRIT CEMENT LIMITED for Source Approval of Cement".	TL (TASPL)

11.2 Inward Letter (NHIDCL & TASPL)

Sr. No.	Letter No.	Date	Subject	From
1	<u>TASPL-MAV/NH-37/MKCIL/2025/Dec/115</u>	05-12-25	VUP Design and GAD Review (CH 3+000 & 5+622).Reg	TASPL
2	<u>TASPL-MAV/NH-37/MKCIL/2025/Dec/116</u>	05-12-25	LVUP Design and GAD Review (Ch. 10+834). Reg	TASPL
3	<u>TASPL-MAV/NH-37/MKCIL/2025/Dec/117</u>	06-12-25	Weekly Progress Report	TASPL
4	<u>TASPL-MAV/NH-37/MKCIL/2025/Dec/117</u>	06-12-25	Precast Box Culvert Design and GAD Review (Ch. 2+440, 5+126 & 12+223). Reg	TASPL
5	<u>TASPL-MAV/NH-37/MKCIL/2025/Dec/118</u>	06-12-25	Review on compliance Box Culvert Design & Drawing at (CH-2+440, CH-5+126 & CH-12+223). Reg	TASPL
6	<u>TASPL-MAV/NH-37/MKCIL/2025/Dec/119</u>	06-12-25	Review on Compliances on Design & Drawings of MNB at (Ch. 6+313, Ch. 7+306, Ch. 9+003, Ch. 9+293). Reg	TASPL
7	<u>TASPL-MAV/NH-37/MKCIL/2025/Dec/120</u>	06-12-25	Observation on Submission of GAD for Precast Box Culvert at Ch. 03+418 (1x2x2). Reg	TASPL
8	<u>TASPL-MAV/NH-37/MKCIL/2025/Dec/121</u>	08-12-25	Review on Compliance Submission of Observation on D&D of MJB (Ch.02+893). Reg	TASPL
9	<u>TASPL-MAV/NH-37/MKCIL/2025/Dec/122</u>	08-12-25	Compliances of Observations on Design and Drawing for Major Bridge (Ch. 00+526). Reg	TASPL
10	<u>TASPL-MAV/NH-37/MKCIL/2025/Dec/123</u>	08-12-25	Compliance Submission of Observation on Design & Drawings of MNB(Ch. 14+195). Reg	TASPL
11	<u>TASPL-MAV/NH-37/MKCIL/2025/Dec/124</u>	08-12-25	Compliance Submission of Design & Drawing for ROB at (Ch. 04+624). Reg	TASPL

4-L of NH 37 from design Ch 0+020 on NH-8 near Karimganj to design Chainage 14+380 near Sutarkandi (Spur Connectivity to Indo/Bangladesh Border) Silchar-Churaibari Pkg-7 in the State of Assam on HAM mode.

12	<u>TASPL-MAV/NH-37/MKCIL/2025/Dec/125</u>	10.12.2025	Compliances of Observations on Submitted Design and Drawing for Major Bridge at Ch. 5+322	TASPL
13	<u>TASPL-MAV/NH-37/MKCIL/2025/Dec/126</u>	10.12.2025	Review on Compliance Submission of Observation on D&D of MNB at (Ch. 11+351). Reg	TASPL
14	<u>TASPL-MAV/NH-37/MKCIL/2025/Dec/129</u>	13-12-25	Reg. Construction of pile cap for major bridge at ch.2+893 and ROB at Ch. 4+643	TASPL
15	<u>TASPL-MAV/NH-37/MKCIL/2025/Dec/130</u>	13-12-25	Reg:- observations of MPR for the month of Nov 2025	TASPL
16	TASPL-MAV/NH-37/MKCIL/2025/Dec/132	26-12-25	Payment during Construction period on Achievement of Payment Milestone-II).	TASPL
17	TASPL-MAV/NH-37/MKCIL/2025/Dec/133	30-12-25	Revision In The Plan& Profile	TASPL

4-L of NH 37 from design Ch 0+020 on NH-8 near Karimganj to design Chainage 14+380 near Sutarkandi (Spur Connectivity to Indo/Bangladesh Border) Silchar-Churaibari Pkg-7 in the State of Assam on HAM mode.

CHAPTER-12

NON-CONFORMANCE REPORT

Sl. No.	NCR Letter reference no.	Date	NCR No	Subject	Closure By letter No.	Date	Remarks
1	TAPSL-MAV/NH-37/MKCIL/2025/OC T/53	05.08.2025	1	Non-Compliance with Safety Norms at Chainage 12+800 to 13+500 (LHS)."	MKCIL/ASSAM/PK G-07/336	22.08.2025	
2	TAPSL-MAV/NH-37/MKCIL/2025/OC T/91	10.10.2025	2	Non-Compliance with Safety Norms at Chainage 12+300 to 12+500 (LHS)."	MKCIL/ASSAM/PK G-7/409	14.10.2025	

4-L of NH 37 from design Ch 0+020 on NH-8 near Karimganj to design Chainage 14+380 near Sutarkandi (Spur Connectivity to Indo/Bangladesh Border) Silchar-Churaibari Pkg-7 in the State of Assam on HAM mode.

**CHAPTER-13
WEATHER REPORT**

Sl no.	Date	Temperature (In °c)		Humidity (In %)		Rainfall (mm)	Weather Condition	Remarks
		Maximum	Minimum	Maximum	Minimum			
1	01-12-2025	23.6	21.0	82.0	76.0	0.00	Sunny	
2	02-12-2025	22.8	21.0	76.0	70.0	0.00	Sunny	
3	03-12-2025	22.7	20.0	79.0	76.0	0.00	Sunny	
4	04-12-2025	22.6	21.5	78.0	75.0	0.00	Sunny	
5	05-12-2025	21.5	19.9	72.0	64.0	0.00	Rainy	
6	06-12-2025	21.2	19.7	68.0	64.0	0.00	Sunny	
7	07-12-2025	20.5	18.9	72.0	68.0	0.00	Sunny	
8	08-12-2025	21.2	19.9	70.0	66.0	0.00	Sunny	
9	09-12-2025	20.7	19.0	69.0	65.0	0.00	Sunny	
10	10-12-2025	20.3	18.7	68.0	64.0	0.00	Sunny	
11	11-12-2025	18.9	17.1	68.0	66.0	0.00	Sunny	
12	12-12-2025	20.4	18.9	72.0	68.0	0.00	Sunny	
13	13-12-2025	20.9	17.6	71.0	63.0	0.00	Sunny	
14	14-12-2025	21.7	20.0	67.0	60.0	0.00	Sunny	
15	15-12-2025	21.9	20.1	71.0	65.0	0.00	Sunny	
16	16-12-2025	22	20.3	73.0	67.0	0.00	Sunny	
17	17-12-2025	21.8	20.2	73.0	66.0	0.00	Sunny	
18	18-12-2025	21.3	20.0	64.0	58.0	0.00	Sunny	
19	19-12-2025	21.5	21.4	65.0	62.0	0.00	Sunny	
20	20-12-2025	21	19.2	68.0	63.0	0.00	Sunny	
21	21-12-2025	21	19.1	63.0	61.0	0.00	Sunny	
22	22-12-2025	20.8	19.4	65.0	62.0	0.00	Sunny	
23	23-12-2025	21.4	19.9	69.0	63.0	0.00	Sunny	
24	24-12-2025	21.9	21.2	68.0	65.0	0.00	Sunny	
25	25-12-2025	21.5	20.9	69.0	65.0	0.00	Sunny	
26	26-12-2025	20.7	19.9	67.0	62.0	0.00	Sunny	
27	27-12-2025	20.6	19.7	67.0	62.0	0.00	Sunny	
28	28-12-2025	21.6	20.7	68.0	66.0	0.00	Sunny	
29	29-12-2025	20.5	20.0	67.0	65.0	0.00	Sunny	
30	30-12-2025	20	19.0	67.0	64.0	0.00	Sunny	
31	31-12-2025	19.1	18.1	70.0	65.0			

Rainfall Data				
Sr.no.	Description	Total Rainfall	Up to previous month	This month
1	Rainfall	4092.0	4092.0	0

The maximum & minimum weather records are summarized below:

TEMPERATURE/ RAINFALL PERIOD: 1 st December, 2025 to 31 st December, 2025				
Temperature		Rainfall		
Maximum (in ° C)	Minimum (in ° C)	Maximum (in mm)	Minimum (in mm)	Total Days
23.6	17.1	0	0	0

4-L of NH 37 from design Ch 0+020 on NH-8 near Karimganj to design Chainage 14+380 near Sutarkandi (Spur Connectivity to Indo/Bangladesh Border) Silchar-Churaibari Pkg-7 in the State of Assam on HAM mode.

CHAPTER-14
ACCIDENT REPORT

NIL

4-L of NH 37 from design Ch 0+020 on NH-8 near Karimganj to design Chainage 14+380 near Sutarkandi (Spur Connectivity to Indo/Bangladesh Border) Silchar-Churaibari Pkg-7 in the State of Assam on HAM mode.

CHAPTER-15

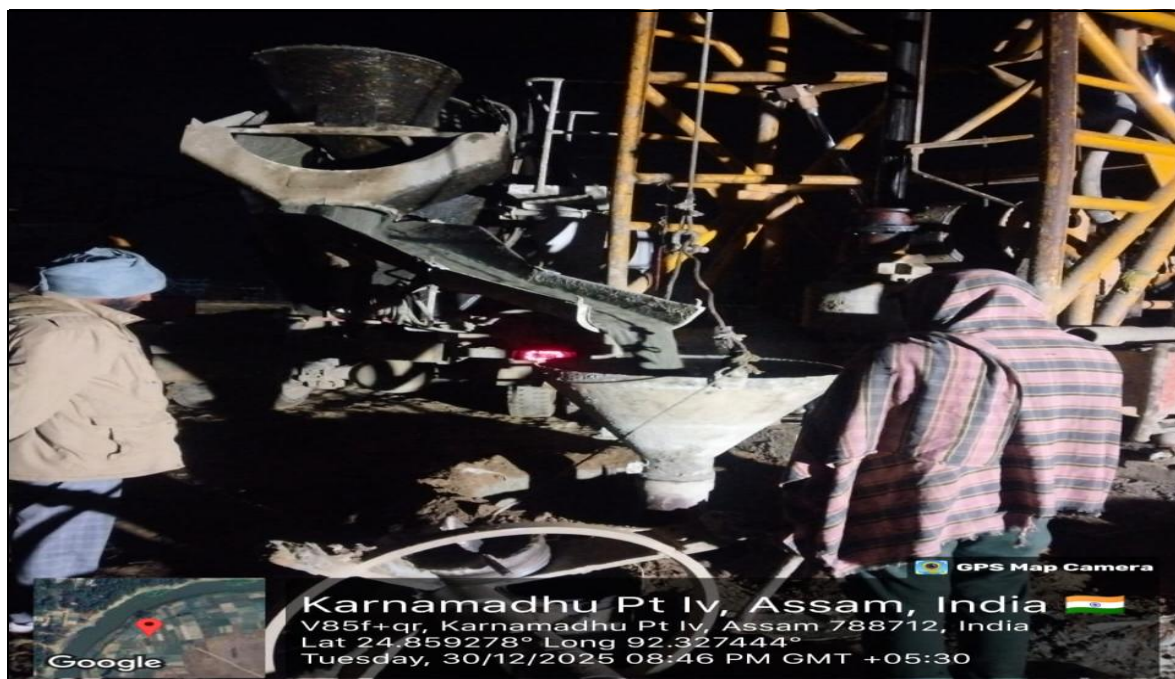
ROAD MAINTENANCE & SAFETY REPORT

The Traffic Safety Arrangements during the execution of works is being carried out by the Concessionaire for safe movement of vehicles on the project highway. The Concessionaire has provided sufficient road signs, temporary barriers, gunny bags filled with soil with reflective stickers etc. at the construction sites.

4-L of NH 37 from design Ch 0+020 on NH-8 near Karimganj to design Chainage 14+380 near Sutarkandi (Spur Connectivity to Indo/Bangladesh Border) Silchar-Churaibari Pkg-7 in the State of Assam on HAM mode.

CHAPTER-16

PROJECT PROGRESS PHOTOGRAPHS



Piling Work in Progress at 5+332 MJB



3+886 LVUP 3rd Lift Concrete Work In Progress

4-L of NH 37 from design Ch 0+020 on NH-8 near Karimganj to design Chainage 14+380 near Sutarkandi (Spur Connectivity to Indo/Bangladesh Border) Silchar-Churaibari Pkg-7 in the State of Assam on HAM mode.



BOX Culvert Backfilling work in Progress 5+920 BHS



ROB A1 Abutment Pile Cap in Progress at 4+624 ROB

4-L of NH 37 from design Ch 0+020 on NH-8 near Karimganj to design Chainage 14+380 near Sutarkandi (Spur Connectivity to Indo/Bangladesh Border) Silchar-Churaibari Pkg-7 in the State of Assam on HAM mode.



Toe Wall 1st Lift In Progress at 10+769



Embankment Layer in Progress at 6+020 To 6+180 BHS