




4-L of NH 37 from design Ch 0+020 on NH-8 near Karimganj to design Chainage 14+380 near Sutarkandi (Spur Connectivity to Indo/Bangladesh Border) Silchar-Churaibari Pkg-7 in the State of Assam on HAM mode.

Monthly Progress Report

MAY - 2026



<p>Authority</p>		<p>National Highways Infrastructure Development Corporation Limited</p>
<p>Independent Engineer</p>		<p>M/s Technocrafts Advisory Services Private Limited in association with M/s MAV Associates LLP</p>
<p>Concessionaire</p>		<p>MKC Badarpur Churaibari Kamakhya (PKG-7) Highways Pvt. Ltd.</p>

4-L of NH 37 from design Ch 0+020 on NH-8 near Karimganj to design Chainage 14+380 near Sutarkandi (Spur Connectivity to Indo/Bangladesh Border) Silchar-Churaibari Pkg-7 in the State of Assam on HAM mode.

TABLE OF CONTENTS

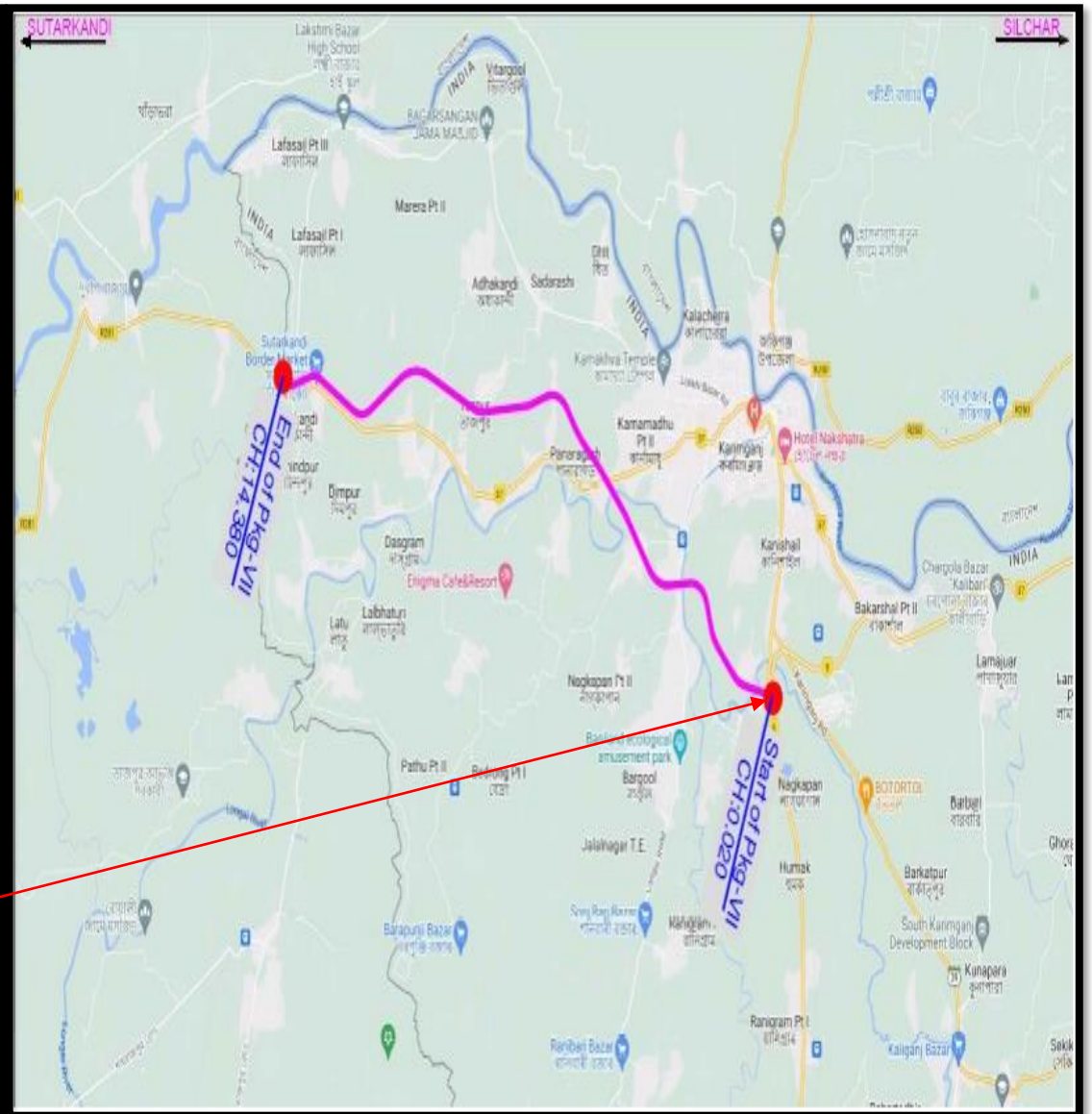
CHAPTERS	DESCRIPTIONS	PAGES
	TABLE OF CONTENTS	
	Project Road Location Map / Index Map	
	EXECUTIVE SUMMARY	
	1. The Project Road	
	2. Mobilization	
	3. Pre-Construction Activity	
	4. EPC Contractor	
	5. Design & Drawing	
	6. Work Program	
	7. Quality Control & Material	
	8. Supervision and Monitoring of Project works	
	9. Site Visit and Meeting	
	10. Schedule Completion Date	
	11. Operation and Maintenance (O&M)	
	12. Area of Concern	
	13. Current Issues	
1	INTRODUCTION	
	General	
2	CONTRACT DATA	
3	SALIENT FEATURES OF PROJECT HIGHWAY	
	3.1 Pavement Composition (MCW)	
	3.2 Details of New/ Widening of Structures and Project Facilities	
4	SCOPE OF WORKS AND PROJECT FACILITIES	
	4.1 Scope of Works	
	4.2 Project Facilities	
5	PRE-CONSTRUCTION ACTIVITY	
	5.1 Obligations	
	5.2 Shifting of Utilities	
	5.3 Tree Cutting	
	5.4 Land Acquisition	

4-L of NH 37 from design Ch 0+020 on NH-8 near Karimganj to design Chainage 14+380 near Sutarkandi (Spur Connectivity to Indo/Bangladesh Border) Silchar-Churaibari Pkg-7 in the State of Assam on HAM mode.

	5.5 Hindrance, Payment Status and LA Status	
6	MOBILIZATION	
	6.1 Manpower Mobilization of Concessionaire	
	6.2 Organization Chart of Concessionaire	
7	DEPLOYMENT OF PLANTS AND EQUIPMENT / PROJECT SET UP PLAN	
	7.1 Plants and Equipment Deployed	
8	DESIGN AND DRAWING	
	8.1 Design	
	8.2 Drawing	
	8.3 Status of Drawings	
9	PROJECT WORK PROGRESS	
	9.1 Work Progress	
	9.2 Structure work Progress	
	9.3 Weightages of Components	
	9.4 S Curve of Project	
	9.5 Detailed Highway & Structure Works Progress	
10	QUALITY CONTROL AND MATERIAL	
	10.1 Quality Control	
	10.2 Site Laboratory	
	10.3 Material Testing	
	10.3.1 Soli and Aggregates	
	10.3.2 Cement	
	10.3.3 Reinforcement Steel	
	10.3.4 Status of Material Sources Approvals & Mix Designs	
	10.3.5 Details of QC Test conducted during the month	
11	CORRESPONDENCE	
12	NON-CONFORMANCE REPORT	
13	WEATHER REPORT	
14	ACCIDENT REPORT	
15	ROAD MAINTENANCE AND SAFETY REPORT	
16	PROJECT PROGRESS PHOTOGRAPHS	

4-L of NH 37 from design Ch 0+020 on NH-8 near Karimganj to design Chainage 14+380 near Sutarkandi (Spur Connectivity to Indo/Bangladesh Border)
Silchar-Churaibari Pkg-7 in the State of Assam on HAM mode.

PROJECT LOCATION MAP / INDEX MAP



4-L of NH 37 from design Ch 0+020 on NH-8 near Karimganj to design Chainage 14+380 near Sutarkandi (Spur Connectivity to Indo/Bangladesh Border) Silchar-Churaibari Pkg-7 in the State of Assam on HAM mode.

EXECUTIVE SUMMARY

The Concessionaire has signed the Concession Agreement with National Highway Infrastructure Development Corporation Limited (NHIDCL) on dated September 17, 2024. This Executive Summary presents the works progress of the Project Highway during the construction period from February 28, 2025 to February 27, 2027.

1. The Project Road:

4-L of NH 37 from design Ch 00+020 on NH-8 near Karimganj to design Chainage 14+380 near Sutarkandi (Spur Connectivity to Indo/Bangladesh Border) Silchar-Churaibari Pkg-7 in the State of Assam on HAM mode.

2. Mobilization:

The Concessionaire has mobilized the required Engineers/ Staff Personnel, Machineries/Equipment's, Plants and established main Base Camp at CH: - 5+600 LHS (Darakona).

The details of Key staff personnel deployed are highlighted in the Chapter-6 of this report. The details of deployed Plants and Machineries are included in Chapter-7 of this report.

3. Pre-Construction Activity:

The Details of pre-construction activities have been included in Chapter-5 of this report.

4. EPC Contractor:

MKC Infrastructure Limited the details of project highway works have been included in Chapter-09 of this report.

5. Design and Drawing

The details of design and drawing status have been included in this report on Chapter 8.

7. Work Program:

At the time of commencement of works, the Concessionaire submitted the Stage wise completion schedule Work Program Vide Letter No. MKCIL/ASSAM/PKG-07/162, dated 17.04.2025 for Authority/IE's approval. Based on the monthly works plan, the works is being carried out by the Concessionaire.

8. Quality Control and Material:

The works is being carried out by the Concessionaire as per Quality Assurance Plan submitted to Authority Vide Letter MKCIL/ASSAM/PKG-07/139 on dated 07.04.2025. Each construction activity is being checked/verified as per the RFI's submitted to Authority/ IE by the Concessionaire.

9. Supervision and Monitoring of Project works:

The Authority/ IE along with the concessionaire is supervising and monitoring the execution of works as per requirements of Standard/ Specifications. The monitoring of works is being carried out through the RFI submitted by the Concessionaire and its approval/ rejection after necessary checking/ verification by the Authority/ IE.

4-L of NH 37 from design Ch 0+020 on NH-8 near Karimganj to design Chainage 14+380 near Sutarkandi (Spur Connectivity to Indo/Bangladesh Border) Silchar-Churaibari Pkg-7 in the State of Assam on HAM mode.

10. Site Visit and Meeting:

The Authority/ IE Engineers are regularly visiting the Project Highway.

11. Schedule Completion Date:

As per Schedule-G of the Concession Agreement shall occur on the 730th day from the Appointed Date. The declared Appointed Date being February 28, 2025, the Scheduled completion Date shall occur on February 27, 2027.

12. Operation and Maintenance (O&M):

O&M Obligations – During Operation Period, the Concessionaire shall operate and maintain the project in accordance with this Agreement either by itself, or through the O&M Contractor and if required, modify repair or otherwise make improvements to the Project to comply with the provisions of this Agreement, Applicable Laws and Applicable Permits, and conform to Specifications and Standards and Good industry Practice. The obligations of the concessionaire shall be as per Article 17.b

13. Area of Concern/ Availability of site for work:

Procurement of ROW- The existing ROW and the stretches of 14.360 km. are subjected to following:

a) Stretches/ Hindered Free Land 11.51 Km out of 14.36 Km:

Stretches/ Hindered Free Land				Encumbrances/ Hindered Land		
Sr. No.	Side	Length (Km)	%	Side	Length (Km)	%
1.	BHS	12.200	90.20%	BHS	2.180	10.80%

b) Hindered due to Tree Cutting:

Description	Total Nos.	Cutting Tree	Balance	Impacted Length (km)	Remarks
Total Trees	407	256	151	1.0	

c) Encumbrances due to Religious Structure:

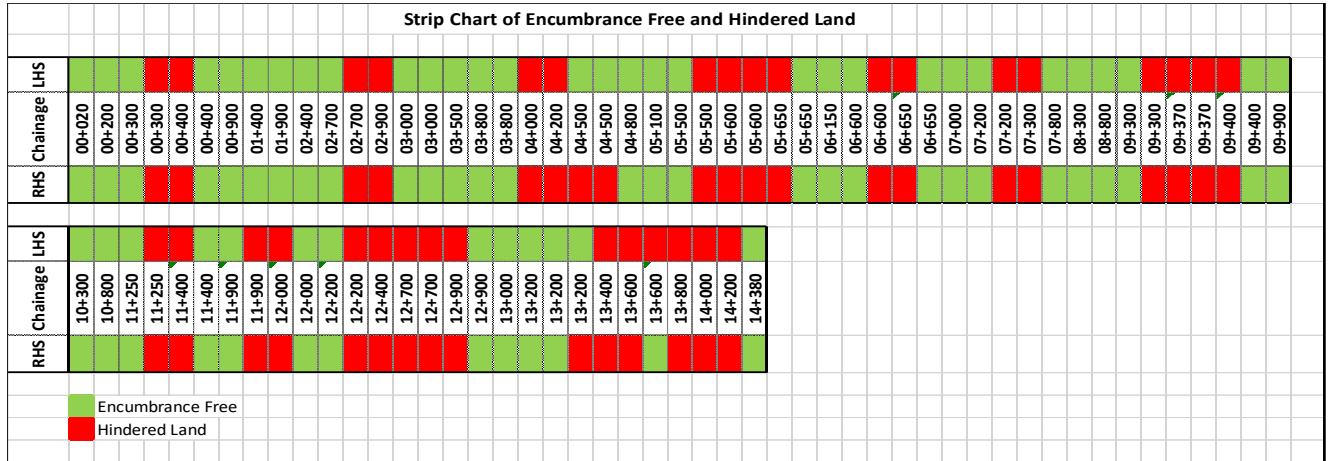
Sr. No.	Types	Chainage	Side	Status	Remarks
1.	Temple	4+150	LHS	Shifting in Progress	
2.	Masjid	4+500	BHS		Delay by CALA

4-L of NH 37 from design Ch 0+020 on NH-8 near Karimganj to design Chainage 14+380 near Sutarkandi (Spur Connectivity to Indo/Bangladesh Border) Silchar-Churaibari Pkg-7 in the State of Assam on HAM mode.

d) Details of Hidered Land:

DETAILS OF ENCUMBRANCES WITHIN ROW							
Sr. No	Chainage		Side	Total Length (KM)	Description	Work Affected	Remarks
	From	To					
1	0+250	0+350	BHS	100.00	Brick Industry	Earth Work	
2	2+700	2+850	BHS	150.00	Residential Houses	RE Wall	
3	3+650	3+700	BHS	50.00	Residential Houses	Earth work	
4	3+900	3+980	BHS	80.00	Assam Type House & Shade	Earth Work	
4	4+080	4+180	LHS	100.00	Assam Type House& Temple	Earth Work	
5	4+200	4+300	BHS	100.00	Assam Type House	Earth Work	
5	4+420	4+550	RHS	130.00	Masjid & Kabristan	Earth Work	
6	4+650	4+700	RHS	50.00	Assam Type House	Earth Work	
6	5+400	5+450	BHS	50.00	Assam Type House	Earth Work	
7	5+450	5+480	BHS	30.00	Assam Type residential houses	Earth work	
7	5+550	5+650	BHS	100.00	Assam Type residential houses	VUP	
8	6+600	6+650	BHS	50.00	RCC & Assam Type Houses	Box-culvert	
8	7+250	7+300	BHS	50.00	Assam/RCC Type Houses & Kabristan	Box-culvert	
9	9+280	9+400	BHS	120.00	Assam Type residential houses	Toe Wall and earth work	
9	10+900	10+950	BHS	50.00	Assam Type residential houses	Earth work	
10	11+250	11+400	BHS	150.00	Assam Type residential houses	Earth Work	
10	12+250	12+450	BHS	200.00	Assam Type residential houses	Earth Work	
11	12+590	12+620	BHS	30.00	Assam Type residential houses	Earth Work	
11	12+800	12+900	BHS	100.00	Assam Type residential houses	Earth Work	
12	13+100	13+200	RHS	100.00	Assam Type residential houses	Earth Work	
12	13+400	13+500	BHS	100.00	Assam Type residential houses	Earth Work	
13	13+650	13+680	LHS	30.00	Assam Type residential houses	Earth Work	
13	13+800	13+900	BHS	100.00	Assam Type residential houses	Earth Work	
14	13+950	14+050	LHS	100.00	LPAI Boundary wall and Gate	Earth Work	
14	14+150	14+200	BHS	50.00	ICP-BSF Gate	Minor Bridge	
15	14+240	14+250	RHS	10.00	ICP-BSF Vehicles Scanning Machine	Earth Work	
Total Hindered Length				2180.00			

4-L of NH 37 from design Ch 0+020 on NH-8 near Karimganj to design Chainage 14+380 near Sutarkandi (Spur Connectivity to Indo/Bangladesh Border) Silchar-Churaibari Pkg-7 in the State of Assam on HAM mode.



Current Issues:-

- a) **Non-availability of land:-** As per the Concession Agreement, 100% of the land is to be handed over to the Concessionaire within 90 days from the Appointed Date. However, only approximately 80.20% of the land is currently free from encumbrances (refer the Concessionaire's letter no. MKCIL/ASSAM/PKG-07/490 dated 29.11.2025)

As per Joint Handover Memorandum (Appendix-I) dated 28.02.2025

SUMMARY OF LAND ACQUISITION & CLEARANCES

Sl. No	Total Land Required (in Ha)	Available Land (in Ha)	Remaining Land (In Ha)	% Available Land	Hindrance free length (in Km)	% Available hindrance free length %
1	63.59	56.17	7.42	88.33%	11.510 Km	80.20%

Note: The hindrance free length is calculated based on the right of way required against construction zone. M/s MKC Badarpur Churaibari Kamakhya (Pkg-7) Highways Pvt. Ltd will not claim any damages from the Authority as specified in Cl 4.2 of Concession Agreement for the period delay and time extension in accordance with Cl 4.1.2 of Concession Agreement.

Authorized Representative:



M/s MKC Badarpur Churaibari Kamakhya (Pkg-7) Highways Pvt. Ltd.

General Manager(P)

Signature
 General Manager (P)
 NHIDCL PMU-Karimganj
 Karimganj, Assam
 NHIDCL

Date: 28/02/25

Place: Karimganj

4-L of NH 37 from design Ch 0+020 on NH-8 near Karimganj to design Chainage 14+380 near Sutarkandi (Spur Connectivity to Indo/Bangladesh Border) Silchar-Churaibari Pkg-7 in the State of Assam on HAM mode.

b) Approval of Material Source:- Approval from the Independent Engineer is still pending for the proposed material sources, and admixtures (refer the Concessionaire's Chapter no. 10 & Table no 10.3.4)

c) Existing Road Maintenance: One time tender floated decision for maintenance of the existing road is pending by the end of the Authority.

The Concessionaire has submitted its concern regarding the deteriorated condition of the existing road and clarified that it has only a limited scope of work, which includes only pothole repairs. During the meeting held at HQ, NHIDCL, New Delhi under the chairmanship of the MD (NHIDCL), this issue was acknowledged by the Hon'ble MD (NHIDCL), who directed the PMU and RO to float a one-time tender for the maintenance of the existing road.

d) Non-Permission from PWD Authorities: - The Concessionaire has submitted its concern regarding the permission for using the PWD rural roads for carrying of forest materials under Bharat Mala Project vide letter no. MKCIL/ASSAM/PKG-07/176 dated 24.04.2025.

It is essential to transport forest materials such as aggregates, soil, sand, and other construction materials from the designated quarry and borrow areas to the project site.

These materials are to be transported through certain PWD rural roads, as these routes form the only available access between the material sources and the construction stretch.

However, the Karimganj PWD Divisional Officer has restricted the movement of construction vehicles carrying these materials through the said rural roads, which has caused a significant hindrance to the ongoing project works and may adversely affect the overall project timeline.

4-L of NH 37 from design Ch 0+020 on NH-8 near Karimganj to design Chainage 14+380 near Sutarkandi (Spur Connectivity to Indo/Bangladesh Border) Silchar-Churaibari Pkg-7 in the State of Assam on HAM mode.

CHAPTER-1

INTRODUCTION

General

The NHIDCL proposes to implement the development, maintenance, and management of the Spur from NH-8 near Karimganj to Sutarkandi (India-Bangladesh border) Km. 0.020 to Km. 14.380 into 4-lane access controlled corridor. The proposed project road has been selected to improve connectivity and reduce travel time from Assam to Tripura. Also, this connectivity will improve international road connectivity between India and Bangladesh. To achieve the above task, NHIDCL has appointed M/s. Aarvee Associates Architects Engineers and Consultants Pvt. Ltd. The Letter of Awarded was communicated vide letter No. NHIDCL / Assam / DPR / Silchar-Churaibari /222542/2581 and the agreement was signed on September 1st, 2023.

This executive summary is submitted along with the Final detailed project report to cover the key aspects of the project.

Project Overview

As described earlier the project road is a spur to NH-8 near Karimganj and ends at Sutarkandi. The proposed alignment passes through Karimganj district in the state of Assam connecting villages Karimganj, Fakirabazar, Jarpata and Sutarkandi.

4-L of NH 37 from design Ch 0+020 on NH-8 near Karimganj to design Chainage 14+380 near Sutarkandi (Spur Connectivity to Indo/Bangladesh Border) Silchar-Churaibari Pkg-7 in the State of Assam on HAM mode.

CHAPTER-2

CONTRACT DATA

Sr. No.	Items	Description
1.	Name of Project	4-L of NH 37 from design Ch 0+020 on NH-8 near Karimganj to design Chainage 14+380 near Sutarkandi (Spur Connectivity to Indo/Bangladesh Border) Silchar-Churaibari Pkg-7 in the State of Assam on HAM mode.
2.	Project Length	14.360 km
3.	Project Bid Cost	380.26 Cr.
4.	Authority	National Highways & Infrastructure Development Corporation Limited
5.	Independent Engineer	M/s Technocrats Advisory Services Private Limited in association with M/s MAV Associates LLP
6.	Concessionaire	MKC Badarpur Churaibari Kamakhya (PKG-7) Highways Private Limited
7.	Design Consultant	Geo Designs & Research Pvt. Ltd.
8.	DPR Consultant	Aarvee Associates Architects Engineers & Consultants Pvt. Ltd.
9.	LOA No. & Date	NHIDCL/ Assam/ NH-37/ Sil-Churai/ Pkg-VII/ 233357/ 3087 dated 11.03.2024
10.	Date of Concession Agreement	September 17, 2024
11.	Appointed Date	February 28, 2025
12.	Construction Period	730 days (from Appointed Date) [24-Months]
13.	Schedule Completion Date	February 27, 2027
14.	O&M Period	15 Years from the date of COD

4-L of NH 37 from design Ch 0+020 on NH-8 near Karimganj to design Chainage 14+380 near Sutarkandi (Spur Connectivity to Indo/Bangladesh Border) Silchar-Churaibari Pkg-7 in the State of Assam on HAM mode.

15.	Project Milestone	
	Milestone- I (Achieved on 15.01.2026)	<p>The Project Milestone-I shall occur on the date falling on the 256th (two hundred and fifty sixth) day from the Appointed Date (i.e., November 11, 2025)-</p> <p>(The concessionaire shall have expended not less than 20% of the total capital cost set forth in the Financial Package and the Concessionaire shall have commenced construction of the Project and achieved 20% Physical Progress)</p>
	Milestone- II (Achieved on 21.04.2026)	<p>438th Day from Appointed Date (i.e., May 12, 2026)- (Prior to the occurrence of Project Milestone-II, the Concessionaire shall have expended not less than 35% of the total capital cost set forth in the Financial Package. Provided, however, that at least 70% of the expenditure referred to hereinabove shall have been incurred on physical works which shall not include advances of any kind to any person or expenditure of any kind on plant and machinery and the concessionaire shall have commenced construction of the project and achieved 35% Physical Progress.).</p>
	Milestone- III	<p>620th Day from Appointed Date (i.e., November 10, 2026) (The concessionaire shall have commenced construction of all Project Facilities and expended not less than 75% of the total capital cost set forth in the Financial Package and the concessionaire shall have commenced construction of the Project and achieved 75% Physical Progress).</p>
	Scheduled Completion Date	<p>730th Day from Appointed Date (i.e., February 27, 2027)</p> <p>The concessionaire shall have completed the Project in accordance with the Concession Agreement.</p>

4-L of NH 37 from design Ch 0+020 on NH-8 near Karimganj to design Chainage 14+380 near Sutarkandi (Spur Connectivity to Indo/Bangladesh Border) Silchar-Churaibari Pkg-7 in the State of Assam on HAM mode.

CHAPTER -3

SALIENT FEATURES OF PROJECT HIGHWAY

3.1 Pavement Composition (For Main Carriage Way/ Service Road)

Section	Design Chainage		Stretch in Km.	Pavement Composition in mm.						
	From	To		Sub-Grade	R-GSB	R-WMM	DBM	BC	DLC	PQC
MCW	00+020	12+900	12.880	500.00	200.00	190.00	50.00	30.00	-	-
	12+900	14+380	1.480	500.00	150.00	-	-	-	150.00	180.00
				Sub-Grade	GSB	R-WMM	BC	-		
Service Road				500.00	200.00	185.00	30.00	-		

3.2 Details of New/ Widening of Structures and Project Facilities to be constructed along the project Highway:

Sr. No.	Description	Unit	As per CA	Remarks
1.	Railway over Bridge	New Construction	Nos.	1
2.	Major Bridge	New Construction	Nos.	3
3.	Minor Bridge	New Construction	Nos.	7
		Reconstruction	Nos.	1
4.	VUP	New Construction	Nos.	2
5.	LVUP	New Construction	Nos.	9
6.	SVUP	New Construction	Nos.	1
7.	Box Underpass	New Construction	Nos.	4
8.	Box Culvert	New Construction	Nos.	28
		Reconstruction	Nos.	4
		Additional	Nos.	20
9.	Pipe Culvert	Additional	Nos.	20
10.	Bus Bay		Nos.	2
11.	Major Junction		Nos.	2
12.	Minor Junction		Nos.	4
13.	W-beam Single faced metal crash barrier		Rmt.	17602
14.	Drain (covered)		Rmt.	2960

4-L of NH 37 from design Ch 0+020 on NH-8 near Karimganj to design Chainage 14+380 near Sutarkandi (Spur Connectivity to Indo/Bangladesh Border) Silchar-Churaibari Pkg-7 in the State of Assam on HAM mode.

CHAPTER -4

SCOPE OF THE WORKS AND PROJECT FACILITIES

4.1 Scope of Works

The Schedule-B of the Concession Agreement specifies the scope of works. The broad scope of the works includes the following:

- Reconstruction of existing 2 lane carriageway to 4 lane divided carriageway including strengthening existing carriageway by providing bituminous overlays in accordance with the Specifications and Standards.
- Construction of 1- ROB, 3- Major Bridge, 8- Minor Bridge, 16- Underpasses, 52- Culverts.
- Construction of Slip Road of 4.16 Km

4.2 Project Facilities

The Schedule-C of the Concession Agreement specifies the project facilities to be constructed for the project highway. The project facilities include the following:

- a) Roadside Furniture
 - i. Kilometer and Hectometer Stones
 - ii. Traffic Signs
 - iii. Overhead Sign
 - iv. Road Marking
 - v. Road Delineators
 - vi. Reflective Pavement Markers & Solar Studs
 - vii. Traffic Impact Attenuators
 - viii. Boundary wall and Fencing
- b) Operation and Maintenance centres
- c) Way side Amenities/ Service Areas
- d) Bus Bay and Bus Shelter
- e) Pedestrian Facilities
- f) Highway Lighting
- g) Rainwater Harvesting
- h) Environmental Management Plan
- i) Advanced Traffic Management System (ATMS)
- j) Highway Petrol Unit
- k) Emergency Medical Services
- l) Crane Services

4-L of NH 37 from design Ch 0+020 on NH-8 near Karimganj to design Chainage 14+380 near Sutarkandi (Spur Connectivity to Indo/Bangladesh Border) Silchar-Churaibari Pkg-7 in the State of Assam on HAM mode.

CHAPTER -5

PRE-CONSTRUCTION ACTIVITIES

5.1 Obligations

Obligations of Authority-

Sr. No.	Clause No.	Obligation	Status	Remark/ Reference
1	Clause 4.1.2	Condition Precedent	Done	MKCIL/ASSAM/PKG-07/261
2	Article 11	Utilities, Associated Roads and Trees	In Progress	
3	Clause 18.1.2	Safety Consultant	Awaited	
4	Article 21	Appointment of Independent Engineer	Done	Partially Mobilized
5	Clause 10.3	Joint Memorandum	Done	

Obligations of Concessionaire-

Sr. No.	Clause No.	Obligation	Status	Remark/ Reference
1	Clause 9.1	Performance Security	Submitted	
2	Article 11	Shifting and Relocation Electrical Utilities	In Progress	
3	Article 26	Insurance	Done	
4	Clause 4.1.3 (Schedule-E)	Applicable Permits	Done	
5		A permission of State Govt. for boulders extraction	Done	
6		Permission of Village Panchayet and Pollution Board for installation of crushers	Done	
7		License for use of explosives	Done	
8		Permission of the State Govt. from drawing water from river/ reservoir	Done	
9			Labour Licence	Done
10	Clause 12.1	Quality Assurance Plan	Submitted	MKCIL/ASSAM/PKG-07/139 dt. 07.04.2025
11		Construction Methodology	Submitted	MKCIL/ASSAM/PKG-07/150 dt. 14.04.2025

4-L of NH 37 from design Ch 0+020 on NH-8 near Karimganj to design Chainage 14+380 near Sutarkandi (Spur Connectivity to Indo/Bangladesh Border) Silchar-Churaibari Pkg-7 in the State of Assam on HAM mode.

5.2 Shifting of Utilities

The project works includes shifting/relocation of various utility services along the project road. The details of the utilities/ Hindrances are required to be shifted/ relocated/ removed along the Project Highway is summarized below:

Sl. No.	Utility/ Hindrance Type	Unit	Nos.	Remarks
1.	HT/LT Lines (including Transformer if any)	Kms	4.36	In progress
2.	HT/ LT crossing	Nos.	8	50% Done
3.	Water Pipelines	Kms	4.65	Done
4.	Water Pipeline Crossing	Nos.	14.00	Done

5.3 Tree Cutting

The tree cutting status is given below for the project highway.

Sr. No.	Description	Total	Remarks
1.	Total Number of Trees	407.00	
2.	Total Felling of Trees	256.00	
3.	Balance Trees	151.00	

5.4 Land Acquisition

As appended above in executive summary, Serial no. 13.

4-L of NH 37 from design Ch 0+020 on NH-8 near Karimganj to design Chainage 14+380 near Sutarkandi (Spur Connectivity to Indo/Bangladesh Border) Silchar-Churaibari Pkg-7 in the State of Assam on HAM mode.

**CHAPTER -6
MOBILIZATION**

6.1 Manpower Mobilization of Concessionaire

Sr. No.	Name of Employee	Designation	Department
1	Satish Chandra Pandeya	AVP	HQ
2	Vinay Kumar Pandey	GM (Projects)	Project
3	Gaijianpov Gonmei	Asst. Manager	Accounts
4	Rituraj Gop	Sr. Engineer	Billing/ Planning
5	Shubham Kumar	Engineer	Billing/ Planning
6	Surajit Samanta	Engineer	Billing/ Planning
7	Tupidhar Das	Executive	HR/Admin
8	Sanjeev Kumar Pandey	Executive	HR/Admin
9	Golu Meena	Supervisor	HR/Admin
10	Vageesh Tripathi	Senior Engineer	Structure
11	Jaydeep Bhattacharya	Sr. Engineer	Structure
12	Brijesh Kumar	Engineer	Structure
13	Souvik Paul	Engineer	Structure
14	Sandeep Kumar	Supervisor	Structure
15	Ankit Chaurasiya	Supervisor	Structure
16	Ratan Thakur	Supervisor	Structure
17	Alok Kumar Choudhary	Deputy Manager	Highway
18	Vishal Mishra	Asst. Manager	Highway
19	Janmejay Kar	Asst. Manager	Highway
20	Tapas Basak	Engineer	Highway
21	Dinesh Kumar	Engineer	Highway
22	Krishna Singh	Supervisor	Highway
23	Md Mohbub Ahmed	Supervisor	Highway
24	Joga Ram	Supervisor	Highway
25	Amardeep Chaudhary	Supervisor	Highway
26	Pawan Kumar	Jr. Engineer	Highway
27	Ashis Koley	Deputy Manager	Survey
28	Koushik Routh	Sr. Surveyor	Survey
29	Koushik Samanta	Surveyor	Survey
30	Amit Singh	Surveyor	Survey
31	Chandan Kumar Dash	Sr. Manager	Store
32	Sujeet Kumar	Supervisor	Store
33	Sumanta Datta	Supervisor	Store

4-L of NH 37 from design Ch 0+020 on NH-8 near Karimganj to design Chainage 14+380 near Sutarkandi (Spur Connectivity to Indo/Bangladesh Border) Silchar-Churaibari Pkg-7 in the State of Assam on HAM mode.

34	Milan Samantha	Supervisor	Store
35	Neeraj Kumar	Sr. Executive	Store
36	Amit Kumar	Jr. Engineer	Store
37	Amit Sikarwar	Executive	Store
38	Pradip Kumar Saha	Sr. Executive	Store
39	Abhishek Dwivedi	Jr. Engineer	Store
40	Mohit	Supervisor	Store
41	Jainendra Pratap Singh	Executive	Store
42	Shyambabu Singh	Manager	Liaison
43	Sahil	Sr. Executive	Liaison
44	Subrata Dinda	Senior Manager	P&M
45	Amit Bhadauriya	Executive	P&M
46	Indrajit Majumdar	Supervisor	P&M
47	Mrityunjay	Engineer	P&M
48	Raman Kumar	Sr. Executive	P&M
49	Priyesh Kumar Sharma	Supervisor	P&M
50	Sandeep Kumar Gejwal	Sr. Manager	P&M
51	Alok Kumar Ghadai	Engineer	P&M
52	Lakshman Shil	Fleet Supervisor	P&M
53	Sachin	Engineer	P&M
54	Prabhakar Kumar	Jr. Engineer	P&M
55	Joy Kanoo	Supervisor	P&M
56	Ranjit Kumar Prajapati	Executive	P&M
57	Sujay De Sarkar	Engineer	QA/QC
58	Ravi Shanker Tripathi	Sr. Manager	QA/QC
59	Amit Pathak	Technician	QA/QC
60	Ankit Kumar	Sr. Engineer	QA/QC
61	Manish Kumar Mandal	Lab tech	QA/QC
62	Vivek Kumar Singh	Sr. Lab Tech.	QA/QC
63	Debabrata Nath	Engineer	QA/QC
64	Abhishek Raj	Lab Asst.	QA/QC
65	Pawan Kumar	Safety Asst.	Safety

4-L of NH 37 from design Ch 0+020 on NH-8 near Karimganj to design Chainage 14+380 near Sutarkandi (Spur Connectivity to Indo/Bangladesh Border) Silchar-Churaibari Pkg-7 in the State of Assam on HAM mode.

CHAPTER-7

DEPLOYMENT OF PLANTS AND EQUIPMENT / PROJECT SET UP PLAN

7.1 Plants and Equipment Deployed

S.no	Equipment type	Unit	Qty	Remarks
1	LMV	Nos.	17	
2	TIPPER	Nos.	35	
3	MOBILE CRANE	Nos.	4	
4	SOIL COMPACTOR	Nos.	12	
5	EXCAVATOR	Nos.	09	
6	BACK HOE LOADER	Nos.	05	
7	DIESEL DISPENCER	Nos.	2	
8	TRANSIT MIXER	Nos.	09	
9	TRACTOR	Nos.	2	
10	GRADER	Nos.	3	
11	BABY ROLLER	Nos.	1	
12	HM PLANT	Nos.	1	
13	BATCHING PLANT	Nos.	1	
14	RE BLOCK PLANT	Nos.	1	
15	DG	Nos.	9	
16	TRAILER	Nos.	2	
17	CRUSHER	Nos.	2	
18	WATER TANKER	Nos.	05	
19	LOADER	Nos.	2	
20	BOOM PLACER	Nos	01	

4-L of NH 37 from design Ch 0+020 on NH-8 near Karimganj to design Chainage 14+380 near Sutarkandi (Spur Connectivity to Indo/Bangladesh Border) Silchar-Churaibari Pkg-7 in the State of Assam on HAM mode.

CHAPTER-8

DESIGN AND DRAWING

The project highway has been designed for four lane divided carriageway facility with provision of central raised median of 1.6m. The Concession Agreement envisages design of the project highway by the Concessionaire. The scope of design includes the design for road works, structure works and other project facilities. The drawings need to be prepared and approved for execution of each component of the project highway.

8.1 Design

The design of road works e.g., plans and profiles, cross sections and other miscellaneous items are being prepared by the Concessionaire for approval and execution of works accordingly. Similarly, the design of various structures e.g., Major bridge, Minor bridges, Vehicular Underpasses, Box Culverts, Hume Pipe Culverts etc. are also being prepared by the Concessionaire for review by Authority/ IE.

8.2 Drawings

As per requirement of the Contract Agreement various drawings are being prepared for execution and completion of the works. The working drawings of road works and structure works are being prepared by the Concessionaire and submitted to the Authority/ Independent Engineer prior to execution of works at site.

8.3 Status of Approval of Drawings

The status of drawing submission and approval of GAD for road and structure works as on May-31, 2026, is enclosed in this chapter of the report.

Road Works

Description	Total Nos	Submitted	Approved
Plan and Profile	1	1	1
Pavement Design Report (Flexible)	1	1	1
Pavement Design Report (Rigid)	1	1	1
RE Block Drawing	1	1	1
Boundary Wall Drawing	1	1	1
Typical Drain	1	1	0
Friction Slab CB Drawing	1	1	0
Typical Toe Wall	1	1	1
Typical Retaining Wall Flat	1	1	1
Typical Retaining Wall Emk.	1	1	0
RE Wall	4	2	0

4-L of NH 37 from design Ch 0+020 on NH-8 near Karimganj to design Chainage 14+380 near Sutarkandi (Spur Connectivity to Indo/Bangladesh Border) Silchar-Churaibari Pkg-7 in the State of Assam on HAM mode.

Structure Works:-

Structure				
Description	Total Nos	Submitted	Approved	Remarks
Box Underpass	4	4	4	
SVUP	1	1	1	
LVUP	9	9	9	
VUP	2	2	2	
MNB	8	8	7	
MJB	3	3	2	
ROB	1	1	1	Approved from Railway.
Box Culvert	32	30	30	20 Addi. Culvert 1x4x3 & 20 Addi. Pipe Culvert 1x1.2m

**4-L of NH 37 from design Ch 0+020 on NH-8 near Karimganj to design Chainage 14+380 near Sutarkandi (Spur Connectivity to Indo/Bangladesh Border)
Silchar-Churaibari Pkg-7 in the State of Assam on HAM mode.**

CHAPTER-9

PROJECT WORK PROGRESS

Project Name :-	Four Laning of Karimganj - Sutarkandi section of NH-37 from Design chainage 0.020 (Assam-Agartala Road NH-8 near Kanisail Pt II) to Km. 14.380 (Sutarkandi, India-Bangladesh Border) in the state of Assam (Package-7)										
Authority Engineer :-	National Highways & Infrastructure Development Corporation Limited										
Independent Engineer :-	M/s Technocrats Advisory Services Pvt. Ltd. in association with M/s MAV Associates LLP										
Concessionaire :-	MKC Badarpur Churaibari Kamakhya (PKG-7) Highways Pvt. Ltd.										
Total Contract Price :-	3,80,26,00,000										
Schedule-G											
Item	Stage for measurement of Physical Progress	Unit	Qty.	Weightage in percentage to the contract price	Unit Rate	Amount as per Contract Price	Physical Progress	% of Physical Progress		Value of Physical Progress	
Road works including culverts, minor bridges, underpasses, overpasses, approaches to ROB/RUB/ Major Bridges/ Structures (but excluding service roads)	A - Widening and strengthening of existing road										
	(1) Earthwork upto top of Sub-grade	L-Km	3.27	0.46%	53,39,237.46	1,74,53,022.65	1.09	33.35%	58,19,768.83	0.15%	
	(2) Granular work (Sub-base, base, shoulder)										
	(a) GSB	L-Km	3.27	0.43%	49,67,630.60	1,62,38,305.59	1.00	30.59%	49,67,630.60	0.13%	
	(b) WMM	L-Km	0.34	0.03%	28,57,330.85	9,71,492.49					
	(3) Shoulders	L-Km	0.34	0.01%	12,81,024.02	4,35,548.17					
	(4) Bituminous Work										
	(a) DBM	L-Km	0.34	0.06%	67,68,054.23	23,01,138.44					
	(b) BC	L-Km	0.34	0.02%	18,25,423.72	6,20,644.06					
	(5) Rigid Pavement										
	Concrete Work	L-Km	2.93	1.55%	2,01,00,994.58	5,88,72,256.97	0.50	17.07%	1,00,50,497.29	0.26%	
	B- New 4 Lane Realignment/Bypass										
	(1) Earthwork upto top of Sub-grade	L-Km	23.77	26.87%	4,29,71,160.11	1,02,16,12,534.28	12.29	51.69%	52,81,15,557.79	13.89%	
	(2) Granular work (Sub-base, base, shoulder)										
	(a) GSB	L-Km	23.77	4.07%	65,09,422.18	15,47,57,452.92	6.30	26.50%	4,10,09,359.72	1.08%	
	(b) WMM	L-Km	23.77	2.76%	44,21,022.65	10,51,07,056.61	1.20	5.05%	53,05,227.19	0.14%	
	(3) Shoulder	L-Km	23.77	0.67%	10,75,603.46	2,55,71,801.44					
	(4) Bituminous Work										
	(a) DBM	L-Km	23.77	1.78%	28,42,675.90	6,75,82,846.67					
	(b) BC	L-Km	23.77	1.15%	18,44,436.54	4,38,50,328.60					
C- New Culverts, Minor Bridges, underpasses, overpasses on existing road, realignment, bypasses:											
1) Culverts	No.	64.00	4.55%	27,01,924.83	17,29,23,189.37	35.00	54.69%	9,45,67,369.19	2.49%		
2) Minor Bridge											
a) Foundation	No.	22.00	2.76%	47,67,472.88	10,48,84,403.25	17.00	77.27%	8,10,47,038.88	2.13%		
b) Sub-Structure	No.	22.00	1.27%	21,91,048.96	4,82,03,077.10	8.00	36.36%	1,75,28,391.67	0.46%		

**4-L of NH 37 from design Ch 0+020 on NH-8 near Karimganj to design Chainage 14+380 near Sutarkandi (Spur Connectivity to Indo/Bangladesh Border)
Silchar-Churaibari Pkg-7 in the State of Assam on HAM mode.**

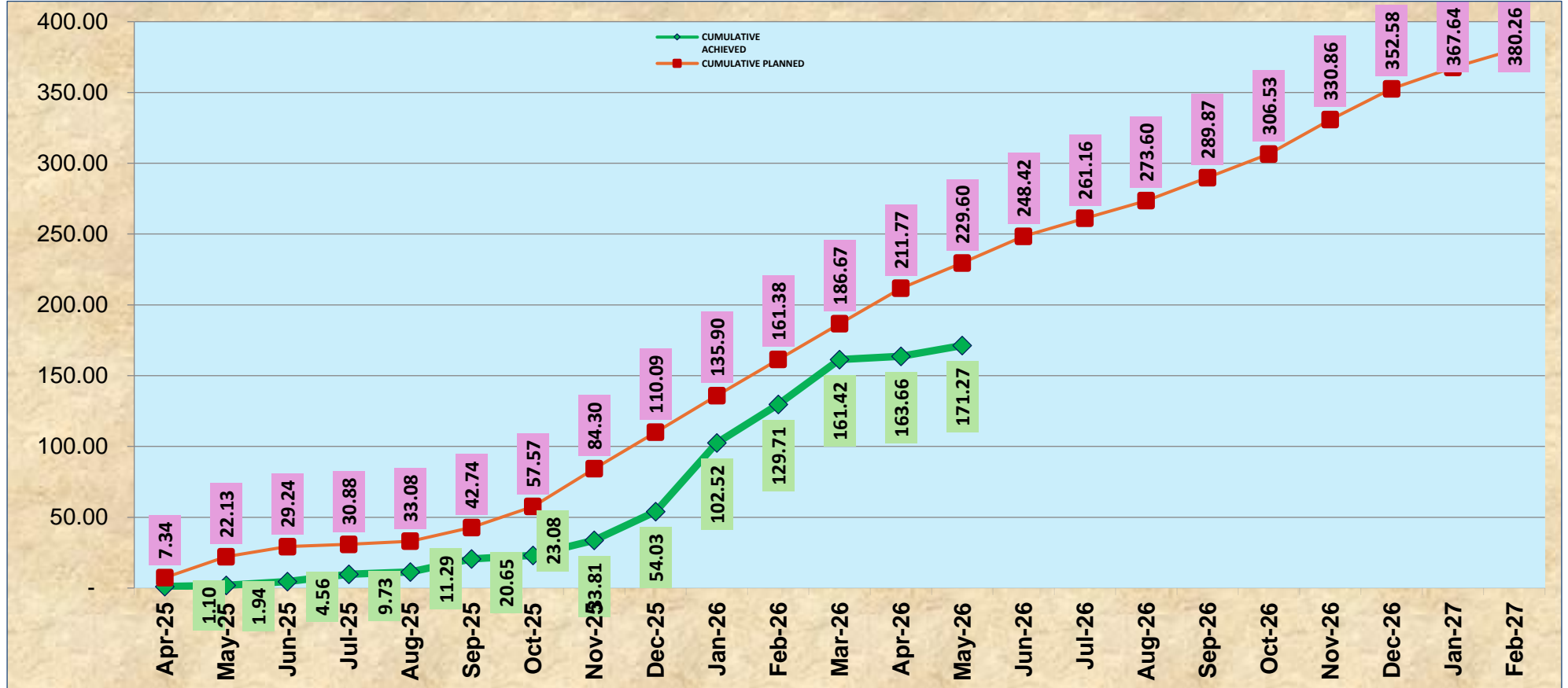
	c) Super-Structure (including Crash Barrier etc. Complete) If pre-cast girders/ segments are used, 40% of the weightage of the stage in percentage to the bid project cost is assigned to the casting of such precast girders/ segments.									
	c-i) Precast Girder - On Casting (40%)	No.	6.00	0.72%	45,37,251.14	2,72,23,506.86	2.00	33.33%	9074502.287	0.24%
	c-ii) Slab - after Completion of Slab (60%)	No.	16.00	1.07%	25,52,203.77	4,08,35,260.29	4.00	25.00%	1,02,08,815.07	0.27%
	5) Grade Separated Structures									
	a) Underpasses (Box Underpass, SVUP, LVUP, VUP)									
	i) Foundation	No.	38.00	5.31%	53,10,261.12	20,17,89,922.38	24.00	63.16%	12,74,46,266.77	3.35%
	ii) Sub-Structure	No.	38.00	3.61%	36,08,074.95	13,71,06,848.26	22.00	57.89%	7,93,77,648.99	2.09%
	iii) Super-Structure (including Crash Barrier,Wearing coat etc. Complete) If pre-cast girders/ segments are used, 40% of the weightage of the stage in percentage to the bid project cost is assigned to the casting of such precast girders/ segments.									
	- Girder Type - Precast Girder (40%)	No.	6.00	1.41%	89,44,518.88	5,36,67,113.30	2.00	33.33%	1,78,89,037.77	0.47%
	c-ii) Slab - after Completion of Slab (60%)	No.	32.00	2.12%	25,15,645.94	8,05,00,669.96	14.00	43.75%	3,52,19,043.11	0.93%
Major Bridge works and ROB/RUB	C- New Major Bridges									
	(1)Foundation									
	(b) Pile Foundation / Well Foundation	No.	24.00	5.91%	93,63,078.49	22,47,13,883.65	24.00	100.00%	224713883.6	5.91%
	(2) Sub-structure	No.	24.00	1.61%	25,54,082.10	6,12,97,970.32	24.00	100.00%	61297970.32	1.61%
	(3)Super-structure (including crash barriers etc. complete) If pre-cast girders/ segments are used, 40% of the weightage of the stage in percentage to the bid project cost is assigned to the casting of such precast girders/ segments.									
	-Super-structure - Precast Girder (40%)	No.	18.00	1.09%	23,11,648.25	4,16,09,668.50	15.00	83.33%	34674723.75	0.91%
	c-ii) Slab - after Completion of Slab (60%)	No.	18.00	1.64%	34,67,472.37	6,24,14,502.75				
	D- New rail-road bridges									
	(a) ROB									
	(1)Foundation	No.	10.00	2.50%	94,93,846.06	9,49,38,460.62	10.00	100.00%	94938460.62	2.50%
	(2) Sub-structure	No.	10.00	1.06%	40,38,584.27	4,03,85,842.68				
	(3)Super-structure (including crash barriers etc. complete) If pre-cast girders/ segments are used, 40% of the weightage of the stage in percentage to the bid project cost is assigned to the casting of such precast girders/ segments.									
	-Super-structure - Precast Girder (40%)	No.	8.00	0.90%	42,61,719.22	3,40,93,753.72	4.00	50.00%	17046876.86	0.45%
c-ii) Slab - after Completion of Slab (60%)	No.	8.00	1.34%	63,92,578.82	5,11,40,630.58					

**4-L of NH 37 from design Ch 0+020 on NH-8 near Karimganj to design Chainage 14+380 near Sutarkandi (Spur Connectivity to Indo/Bangladesh Border)
Silchar-Churaibari Pkg-7 in the State of Assam on HAM mode.**

Structures (Elevated Section, Reinforced earth)	4) Reinforced Earth Wall (includes Approaches of ROB, Underpasses, Over passes, Flyover etc.)									
	i) Re Block Casting (5%)	Sq.m	24,984.00	0.03%	50.38	12,58,786.95	13,081.45	52.36%	6,59,092.16	0.02%
	ii) Re Block Erection (95%)	Sq.m	24,984.00	0.63%	957.29	2,39,16,952.03				
Electrical and Public Health Utilities	UTILITY SHIFTING									
	HT/LT lines (including Transformers if any)	Km	4.36	0.04%	3,35,796.22	14,64,071.51	2.38	54.59%	799194.9976	0.02%
	HT/LT crossings	No.	65.00	1.03%	6,03,811.97	3,92,47,778.01	20.00	30.77%	12076239.39	0.32%
	Water pipeline	Km	4.65	0.03%	2,24,161.61	10,42,351.47	4.65	100.00%	10,42,351.47	0.03%
	Water pipeline crossings	No.	14.00	0.06%	1,64,074.07	22,97,036.95	14.00	100.00%	22,97,036.95	0.06%
Other Works	OTHER WORKS									
	i) Service Road/ Slip Road	L-Km	4.164	1.78%	1,62,45,027.01	6,76,44,292.48				
	iii) Road Side Drain	L-Km	2.96	0.44%	55,98,222.31	1,65,70,738.05	0.50	16.89%	27,99,111.16	0.07%
	iv) - Road signs, markings, Km Stone, Safety devices									
	(a) Road signs, markings, Km Stone	L-Km	14.36	0.30%	8,02,715.47	1,15,26,994.17				
	(b) Concrete Crash Barrier/W Beam Crash Barrier in Road work	L-Km	30.96	2.42%	29,68,672.06	9,19,01,180.92				
	v) - Project Facilities									
	(a) Bus bay	No.	2.00	0.08%	15,02,870.20	30,05,740.41				
	viii) Protection Work									
	(a) Boulder Pitching on Slope / Slope Protection Work	L-Km	4.32	2.32%	2,03,94,798.37	8,81,05,528.97				
	(b) Precast Toe Wall / Retaining Wall	L-Km	13.81	10.94%	3,01,16,291.80	41,59,05,989.73	6.40	46.34%	19,27,44,267.51	5.07%
	x) Miscellaneous									
	(a) Street Lightning	No.	188.00	0.09%	18,607.04	34,98,122.76				
	(b) Junction/Interchange	No.	6.00	0.18%	11,42,768.68	68,56,612.05				
	(c) Precast Boundary Wall	L-Km	27.04	0.42%	5,90,254.68	1,59,62,375.17				
	(d) ATMS, HTMS, Traffic Aid Posts, Medical aid Posts, Vehicle Recue Posts, Telecom System	L-Km	28.72	0.34%	4,51,912.80	1,29,78,935.49				
	(e) Rain Water Harvesting	No.	28.00	0.17%	2,25,477.87	63,13,380.38				
Grand Total >>>				100.00%		3,80,26,00,000.00				45.04%

4-L of NH 37 from design Ch 0+020 on NH-8 near Karimganj to design Chainage 14+380 near Sutarkandi (Spur Connectivity to Indo/Bangladesh Border)
 Silchar-Churaibari Pkg-7 in the State of Assam on HAM mode.

9.2 S Curve

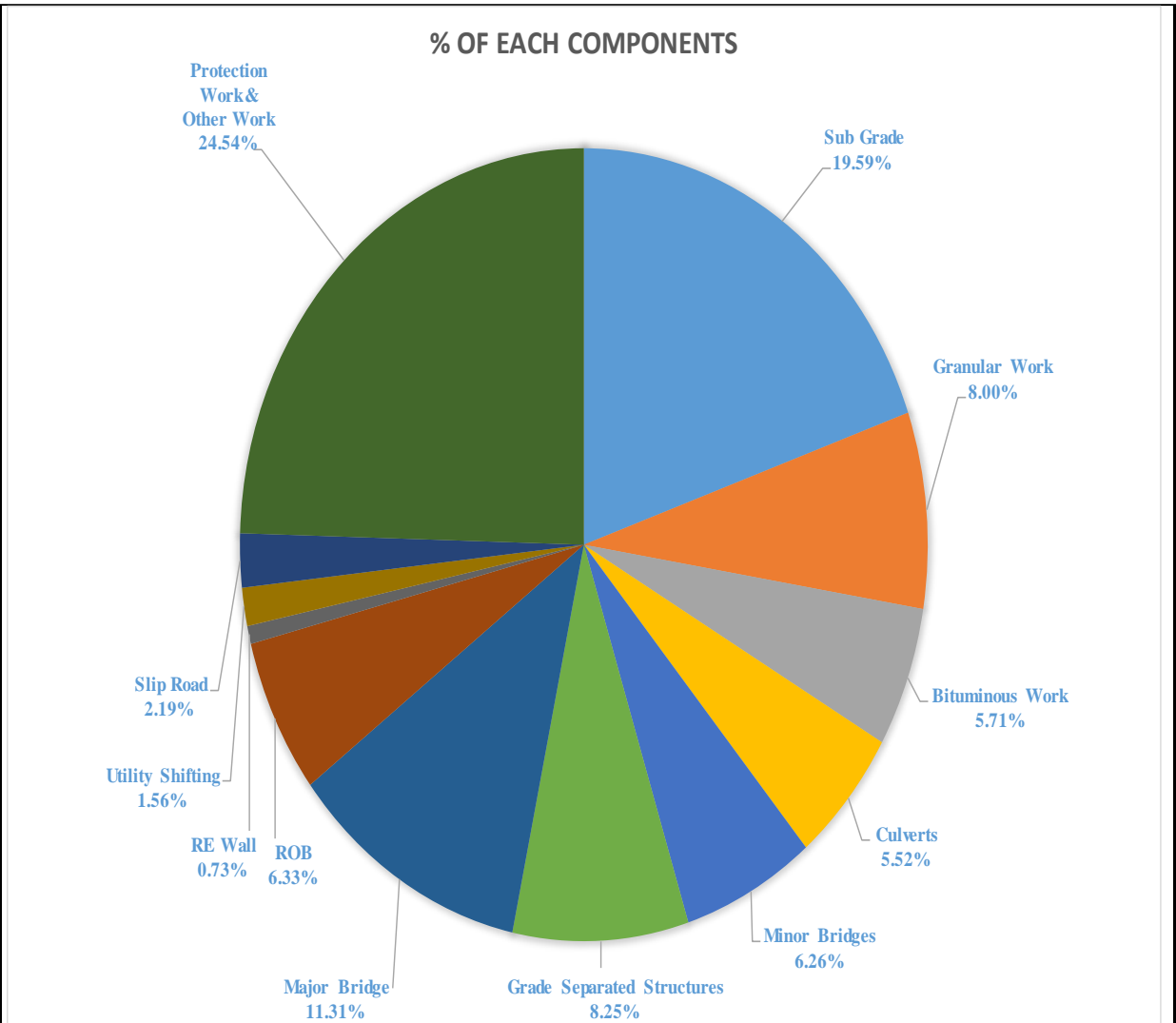


VALUES (IN CR.)	MONTH	1	2	3	4	5	6	7	8	9	10	11	12	13	14	15	16	17	18	19	20	21	22	23
	MONTH	Apr-25	May-25	Jun-25	Jul-25	Aug-25	Sep-25	Oct-25	Nov-25	Dec-25	Jan-26	Feb-26	Mar-26	Apr-26	May-26	Jun-26	Jul-26	Aug-26	Sep-26	Oct-26	Nov-26	Dec-26	Jan-27	Feb-27
CUMULATIVE PLANNED		7.34	22.13	29.24	30.88	33.08	42.74	57.57	84.30	110.09	135.90	161.38	186.67	211.77	229.60	248.42	261.16	273.60	289.87	306.53	330.86	352.58	367.64	380.26
CUMULATIVE ACHIEVED		1.10	1.94	4.56	9.73	11.29	20.65	23.08	33.81	54.03	102.52	129.71	161.42	163.36	171.27									
		0.29%	0.51%	1.20%	2.56%	2.97%	5.43%	6.07%	8.89%	14.21%	26.96%	34.11%	42.45%	43.04%	45.04%									

4-L of NH 37 from design Ch 0+020 on NH-8 near Karimganj to design Chainage 14+380 near Sutarkandi (Spur Connectivity to Indo/Bangladesh Border)
 Silchar-Churaibari Pkg-7 in the State of Assam on HAM mode.

9.3 Weightages (Earthwork, Granular Work, Bituminous Work, Culvert, MJB, MNB, Underpass, ROB, RE Wall, Utility Shifting, SR and Others)

Work Description	% of Each sub components	Amount (Cr.)
Sub Grade	19.59%	74,50,23,653.02
Granular Work	8.00%	30,43,19,594.30
Bituminous Work	5.71%	21,70,88,192.72
Culverts	5.52%	20,99,29,557.88
Minor Bridges	6.26%	23,80,73,489.15
Grade Separated Structures	8.25%	31,37,15,716.05
Major Bridge	11.31%	43,00,02,339.39
ROB	6.33%	24,07,16,649.18
RE Wall	0.73%	2,78,77,340.41
Utility Shifting	1.56%	5,92,90,359.01
Slip Road	2.19%	8,34,60,380.79
Protection Work& Other Work	24.54%	93,31,02,728.10
Total	100.00%	3,80,26,00,000.00



**4-L of NH 37 from design Ch 0+020 on NH-8 near Karimganj to design Chainage 14+380 near Sutarkandi (Spur Connectivity to Indo/Bangladesh Border)
Silchar-Churaibari Pkg-7 in the State of Assam on HAM mode.**

		LHS		RHS	
	Chainage	BC	DBM	Sub-Grade	Embankment
LHS	12+030				
	12+040				
	12+050				
	12+060				
	12+070				
	12+080				
	12+090				
	12+100				
	12+110				
	12+120				
	12+130				
	12+140				
	12+150				
	12+160				
	12+170				
	12+180				
	12+190				
	12+200				
	12+210				
	12+220				
12+230					
12+240					
12+250					
12+260					
12+270					
12+280					
12+290					
12+300					
12+310					
12+320					
12+330					
12+340					
12+350					
12+360					
12+370					
12+380					
12+390					
12+400					
12+410					
12+420					
12+430					
12+440					
12+450					
12+460					
12+470					
12+480					
12+490					
12+500					
12+510					
12+520					
12+530					
12+540					
12+550					
12+560					
12+570					
12+580					
12+590					
12+600					
12+610					
12+620					
12+630					
12+640					
12+650					
12+660					
12+670					
12+680					
12+690					
12+700					
12+710					
12+720					
12+730					
12+740					
12+750					
12+760					
12+770					
12+780					
12+790					
12+800					
12+810					
12+820					
12+830					
12+840					
12+850					
12+860					
12+870					
12+880					
12+890					
12+900					
12+910					
12+920					
12+930					
12+940					
12+950					
12+960					
12+970					
12+980					
12+990					
13+000					
13+010					
13+020					
13+030					
13+040					
13+050					
13+060					
13+070					
13+080					
13+090					
13+100					
13+110					
13+120					
13+130					
13+140					
13+150					
13+160					
13+170					
13+180					
13+190					
13+200					
13+210					
13+220					
13+230					
13+240					
13+250					
13+260					
13+270					
13+280					
13+290					
13+300					
13+310					
13+320					
13+330					
13+340					
13+350					
13+360					
13+370					
13+380					
13+390					
13+400					
13+410					
13+420					
13+430					
13+440					
13+450					
13+460					
13+470					
13+480					
13+490					
13+500					
13+510					
13+520					
13+530					
13+540					
13+550					
13+560					
13+570					
13+580					
13+590					
13+600					
13+610					
13+620					
13+630					
13+640					
13+650					
13+660					
13+670					
13+680					
13+690					
13+700					
13+710					
13+720					
13+730					
13+740					
13+750					
13+760					
13+770					
13+780					
13+790					
13+800					
13+810					
13+820					
13+830					
13+840					
13+850					
13+860					
13+870					
13+880					
13+890					
13+900					
13+910					
13+920					
13+930					
13+940					
13+950					
13+960					
13+970					
13+980					
13+990					
14+000					
14+010					
14+020					
14+030					
14+040					
14+050					
14+060					
14+070					
14+080					
14+090					
14+100					
14+110					
14+120					
14+130					
14+140					
14+150					
14+160					
14+170					
14+180					
14+190					
14+200					
14+210					
14+220					
14+230					
14+240					
14+250					
14+260					
14+270					
14+280					
14+290					
14+300					
14+310					
14+320					
14+330					
14+340					
14+350					
14+360					
14+370					
14+380					
14+390					
14+400					
14+410					
14+420					
14+430					
14+440					
14+450					
14+460					
14+470					
14+480					
14+490					
14+500					
14+510					
14+520					
14+530					
14+540					
14+550					
14+560					
14+570					
14+580					
14+590					
14+600					
14+610					
14+620					
14+630					
14+640					
14+650					
14+660					
14+670					
14+680					
14+690					
14+700					
14+710					
14+720					
14+730					
14+740					
14+750					
14+760					
14+770					
14+780					
14+790					
14+800					
14+810					
14+820					
14+830					
14+840					
14+850					
14+860					
14+870					
14+880					
14+890					
14+900					
14+910					
14+920					
14+930					
14+940					
14+950					
14+960					
14+970					
14+980					
14+990					
15+000					
15+010					
15+020					
15+030					
15+040					
15+050					
15+060					
15+070					
15+080					
15+090					
15+100					
15+110					
15+120					
15+130					

4-L of NH 37 from design Ch 0+020 on NH-8 near Karimganj to design Chainage 14+380 near Sutarkandi (Spur Connectivity to Indo/Bangladesh Border) Silchar-Churaibari Pkg-7 in the State of Assam on HAM mode.

9.5.2 Status of SVUP Culvert:

SN	LHS										SVUP Chainage	RHS														
	Protection Work	Parapet Wall	Top Slab	Top Haunch	Wall Final Lift	Wall 2nd Lift	Wall 1st Lift	Haunch	Raft	PCC/Granular Bed		Layout & Excavation	Abutment	Abutment	Layout & Excavation	PCC/Granular Bed	Raft	Haunch	Wall 1st Lift	Wall 2nd Lift	Wall Final Lift	Top Haunch	Top Slab	Parapet Wall	Protection Work	
1											A1	03+728	A1													
											A2		A2													

9.5.3 Status of Minor Bridge: -

Sr.No	LHS										MNB Chainage	RHS														
	Miscellaneous Item	Protection Work	Parapet Wall	Top Slab	Top Haunch	Wall Final Lift	Wall 2nd Lift	Wall 1st Lift	Haunch	Raft		PCC/Granular Bed	Layout & Excavation	Abutment	Abutment	Layout & Excavation	PCC/Granular Bed	Raft	Haunch	Wall 1st Lift	Wall 2nd Lift	Wall Final Lift	Top Haunch	Top Slab	Parapet Wall	Protection Work
1													A1	00+742	A1											
													A2		A2											
2													A1	01+768	A1											
													A2		A2											
3													A1	06+213	A1											
													A2		A2											
4													A1	07+306	A1											
													A2		A2											
5													A1	09+003	A1											
													A2		A2											
6													A1	09+293	A1											
													A2		A2											
7													A1	11+363	A1											
													A2		A2											
8													A1	14+195	A1											
													A2		A2											

9.5.3 Status of Major Bridge: -

SN	LHS											RHS														
	Miscellaneous Item	Crash Barrier	Approach Slab	Desk Slab	RCC Girder	Dirt Wall	Abutment Cap	Abutment Shaft	Abutment Pile Cap	Abutment Pile		Layout & Excavation	Abutment	Abutment	Layout & Excavation	Abutment Pile	Abutment Pile Cap	Abutment Shaft	Abutment Cap	Dirt Wall	RCC Girder	Desk Slab	Approach Slab	Crash Barrier	Miscellaneous Item	
1												A1	00+526	A1												
												P1		P1												
												P2		P2												
												A2		A2												
2												A1	02+880	A1												
												P1		P1												
												P2		P2												
												A2		A2												
3												A1	05+322	A1												
												P1		P1												
												P2		P2												
												A2		A2												

4-L of NH 37 from design Ch 0+020 on NH-8 near Karimganj to design Chainage 14+380 near Sutarkandi (Spur Connectivity to Indo/Bangladesh Border) Silchar-Churaibari Pkg-7 in the State of Assam on HAM mode.

9.5.4 Status of ROB:-

SN	LHS											ROB Chainage	RHS												
	Miscellaneous Item	Crash Barrier	Approach Slab	Desk Slab	RCC Girder	Dirt Wall	Abutment Cap	Abutment Shaft	Abutment Pile Cap	Abutment Pile	Layout & Excavation		Abutment	Abutment	Layout & Excavation	Abutment Pile	Abutment Pile Cap	Abutment Shaft	Abutment Cap	Dirt Wall	RCC Girder	Desk Slab	Approach Slab	Crash Barrier	Miscellaneous Item
1												A1	04+624	A1											
												A2		A2											
2												P1	04+624	P1											
											P2	P2													
												P3		P3											

9.5.5 Status of Underpass:-

SN	LHS											Underpass Chainage	RHS												
	Protection Work	Parapet Wall	Top Slab	Top Haunch	Wall Final Lift	Wall 2nd Lift	Wall 1st Lift	Haunch	Raft	PCC/Granular Bed	Layout & Excavation		Abutment	Abutment	Layout & Excavation	PCC/Granular Bed	Raft	Haunch	Wall 1st Lift	Wall 2nd Lift	Wall Final Lift	Top Haunch	Top Slab	Parapet Wall	Protection Work
1												A1	1+142	A1											
												A2	LVUP	A2											
2												A1	3+886	A1											
												A2	LVUP	A2											
3												A1	4+212	A1											
												A2	LVUP	A2											
4												A1	5+414	A1											
												A2	LVUP	A2											
5												A1	7+213	A1											
												A2	LVUP	A2											
6												A1	9+332	A1											
												A2	LVUP	A2											
7												A1	10+098	A1											
												A2	LVUP	A2											
8												A1	10+834	A1											
												A2	LVUP	A2											
9												A1	12+310	A1											
												A2	LVUP	A2											
10												A1	03+728	A1											
												A2	SVUP	A2											
11												A1	2+999	A1											
												A2	VUP	A2											
12												A1	5+622	A1											
												A2	VUP	A2											

SN	LHS											VUP Chainage	RHS												
	Miscellaneous Item	Crash Barrier	Approach Slab	Desk Slab	RCC Girder	Dirt Wall	Abutment Cap	Abutment Shaft	Abutment Pile Cap	Abutment Pile	Layout & Excavation		Abutment	Abutment	Layout & Excavation	Abutment Pile	Abutment Pile Cap	Abutment Shaft	Abutment Cap	Dirt Wall	RCC Girder	Desk Slab	Approach Slab	Crash Barrier	Miscellaneous Item
1												A1	02+999	A1											
												A2		A2											
2												A1	05+622	A1											
												A2		A2											

CHAPTER-10

QUALITY CONTROL AND MATERIAL

10.1 Quality Control

The execution of works is mainly governed by the specified Technical Specifications for the project. The quality control of the works is required to be monitored on daily basis both at site and in the laboratory. Standard formats have been devised to control the required quality of the works. The Concessionaire Engineers are monitoring the required quality control works and maintaining the records accordingly for each item of works being executed.

10.2 Site Laboratory

The Site Laboratory is established at Base Camp located at CH: -5+600. All the required material tests are being conducted in the laboratory for the project road.

10.3 Materials Testing & Third Party Test

The testing to be carried out in the site laboratory includes tests of soil, aggregates, cement, steel, sand, embankment fill, sub grade, granular subbase and cement concrete. The details of test conducted up to 31st May, 2026 are enclosed.

10.3.1 Soil and Agregates

The test reports for borrow area earth for available borrow area are approved & test reports for Aggregates are also approved for the available Quarry. Test reports for new borrow area earth are submitted to IE for approval.

10.3.2 Cement

The Concessionaire is using approved sources of Cement as Black Tiger (OPC 53 Grade), Dalmia Cement (OPC 53 Grade), Star Cement (OPC 53 Grade), Amrit Cement (OPC 53 Grade) & Max Cement (OPC 53 Grade) for the project work.

10.3.3 Reinforcement Steel

The Concessionaire is using approved sources of TMT from M/s Rashmi Metaliks Limited, M/s Shyam Steel Industries limited, M/s SRMB Srijan Private Limited, M/s Shyam Metalics and Energy Limited.

4-L of NH 37 from design Ch 0+020 on NH-8 near Karimganj to design Chainage 14+380 near Sutarkandi (Spur Connectivity to Indo/Bangladesh Border) Silchar-Churaibari Pkg-7 in the State of Assam on HAM mode.

10.3.4 Status of Materials Source approval

Cement				
Sr. No.	Brand Name	Letter No.	Status	IE Letter No.
1.	Black Tiger Cement	MKCIL/ASSAM/PKG-07/106 dt. 24.03.2025		
2.	Dalmia Cement	MKCIL/ASSAM/PKG-07/107 dt. 24.03.2025	Approved	TASPL-MAV/NH-37/MKCIL/2025/MAY/34
3.	Max Cement	MKCIL/ASSAM/PKG-07/108 dt. 24.03.2025		
4.	Star Cement	MKCIL/ASSAM/PKG-07/109 dt. 24.03.2025		
5.	Amrit Cement	MKCIL/ASSAM/PKG-07/110 dt. 24.03.2025	Approved	TASPL-MAV/NH-37/MKCIL/2026/JAN/141

Reinforcement Steel				
Sr. No.	Brand Name	Letter No.	Status	IE Letter No.
1.	Rashmi Metaliks Limited	MKCIL/ASSAM/PKG-07/483 dt. 25.11.2025	Approved	TASPL-MAV/NH-37/MKCIL/2026/JAN/139
2.	Shyam Steel industries Ltd.	MKCIL/ASSAM/PKG-07/112 dt. 24.03.2025	In-Principle Approved	TASPL-MAV/NH-37/MKCIL/2025/MAY/26
3.	SRMB Srijan Pvt. Ltd.	MKCIL/ASSAM/PKG-07/113 dt. 24.03.2025	In-Principle Approved	TASPL-MAV/NH-37/MKCIL/2025/MAY/32
4.	Shyam Metalics & Energy Ltd.	MKCIL/ASSAM/PKG-07/132 dt. 04.04.2025	Approved	TASPL-MAV/NH-37/MKCIL/2025/MAY/16
5.	Elegant steel	MKCIL/ASSAM/PKG-07/167 dt. 19.04.2025	Approved	TASPL-MAV/NH-37/MKICL/2025/AUG/59
6.	M/s AMIT METALINKS LTD	MKCIL/ASSAM/PKG-07/609 dt. 18.02.2026	Submitted	
7.	M/s OCL Iron & Steel Ltd.	MKCIL/ASSAM/PKG-07/550 dt. 02.01.2026	Approved	TASPL-MAV/NH-37/MKCIL/2026/March/18 1
8.	M/s MAAN Steel	MKCIL/ASSAM/PKG-07/725 dt. 30.05.2026	Submitted	

Admixture				
Sr. No.	Brand Name	Letter No.	Status	IE Letter No.
1.	Berger Paints Pvt. Ltd.	MKCIL/ASSAM/PKG-07/101 dt. 24.03.2025	Approved	TASPL-MAV/NH-37/MKCIL/2026/JAN/146
2.	CHRYSO India Pvt. Ltd	MKCIL/ASSAM/PKG-07/102 dt. 24.03.2025	Approved	TASPL-MAV/NH-37/MKCIL/2026/JAN/147
3.	CICO Technologies Ltd.	MKCIL/ASSAM/PKG-07/103 dt. 24.03.2025	Approved	TASPL-MAV/NH-37/MKICL/2025/SEPT/71
4.	FOSROC Chemicals (India) Ltd.	MKCIL/ASSAM/PKG-07/104 dt. 24.03.2025	Approved	TASPL-MAV/NH-37/MKICL/2025/SEPT/70
5.	Vista Chemtech Pvt. Ltd.	MKCIL/ASSAM/PKG-07/105 dt. 24.03.2025		
6.	Shyam Metalics & Energy Limited	MKCIL/ASSAM/PKG-07/132 Dt. 04.04.2025	Approved	TASPL-MAV/NH-37/MKCIL/2025/MAY/08

4-L of NH 37 from design Ch 0+020 on NH-8 near Karimganj to design Chainage 14+380 near Sutarkandi (Spur Connectivity to Indo/Bangladesh Border) Silchar-Churaibari Pkg-7 in the State of Assam on HAM mode.

7.	STP Pvt Limited	MKCIL/ASSAM/PKG-07/491		
8.	TP	MKCIL/ASSAM/PKG-07/492	Approved	TASPL-MAV/NH-37/MKCIL/2026/JAN/151
9.	HEXATRON Industries Limited	MKCIL/ASSAM/PKG-07/503	Approved	TASPL-MAV/NH-37/MKCIL/2026/JAN/145
10.	CAC Pvt Limited	MKCIL/ASSAM/PKG-07/489	Approved	TASPL-MAV/NH-37/MKCIL/2026/JAN/152
11.	M/s FOSROC Chemicals (India) Ltd.	MKCIL/ASSAM/PKG-07/626 dt. 05.03.2026	Submitted	
12.	M/s OCL Bitumen (VG-40 & VG-30)	MKCIL/ASSAM/PKG-07/649 dt. 26.03.2026	Submitted	

Other				
Sr. No.	Brand Name	Letter No.	Status	IE Letter No.
1.	Titan Technovators.	MKCIL/ASSAM/PKG-07/264 dt. 04.07.2025	Approved	TASPL-MAV/NH-37/MKCIL/2025/MAY/39
2.	Abhuva innovation	MKCIL/ASSAM/PKG-07/265 dt. 04.07.2025	Approved	TASPL-MAV/NH-37/MKCIL/2025/MAY/40
3.	Elegant steel	MKCIL/ASSAM/PKG-07/167 Dt 19.04.2025	Approved	TASPL-MAV/NH-37/MKCIL/2025/MAY/28
4.	Geogrid	MKCIL/ASSAM/PKG-07/577 Dt 19.04.2025	Submitted	
5.	Expansion Joint (M/s JK Prestressing Co.)	MKCIL/ASSAM/PKG-07/578 Dt 19.04.2025	Submitted	
6.	Ms DP Wire,Usha Martin & TATA Steel	MKCIL/ASSAM/PKG-07/620 Dt 18.02.2026	Submitted	
7.	Ms HINCOL, HPCL, BITUMIX INDIA LLP & JALNIDHI BITUMEN	MKCIL/ASSAM/PKG-07/619 Dt 26.02.2026	Submitted	
8.	M/s Techfab India Industries Limited,GeoSys India & Maccaferri	MKCIL/ASSAM/PKG-07/606 Dt 18.02.2026	Submitted	
9.	OM SAI CONSULTANTS KNP PVT LTD	MKCIL/ASSAM/PKG-07/587 Dt 06.02.2026	Submitted	
10.	Shree Balaji Test House Pvt.Ltd	MKCIL/ASSAM/PKG-07/584 Dt 05.02.2026	Submitted	
11.	LRPC Cable HT Strands	MKCIL/ASSAM/PKG-07/620 dt. 26.02.2026	Approved	TASPL-MAV/NH-37/MKCIL/2026/March/175
12.	M/s TATA Steel- HT Strand Wire	MKCIL/ASSAM/PKG-07/620 dt. 26.02.2026	Approved	TASPL-MAV/NH-37/MKCIL/2026/March/178
13.	Grout Mix Design	MKCIL/ASSAM/PKG-07/658 dt. 28.03.2026	Submitted	
14.	M/s Fibretron Composites Pvt Ltd	MKCIL/ASSAM/PKG-07/681 dt. 20.04.2026	Submitted	

4-L of NH 37 from design Ch 0+020 on NH-8 near Karimganj to design Chainage 14+380 near Sutarkandi (Spur Connectivity to Indo/Bangladesh Border) Silchar-Churaibari Pkg-7 in the State of Assam on HAM mode.

10.3.5 Monthly Laboratory Report

Sr.No.	Name of test	Reference as per IS/MoRT&H	Frequency of Tests	Total Tests Conducted upto Previous Month			No. of Tests Conducted during this Month			No. of Tests Conducted upto this Month			No. of Tests Checked by IE			% Checked by IE	Remarks
				Tested	Passed	Failed	Tested	Passed	Failed	Tested	Passed	Failed	Tested	Passed	Failed		
LAB & FIELD TEST'S																	
(I). OGL Samples		IRC :36-2010															
1.1	Free Swelling Index (FSI)	IS : 2720 (P-40)	1 Test / Every 500 m Interval's	33	33	0	0	0	0	33	33	0	0	0	0	0.00	
1.2	Grain size analysis	IS : 2720 (P-4)	1 Test / Every 500 m Interval's	33	33	0	0	0	0	33	33	0	0	0	0	0.00	
1.3	Liquid limits (LL)	IS : 2720 (P-5)	1 Test / Every 500 m Interval's	33	33	0	0	0	0	33	33	0	0	0	0	0.00	
1.4	Plasticity Index (PI)	IS : 2720 (P-5)	1 Test / Every 500 m Interval's	33	33	0	0	0	0	33	33	0	0	0	0	0.00	
1.5	Proctor test (MDD & OMC)	IS : 2720 (P-8)	1 Test / Every 500 m Interval's	33	33	0	0	0	0	33	33	0	0	0	0	0.00	
1.6	California Bearing Ratio Test (CBR)	IS : 2720 (P-16)	As Required	33	33	0	0	0	0	33	33	0	0	0	0	0.00	
1.7	Field Compaction Test (OGL)	IS : 2720 (P-28)	1 Set / 3000 Sqm. (1Set = 10 Pits)	333	320	13	0	0	0	333	320	13	0	0	0	0.00	
(II). Borrow area Samples (EMB/SG)		MoRT&H (Clause-305)															
2.1	Free Swelling Index (FSI)	IS : 2720 (P-40)	2 Test's / 3000 Cum.	300	300	0	0	0	0	300	300	0	0	0	0	#DIV/0!	
2.2	Grain size analysis (GSA)	IS : 2720 (P-4)	2 Test's / 3000 Cum.	300	300	0	0	0	0	300	300	0	0	0	0	#DIV/0!	
2.3	Liquid limits (LL)	IS : 2720 (P-5)	2 Test's / 3000 Cum.	300	300	0	0	0	0	300	300	0	0	0	0	#DIV/0!	
2.4	Plasticity Index (PI)	IS : 2720 (P-5)	2 Test's / 3000 Cum.	300	300	0	0	0	0	300	300	0	0	0	0	#DIV/0!	
2.5	Proctor test (MDD & OMC)	IS : 2720 (P-8)	2 Test's / 3000 Cum.	300	300	0	0	0	0	300	300	0	0	0	0	#DIV/0!	
2.6	California Bearing Ratio Test (CBR)	IS : 2720 (P-16)	1 Test's / 3000 Cum.	150	150	0	0	0	0	150	150	0	0	0	0	#DIV/0!	
2.7	Field Compaction Test (Emb)	IS : 2720 (P-28)	1 Set / 3000 Sqm. (1Set = 10 Pits)	2356	2324	33	0	0	0	2356	2324	33	0	0	0	#DIV/0!	
2.8	Field Compaction Test (Subgrade)	IS : 2720 (P-28)	1 Set / 2000 Sqm. (1Set = 10 Pits)	391	387	4	0	0	0	391	387	4	0	0	0	#DIV/0!	
(III). Course Agg. for Concrete Work's		MoRT&H Table -900-6															
4.1	Gradation of Coarse Aggregate	IS : 2386 (P-1)	1 Test / Every day's work	312	293	19	32	31	1	344	324	20	6	5	1	18.75	
4.2	Flakiness Index (FI)	IS : 2386 (P-1)	1 Test for source / Weekly	52	48	4	5	5	0	57	53	4	1	1	0	20.00	
4.3	Aggregate Impact Value (A.I.V)	IS : 2386 (P-4)	1 Test for source / Weekly	52	48	4	5	5	0	57	53	4	1	1	0	20.00	
4.4	Specific Gravity	IS : 2386 (P-3)	1 Test / Source	6	6	0	0	0	0	6	6	0	0	0	0	0.00	
4.5	Water Absorption	IS : 2386 (P-3)	1 Test / Source	6	6	0	0	0	0	6	6	0	0	0	0	0.00	
4.6	Deleterious Constituents	IS : 2386 (P-2)	1 Test / As Required	0	0	0	0	0	0	0	0	0	0	0	0	0.00	
4.7	Moisture correction	IS : 2386 (P-3)	1 Test / Day	342	342	0	31	31	0	373	373	0	5	5	0	16.13	
4.8	Soundness	IS : 2386 (P-5)	1 Test / Source	0	0	0	0	0	0	0	0	0	0	0	0	0.00	
4.9	Alkali Aggregate Reactivity	IS : 2386 (P-7)	1 Test / Source	0	0	0	0	0	0	0	0	0	0	0	0	0.00	
(IV). Fine Agg. for Concrete		MoRT&H Table -900-6															
5.1	Gradation	IS : 383	1 Test / Every day's work	293	293	0	32	31	1	325	324	1	5	4	1.0	15.63	
5.2	Specific Gravity	IS : 2386 (P-3)	1 Test / Source	6	6	0	0	0	0	6	6	0	0	0	0	0.00	
5.3	Water Absorption	IS : 2720 (P-3)	1 Test / Source	6	6	0	0	0	0	6	6	0	0	0	0	0.00	
5.4	Silt Content	IS : 383	1 Test / Weekly	52	52	0	5	5	0	57	57	0	1	1	0	20.00	
5.5	Moisture correction	IS : 2386 (P-3)	1 Test / Every day's work	342	342	0	31	31	0	373	373	0	4	4	0	12.90	
(V). Concrete Cube's Compressive Strength Test		IS : 516															
Grade of Concrete : M-10 PCC																	
6.1	for 7 days	IS : 516	As per Frequency MoRT&H Table 1700-09	181	181	0	6	6	0	187	187	0	1	1	0	16.67	
6.2	for 28 days	IS : 516	As per Frequency MoRT&H Table 1700-09	371	371	0	8	8	0	379	379	0	2	2	0	25.00	
Grade of Concrete : M-15 PCC																	
6.3	for 7 days	IS : 516	As per Frequency MoRT&H Table 1700-09	64	64	0	0	0	0	64	64	0	0	0	0	#DIV/0!	
6.4	for 28 days	IS : 516	As per Frequency MoRT&H Table 1700-09	96	96	0	0	0	0	96	96	0	0	0	0	#DIV/0!	
Grade of Concrete : M-20 PCC																	
6.5	for 7 days	IS : 516	As per Frequency MoRT&H Table 1700-09	0	0	0	0	0	0	0	0	0	0	0	0	0.00	
6.6	for 28 days	IS : 516	As per Frequency MoRT&H Table 1700-09	0	0	0	0	0	0	0	0	0	0	0	0	0.00	
Grade of Concrete : M-20 RCC																	
6.7	for 7 days	IS : 516	As per Frequency MoRT&H Table 1700-09	17	17	0	0	0	0	17	17	0	0	0	0	#DIV/0!	
6.8	for 28 days	IS : 516	As per Frequency MoRT&H Table 1700-09	3	3	0	0	0	0	3	3	0	0	0	0	#DIV/0!	

4-L of NH 37 from design Ch 0+020 on NH-8 near Karimganj to design Chainage 14+380 near Sutarkandi (Spur Connectivity to Indo/Bangladesh Border) Silchar-Churaibari Pkg-7 in the State of Assam on HAM mode.

Grade of Concrete : M-20 for KERB																
6.9	for 7 days	IS :516	As per Frequency MoRT&H Table 1700-09	0	0	0	0	0	0	0	0	0	0	0	0	0.00
6.1	for 28 days	IS :516	As per Frequency MoRT&H Table 1700-09	0	0	0	0	0	0	0	0	0	0	0	0.00	
Grade of Concrete : M-25 RCC																
6.11	for 7 days	IS :516	As per Frequency MoRT&H Table 1700-09	521	521	0	33	33	0	554	554	0	3	3	0	9.09
6.12	for 28 days	IS :516	As per Frequency MoRT&H Table 1700-09	1007	1007	0	33	33	0	1040	1040	0	5	5	0	15.15
Grade of Concrete : M-30 RCC																
6.13	for 7 days	IS :516	As per Frequency MoRT&H Table 1700-09	199	199	0	3	3	0	202	202	0	1	1	0	33.33
6.14	for 28 days	IS :516	As per Frequency MoRT&H Table 1700-09	382	382	0	28	28	0	410	410	0	3	3	0	10.71
Grade of Concrete : M-35 RCC																
6.15	for 7 days	IS :516	As per Frequency MoRT&H Table 1700-09	106	106	0	6	6	0	112	112	0	2	2	0	33.33
6.16	for 28 days	IS :516	As per Frequency MoRT&H Table 1700-09	372	372	0	12	12	0	384	384	0	3	3	0	25.00
Grade of Concrete : M-35 Pile																
6.17	for 7 days	IS :516	As per Frequency MoRT&H Table 1700-09	62	62	0	0	0	0	62	62	0	0	0	0	#DIV/0!
6.18	for 28 days	IS :516	As per Frequency MoRT&H Table 1700-09	140	140	0	0	0	0	140	140	0	0	0	0	#DIV/0!
Grade of Concrete : M-35 RE BLOCK																
6.19	for 7 days	IS :516	As per Frequency MoRT&H Table 1700-09	83	83	0	6	6	0	89	89	0	1	1	0	16.67
6.2	for 28 days	IS :516	As per Frequency MoRT&H Table 1700-09	225	225	0	0	0	0	225	225	0	0	0	0	#DIV/0!
Grade of Concrete : M-40 RCC																
6.21	for 7 days	IS :516	As per Frequency MoRT&H Table 1700-09	57	57	0	19	19	0	76	76	0	4	4	0	21.05
6.22	for 28 days	IS :516	As per Frequency MoRT&H Table 1700-09	156	156	0	45	45	0	201	201	0	6	6	0	13.33
Grade of Concrete : M-40 PILE																
6.21	for 7 days	IS :516	As per Frequency MoRT&H Table 1700-09	130	130	0	0	0	0	130	130	0	0	0	0	#DIV/0!
6.22	for 28 days	IS :516	As per Frequency MoRT&H Table 1700-09	451	451	0	0	0	0	451	451	0	0	0	0	#DIV/0!
Grade of Concrete : M-55 GIRDER/PSC																
6.25	for 7 days	IS :516	As per Frequency MoRT&H	25	25	0	3	3	0	28	28	0	2	2	0	66.67
6.26	for 28 days	IS :516	As per Frequency MoRT&H	81	81	0	17	17	0	98	98	0	10	10	0	58.82
(VI). Cement tests																
7.1	Fineness of Cement	IS :4031 (P-1)	1 Test Every Batch of Cement	35	35	0	2	2	0	37	37	0	1	1	0	50.00
7.2	Normal Consistency	IS :4031 (P-4)	1 Test Every Batch of Cement	35	35	0	2	2	0	37	37	0	1	1	0	50.00
7.3	Initial Setting Time	IS :4031 (P-5)	1 Test Every Batch of Cement	35	35	0	2	2	0	37	37	0	1	1	0	50.00
7.4	Final Setting time	IS :4031 (P-5)	1 Test Every Batch of Cement	35	35	0	2	2	0	37	37	0	1	1	0	50.00
7.5	Compressive Strength (03 Days)	IS :516	1 Test Every Batch of Cement	46	46	0	3	3	0	49	49	0	1	1	0	33.33
7.6	Compressive Strength (07 Days)	IS :516	1 Test Every Batch of Cement	49	49	0	2	2	0	51	51	0	1	1	0	50.00
7.7	Compressive Strength (28 Days)	IS :516	1 Test Every Batch of Cement	45	45	0	2	2	0	47	47	0	1	1	0	50.00
7.8	Soundness	IS :4031 (P-3)	1 Test Every Batch of Cement	2	2	0	0	0	0	2	2	0	0	0	0	0.0
7.9	Specific Gravity	IS :4031 (P-11)	1 Test Every Batch of Cement	1	1	0	0	0	0	1	1	0	0	0	0	0.0

4-L of NH 37 from design Ch 0+020 on NH-8 near Karimganj to design Chainage 14+380 near Sutarkandi (Spur Connectivity to Indo/Bangladesh Border) Silchar-Churaibari Pkg-7 in the State of Assam on HAM mode.

(VII). Granular Sub-Base (GSB)		MoRT&H Clause - 401															
8.1	Gradation	Table 400-2	1 Test /400 Cum.	37	37	0	0	0	0	0	37	37	0	0	0	0	#DIV/0!
8.2	Liquid limits (LL)	IS: 2720 (P-5)	1 Test /400 Cum.	37	37	0	0	0	0	0	37	37	0	0	0	0	#DIV/0!
8.3	Plasticity Index (PI)	IS: 2720 (P-5)	1 Test /400 Cum.	2	2	0	0	0	0	0	2	2	0	0	0	0	#DIV/0!
8.4	Moisture Prior to Compaction Test	IS: 2720 (P-2)	1 Test /400 Cum.	1	1	0	0	0	0	0	1	1	0	0	0	0	#DIV/0!
8.5	Proctor test (MDD & OMC)	IS: 2720 (P-8)	1 Test Per Source / As Required	1	1	0	0	0	0	0	1	1	0	0	0	0	#DIV/0!
8.6	California Bearing Ratio Test (CBR)	IS: 2720 (P-16)	1 Test Per Source / As Required	1	1	0	0	0	0	0	1	1	0	0	0	0	#DIV/0!
8.7	Water Absorption	IS: 2720 (P-3)	1 Test Per Source / As Required	1	1	0	0	0	0	0	1	1	0	0	0	0	#DIV/0!
8.8	Aggregate Impact Value (AIV)	IS: 2386 (P-4)	As Required	1	1	0	0	0	0	0	1	1	0	0	0	0	#DIV/0!
8.9	Field Compaction Test (CSB)	IS: 2720 (P-28)	1 Set / 1000 Sqm. (1Set = 3 Pts)	68	68	0	0	0	0	0	68	68	0	0	0	0	#DIV/0!
(VIII). Cement Treated Sub Base (CTSBS)		MoRT&H Clause - 403 & IRC-37: 2018															
9.1	Gradation	MoRT&H Table 400-4	1 Test 400 Cum.	0	0	0	0	0	0	0	0	0	0	0	0	0	0.00
9.2	Liquid limits (LL)	IS: 2720 (P-5)	1 Test 400 Cum.	0	0	0	0	0	0	0	0	0	0	0	0	0	0.00
9.3	Plasticity Index (PI)	IS: 2720 (P-5)	1 Test 400 Cum.	0	0	0	0	0	0	0	0	0	0	0	0	0	0.00
9.4	Proctor test (MDD & OMC)	IS: 2720 (P-8)	As Required	0	0	0	0	0	0	0	0	0	0	0	0	0	0.00
9.5	Unconfined Compressive Strength (UCS)	IS: 516	3 Specimens each 400 ton/ Minimum 2 tests per day	0	0	0	0	0	0	0	0	0	0	0	0	0	0.00
9.6	Cement Content	IS: 516	3 Specimens each 400 ton/ Minimum 2 tests per day	0	0	0	0	0	0	0	0	0	0	0	0	0	0.00
9.7	Flexural Strength	IS: 516	3 Specimens each 400 ton/ Minimum 2 tests per day	0	0	0	0	0	0	0	0	0	0	0	0	0	0.00
9.8	Soundness Test	BIS: 4332 (P-4)	As Required	0	0	0	0	0	0	0	0	0	0	0	0	0	0.00
9.9	Field Compaction Test (CTSBS)	IS: 2720 (P-28)	2 Test's 500 Sqm.	0	0	0	0	0	0	0	0	0	0	0	0	0	0.00
(IX). Cement Treated Base (CTB)		MoRT&H Clause - 403 & IRC-37: 2018															
10.1	Gradation	MoRT&H Table 400-4	1 Test 400 Cum.	0	0	0	0	0	0	0	0	0	0	0	0	0	0.00
10.2	Proctor test (MDD & OMC)	IS: 2720 (P-8)	As Required	0	0	0	0	0	0	0	0	0	0	0	0	0	0.00
10.3	Unconfined Compressive Strength (UCS)	IS: 516	3 Specimens each 400 ton/ Minimum 2 tests per day	0	0	0	0	0	0	0	0	0	0	0	0	0	0.00
10.4	Cement Content	IS: 516	3 Specimens each 400 ton/ Minimum 2 Tests per day	0	0	0	0	0	0	0	0	0	0	0	0	0	0.00
10.5	Flexural Strength	IS: 516	3 Specimens each 400 ton/ Minimum 2 Tests per day	0	0	0	0	0	0	0	0	0	0	0	0	0	0.00
10.6	Soundness Test	BIS: 4332 (P-4)	As Required	0	0	0	0	0	0	0	0	0	0	0	0	0	0.00
10.7	Field Compaction Test (CTSBS)	IS: 2720 (P-28)	2 Test's 500 Sqm.	0	0	0	0	0	0	0	0	0	0	0	0	0	0.00
(X). Wet Mix Macadam (WMM)		MoRT&H-406															
11.1	Gradation	Table 400-13	1 Test /200 Cum.	0	0	0	0	0	0	0	0	0	0	0	0	0	0.00
11.2	Atterberg limits (LL & PI)	IS: 2720 (P-5)	1 Test /200 Cum.	0	0	0	0	0	0	0	0	0	0	0	0	0	0.00
11.3	Proctor test (MDD Vs OMC)	IS: 2720 (P-8)	As Required	0	0	0	0	0	0	0	0	0	0	0	0	0	0.00
11.4	Aggregate Impact Value (A.I.V)	IS: 2386 (P-4)	1 Test / 1000 Cum	0	0	0	0	0	0	0	0	0	0	0	0	0	0.00
11.5	Combined Flakiness & Elongation (FI & FI)	IS: 2386 (P-1)	1 Test /500 Cum	0	0	0	0	0	0	0	0	0	0	0	0	0	0.00
11.6	Water Absorption	IS: 2386 (P-3)	As Required	0	0	0	0	0	0	0	0	0	0	0	0	0	0.00
11.7	Soundness	IS: 2386 (P-3)	As Required	0	0	0	0	0	0	0	0	0	0	0	0	0	0.00
11.8	Field Compaction Test (WMM)	IS: 2720 (P-28)	1 Set / 1000 Sqm. (1Set = 3 Pts)	0	0	0	0	0	0	0	0	0	0	0	0	0	0.00
(XI). Aggregate Inter Layer (AIL)		MoRT&H-406															
12.1	Gradation	Table 400-13	1 Test /200 Cum.	0	0	0	0	0	0	0	0	0	0	0	0	0	0.00
12.2	Atterberg limits (LL & PI)	IS: 2720 (P-5)	1 Test /200 Cum.	0	0	0	0	0	0	0	0	0	0	0	0	0	0.00
12.3	Proctor test (MDD & OMC)	IS: 2720 (P-8)	As Required	0	0	0	0	0	0	0	0	0	0	0	0	0	0.00
12.4	Aggregate Impact Value (A.I.V)	IS: 2386 (P-4)	1 Test / 1000 Cum	0	0	0	0	0	6	0	0	6	0	0	0	0	0.00
12.5	Combined Flakiness & Elongation (FI & FI)	IS: 2386 (P-1)	1 Test /500 Cum	0	0	0	0	0	0	0	0	0	0	0	0	0	0.00
12.6	Water Absorption	IS: 2386 (P-3)	As Required	0	0	0	0	0	0	0	0	0	0	0	0	0	0.00
12.7	Soundness	IS: 2386 (P-3)	As Required	0	0	0	0	0	0	0	0	0	0	0	0	0	0.00
12.8	Field Compaction Test (AIL)	IS: 2720 (P-28)	1 Set / 1000 Sqm. (1Set = 3 Pts)	0	0	0	0	0	0	0	0	0	0	0	0	0	0.00
(XII). Dense Bituminous Macadam (DBM)		MoRT&H-500															
13.1	Binder Content & Gradation	As per MoRT&H	1 Test / 400 Tonnes	0	0	0	0	0	0	0	0	0	0	0	0	0	0.00
13.2	Mix Combined Gradation	As per MoRT&H	1 Test / 400 Tonnes	0	0	0	0	0	0	0	0	0	0	0	0	0	0.00
13.3	Marshall Test (In Sets)	ASTM-D :1559	1 Set/ 400 Tonnes	0	0	0	0	0	0	0	0	0	0	0	0	0	0.00
13.4	Aggregate Impact Value (A.I.V)	IS: 2386 (P-4)	1 Test / 350 Cum	0	0	0	0	0	0	0	0	0	0	0	0	0	0.00
13.5	Combined Flakiness & Elongation (FI & FI)	IS: 2386 (P-1)	1 Test / 350 Cum	0	0	0	0	0	0	0	0	0	0	0	0	0	0.00
13.6	Water Absorption & Specific Gravity	IS: 2386 (P-3)	1 Test/ Source & As Required	0	0	0	0	0	0	0	0	0	0	0	0	0	0.00
13.7	Stripping Value	IS: 6241	1 Test/ Source & As Required	0	0	0	0	0	0	0	0	0	0	0	0	0	0.00
13.8	Maximum Sp Gravity (Gmm)	ASTM D 2041	1 Set/ 400 MTMix	0	0	0	0	0	0	0	0	0	0	0	0	0	0.00
13.9	Density of compacted layer	MoRT&H Sec 900	1 Test / 700 Sq.m	0	0	0	0	0	0	0	0	0	0	0	0	0	0.00
13.10	Soundness	IS: 2386 (P-3)	1 Test/ Source & As Required	0	0	0	0	0	0	0	0	0	0	0	0	0	0.00
13.11	Sand equivalent test	IS: 2720 (P-37)	1 Test/ Source & As Required	0	0	0	0	0	0	0	0	0	0	0	0	0	0.00
13.12	plasticity Index	MoRT&H Sec 900	1 Test/ Source & As Required	0	0	0	0	0	0	0	0	0	0	0	0	0	0.00
13.13	percentage of Fractured face	MoRT&H Sec 900	1 Test/ Source & As Required	0	0	0	0	0	0	0	0	0	0	0	0	0	0.00
13.14	Polished Stone Value	BS: 812 (P-114)	1 Test/ Source & As Required	0	0	0	0	0	0	0	0	0	0	0	0	0	0.00

4-L of NH 37 from design Ch 0+020 on NH-8 near Karimganj to design Chainage 14+380 near Sutarkandi (Spur Connectivity to Indo/Bangladesh Border) Silchar-Churaibari Pkg-7 in the State of Assam on HAM mode.

(XIII). Bituminous Concrete (BC)			MoRTH-500													
14.1	Binder Content & Gradation	As per MoRTH&H	1 Test / 400 Tonnes	0	0	0	0	0	0	0	0	0	0	0	0	0.00
14.2	Mix Combined Gradation	As per MoRTH&H	1 Test / 400 Tonnes	0	0	0	0	0	0	0	0	0	0	0	0	0.00
14.3	Marshall Test (In Sets)	ASTM-D-1559	1 Tet/ 400 Tonnes	0	0	0	0	0	0	0	0	0	0	0	0	0.00
14.4	Aggregate Impact Value (A.I.V)	IS:2386 (P-4)	1 Test / 350 Cum	0	0	0	0	0	0	0	0	0	0	0	0	0.00
14.5	Combined Flakiness & Elongation (Fl & El)	IS: 2386 (P-1)	1 Test / 350 Cum	0	0	0	0	0	0	0	0	0	0	0	0	0.00
14.6	Water Absorption & Specific Gravity	IS: 2386 (P-3)	1 Test/ Source & As Required	0	0	0	0	0	0	0	0	0	0	0	0	0.00
14.7	Stripping Value	IS: 6241	1 Test/ Source & As Required	0	0	0	0	0	0	0	0	0	0	0	0	0.00
14.8	Maximum Sp.Gravity(Gmm)	ASTM D 2041	1 set/ 400 MTMix	0	0	0	0	0	0	0	0	0	0	0	0	0.00
14.9	Density of Compacted Layer	MoRTH&H Sec.900	1 test / 700 Sq.m	0	0	0	0	0	0	0	0	0	0	0	0	0.00
14.10	Soundness	IS: 2386 (P-3)	1 Test/ Source & As Required	0	0	0	0	0	0	0	0	0	0	0	0	0.00
14.11	Sand equivalent test	IS: 2720 (P-37)	1 Test/ Source & As Required	0	0	0	0	0	0	0	0	0	0	0	0	0.00
14.12	plasticity Index	MoRTH&H Sec.900	1 Test/ Source & As Required	0	0	0	0	0	0	0	0	0	0	0	0	0.00
14.13	percentage of Fractured face	MoRTH&H Sec.900	1 Test/ Source & As Required	0	0	0	0	0	0	0	0	0	0	0	0	0.00
14.14	Polished Stone Value	BS: 812 (P-114)	1 Test/ Source & As Required	0	0	0	0	0	0	0	0	0	0	0	0	0.00
(XIV). Bitumen (VG-40)																
15.1	Softening Point(°c)	IS : 1205	1 Test Per Lot	0	0	0	0	0	0	0	0	0	0	0	0	0.00
15.2	Penetration at 25°C 100gm 5 Sec	IS:1203	1 Test Per Lot	0	0	0	0	0	0	0	0	0	0	0	0	0.00
15.3	Ductility at 25°C	IS: 1208	As Required	0	0	0	0	0	0	0	0	0	0	0	0	0.00
15.4	Absolute Viscosity at 60°/135°C (CST)	IS:1206 (P-2)	1 Test Per Lot	0	0	0	0	0	0	0	0	0	0	0	0	0.00
15.5	Kinematic Viscosity at 135°C (CST)	IS: 1206 (P-3)	As Required	0	0	0	0	0	0	0	0	0	0	0	0	0
15.6	Specific Gravity at 27°C	IS: 2380 (P-4)	As Required	0	0	0	0	0	0	0	0	0	0	0	0	0.00
15.7	Flash Pint	IS: 1209 (IS: 1448 P-69)	As Required	0	0	0	0	0	0	0	0	0	0	0	0	0
15.8	Solubility Test	IS: 1216	As Required	0	0	0	0	0	0	0	0	0	0	0	0	0
(XV). MODIFIED BITUMEN (PMB 76E-10)																
16.1	Specific Gravity at 27°C	IS: 2380 (P-4)	As Required	0	0	0	0	0	0	0	0	0	0	0	0	0.00
16.2	Softening Point (°C)	IS: 1205	1 Test Per Lot	0	0	0	0	0	0	0	0	0	0	0	0	0.00
16.3	Seperation, Difference in Softening Point (0°C)	IS: 15462- 2019	1 Test Per Lot	0	0	0	0	0	0	0	0	0	0	0	0	0.00
16.4	Elastic Recovery at 15°C	IS: 15462- 2019	1 Test Per Lot	0	0	0	0	0	0	0	0	0	0	0	0	0.00
(XVI). Emulsion (SS-1)																
17.1	Viscosity @ 25°C	IS: 8887:2004	1 Test Per Lot	0	0	0	0	0	0	0	0	0	0	0	0	0
17.2	Water Content	IS: 8887:2004	As Required	0	0	0	0	0	0	0	0	0	0	0	0	0
17.3	Prime coat	IS: 8887:2004	3 test / Day	0	0	0	0	0	0	0	0	0	0	0	0	0.00
(XVII). Emulsion (RS-1)																
18.1	Viscosity @ 50°C	IS: 8887:2004	1 Test Per Lot	0	0	0	0	0	0	0	0	0	0	0	0	0
18.2	Water Content	IS: 8887:2004	As Required	0	0	0	0	0	0	0	0	0	0	0	0	0
18.3	Tack Coat	IS: 8887:2004	3 test / Day	0	0	0	0	0	0	0	0	0	0	0	0	0.00
(XVIII). Lean Concrete (DLC)			MIX DESIGN	MoRTH&H-600												
13.1	Gradation	Table 600-1	1 test / day	15	15	0	2	2	0	17	17	0	1	1	0	50.00
13.2	Field Compaction Test	IS: 2720 (P-28)	1 Set(3 pit) of tests / 2000 sqm.	12	12	0	6	6	0	18	18	0	2	2	0	33.33
13.3	Proctor test (MDD & OMC)	IS: 2720 (P-8)	As required	2	2	0	0	0	0	2	2	0	0	0	0	#DIV/0!
13.4	Aggregate Impact Value (A.I.V)	IS: 2386 (P-4)	As required	2	2	0	0	0	0	2	2	0	0	0	0	#DIV/0!
13.5	Flakiness & Elongation (Fl & El)	IS: 2386 (P-1)	As required	2	2	0	0	0	0	2	2	0	0	0	0	#DIV/0!
13.6	Water Absorption	IS: 2386 (P-3)	As required	1	1	0	0	0	0	1	1	0	0	0	0	#DIV/0!
13.7	Moisture correction	IS: 2386 (P-3)	1 test / Day	2	2	0	0	0	0	2	2	0	0	0	0	#DIV/0!
13.8	Compressive Strength (07 day's)	IS: 516	07 days/ Each Day 5 Cube's	11	11	0	4	4	0	15	15	0	1	1	0	25.00
(XIX). Pavement Quality Concrete (PQC)			MIX DESIGN	MoRTH&H-600												
14.1	Gradation	Table 600-1	1 Test / Day	20	20	0	0	0	0	20	20	0	0	0	0	#DIV/0!
14.2	Aggregate Impact Value (A.I.V)	IS: 2386 (P-4)	As Required	2	2	0	0	0	0	2	2	0	0	0	0	#DIV/0!
14.3	Flakiness 7 Elongation (Fl & El)	IS: 2386 (P-1)	As Required	1	1	0	0	0	0	1	1	0	0	0	0	#DIV/0!
14.4	Water Absorption	IS: 2386 (P-3)	As Required	1	1	0	0	0	0	1	1	0	0	0	0	#DIV/0!
14.5	Slump Test	IS: 1199	1 Test Each Dumper	0	0	0	0	0	0	0	0	0	0	0	0	0.00
14.6	Compressive Strength (07 day's)	IS: 516	Compressive Strength (07 day's)	6	6	0	0	0	0	6	6	0	0	0	0	#DIV/0!
14.7	Compressive Strength (28 day's)	IS: 516		6	6	0	0	0	0	6	6	0	0	0	0	#DIV/0!
14.8	Flexural Strength (07 day's)	IS: 516	As per Frequency 02 Beam's /150 Cum (Min. 6 Beam's)	6	6	0	0	0	0	6	6	0	0	0	0	#DIV/0!
14.9	Flexural Strength (28 day's)	IS: 516		6	6	0	0	0	0	6	6	0	0	0	0	#DIV/0!

4-L of NH 37 from design Ch 0+020 on NH-8 near Karimganj to design Chainage 14+380 near Sutarkandi (Spur Connectivity to Indo/Bangladesh Border) Silchar-Churaibari Pkg-7 in the State of Assam on HAM mode.

THIRD PARTY TESTS (NABL ACCREDITED LABORATORY)															
(XX). Course Aggregates															
18.1	Gradation	IS: 2386 (P-1)	1 Test / Source	2	2	0	0	0	0	2	2	0	0	0	0.00
18.2	Fl & El	IS: 2386 (P-1)	1 Test / Source	2	2	0	0	0	0	2	2	0	0	0	0.00
18.3	Aggregate Impact Value	IS: 2386 (P-4)	1 Test / Source	2	2	0	0	0	0	2	2	0	0	0	0.00
18.4	Specific Gravity	IS: 2386 (P-3)	1 Test / Source	2	2	0	0	0	0	2	2	0	0	0	0.00
18.5	Water Absorption	IS: 2386 (P-3)	1 Test / Source	2	2	0	0	0	0	2	2	0	0	0	0.00
18.6	Deleterious Content	IS: 2386 (P-1)	1 Test / Source	2	2	0	0	0	0	2	2	0	0	0	0.00
18.7	L.A.V.	IS: 2386 (P-4)	1 Test / Source	2	2	0	0	0	0	2	2	0	0	0	0.00
18.8	Alkali Aggregate Reactivity	IS: 2386 (P-7)	1 Test / Source	2	2	0	0	0	0	2	2	0	0	0	0.00
18.9	Soundness	IS: 2386 (P-5)	1 Test / Source	2	2	0	0	0	0	2	2	0	0	0	0.00
18.10	Petrographic Examination	IS: 2386 (P-8)	1 Test / Source	2	2	0	0	0	0	2	2	0	0	0	0.00
18.11	Stone Polished Value	IS: 812 (P-114)	1 Test / Source	2	2	0	0	0	0	2	2	0	0	0	0.00
(XXI). Fine Aggregates															
19.1	Gradation	IS: 383	1 Test / Source	2	2	0	0	0	0	2	2	0	0	0	0.00
19.2	Specific Gravity	IS: 2386 (P-3)	1 Test / Source	2	2	0	0	0	0	2	2	0	0	0	0.00
19.3	Water Absorption	IS: 2386 (P-3)	1 Test / Source	2	2	0	0	0	0	2	2	0	0	0	0.00
19.4	Deleterious Content	IS: 2386 (P-1)	1 Test / Source	2	2	0	0	0	0	2	2	0	0	0	0.00
19.5	Silt Content	IS: 2386 (P-4)	1 Test / Source	2	2	0	0	0	0	2	2	0	0	0	0.00
19.6	Alkali Aggregate Reactivity	IS: 2386 (P-7)	1 Test / Source	2	2	0	0	0	0	2	2	0	0	0	0.00
19.7	Soundness	IS: 2386 (P-5)	1 Test / Source	2	2	0	0	0	0	2	2	0	0	0	0.00
19.8	Organic Impurities	IS: 2386 (P-8)	1 Test / Source	2	2	0	0	0	0	2	2	0	0	0	0.00
19.9	Fineness Modulus	IS: 383	1 Test / Source	2	2	0	0	0	0	2	2	0	0	0	0.00
(XXII). TMT Bar's (Steel)															
20.1	Physical properties	IS: 1786	< 10mm - 1 sample/25 MT, 10-16mm-1sample/35 MT,	6	6	0	0	0	0	6	6	0	0	0	0.00
20.2	Chemical properties	IS: 1786	> 16mm - 1 sample/45 MT	6	6	0	0	0	0	6	6	0	0	0	0.00
20.3	Factory Visit	IS: 1786	Elegant Steel Jointly	1	1	0	0	0	0	1	1	0	0	0	#DIV/0!
(XXIII). Construction Water															
21.1	Suitability for construction	IS: 456	1 Test Per Source / As Required	1	1	0	0	0	0	1	1	0	0	0	0.00
(XXIV). Chemical Admixture															
22.1	Physical & Chemical properties	IS: 9103	1 Test/ Per Lot	2	2	0	0	0	0	2	2	0	0	0	0.00
(XXV). Cement (OPC-53 Grade)															
23.1	Physical & Chemical properties	IS: 8112	1 Test / Source	3	3	0	0	0	0	3	3	0	0	0	0.00
(XXVI). Soil - Borrow Area															
24.1	Mechanical	IS: 2720 (P-39)	1 Test / Source	0	0	0	0	0	0	0	0	0	0	0	0.00
(XXVII). NP-4 Hume Pipe Test															
25.1	600 MM	IS: 458	1 test per Lot / of 50 Pipes	0	0	0	0	0	0	0	0	0	0	0	0.00
(XXVIII). Bitumen (Emulsion)															
26.1	Bitumen Emulsion SS-1	IS: 8887	1 Test/ Per Lot	0	0	0	0	0	0	0	0	0	0	0	0.00
26.2	Bitumen Emulsion RS-1	IS: 8887	1 Test/ Per Lot	0	0	0	0	0	0	0	0	0	0	0	0.00
(XXIX). Bitumen (VG-40)															
27.1	Bitumen VG-40	IS: 73	1 Test/ Per Lot	0	0	0	0	0	0	0	0	0	0	0	0.00
(XXX). Bitumen (PMB)															
28.1	Bitumen PMB	IS: 15462-2019	1 Test/ Per Lot	0	0	0	0	0	0	0	0	0	0	0	0.00
(XXXI). Curing Compound															
29.1	Physical & Chemical properties	ASTM C309	1 Test/ Per Lot	0	0	0	0	0	0	0	0	0	0	0	0.00

4-L of NH 37 from design Ch 0+020 on NH-8 near Karimganj to design Chainage 14+380 near Sutarkandi (Spur Connectivity to Indo/Bangladesh Border) Silchar-Churaibari Pkg-7 in the State of Assam on HAM mode.

10.3.6 Lab Equipment List

LAB EQUIPMENT FOR ASSAM PKG-07			
SINO.	Description of Goods		Quantity
1	COA RSE SIEVES	45 C M DIA-G.I-75.0 M M	2.0 No s
2	COA RSE SIEVES	45 C M DIA-G.I-63.0 M M	2.0 No s
3	COA RSE SIEVES	45 C M DIA-G.I-53.0 M M	2.0 No s
4	COA RSE SIEVES	45 C M DIA-G.I-50.0 M M	2.0 No s
5	COA RSE SIEVES	45 C M DIA-G.I-45.0 M M	2.0 No s
6	COA RSE SIEVES	45 C M DIA-G.I-40.0 M M	2.0 No s
7	COA RSE SIEVES	45 C M DIA-G.I-37.5 M M	2.0 No s
8	COA RSE SIEVES	45 C M DIA-G.I-31.5 M M	2.0 No s
9	COA RSE SIEVES	45 C M DIA-G.I-25.0 M M	2.0 No s
10	COA RSE SIEVES	45 C M DIA-G.I-26.5 M M	2.0 No s
11	COA RSE SIEVES	45 C M DIA-G.I-22.4 M M	2.0 No s
12	COA RSE SIEVES	45 C M DIA-G.I-20.0 M M	2.0 No s
13	COA RSE SIEVES	45 C M DIA-G.I-19.0 M M	2.0 No s
14	COA RSE SIEVES	45 C M DIA-G.I-16.0 M M	2.0 No s
15	COA RSE SIEVES	45 C M DIA-G.I-14.0 M M	2.0 No s
16	COA RSE SIEVES	45 C M DIA-G.I-13.20 M M	2.0 No s
17	COA RSE SIEVES	45 C M DIA-G.I-12.50 M M	2.0 No s
18	COA RSE SIEVES	45 C M DIA-G.I-11.20 M M	2.0 No s
19	COA RSE SIEVES	45 C M DIA-G.I-10.00 M M	2.0 No s
20	COA RSE SIEVES	45 C M DIA-G.I-9.5 M M	2.0 No s
21	COA RSE SIEVES	45 C M DIA-G.I-6.7 M M	2.0 No s
22	COA RSE SIEVES	45 C M DIA-G.I-6.3 M M	2.0 No s
23	COA RSE SIEVES	45 C M DIA-G.I-5.6 M M	2.0 No s
24	COA RSE SIEVES	45 C M DIA-G.I-4.75 M M	2.0 No s
25	COA RSE SIEVES	45 C M DIA-G.I-2.8 M M	2.0 No s
26	COA RSE SIEVES	45 C M DIA-G.I-2.36 M M	2.0 No s
27	COA RSE SIEVES	45 C M DIA-G.I-1.18 M M	2.0 No s
28	Lid & Pan	45 C M DIA-G.I F r a m e -450 M M	2.0 No s
29	FINE SIEVES	20 C M DIA-B R A S S -10 M M	2.0 No s
30	FINE SIEVES	20 C M DIA-B R A S S -6.3 M M	1.0 No s
31	FINE SIEVES	20 C M DIA-B R A S S -5.6 M M	2.0 No s
32	FINE SIEVES	20 C M DIA-B R A S S -5.0 M M	1.0 No s
33	FINE SIEVES	20 C M DIA-B R A S S -4.75 M M	2.0 No s
34	FINE SIEVES	20 C M DIA-B R A S S -3.35 M M	1.0 No s
35	FINE SIEVES	20 C M DIA-B R A S S -2.80 M M	2.0 No s
36	FINE SIEVES	20 C M DIA-B R A S S -2.36 M M	4.0 No s
37	FINE SIEVES	20 C M DIA-B R A S S -2.0 M M	2.0 No s
38	FINE SIEVES	20 C M DIA-B R A S S -1.4 M M	2.0 No s
39	FINE SIEVES	20 C M DIA-B R A S S -1.7 M M	2.0 No s
40	FINE SIEVES	20 C M DIA-B R A S S -1.18 M M	2.0 No s
41	FINE SIEVES	20 C M DIA-B R A S S -1.0 0 M M	2.0 No s
42	FINE SIEVES	20 C M DIA-B R A S S -0.850 M M	2.0 No s
43	FINE SIEVES	20 C M DIA-B R A S S -0 .7 10 M M	2.0 No s
44	FINE SIEVES	20 C M DIA-B R A S S -0.600 M M	4.0 No s
45	FINE SIEVES	20 C M DIA-B R A S S -0.500 M M	2.0 No s
46	FINE SIEVES	20 C M DIA-B R A S S -0.425 M M	2.0 No s
47	FINE SIEVES	20 C M DIA-B R A S S -0.355 M M	1.0 No s
48	FINE SIEVES	20 C M DIA-B R A S S -0.300 M M	4.0 No s
49	FINE SIEVES	20 C M DIA-B R A S S -0 .2 12 M M	2.0 No s
50	FINE SIEVES	20 C M DIA-B R A S S -0 .180 M M	2.0 No s
51	FINE SIEVES	20 C M DIA-B R A S S -0.150 M M	4.0 No s
52	FINE SIEVES	20 C M DIA-B R A S S -0.125 M M	2.0 No s
53	FINE SIEVES	20 C M DIA-B R A S S -0.090 M M	2.0 No s
54	FINE SIEVES	20 C M DIA-B R A S S -0.075 M M	5.0 No s
55	FINE SIEVES	20 C M DIA-B R A S S -0.045 M M	2.0 No s
56	Lid & Pan	20 C M DIA-B R A S S F r a m e -200 M	2.0 No s
57	Ele. Weight. Balance	50 Kg	3.0 No s
58	Ele. Weight. Balance	30 Kg	3.0 No s
59	Ele. Weight. Balance	15 Kg	2.0 No s
60	Ele. Weight. Balance	10 Kg	2.0 No s
61	Precision Ele. Balance	0.6 Kg	2.0 No s
62	Hot Oven Air	90*60*60 c m	1.0 No s
63	Length gauge		2.0 No s
64	flackiness Gauge		2.0 No s
65	A IV Machine		1.0 No s
66	Picno meter Bottle		2.0 No s
67	Vibrating Machine with Digital Timer & Mould		1.0 No s
68	Vicat Appratus Needle		1.0 No s
69	Glass Plate	450*450*8 mm	1.0 No s

4-L of NH 37 from design Ch 0+020 on NH-8 near Karimganj to design Chainage 14+380 near Sutarkandi (Spur Connectivity to Indo/Bangladesh Border) Silchar-Churaibari Pkg-7 in the State of Assam on HAM mode.

70	Cube Mould	15 cm	80.0 No s
71	Cube Mould	7.06 cm	18.0 No s
72	Cube Mould	10 cm	18.0 No s
73	Slump Test with Tamping Rod		6.0 No s
74	Water Bath For Soundness		1.0 No s
75	Le-Chatlier Mould	set of 6	1.0 No s
76	Gauging Trowel	150 mm	4.0 No s
77	Concrete Mixer		1.0 No s
78	Vibrating Table	100*100 cm	1.0 No s
79	MDD Mould	Standard 100 mm	4.0 No s
80	MDD Mould	Modified 150 mm	2.0 No s
81	CBR Rammer	2.6kg	1.0 No s
82	CBR Rammer	4.89kg	4.0 No s
83	LL Device Hand Operated		1.0 No s
84	Cone Penetrometer		1.0 No s
85	Evaporation Basin	150 mm	2.0 No s
86	CBR Load Frame		1.0 No s
87	CBR Mould Mild with collar & Base Plate	150 mm	24.0 No s
88	Surcharge weight	Annular (2.5 kg)	24.0 No s
89	Surcharge weight	Slotted (2.5 kg)	24.0 No s
90	Perforated Plate		24.0 No s
91	Spacer Disk		2.0 No s
92	Straight Edge	300 mm	2.0 No s
93	PL apparatus		2.0 No s
94	RMM Digital wt. Balance		4.0 No s
95	Sand Pouring Cylinder	100 mm	2.0 No s
96	Tray for Sand Pouring Cylinder		2.0 No s
97	Container for Sand Pouring Cylinder		2.0 No s
98	Sand Pouring Cylinder	150 mm	1.0 No s
99	Tray for Sand Pouring Cylinder		1.0 No s
100	Container for Sand Pouring Cylinder		1.0 No s
101	Sand Pouring Cylinder	200 mm	2.0 No s
102	Tray for Sand Pouring Cylinder		2.0 No s
103	Container for Sand Pouring Cylinder		2.0 No s
104	Moisture Cane	50 mm	50.0 No s
105	Moisture Cane	75 mm	70.0 No s
106	Moisture Cane	100 mm	70.0 No s
107	Calcium carbide	500 gm.	10 Bottle
108	Proving Ring	25 KN	2.0 No s
109	Proving Ring	50 KN	2.0 No s
110	Dial Gauge	0.01*25mm	4.0 No s
111	Measuring Tape	5 Metre	2.0 No s
112	Measuring Tape	30 Metre	2.0 No s
113	Stop watch		2.0 No s
114	Standard Sand (Grade-1)	25 Kg	5 Bags
115	Standard Sand (Grade-2)	25 Kg	5 Bags
116	Standard Sand (Grade-3)	25 Kg	5 Bags
117	Enamel Tray	600*450*50	6.0 No s
118	Enamel Tray	250mm	20.0 No s
119	GI Tray	1000*1000*100	2.0 No s
120	Enamel Tray	300*250*40	6.0 No s
121	Filter Paper for CBR	150 mm	10 Packet
122	Rubber Mallet		4.0 No s
123	Nylon Hammer		2.0 No s
124	Filter Paper for Marshall Test	100 mm	10 Packet
125	Measuring Cylinder Borosill	100 ml	20.0 No s
126	Measuring Cylinder Plastic	250 ml	2.0 No s
127	Measuring Cylinder Glass	250 ml	2.0 No s
128	Measuring Cylinder Plastic	500 ml	2.0 No s
129	Measuring Cylinder Plastic	1000 ml	2.0 No s
130	Vernier Caliver	300 mm	1.0 No s
131	Digital Thermo meter	Pen Type	2.0 No s
132	Rain Gauge		1.0 No s
133	Gas Stove Single Burner		2.0 No s
134	Hammer with Handle	500 gm.	4.0 No s
135	Chisel	25*300 mm	4.0 No s
136	Density Spoon		4.0 No s
137	Finishing Trowel		10.0 No s
138	Mashinory Trowel		10.0 No s
139	Spade		2.0 No s
140	Shovel		2.0 No s
141	Round Hot Plate		1.0 No s
142	Wash Bottle Plastic	500 ml	1.0 No s
143	Wash Bottle Plastic	1000 ml	1.0 No s

4-L of NH 37 from design Ch 0+020 on NH-8 near Karimganj to design Chainage 14+380 near Sutarkandi (Spur Connectivity to Indo/Bangladesh Border) Silchar-Churaibari Pkg-7 in the State of Assam on HAM mode.

144	Ghamela GI		2.0 No s
145	Hydrometer	SG=1.0-1.5	2.0 No s
146	Density Hydrometer	SG=0.80-0.85	2.0 No s
147	Hand Gloves		5.0 No s
148	Hand Gloves Rubber		5.0 No s
149	Scoop		4.0 No s
150	Measuring Scoop	1000 ml	2.0 No s
151	Spatula		4.0 No s
152	Pneumatic Scooter Wheel	4.18 Cft	1.0 No s
153	Beam Mould	10*10*50 cm	9.0 No s
154	Cylindrical Mould	150*300 mm	3.0 No s
155	Marsh Cone Funnel		2.0 No s
156	PH Meter		2.0 No s
157	TDS Meter		2.0 No s
158	Hot Air Oven Digital	24*24 Inch	1.0 No s
159	Hot Air Oven Thermostat	18*18 Inch	1.0 No s
160	Buoyancy Balance Apparatus		1.0 No s
161	Specific Gravity Apparatus		1.0Nos
162	Rebound Hammer		1.0Nos
163	DLC Hammer		1.0Nos
164	Marshall Compaction Pedestal	100 mm	1.0Nos
165	Borosil - Glass Measuring Beaker	100 ml	3 Nos
166	Temping Rod Slump Cone		4 Nos
167	Test Sieve Brass	200 mm Dia 2.36 mm	2 Nos
168	Test Sieve Brass	200 mm Dia 4.75 mm	2 Nos
169	Test Sieve Brass	200 mm Dia 600 Micron	2 Nos
170	Test Sieve Brass	200 mm Dia 300 Micron	2 Nos
171	Test Sieve Brass	200 mm Dia 150 Micron	2 Nos
172	Test Sieve Brass	200 mm Dia 75 Micron	4 Nos
173	Test Sieve GI	450mm Dia 4.75mm	2 Nos
174	Test Sieve GI	450 mm Dia 2.36mm	2 Nos
175	U-TUBE Viscometer	12 No	1.0Nos
176	U-TUBE Viscometer	13 No	4.0Nos
177	U-TUBE Viscometer	6 No	3.0Nos
178	Breaking Head	100 mm	1.0Nos
179	Marshall Mould	100 mm	20 Nos
180	Benzene	5 ltr	3 Nos
181	Thermometer Digital Wire Type	50 to 300 Degree	2 Nos
182	Filter Paper	100 mm	20 Nos
183	Filter Paper	150 mm	10 Nos
184	Enamel Tray	600 * 450 * 50 mm	6 Nos
185	Infrared Thermometer		15 Nos

4-L of NH 37 from design Ch 0+020 on NH-8 near Karimganj to design Chainage 14+380 near Sutarkandi (Spur Connectivity to Indo/Bangladesh Border) Silchar-Churaibari Pkg-7 in the State of Assam on HAM mode.

11.1 Outward Letter

Sr. No.	Letter No.	Date	Subject	To
1.	MKCIL/ASSAM/PKG-07/696	01-05-2026	“Intimation of Excessive Rainfall Event in terms of Clause 28.2 of Article 28 of the Concession Agreement	TL (TASPL)
2.	MKCIL/ASSAM/PKG-07/699	05-05-2026	Submission of Test Sample for 3rd party testing of Dowel Bar 25mm for Physical & Chemical Test	Avian Test Lab Pvt. Ltd.
3.	MKCIL/ASSAM/PKG-07/700	06-05-2026	Submission of Monthly Progress Report for the month of April-2026.”	TL (TASPL)
4.	MKCIL/ASSAM/PKG-07/701	06-05-2026	Submission of Statutory Auditor Certificate for achievement of Project Milestone-1.	GM (NHIDCL)
5.	MKCIL/ASSAM/PKG-07/703	07-05-2026	Reminder regarding Delay in Providing Encumbrance-Free Right of Way (RoW) as per Article 10 of Concession Agreement.	TL (TASPL)
6.	MKCIL/ASSAM/PKG-07/704	07-05-2026	Regarding Submission of Compliance for Observations on D&D for MNB at Ch. 00+742 (1x20.0m)	TL (TASPL)
7.	MKCIL/ASSAM/PKG-07/709	11-05-2026	Regarding Authorization of Mr. RANJAN KUMAR VERMA for receiving of Bank guarantee.	E.D(NHIDCL)
8.	MKCIL/ASSAM/PKG-07/713	16-05-2026	"Notice regarding unexpected delay in clearance of hindrances	R.O., NHIDCL

4-L of NH 37 from design Ch 0+020 on NH-8 near Karimganj to design Chainage 14+380 near Sutarkandi (Spur Connectivity to Indo/Bangladesh Border) Silchar-Churaibari Pkg-7 in the State of Assam on HAM mode.

9.	MKCIL/ASSAM/PKG-07/719	23-05-2026	"Request for Dismantling of Structure Falling within ROW after Deposit of Compensation Amount in Court	GM (NHIDCL)
10.	MKCIL/ASSAM/PKG-07/724	29-05-2026	Maintenance of the entire existing NH-37 stretch, including the existing town carriageway being bypassed, is beyond the agreed Scope of the Project under the Concession Agreement; any such maintenance, if directed, to be treated as a..	GM (NHIDCL)
11.	MKCIL/ASSAM/PKG-07/725	30-05-2026	Submission of Company Profile & Credential of M/s Maan Shakti for Source Approval of Steel Reinforcement (Dowel Bar)	TL (TASPL)

11.2 Inward Letter (NHIDCL & TASPL)

Sr. No.	Letter No.	Date	Subject	From
1	TASPL-MAV/NH-37/PMU/2026/May/200	13-05-2026	Submission of Monthly Inspection Report for the Month of April - 2026 (MIR No.12).	TASPL
2		09-05-2026	""Reg.-Routine maintenance and repairing work of existing highways during	TASPL
3	NHIDCL/PMU-Karimganj/MKC/SCPL/2025-26/764	25-05-2026	Compliance regarding Inventory and Condition Assesment of Reinforced Soil Wall in NH Projects	NHIDCL
4	NHIDCL/PMU-Karimganj/MKC/PKG-07/Maintenance/2025-26/768	27-05-2026	Regarding Urgent Repair and Maintenance of Existing Carriageway of NH-37	NHIDCL
5	NHIDCL/PMU-Karimganj/MKC/PKG-07/2025-26/771	27-05-2026	Notice for recovery of Maintenance charges	NHIDCL

4-L of NH 37 from design Ch 0+020 on NH-8 near Karimganj to design Chainage 14+380 near Sutarkandi (Spur Connectivity to Indo/Bangladesh Border) Silchar-Churaibari Pkg-7 in the State of Assam on HAM mode.

**CHAPTER-12
NON-CONFORMANCE REPORT**

Sl. No.	NCR Letter reference no.	Date	NCR No.	Subject	Closure By letter No.	Date	Remarks
1	TAPSL-MAV/NH-37/MKCIL/2025/OCT/53	05.08.2025	1	Non-Compliance with Safety Norms at Ch. 12+800 to 13+500 (LHS).”	MKCIL/ASSA M/PKG-07/336	22.08.2025	
2	TAPSL-MAV/NH-37/MKCIL/2025/OCT/91	10.10.2025	2	Non-Compliance with Safety Norms at Ch. 12+300 to 12+500 (LHS).”	MKCIL/ASSA M/PKG-7/409	14.10.2025	

4-L of NH 37 from design Ch 0+020 on NH-8 near Karimganj to design Chainage 14+380 near Sutarkandi (Spur Connectivity to Indo/Bangladesh Border) Silchar-Churaibari Pkg-7 in the State of Assam on HAM mode.

**CHAPTER-13
WEATHER REPORT**

Sl. no.	Date	Temperature (In °c)		Humidity (In %)		Rainfall (mm)	Weather Condition	Remarks
		Maximum	Minimum	Maximum	Minimum			
1	01-05-2026	23.0	22.3	84.0	81.0	70.60	Rainy	
2	02-05-2026	23.9	22.0	83.0	80.0	28.20	Rainy	
3	03-05-2026	25.0	24.2	85.0	81.0	31.40	Rainy	
4	04-05-2026	27.5	24.3	84.0	77.0	0.00	Sunny	
5	05-05-2026	28.3	26.5	80.0	75.0	0.00	Sunny	
6	06-05-2026	28.0	26.3	79.0	76.0	6.20	Cloudy/Rainy	
7	07-05-2026	23.6	26.7	78.0	69.0	0.00	Sunny	
8	08-05-2026	29.9	27.1	75.0	64.0	0.00	Sunny	
9	09-05-2026	30.6	27.7	76.0	68.0	0.00	Sunny	
10	10-05-2026	28.1	26.3	77.0	71.0	79.20	Rainy	
11	11-05-2026	28.3	25.7	76.0	69.0	5.60	Cloudy/Rainy	
12	12-05-2026	28.4	26.6	78.0	75.0	58.80	Rainy	
13	13-05-2026	28.5	25.9	80.0	72.0	0.00	Sunny	
14	14-05-2026	27.6	26.1	83.0	78.0	134.00	Rainy	
15	15-05-2026	27.4	25.4	83.0	81.0	246.20	Rainy	
16	16-05-2026	28.5	27.4	82.0	79.0	24.40	Rainy	
17	17-05-2026	28.9	27.4	80.0	73.0	5.00	Cloudy/Rainy	
18	18-05-2026	27.6	26.5	82.0	79.0	130.40	Rainy	
19	19-05-2026	29.3	28.6	82.0	80.0	0.00	Sunny	
20	20-05-2026	32.2	29.3	81.0	74.0	0.00	Sunny	
21	21-05-2026	30.5	29.7	80.0	77.0	2.00	Cloudy/Rainy	
22	22-05-2026	29.0	27.1	82.0	78.0	150.20	Rainy	
23	23-05-2026	27.1	26.1	81.0	79.0	158.00	Rainy	
24	24-05-2026	27.0	26.3	82.0	80.0	59.20	Rainy	
25	25-05-2026	25.8	25.3	84.0	86.0	103.60	Rainy	
26	26-05-2026	26.7	25.5	83.0	81.0	6.00	Cloudy/Rainy	
27	27-05-2026	25.7	24.8	89.0	84.0	15.60	Rainy	
28	28-05-2026	28.9	25.9	83.0	79.0	0.00	Sunny	
29	29-05-2026	30.3	28.1	81.0	74.0	0.00	Sunny	
30	30-05-2026	29.5	27.8	78.0	75.0	0.00	Sunny	
31	31-05-2026	30.2	29.3	80.0	77.0	0.00	Sunny	

Rainfall Data				
Sr.no.	Description	Total Rainfall	Up to previous month	This month
1	Rainfall	10532.20	9217.6	1314.6

The maximum & minimum weather records are summarized below:

TEMPERATURE/ RAINFALL PERIOD: 1 st May, 2026 to 31 th May, 2026				
Temperature		Rainfall		
Maximum (in °C)	Minimum (in °C)	Maximum (in mm)	Minimum (in mm)	Total Days
32.2	22.0	246.2	0	19

4-L of NH 37 from design Ch 0+020 on NH-8 near Karimganj to design Chainage 14+380 near Sutarkandi (Spur Connectivity to Indo/Bangladesh Border) Silchar-Churaibari Pkg-7 in the State of Assam on HAM mode.

**CHAPTER-14
ACCIDENT REPORT**

NIL

4-L of NH 37 from design Ch 0+020 on NH-8 near Karimganj to design Chainage 14+380 near Sutarkandi (Spur Connectivity to Indo/Bangladesh Border) Silchar-Churaibari Pkg-7 in the State of Assam on HAM mode.

CHAPTER-15

ROAD MAINTENANCE & SAFETY REPORT

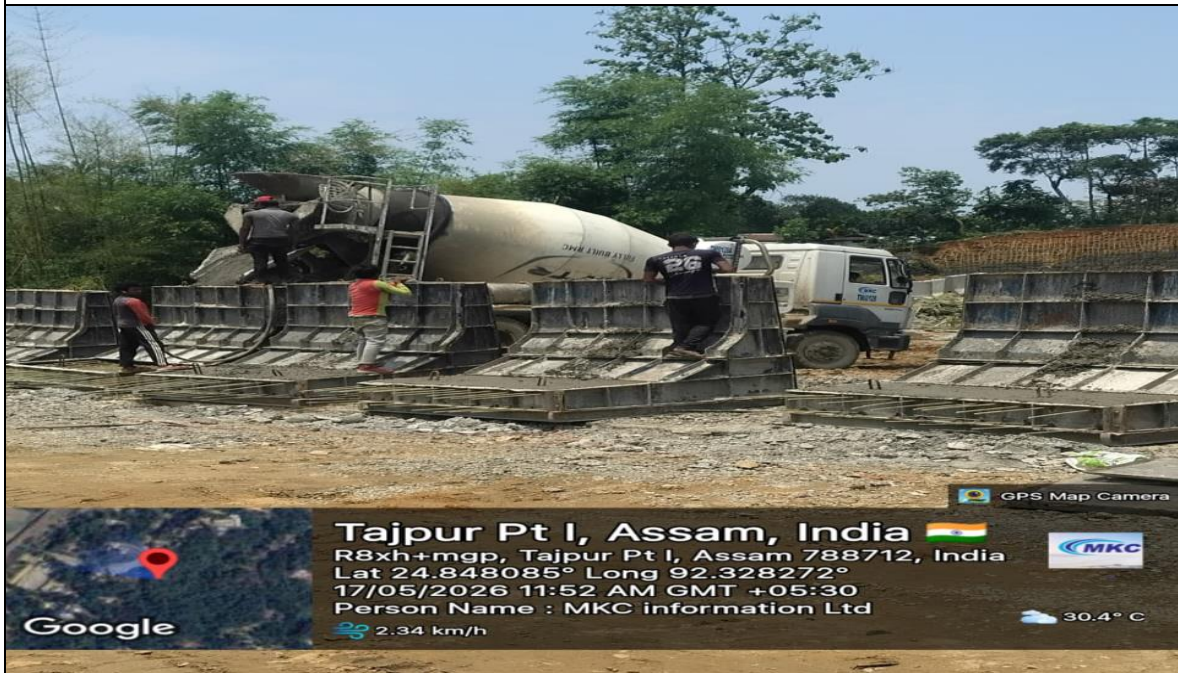
The Traffic Safety Arrangements during the execution of works is being carried out by the Concessionaire for safe movement of vehicles on the project highway. The Concessionaire has provided sufficient road signs, temporary barriers, gunny bags filled with soil with reflective stickers etc. at the construction sites.

4-L of NH 37 from design Ch 0+020 on NH-8 near Karimganj to design Chainage 14+380 near Sutarkandi (Spur Connectivity to Indo/Bangladesh Border) Silchar-Churaibari Pkg-7 in the State of Assam on HAM mode.

CHAPTER-16
PROJECT PROGRESS PHOTOGRAPHS



MJB- PSC GIRDER GROUTING(G-04) at Ch- 00+526



FSCB Concrete Work in progress

4-L of NH 37 from design Ch 0+020 on NH-8 near Karimganj to design Chainage 14+380 near Sutarkandi (Spur Connectivity to Indo/Bangladesh Border) Silchar-Churaibari Pkg-7 in the State of Assam on HAM mode.



Fakira bazaar main market road maintenance work



MJB- A2 ABUTMENT CAP Concrete Work at Ch- 02+893

4-L of NH 37 from design Ch 0+020 on NH-8 near Karimganj to design Chainage 14+380 near Sutarkandi (Spur Connectivity to Indo/Bangladesh Border) Silchar-Churaibari Pkg-7 in the State of Assam on HAM mode.



LVUP- A2 2nd Lift Concrete Work at Ch- 01+142



ROB- G-03 GIRDER Concrete Work at Ch- 04+624

4-L of NH 37 from design Ch 0+020 on NH-8 near Karimganj to design Chainage 14+380 near Sutarkandi (Spur Connectivity to Indo/Bangladesh Border) Silchar-Churaibari Pkg-7 in the State of Assam on HAM mode.



Box Culvert Erection Work at Ch- 03+418

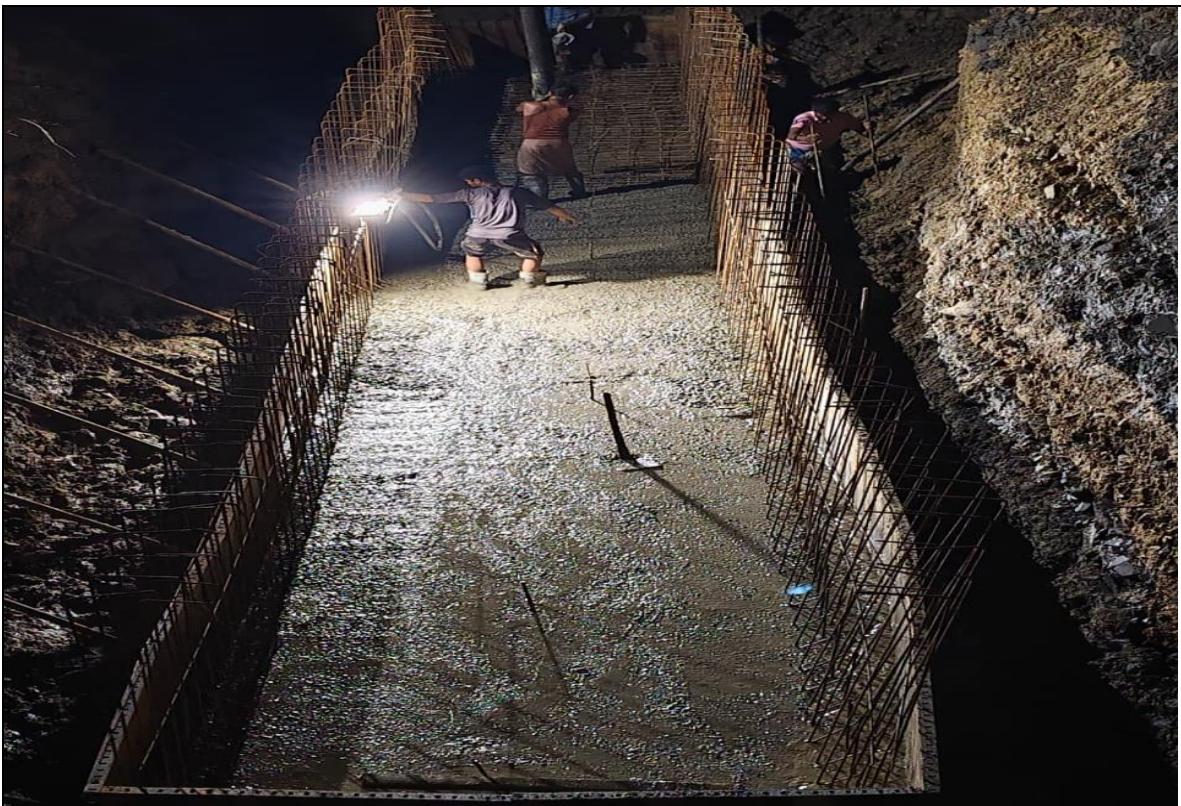


TOE WALL Final Lift Concrete Work at Ch- 01+203 to 01+227 RHS

4-L of NH 37 from design Ch 0+020 on NH-8 near Karimganj to design Chainage 14+380 near Sutarkandi (Spur Connectivity to Indo/Bangladesh Border) Silchar-Churaibari Pkg-7 in the State of Assam on HAM mode.

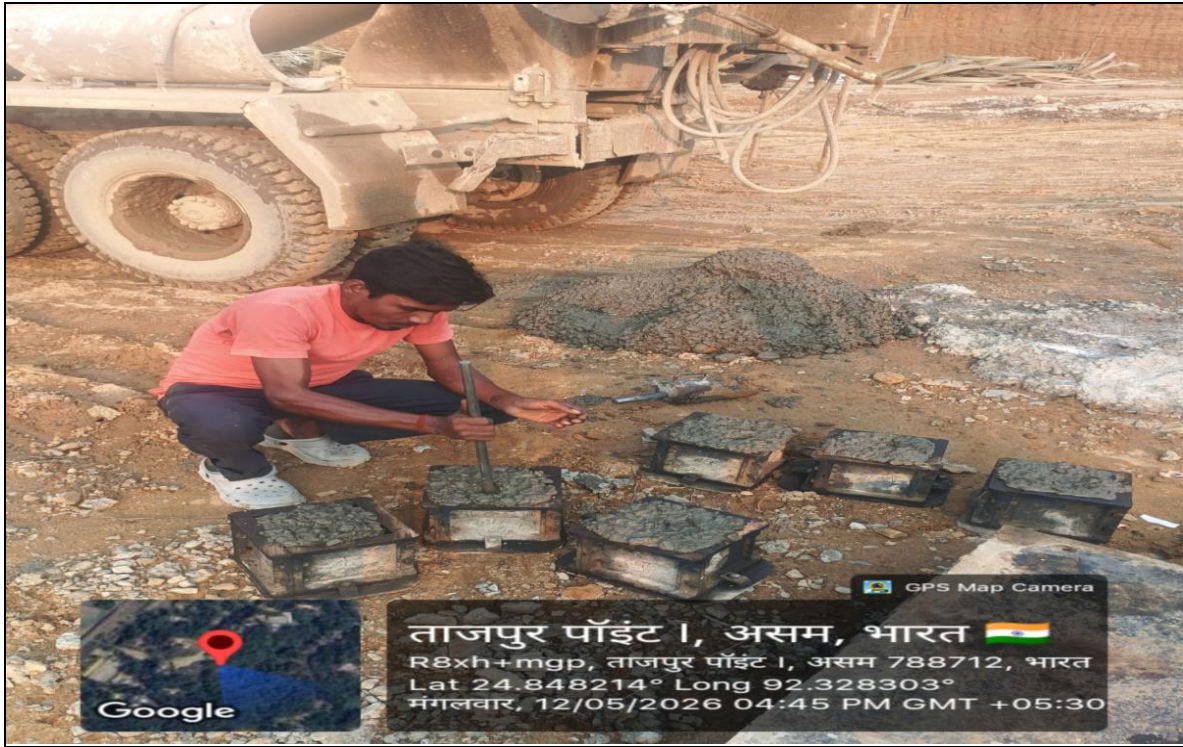


SG Top Preparation at Ch- 13+040 to 13+110 LHS



Box Culvert- Raft at Ch-1+254 (LHS) concrete work

4-L of NH 37 from design Ch 0+020 on NH-8 near Karimganj to design Chainage 14+380 near Sutarkandi (Spur Connectivity to Indo/Bangladesh Border) Silchar-Churaibari Pkg-7 in the State of Assam on HAM mode.



Cube casting of FSCB-40 RCC



Aggregate Impact Value Test

4-L of NH 37 from design Ch 0+020 on NH-8 near Karimganj to design Chainage 14+380 near Sutarkandi (Spur Connectivity to Indo/Bangladesh Border) Silchar-Churaibari Pkg-7 in the State of Assam on HAM mode.



Cube Testing



RE Block casting work

4-L of NH 37 from design Ch 0+020 on NH-8 near Karimganj to design Chainage 14+380 near Sutarkandi (Spur Connectivity to Indo/Bangladesh Border) Silchar-Churaibari Pkg-7 in the State of Assam on HAM mode.



GSB filling for pot hole at settlement



Road Maintenance near Front of Shiv Temples